

*Awakening the senses
to something new*



Welcome to

OCEAN HOUSE

ELLINGTON

An exclusive collection of oceanfront residences surrounded by an oasis of palm trees and abundant flora and fauna delivering dramatic views of the ocean's turquoise water.





A home of unique experiences curated for residents seeking a lifestyle incomparable to anywhere else

An aerial photograph of Palm Jumeirah, Dubai, at sunset. The island is crescent-shaped and surrounded by deep blue water. The sky is filled with soft, golden light and wispy clouds. In the background, the Dubai skyline is visible, including several tall skyscrapers. The foreground shows the curved edge of the island with some buildings and greenery.

A continuation of a design legacy on the Palm's Northeastern Crescent

Palm Jumeirah embodies a modern era of leisure and innovation. Yet through its relationship with the sea, it is forever linked to Dubai's maritime heritage by 17 fronds and a crescent-shaped outer beach reconnecting the city with the restorative effects of the ocean.

Far more than an island, The Palm is a true marvel of engineering symbolic of the region's yearning for individualism and modernization.



Discover a new state of flow

Ocean House is a design identity that links the fluidity of the ocean to the curves of the property's architecture. Using soft shadows and intricate textures, it communicates a seamless state of flow.



Every detail matters

In both its interior and exterior, Ocean House's, design language exudes uniqueness and embraces the unexpected. Contemporary unprecedented layers and shapes, clean travertine tones, natural woods and the masterful use of natural light reflect a design philosophy in which elegance and appreciation for sleek structures become then the ultimate expression of luxury.



Private pools and gardens bringing living spaces and lifestyles to a higher level



Above & beyond experiences

A wealth of experiences and amenities that fit seamlessly with the unique lifestyles of our residents.

From a garden oasis Olympic pool, wellness spa that features a salt cave, aromatherapy shower experience, hydrotherapy path walks, design-led show kitchen for private functions, club lounge with a cigar terrace and a cinema room.



Drop-off Area
Creating a sense of arrival



The Lobby
A grand welcome



Pool Deck

Olympic pool in an oasis garden



Health Club

Higher perspectives on fitness



Cinema Room
A movie-theatre experience



Kids' Play Area
Imaginative spaces to explore

WELLNESS SPA

Salt Cave

Steam

Infrared
Sauna

Wellness Spa

Wellness retreat at your doorstep

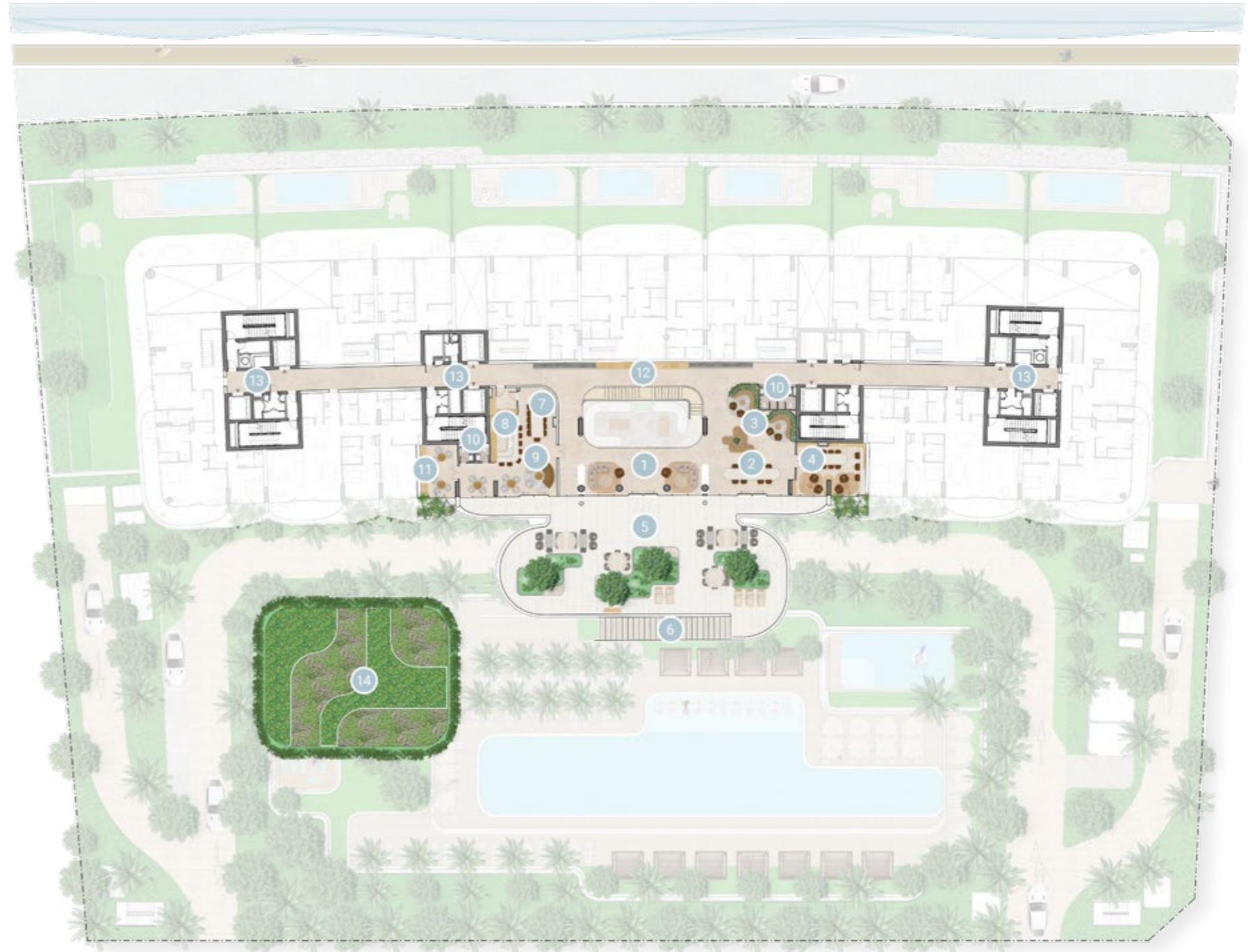
GROUND FLOOR AMENITIES PLAN

- 01 MAIN ENTRANCE
- 02 KIDS PLAY AREA
- 03 KIDS BATHROOM
- 04 MEETING ROOM
- 05 LOBBY LOUNGE
- 06 LOBBY ENTRANCE
- 07 DROP-OFF AREA
- 08 LOBBY RECEPTION
- 09 CINEMA ROOM
- 10 GAMES ROOM
- 11 ACCESS TO THE POOL TERRACE
- 12 FEATURE STAIRCASE
- 13 OLYMPIC SIZE POOL
- 14 BAJA SHELF
- 15 CABANAS
- 16 SUN LOUNGERS' AREA
- 17 KIDS POOL
- 18 FITNESS STUDIO
- 19 OUTDOOR YOGA DECK
- 20 FEMALE CHANGE ROOM
- 21 MALE CHANGE ROOM
- 22 ACCESS TO WELLNESS SPA
- 23 VISITOR PARKING
- 24 VEHICLE ENTRANCE
- 25 VEHICLE EXIT
- 26 SALT CAVE
- 27 STEAM ROOM
- 28 INFRARED SAUNA ROOM
- 29 PLUNGE POOL
- 30 AROMATHERAPY EXPERIENCE SHOWER
- 31 HYDROTHERAPY PATH WALK
- 32 ACCESS TO BASEMENT PARKING



1ST FLOOR AMENITIES PLAN

- 01 LOUNGE AREA
- 02 COMMUNAL TABLE
- 03 CO-WORKING AREA
- 04 LIBRARY ROOM
- 05 OUTDOOR TERRACE LOUNGE
- 06 ACCESS TO POOL DECK
- 07 PRIVATE DINING
- 08 SHOW KITCHEN
- 09 PRIVATE LOUNGE
- 10 WASHROOM
- 11 CIGAR ROOM
- 12 GALLERY WALL
- 13 LIFT LOBBIES
- 14 ROOFTOP GARDEN



2 BEDROOM SINGLE ASPECT



Internal Living Area	Outdoor Living Area	Total Living Area
1895.42 sq.ft	153.82 sq.ft	2049.23

1st Floor

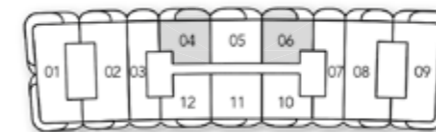


2 BEDROOM SINGLE ASPECT
TYPE A



Internal Living Area	Outdoor Living Area	Total Living Area
1519.22 sq.ft	266.62 sq.ft	1785.84 sq.ft

2nd Floor - 7th Floor

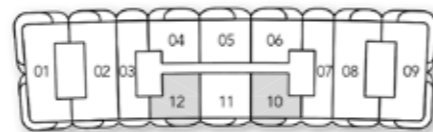


2 BEDROOM SINGLE ASPECT
TYPE B



Internal Living Area	Outdoor Living Area	Total Living Area
1470.78 sq.ft	171.47 sq.ft	1642.25 sq.ft

2nd Floor - 7th Floor

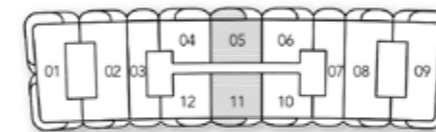


2 BEDROOM SINGLE ASPECT
TYPE C

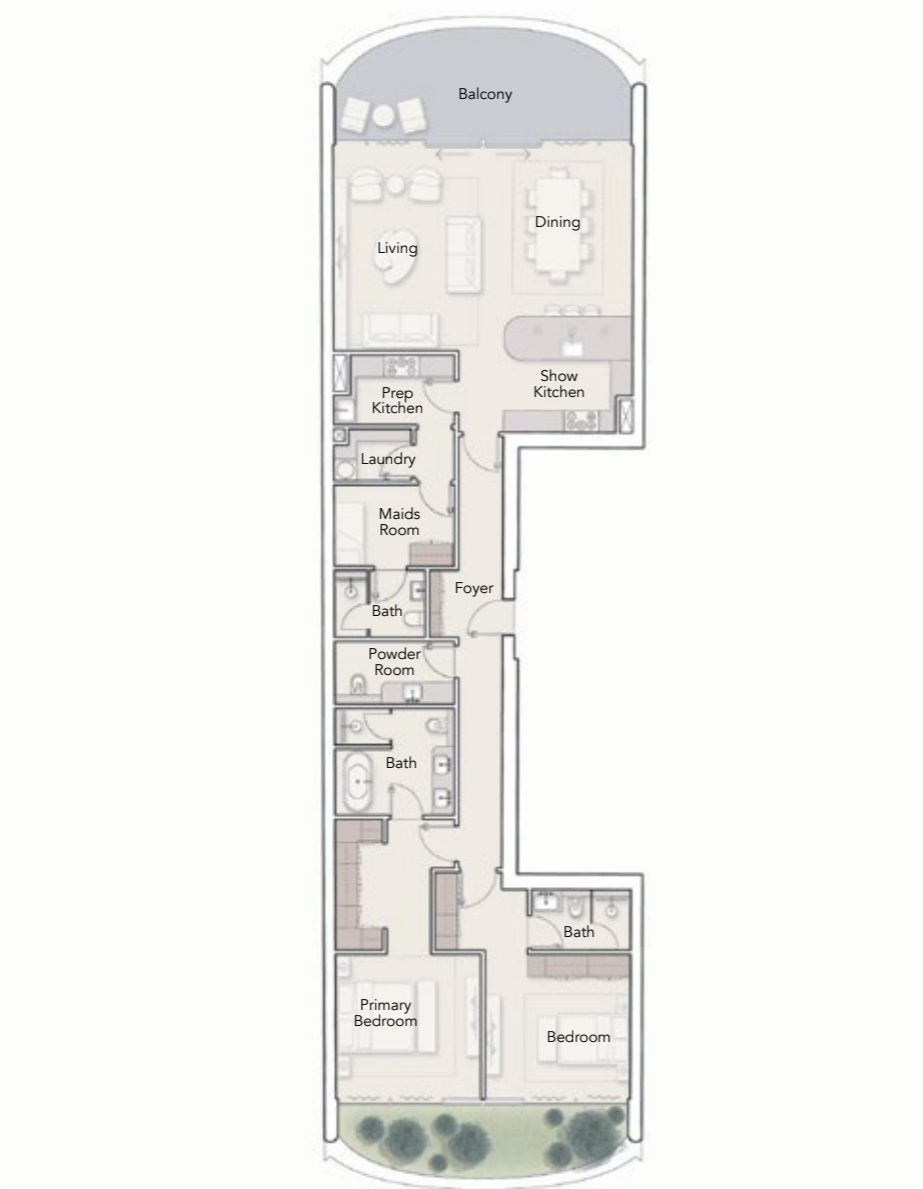


Internal Living Area	Outdoor Living Area	Total Living Area
1665.28 sq.ft	261.67 sq.ft	1926.95 sq.ft

2nd Floor - 7th Floor

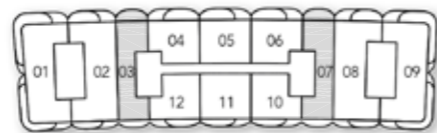


2 BEDROOM DUAL ASPECT

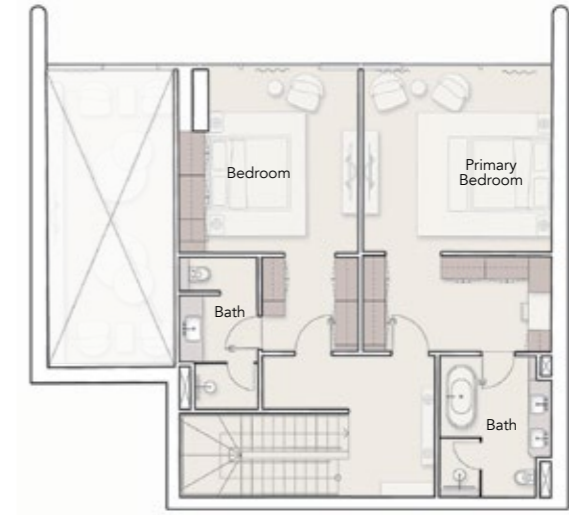
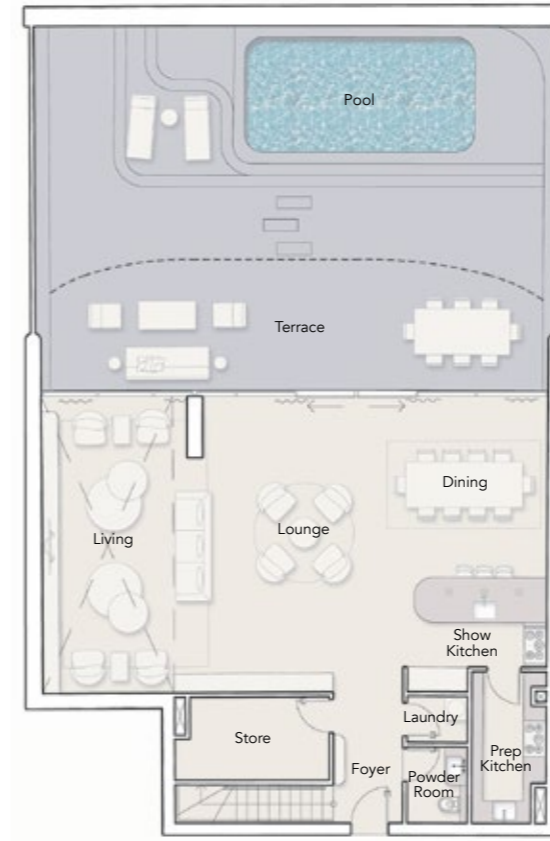


Internal Living Area	Outdoor Living Area	Total Living Area
1879.27 sq.ft	238.96 sq.ft	2118.23 sq.ft

2nd Floor - 7th Floor

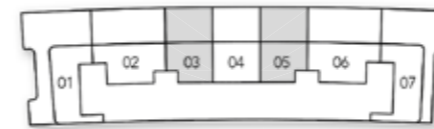


2 BEDROOM DUPLEX



Internal Living Area	Outdoor Living Area	Total Living Area
2770.41 sq.ft	1443.44 sq.ft	4213.85 sq.ft

Ground Floor



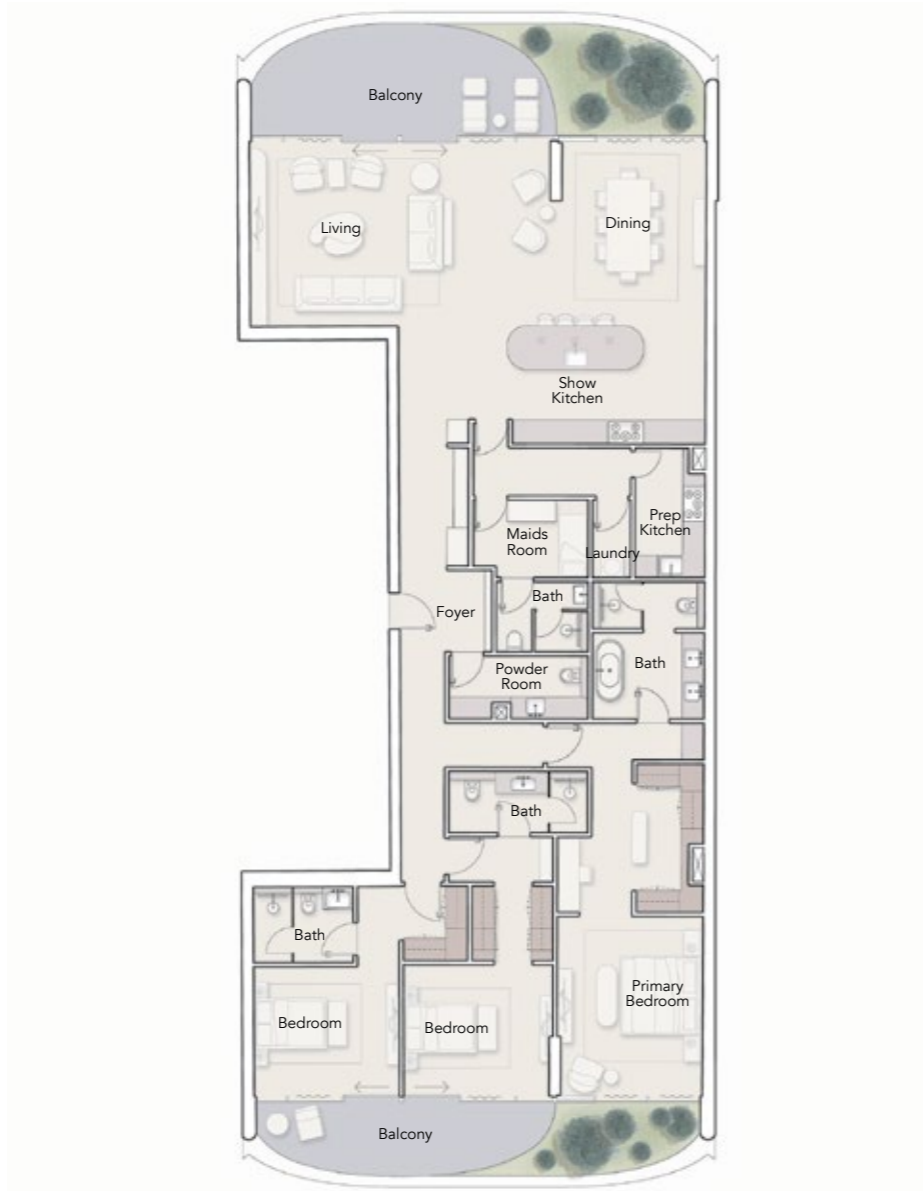
Lower Level

1st Floor



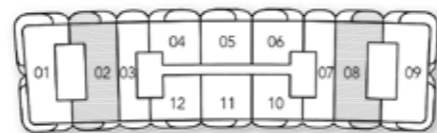
Upper Level

3 BEDROOM DUAL ASPECT



Internal Living Area	Outdoor Living Area	Total Living Area
2841.02 sq.ft	392.56 sq.ft	3233.58 sq.ft

2nd Floor - 7th Floor

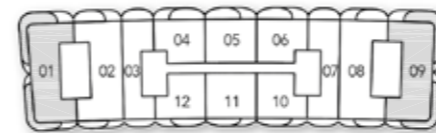


3 BEDROOM DUAL ASPECT
CORNER UNIT

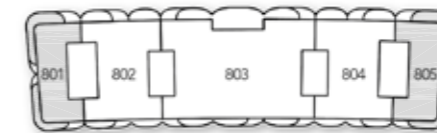


Internal Living Area	Outdoor Living Area	Total Living Area
2634.46 sq.ft	897.49 sq.ft	3531.96 sq.ft

2nd Floor - 7th Floor



8th Floor



3 BEDROOM DUPLEX



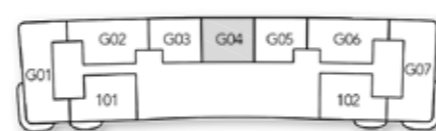
Internal Living Area	Outdoor Living Area	Total Living Area
3325.94 sq.ft	1443.98 sq.ft	4769.91 sq.ft

Ground Floor



Lower Level

1st Floor



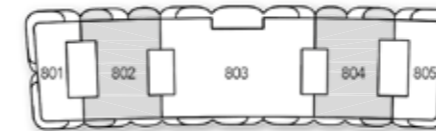
Upper Level

4 BEDROOM DUAL ASPECT

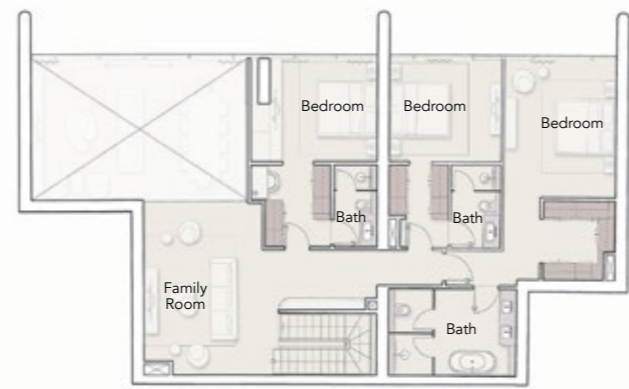


Internal Living Area	Outdoor Living Area	Total Living Area
4720.83 sq.ft	631.52 sq.ft	5352.35 sq.ft

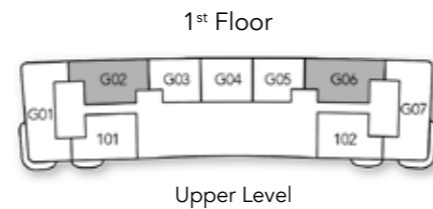
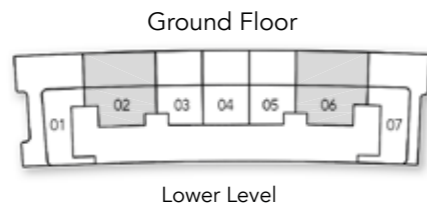
8th Floor



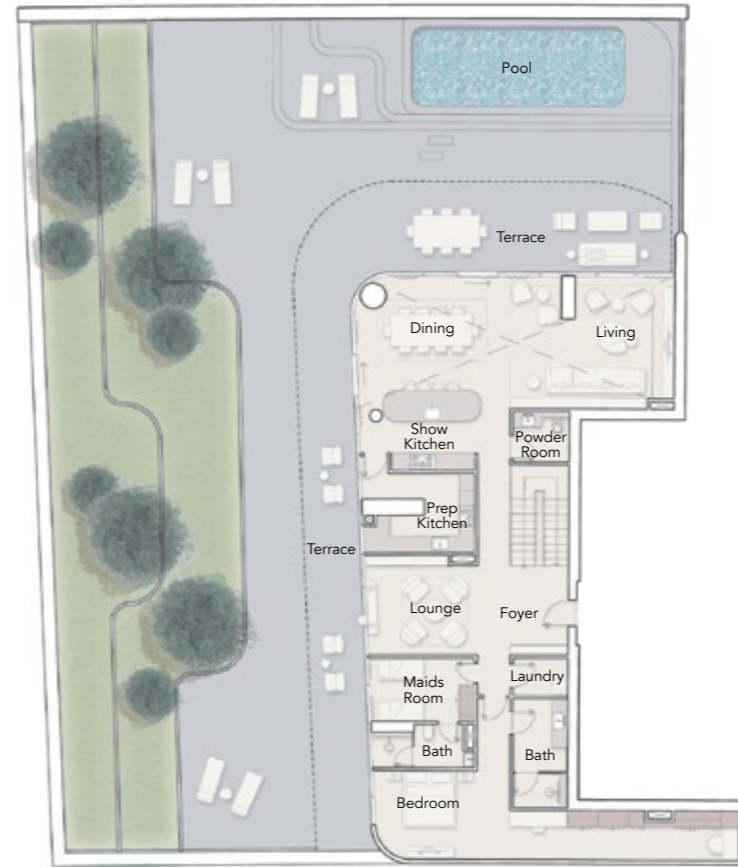
4 BEDROOM DUPLEX



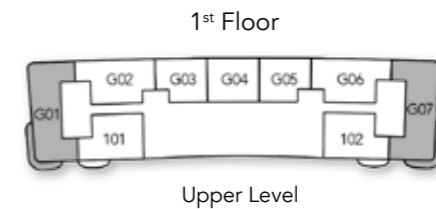
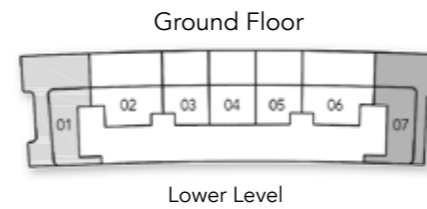
Internal Living Area	Outdoor Living Area	Total Living Area
3909.45 sq.ft	2230.28 sq.ft	6139.73 sq.ft



4 BEDROOM DUPLEX
CORNER UNIT



Internal Living Area	Outdoor Living Area	Total Living Area
4207.29 sq.ft	5710.03 sq.ft	9917.32 sq.ft



PRESIDENTIAL SUITE
6 BEDROOM DUAL ASPECT

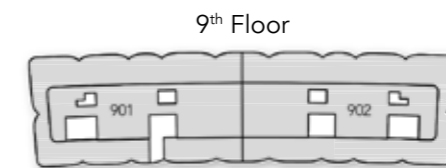


Internal Living Area
9917.32 sq.ft

Outdoor Living Area
1852.79 sq.ft

Total Living Area
11770.11 sq.ft

PENTHOUSE
5 BEDROOM CORNER ASPECT



Internal Living Area	Outdoor Living Area	Total Living Area
5952.97 sq.ft	8083.90 sq.ft	14036.88 sq.ft