

# The Crestmark



PROJECT BRIEF

THE NEXT WATERSIDE  
MASTERPIECE



## DRIVING DISTANCES

02  
MINUTES  
Business Bay Marina

05  
MINUTES  
Business Bay Metro Station

05  
MINUTES  
Dubai Mall / Burj Khalifa

08  
MINUTES  
Dubai Opera

08  
MINUTES  
City Walk

09  
MINUTES  
Dubai Design District

10  
MINUTES  
Museum of the Future

12  
MINUTES  
Meydan Golf Course

14  
MINUTES  
Dubai International Financial Centre

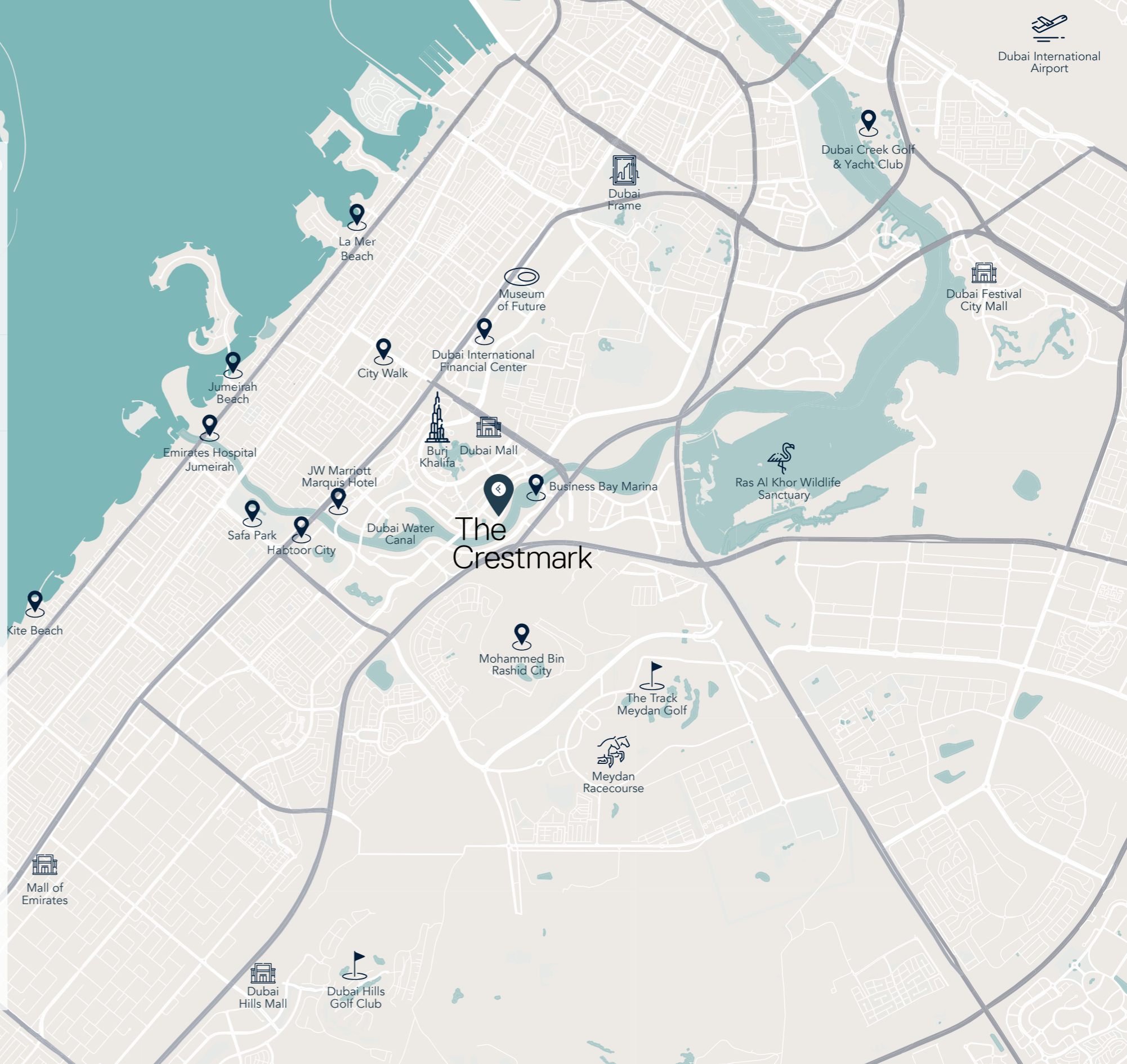
14  
MINUTES  
Dubai International Airport

15  
MINUTES  
Mall of the Emirates

17  
MINUTES  
La Mer Beach

19  
MINUTES  
Dubai Creek Golf & Yacht Club

20  
MINUTES  
Palm Jumeirah





# The Crestmark

The Crestmark celebrates the contemporary, promising a bold experience that melds with a serene palette of sophistication in its design. Set within the urban surroundings of Business Bay, it reflects the cosmopolitan lifestyles of its residents, whilst introducing pockets of calm through greenery and natural finishes. The balance of well-being in bustling city centres is represented in the holistic development, which utilizes cosy timber hues and elevated materials to cocoon and welcomes you into a refuge of relaxation. The Crestmark embodies the vibrant energy of Ellington.

# BUILDING CONFIGURATION

## ELEVATORS

4 passenger elevators  
1 service elevator

---

## ANTICIPATED SERVICE CHARGE

AED 18 per sq.ft

---

## ANTICIPATED COMPLETION DATE

Q1 2026

---

## PARKING

Studios, 1 and 2-bedroom: 1 car parking space  
3-bedroom: 2 car parking spaces

---

## OWNERSHIP

Freehold

RESIDENTIAL  
FLOORS

PODIUM  
FLOORS

GROUND  
FLOOR



## SIZE RANGE PER UNIT TYPE

### STUDIO

From 493 sq. ft to 538 sq. ft

### 1-BEDROOM

From 747 sq. ft to 1,074 sq. ft

### 2-BEDROOM

From 1,046 sq. ft to 1,584 sq. ft

### 3-BEDROOM

From 1,593 sq. ft to 3,080 sq. ft

### 3 TO 4-BEDROOM PENTHOUSE

From 2,742 sq. ft to 6,104 sq. ft

## NUMBER OF UNITS PER TYPE

Studios = 15 units

1-bedroom = 62 units

2-bedroom = 83 units

3-bedroom = 26 units

3 to 4-bedroom penthouses = 3 units

## PRICE RANGE PER UNIT TYPE

### STUDIOS

From 1,426,828 AED

### 1-BEDROOM

From 2,100,828 AED

### 2-BEDROOM

From 2,831,828 AED

### 3-BEDROOM

From 4,230,828 AED



# AMENITIES PLAN

# GROUND FLOOR PLAN

- ① Drop-off Area
- ② Lobby Entrance
- ③ Lobby Lounge
- ④ Lobby Reception
- ⑤ Library Area
- ⑥ Hub Desk
- ⑦ Lift Lobby
- ⑧ Kidtropolis World
- ⑨ Service Lift
- ⑩ Move-in Truck Zone
- ⑪ Bicycle Parking with Wash Area
- ⑫ Visitor Parking
- ⑬ Curved Outdoor Bench
- ⑭ Access to Canal Boardwalk
- ⑮ Vehicle Entrance
- ⑯ Vehicle Exit

## KIDTROPOLIS WORLD







ELLINGTON

LOBBY RECEPTION



LOBBY LIBRARY LOUNGE



Full Service  
**Garage**  
with  
Change Room & Wash

GRECERY

BARBER SHOP

Menu

STEAK SANDWICH	4.50
HAMBURGER	2.50
HOT DOG	2.00
FRENCH FRIES	2.50
SANDWICH	3.50
SODA POP	0.50
MILKSHAKE	2.50

Menu

SMOOTHIE	3.50
ICE CREAM	2.00
PIZZA	5.50
EGG	2.50
POP	0.50
SKEL	2.00

GAS

KIDTROPOLIS WORLD



ELLINGTON

DUBAI WATER CANAL

4<sup>TH</sup>

# FLOOR PLAN

- ① Leisure & Lounge Pool
- ② Infinity Pool Area
- ③ Cabanas
- ④ Baja Shelf
- ⑤ Kids Pool
- ⑥ Pool Sun Loungers Area
- ⑦ Access to Pool Deck & Courtyard
- ⑧ Mini Bowling Alley
- ⑨ Arcade Room Lounge Seats
- ⑩ Arcade Machines
- ⑪ Games Table
- ⑫ Skee Ball Area
- ⑬ TV Game Room
- ⑭ Courtyard
- ⑮ Kinetic Garden
- ⑯ Secret Club Room
- ⑰ Bar & Kitchenette
- ⑱ Dining & Lounge Area
- ⑲ Club Room Terrace
- ⑳ Female Change, Steam, Sauna & Shower
- ㉑ Male Change, Steam, Sauna & Shower
- ㉒ Functional Training Zone
- ㉓ Treadwall
- ㉔ Fitness Studio
- ㉕ Lift Lobby
- ㉖ Barbeque Area
- ㉗ Outdoor Yoga Area
- ㉘ Outdoor Kids Play Area
- ㉙ Indoor Yoga Area
- ㉚ Zen Room
- ㉛ Access to Wellness Studio





POOL DECK



KIDS POOL



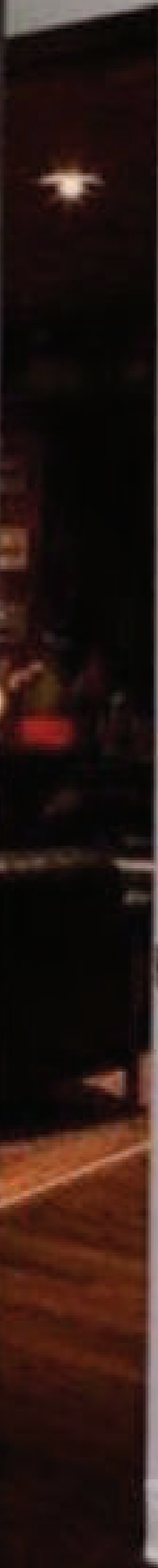
ARCADE ROOM - MINI BOWLING ALLEY, SKEE BALL, ARCADE MACHINES





NEVER  
GIVE  
UP

FITNESS STUDIO & TREADWALL



Shhh...

SECRET CLUB ROOM



OUTDOOR KIDS PLAY



BARBEQUE AREA



WELLNESS STUDIO

APARTMENTS



KITCHEN



BATHROOM





HOME AUTOMATION