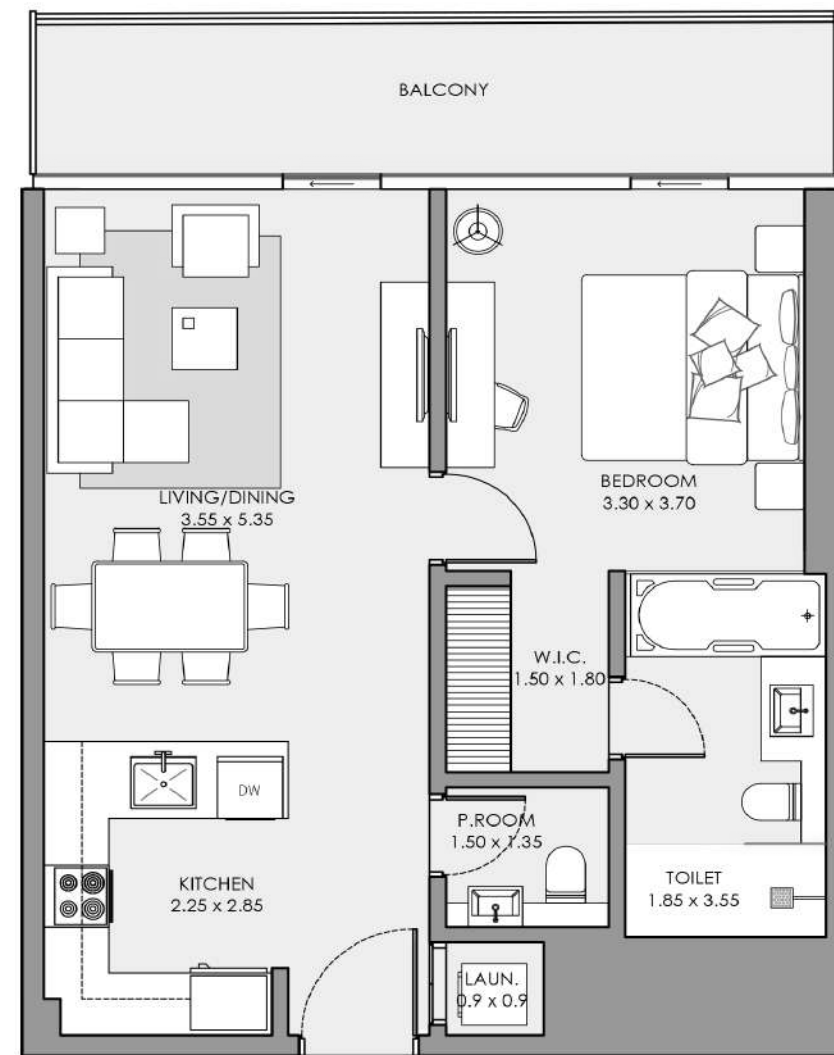


1 BEDROOM APARTMENT

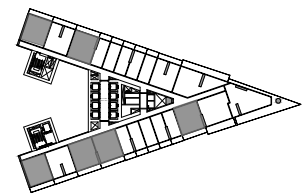
TOTAL 771 SQFT / TYPE 1BR-01

INTERIOR AREA / 650 sq.ft.
BALCONY AREA / 121 sq.ft.
NET AREA / 771 sq.ft.



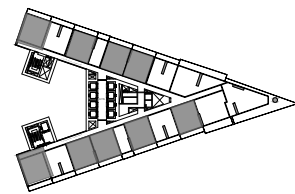
KEY PLAN

Sea View



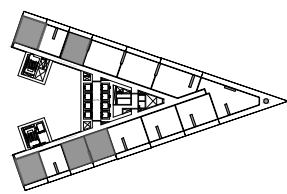
Sea View & Dubai Skyline
Floors / 1st to 7th

Sea View



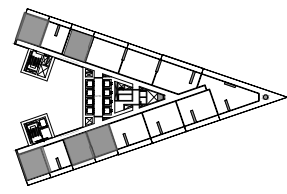
Sea View & Dubai Skyline
Floors / 8th to 10th

Sea View



Sea View & Dubai Skyline
Floors / 11th to 19th

Sea View



Sea View & Dubai Skyline
Floors / 20th to 25th

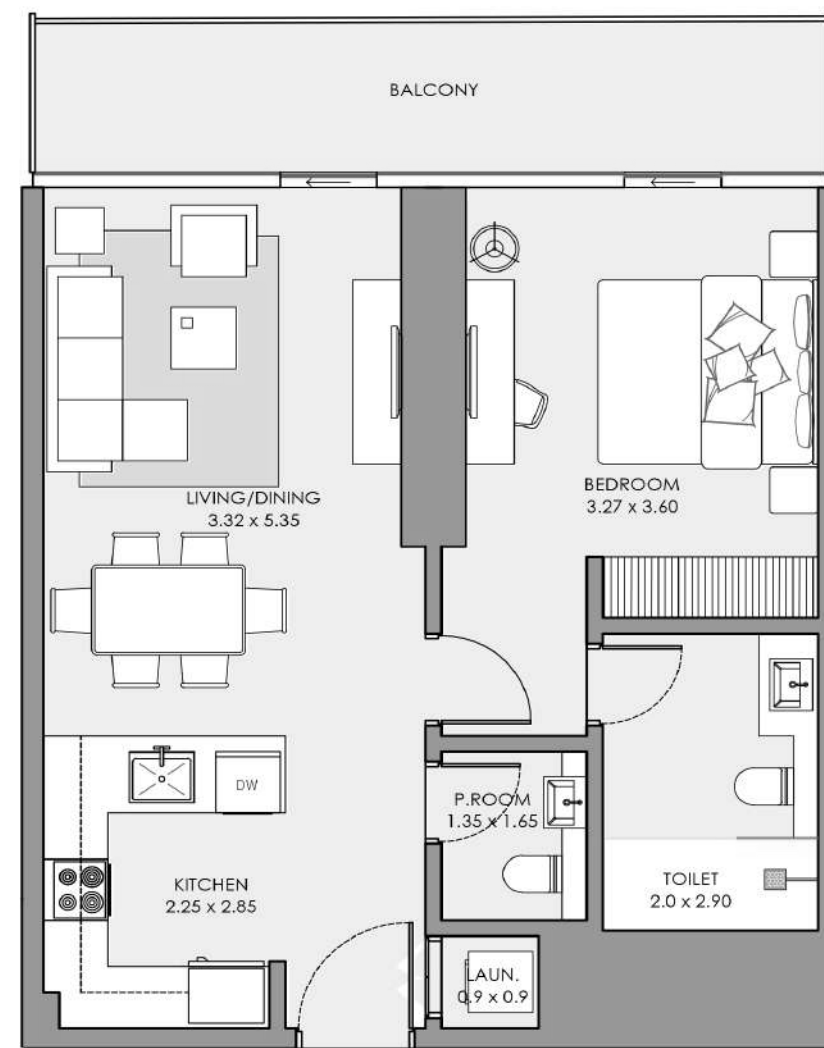
All pictures, plans, layouts, information, data and details included in this brochure are indicative only and may change at any time in accordance with the final designs of the project, regulatory approvals and planning permissions.

All pictures, plans, layouts, information, data and details included in this brochure are indicative only and may change at any time in accordance with the final designs of the project, regulatory approvals and planning permissions.

1 BEDROOM APARTMENT

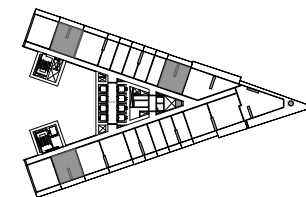
TOTAL 772 SQFT / TYPE 1BR-02

INTERIOR AREA / 650 sq.ft.
BALCONY AREA / 122 sq.ft.
NET AREA / 772 sq.ft.



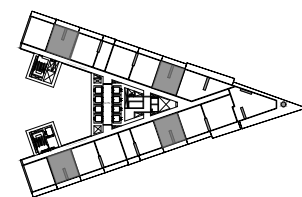
KEY PLAN

Sea View



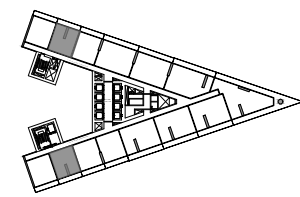
Sea View & Dubai Skyline
Floors / 1st to 7th

Sea View



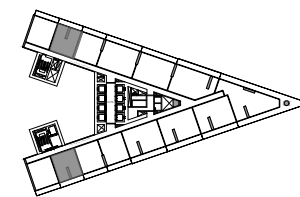
Sea View & Dubai Skyline
Floors / 8th to 10th

Sea View



Sea View & Dubai Skyline
Floors / 11th to 19th

Sea View



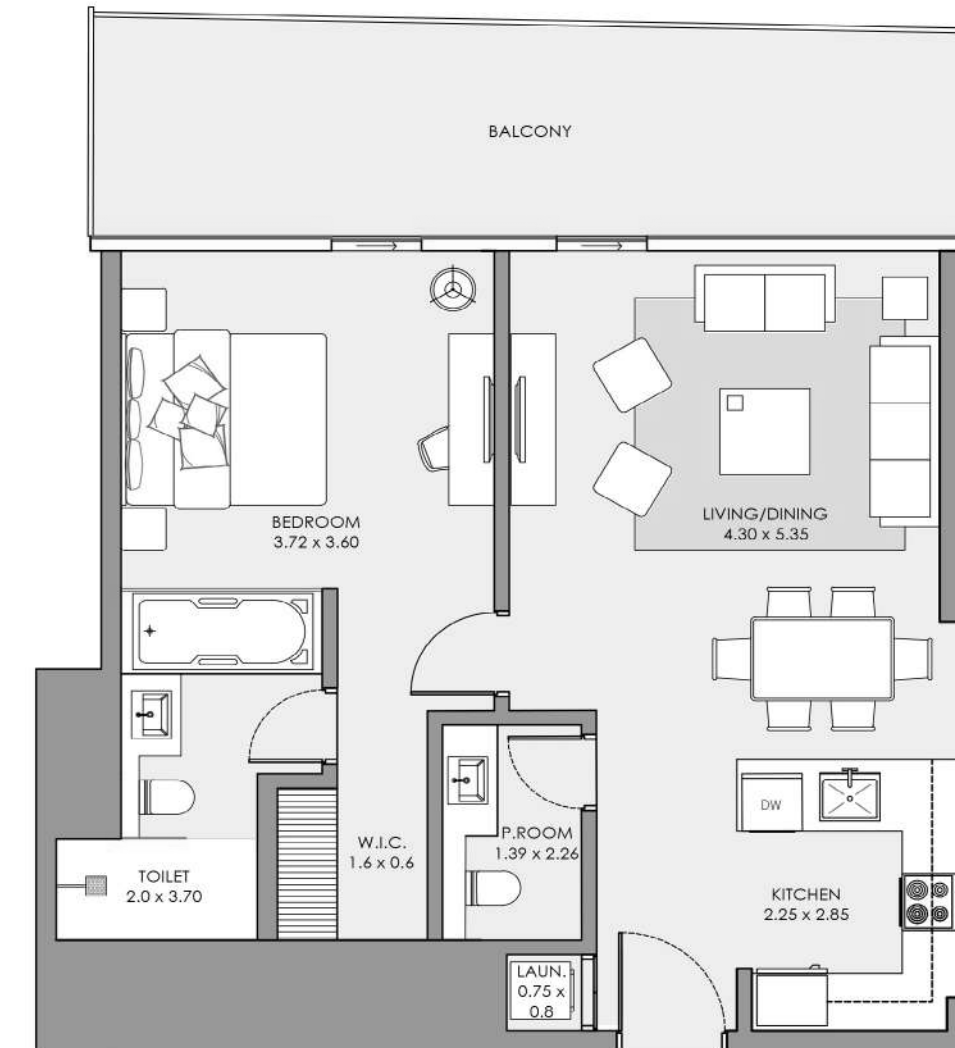
Sea View & Dubai Skyline
Floors / 20th to 25th

All pictures, plans, layouts, information, data and details included in this brochure are indicative only and may change at any time in accordance with the final designs of the project, regulatory approvals and planning permissions.

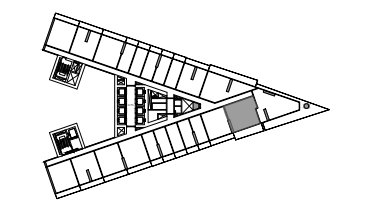
1 BEDROOM APARTMENT

TOTAL 906 SQFT / TYPE 1BR-03

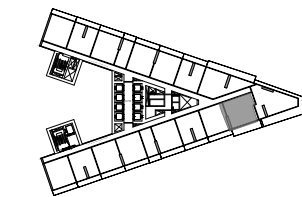
INTERIOR AREA / 750 sq.ft.
BALCONY AREA / 156 sq.ft.
NET AREA / 906 sq.ft.



KEY PLAN



Sea View & Dubai Skyline
Floors / 1st to 7th



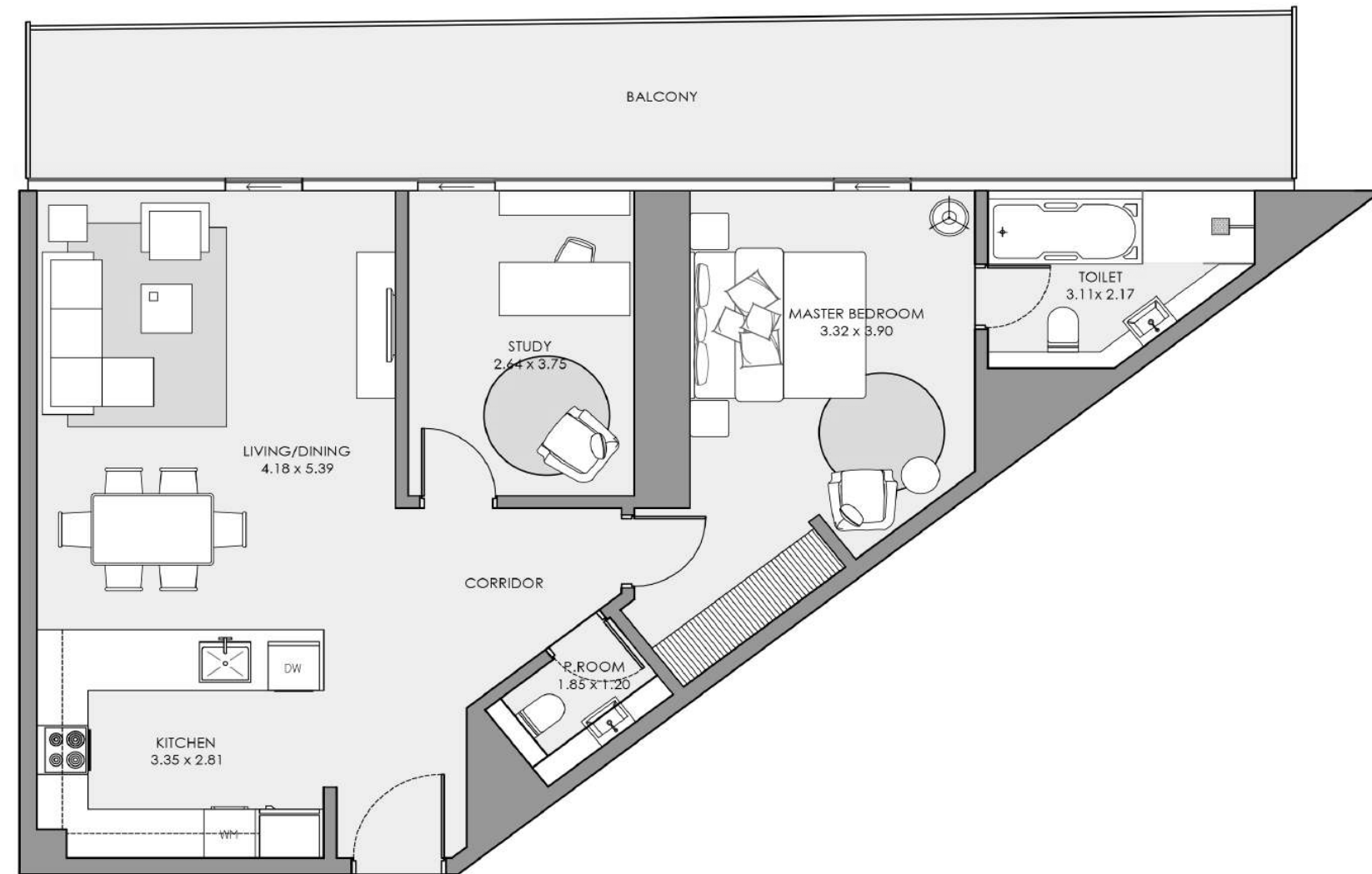
Sea View & Dubai Skyline
Floors / 8th to 10th

All pictures, plans, layouts, information, data and details included in this brochure are indicative only and may change at any time in accordance with the final designs of the project, regulatory approvals and planning permissions.

1 BEDROOM APARTMENT

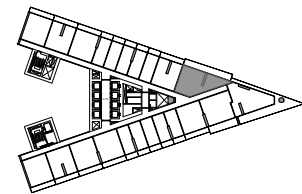
TOTAL 1,181 SQFT / TYPE 1BR-WITH STUDY

INTERIOR AREA / 925 sq.ft.
BALCONY AREA / 256 sq.ft.
NET AREA / 1,181 sq.ft.



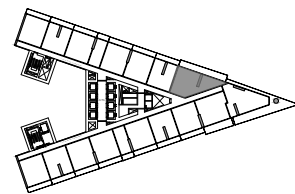
KEY PLAN

Sea View



Floors / 1st to 7th

Sea View



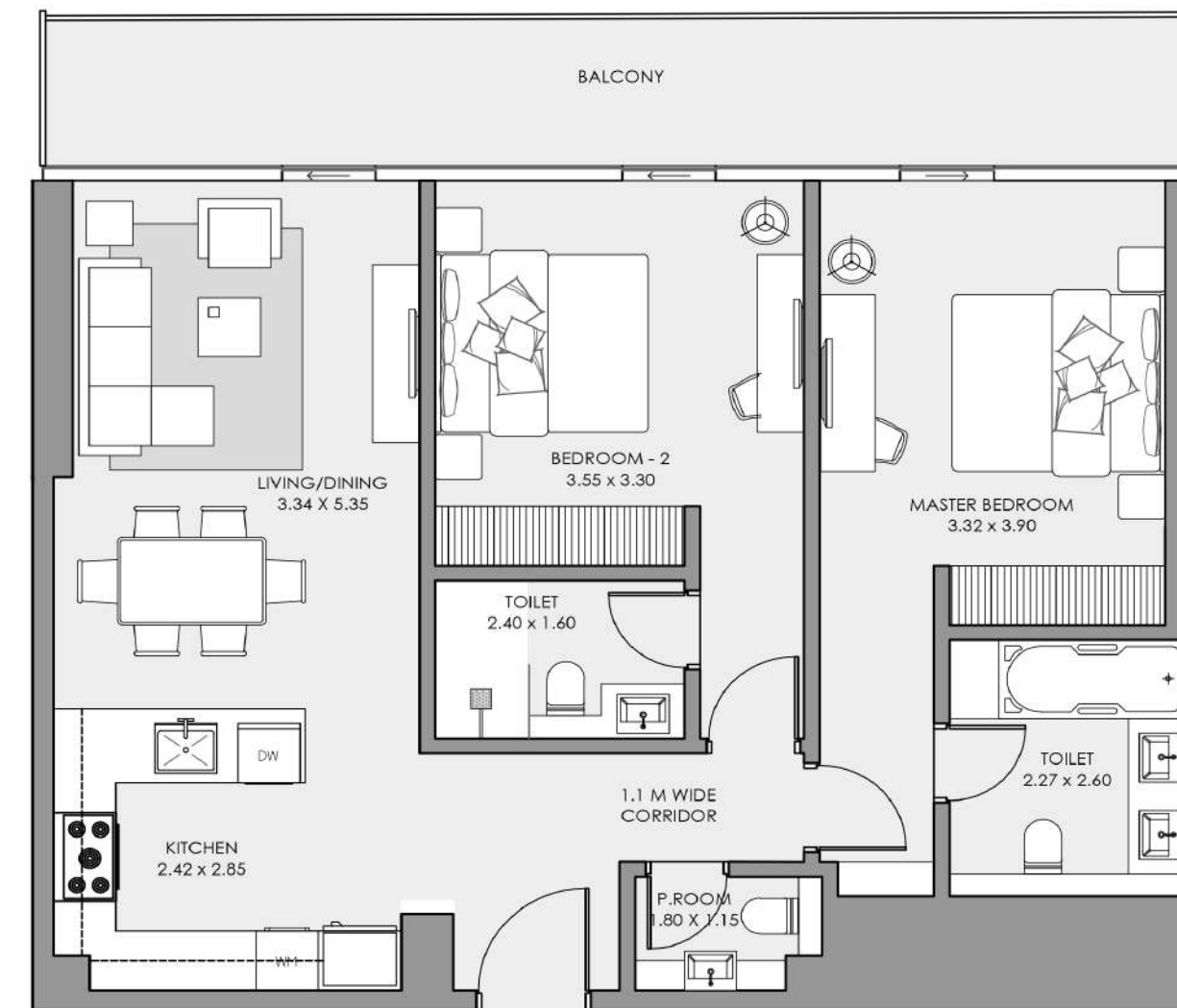
Floors / 8th to 10th

All pictures, plans, layouts, information, data and details included in this brochure are indicative only and may change at any time in accordance with the final designs of the project, regulatory approvals and planning permissions.

2 BEDROOM APARTMENT

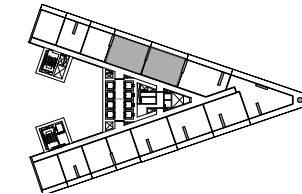
TOTAL 1,151 SQFT / TYPE 2BR-01

INTERIOR AREA / 970 sq.ft.
BALCONY AREA / 181 sq.ft.
NET AREA / 1,151 sq.ft.



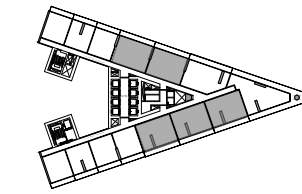
KEY PLAN

Sea View



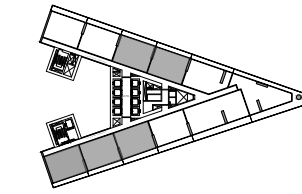
Floors / 11th to 19th

Sea View



Sea View & Dubai Skyline
Floors / 20th to 25th

Sea View



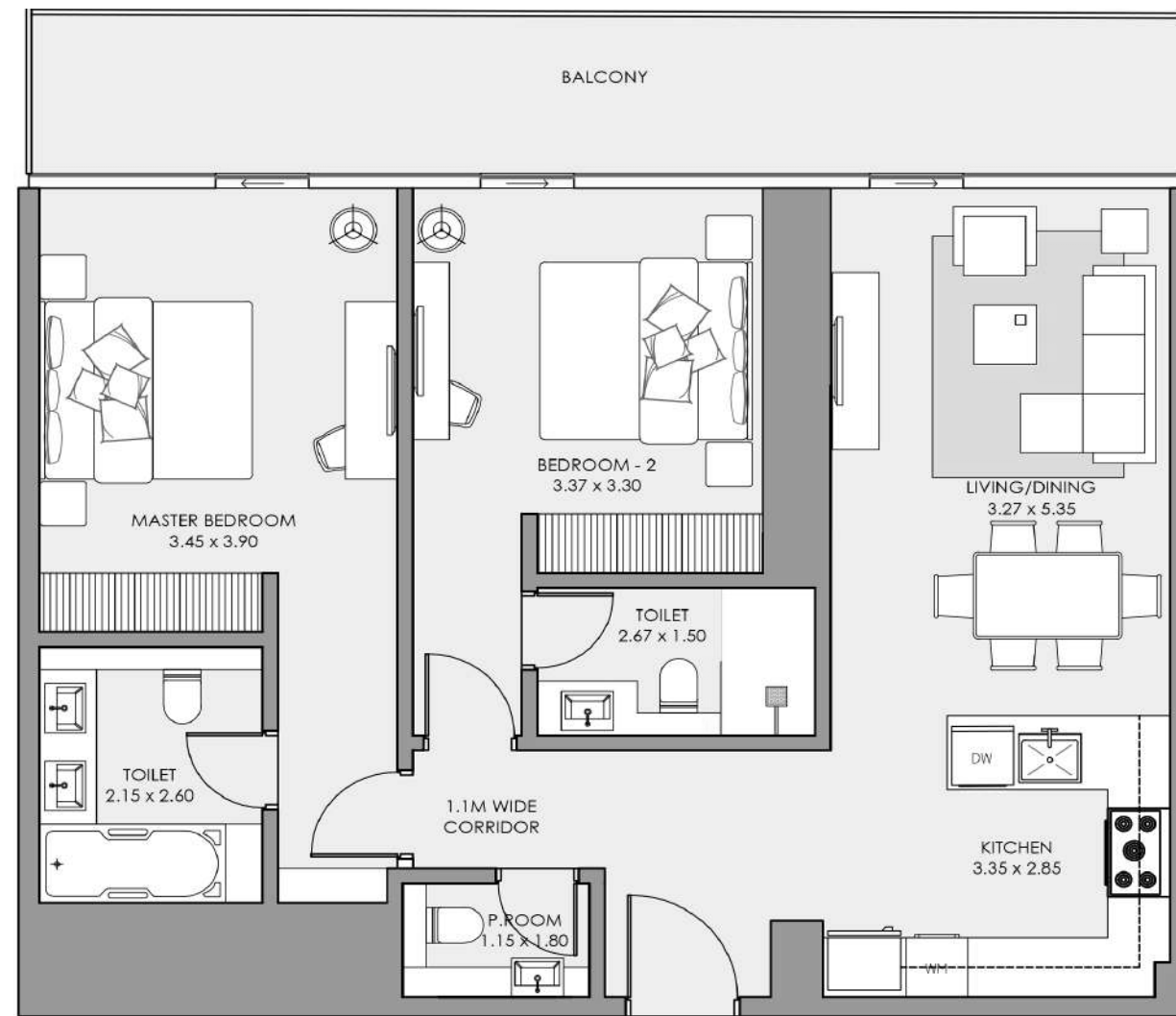
Sea View & Dubai Skyline
Floors / 26th to 37th

All pictures, plans, layouts, information, data and details included in this brochure are indicative only and may change at any time in accordance with the final designs of the project, regulatory approvals and planning permissions.

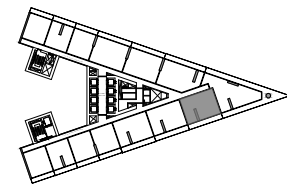
2 BEDROOM APARTMENT

TOTAL 1,161 SQFT / TYPE 2BR-01A

INTERIOR AREA / 970 sq.ft.
BALCONY AREA / 191 sq.ft.
NET AREA / 1,161 sq.ft.



KEY PLAN



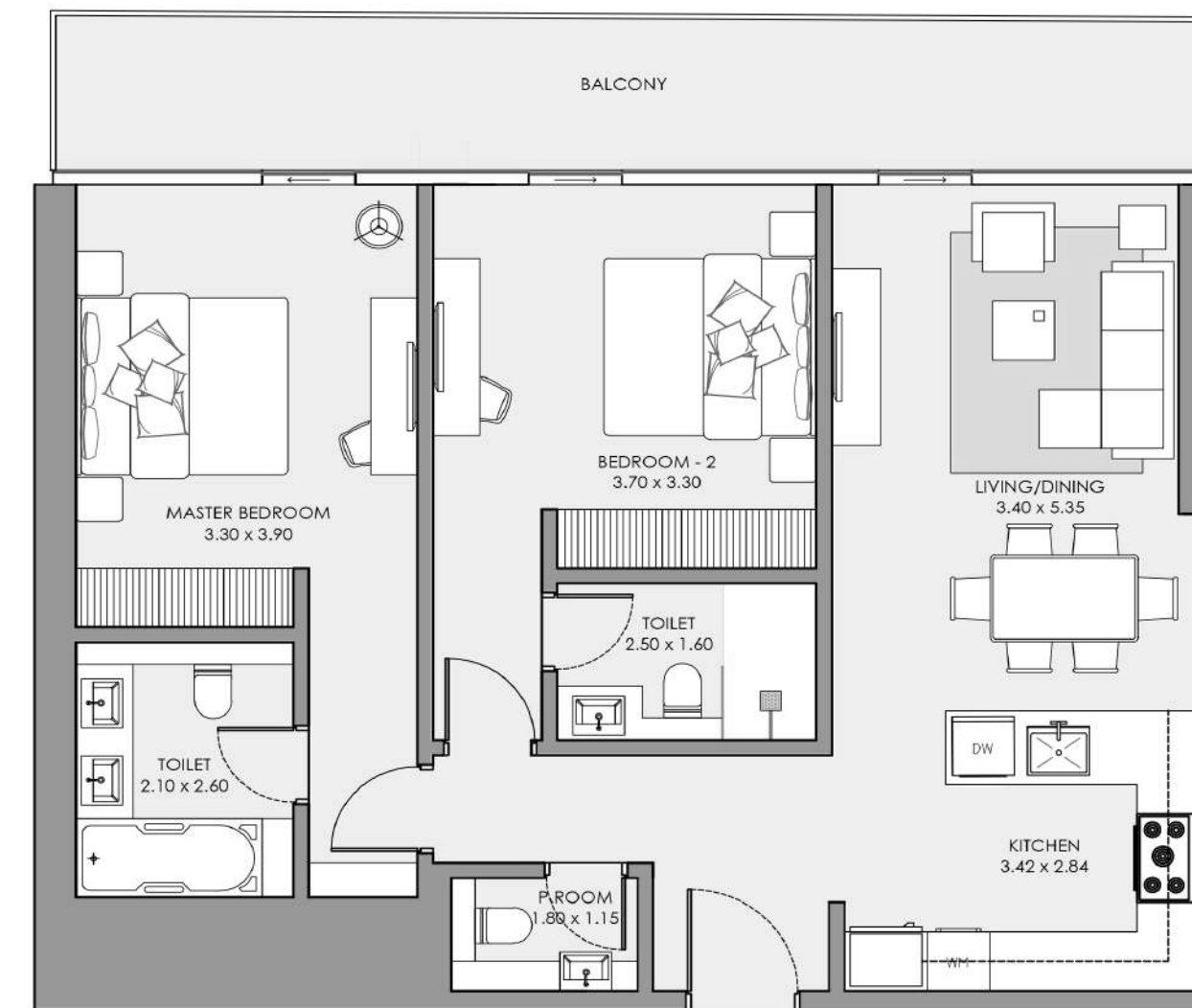
Sea View & Dubai Skyline
Floors / 11th to 19th

All pictures, plans, layouts, information, data and details included in this brochure are indicative only and may change at any time in accordance with the final designs of the project, regulatory approvals and planning permissions.

2 BEDROOM APARTMENT

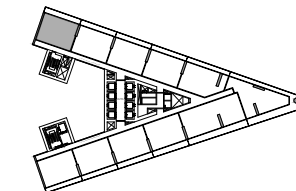
TOTAL 1,149 SQFT / TYPE 2BR-01B

INTERIOR AREA / 970 sq.ft.
BALCONY AREA / 179 sq.ft.
NET AREA / 1,149 sq.ft.



KEY PLAN

Sea View



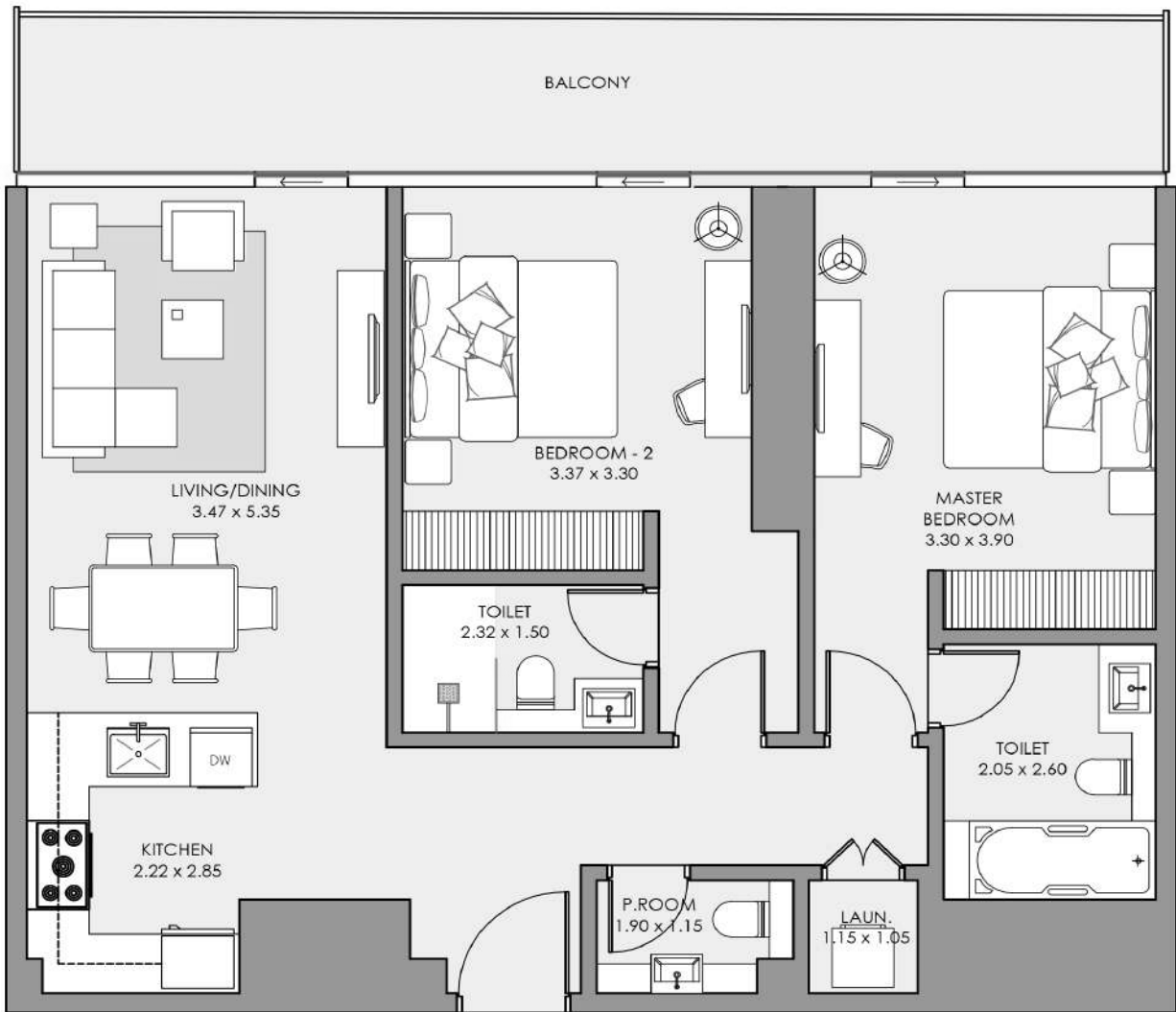
Floors / 26th to 37th

All pictures, plans, layouts, information, data and details included in this brochure are indicative only and may change at any time in accordance with the final designs of the project, regulatory approvals and planning permissions.

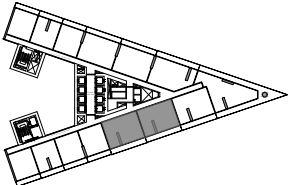
2 BEDROOM APARTMENT

TOTAL 1,157 SQFT / TYPE 2BR-02

INTERIOR AREA / 970 sq.ft.
 BALCONY AREA / 187 sq.ft.
 NET AREA / 1,157 sq.ft.



KEY PLAN



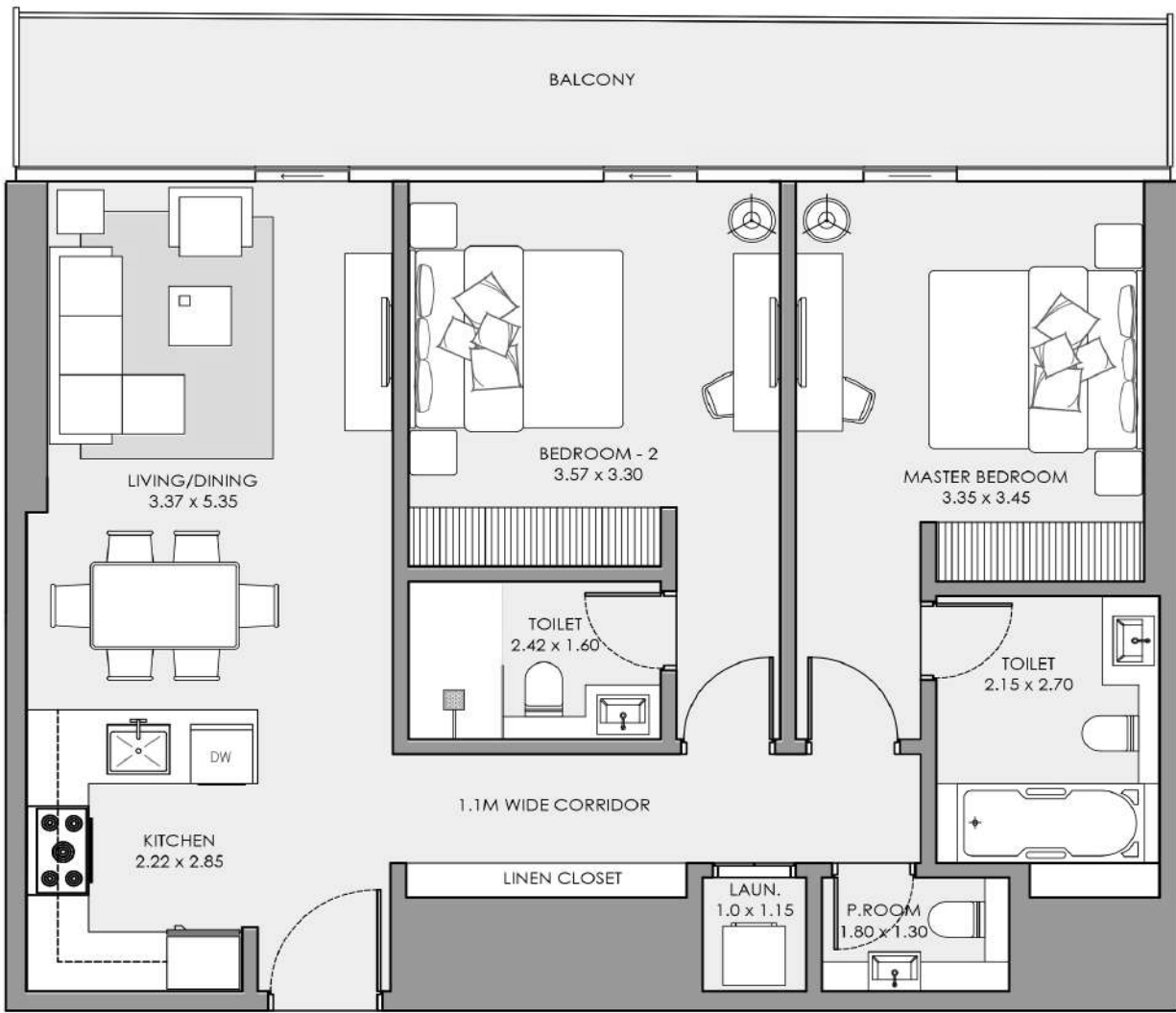
Sea View & Dubai Skyline
 Floors / 11th to 19th

All pictures, plans, layouts, information, data and details included in this brochure are indicative only and may change at any time in accordance with the final designs of the project, regulatory approvals and planning permissions.

2 BEDROOM APARTMENT

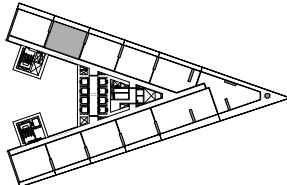
TOTAL 1,150 SQFT / TYPE 2BR-02A

INTERIOR AREA / 970 sq.ft.
 BALCONY AREA / 180 sq.ft.
 NET AREA / 1,150 sq.ft.



KEY PLAN

Sea View



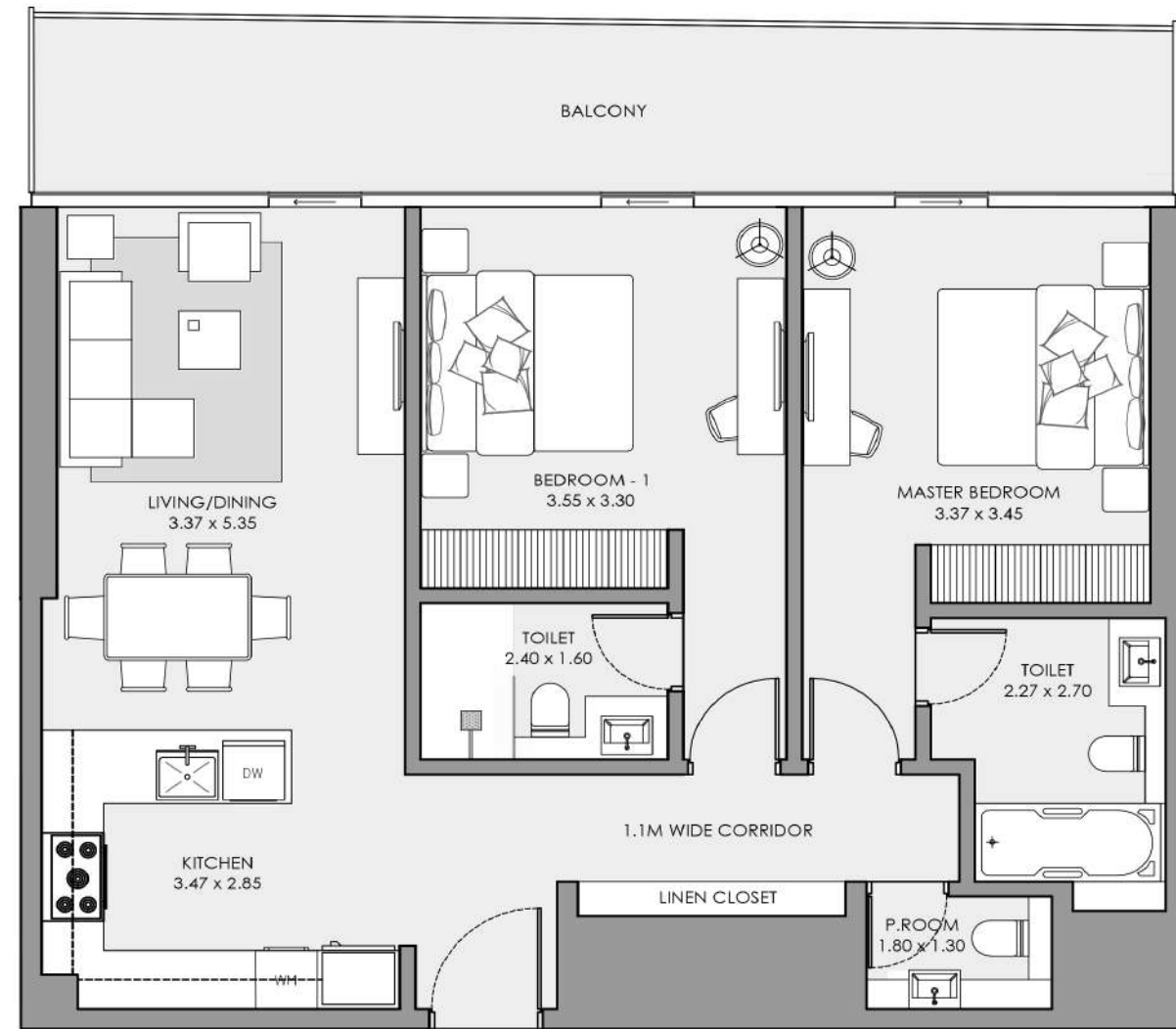
Floors / 26th to 37th

All pictures, plans, layouts, information, data and details included in this brochure are indicative only and may change at any time in accordance with the final designs of the project, regulatory approvals and planning permissions.

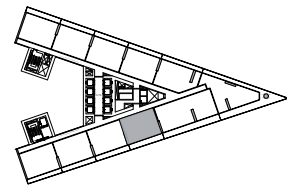
2 BEDROOM APARTMENT

TOTAL 1,163 SQFT / TYPE 2BR-03

INTERIOR AREA / 970 sq.ft.
BALCONY AREA / 193 sq.ft.
NET AREA / 1,163 sq.ft.



KEY PLAN



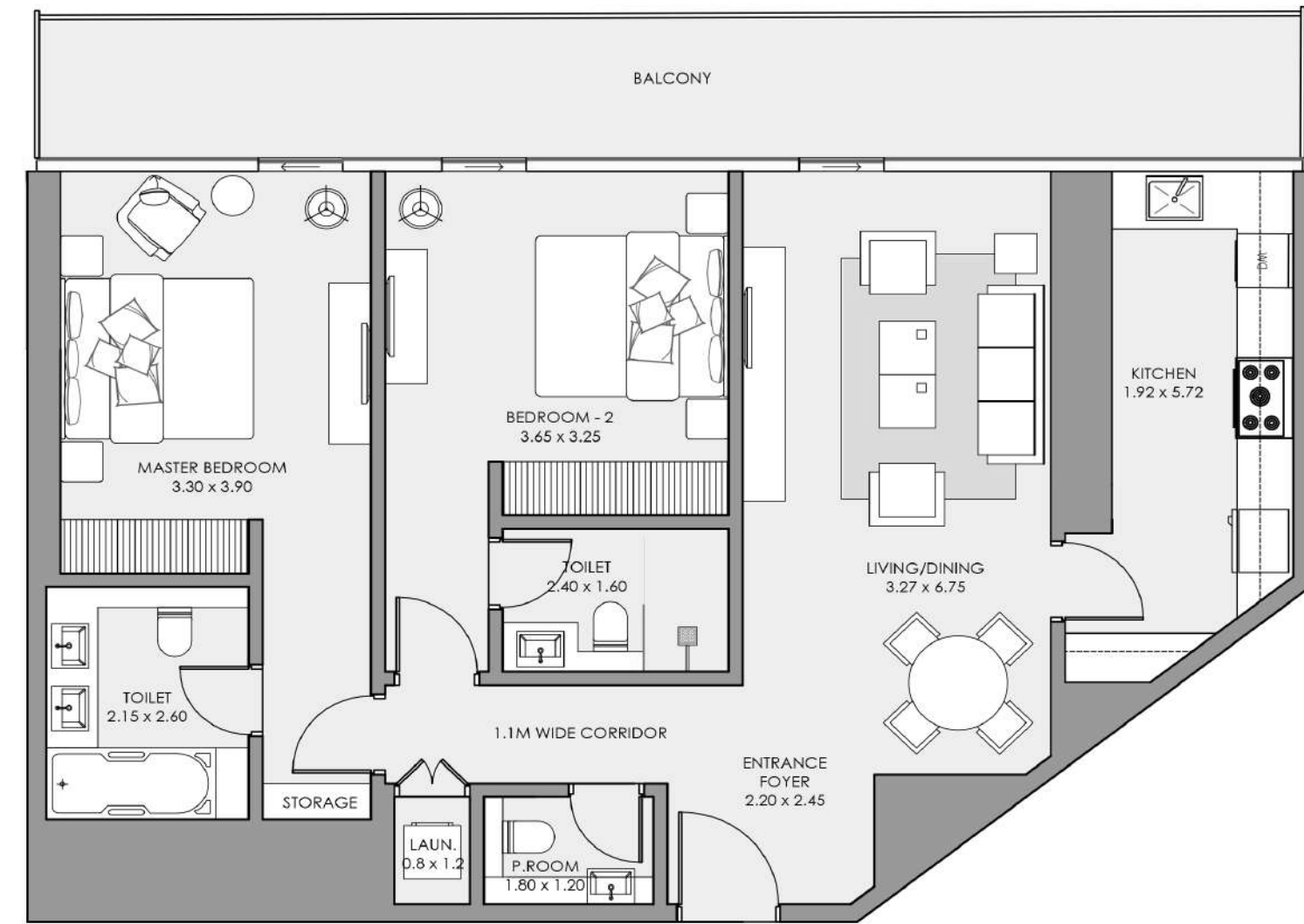
Sea View & Dubai Skyline
Floors / 26th to 37th

All pictures, plans, layouts, information, data and details included in this brochure are indicative only and may change at any time in accordance with the final designs of the project, regulatory approvals and planning permissions.

2 BEDROOM APARTMENT

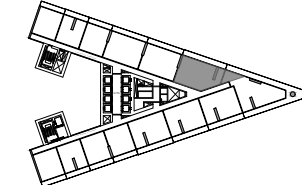
TOTAL 1,312 SQFT / TYPE 2BR-04

INTERIOR AREA / 1,075 sq.ft.
BALCONY AREA / 237 sq.ft.
NET AREA / 1,312 sq.ft.



KEY PLAN

Sea View



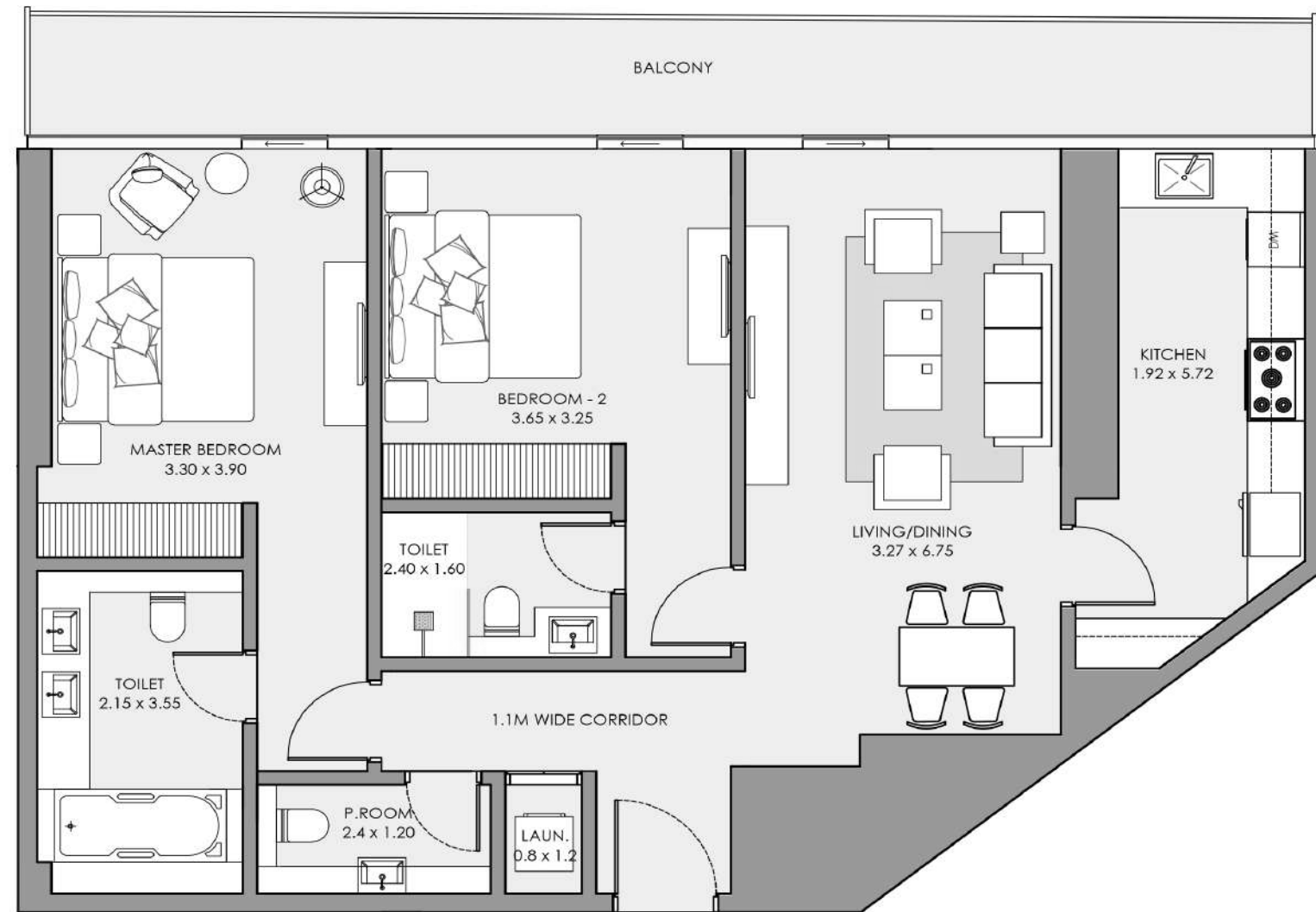
Floors / 11th to 19th

All pictures, plans, layouts, information, data and details included in this brochure are indicative only and may change at any time in accordance with the final designs of the project, regulatory approvals and planning permissions.

2 BEDROOM APARTMENT

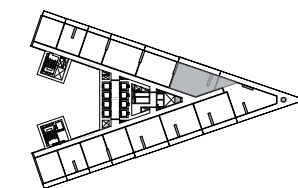
TOTAL 1,328 SQFT / TYPE 2BR-04A

INTERIOR AREA / 1,090 sq.ft.
BALCONY AREA / 238 sq.ft.
NET AREA / 1,328 sq.ft.



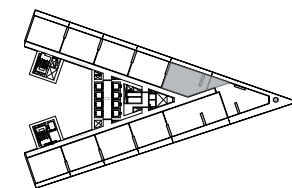
KEY PLAN

Sea View



Floors / 20th to 25th

Sea View



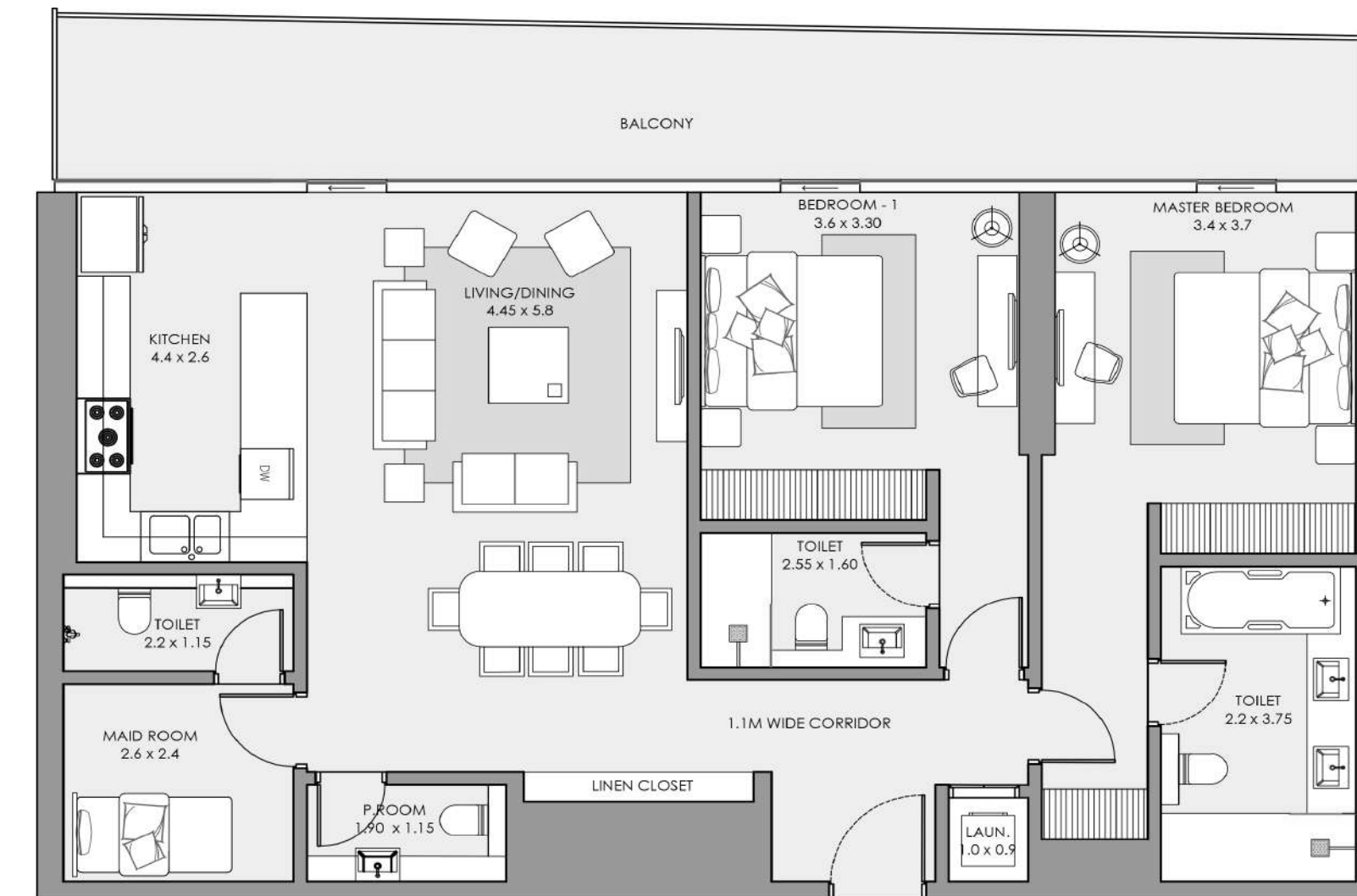
Floors / 26th to 37th

All pictures, plans, layouts, information, data and details included in this brochure are indicative only and may change at any time in accordance with the final designs of the project, regulatory approvals and planning permissions.

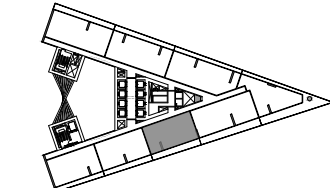
2 BEDROOM APARTMENT

TOTAL 1,570 SQFT / TYPE 2BR-SUITE A

INTERIOR AREA / 1,310 sq.ft.
BALCONY AREA / 260 sq.ft.
NET AREA / 1,570 sq.ft.



KEY PLAN



Sea View & Dubai Skyline

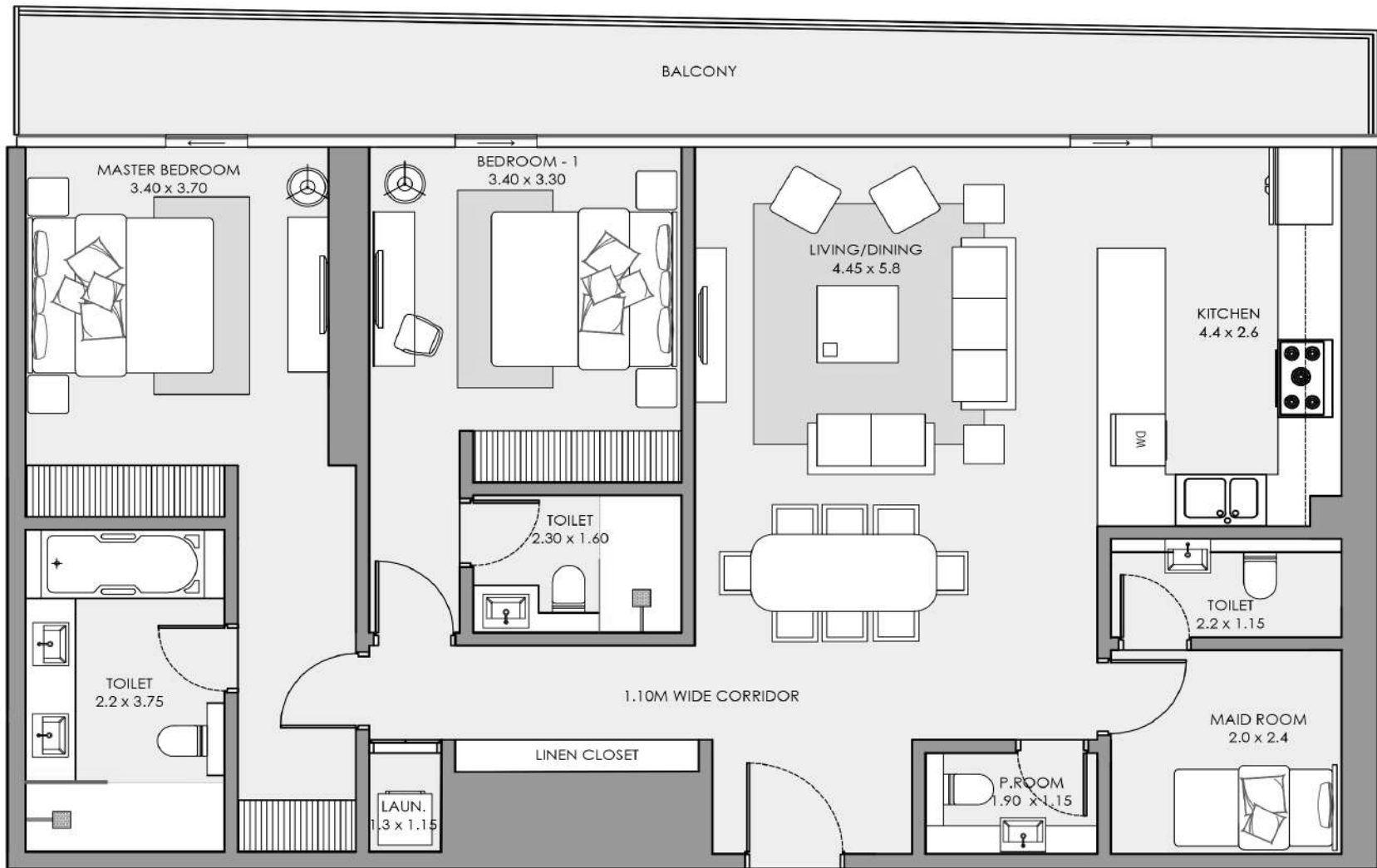
Floors / 38th to 41st

All pictures, plans, layouts, information, data and details included in this brochure are indicative only and may change at any time in accordance with the final designs of the project, regulatory approvals and planning permissions.

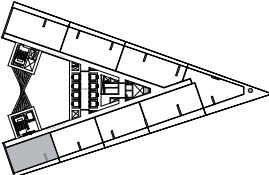
2 BEDROOM APARTMENT

TOTAL 1,550 SQFT / TYPE 2BR-SUITE B

INTERIOR AREA / 1,320 sq.ft.
 BALCONY AREA / 230 sq.ft.
 NET AREA / 1,550 sq.ft.



KEY PLAN



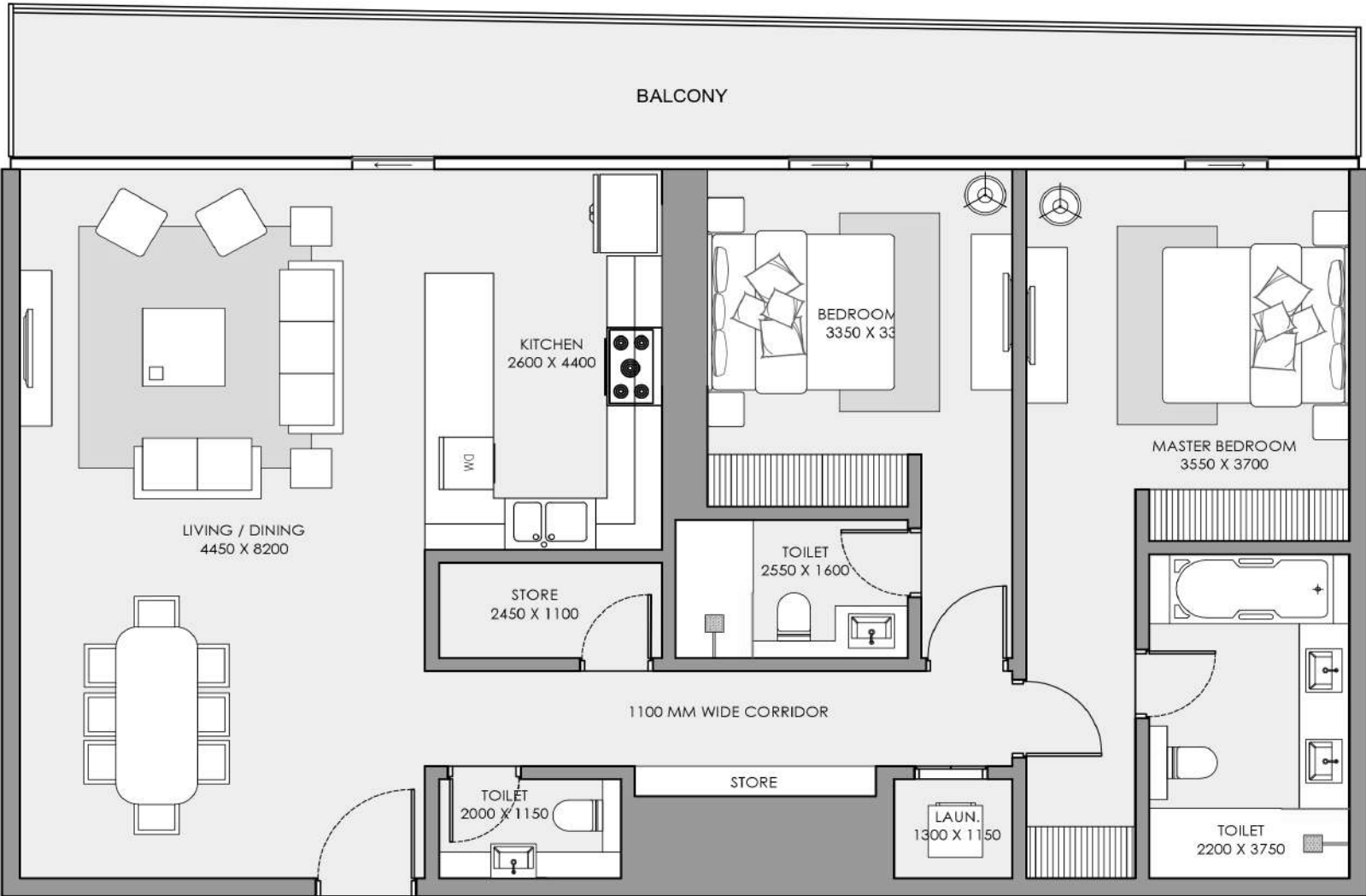
Sea View & Dubai Skyline
 Floors / 38th to 41st

All pictures, plans, layouts, information, data and details included in this brochure are indicative only and may change at any time in accordance with the final designs of the project, regulatory approvals and planning permissions.

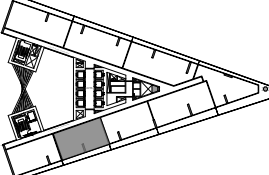
2 BEDROOM APARTMENT

TOTAL 1,560 SQFT / TYPE 2BR-SUITE C

INTERIOR AREA / 1,315 sq.ft.
 BALCONY AREA / 245 sq.ft.
 NET AREA / 1,560 sq.ft.



KEY PLAN



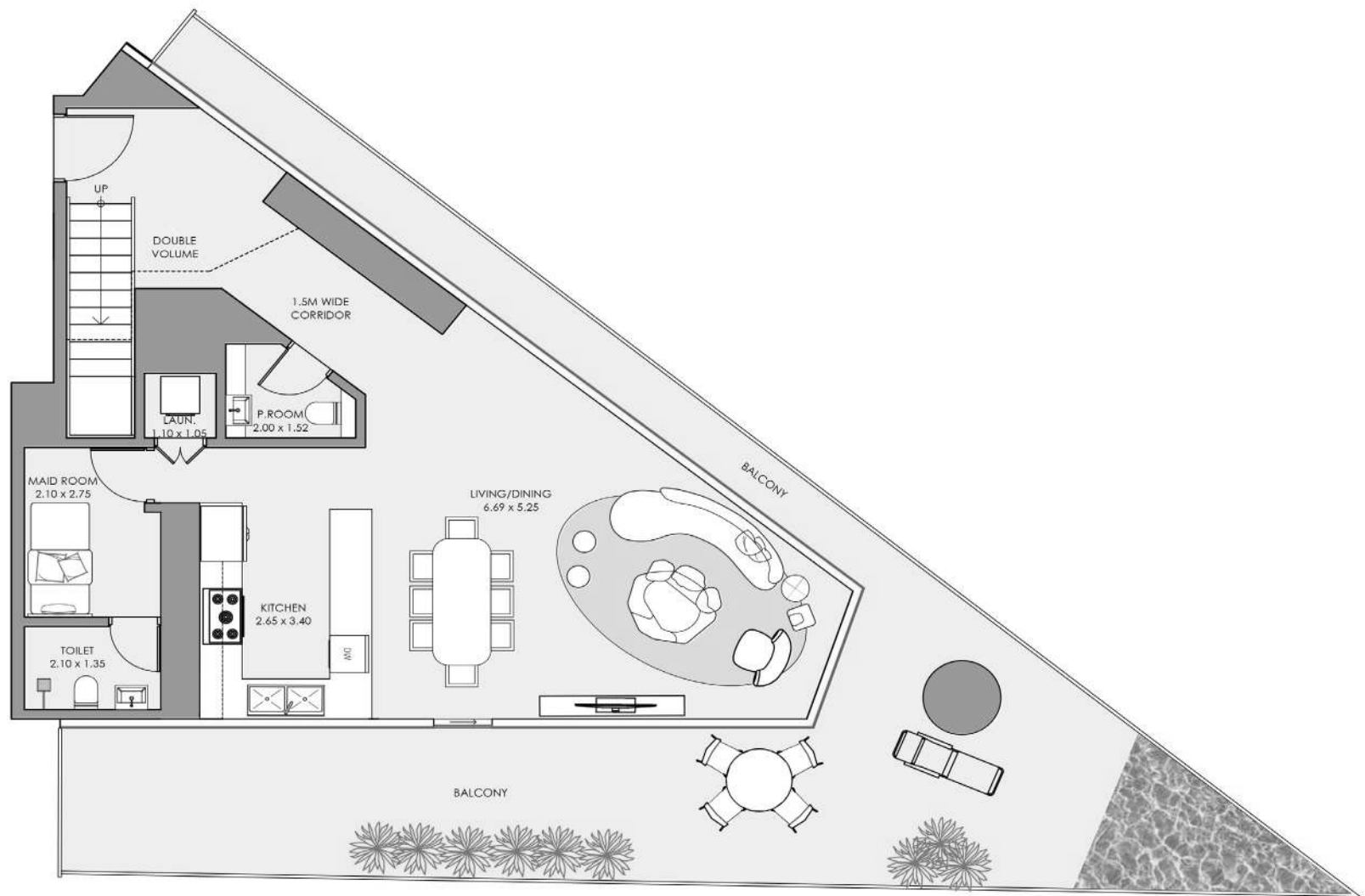
Sea View & Dubai Skyline
 Floors / 38th to 41st

All pictures, plans, layouts, information, data and details included in this brochure are indicative only and may change at any time in accordance with the final designs of the project, regulatory approvals and planning permissions.

2 BEDROOM APARTMENT

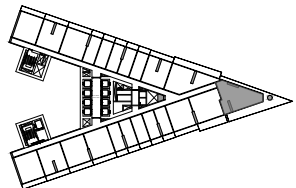
TOTAL 3,261 SQFT / TYPE ROYAL 2BR

INTERIOR AREA / 1,785 sq.ft.
 BALCONY AREA / 1,476 sq.ft.
 NET AREA / 3,261 sq.ft.



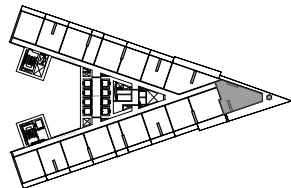
LOWER LEVEL

KEY PLAN



Panoramic Sea View

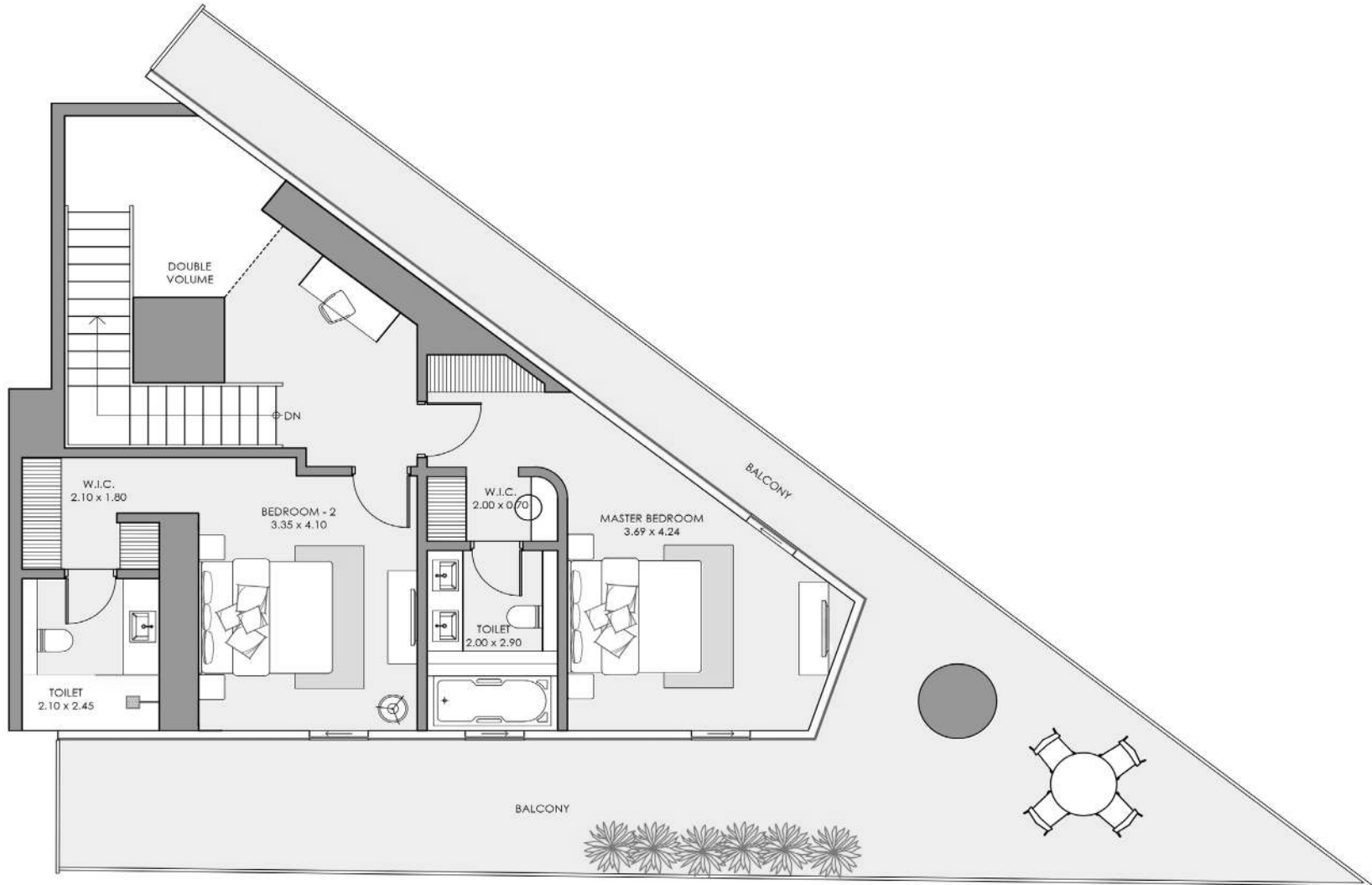
Floors / 1st to 7th



Panoramic Sea View

Floors / 8th to 10th

All pictures, plans, layouts, information, data and details included in this brochure are indicative only and may change at any time in accordance with the final designs of the project, regulatory approvals and planning permissions.



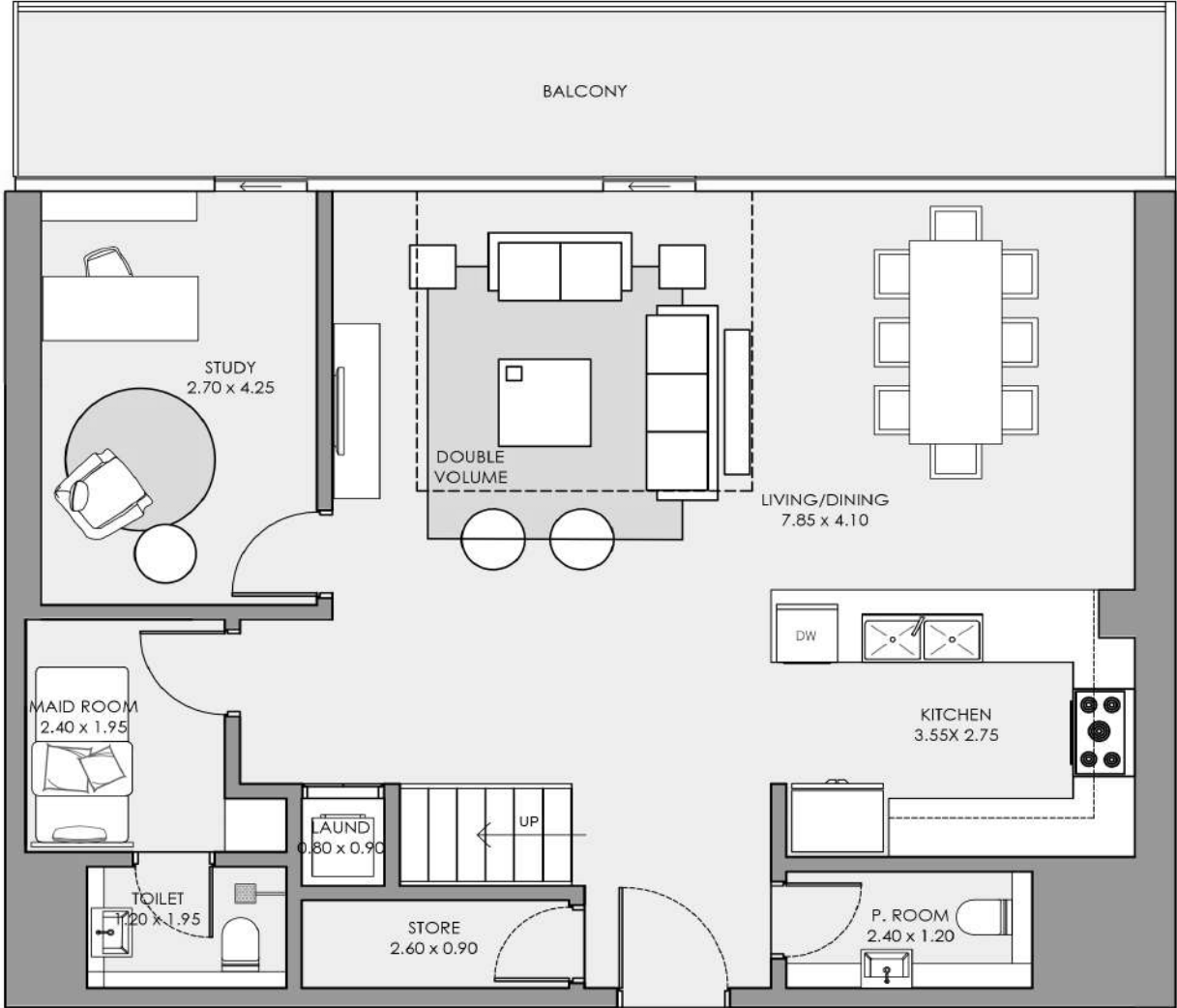
UPPER LEVEL

All pictures, plans, layouts, information, data and details included in this brochure are indicative only and may change at any time in accordance with the final designs of the project, regulatory approvals and planning permissions.

2 BEDROOM APARTMENT

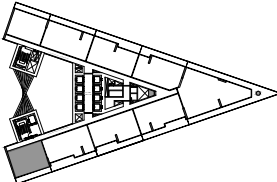
TOTAL 2,270 SQFT / TYPE 2BR-EXECUTIVE-DUPLEX

INTERIOR AREA / 1,885 sq.ft.
 BALCONY AREA / 385 sq.ft.
 NET AREA / 2,270 sq.ft.



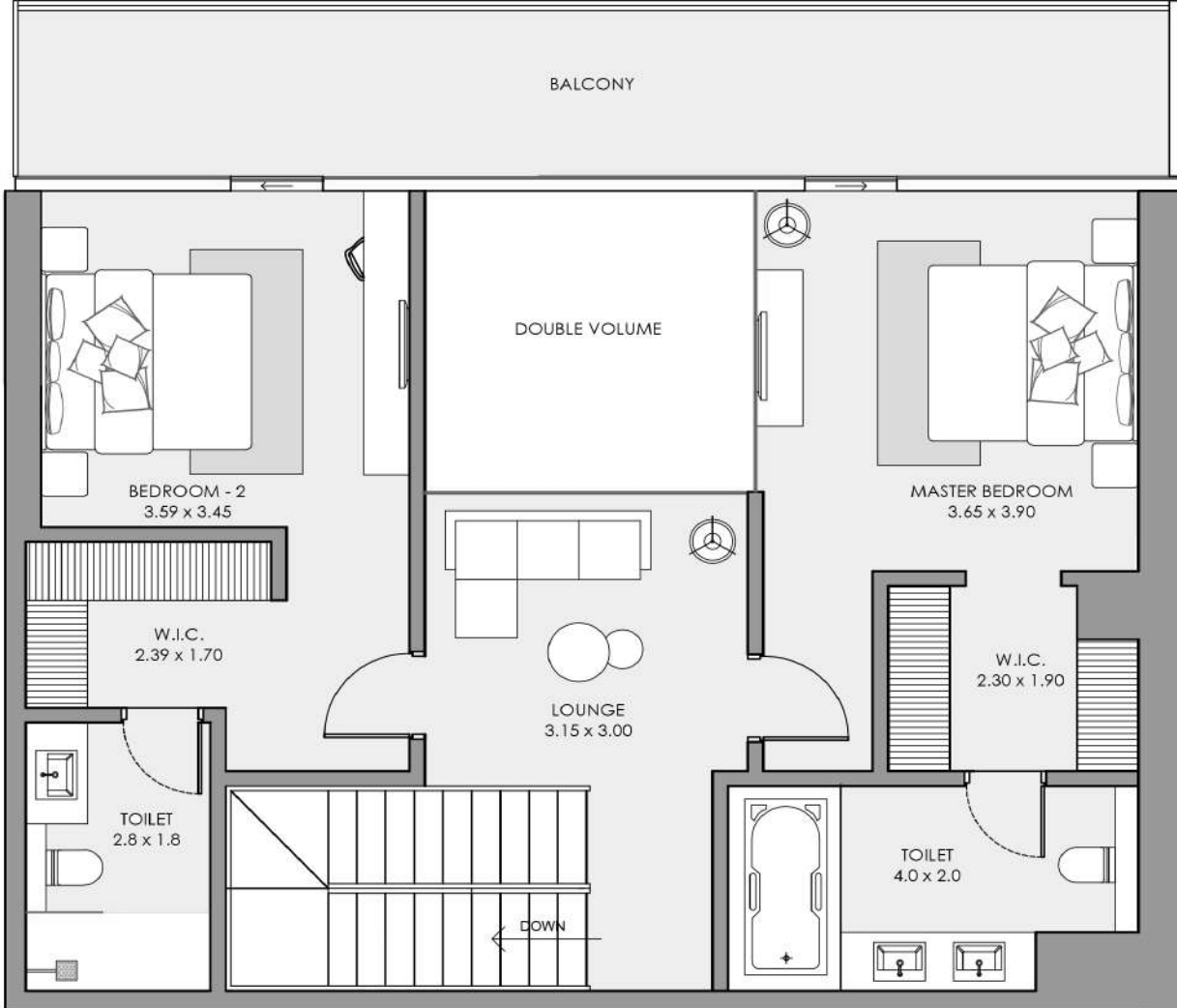
LOWER LEVEL

KEY PLAN



Sea View & Dubai Skyline
 Floors / 42nd to 45th

All pictures, plans, layouts, information, data and details included in this brochure are indicative only and may change at any time in accordance with the final designs of the project, regulatory approvals and planning permissions.



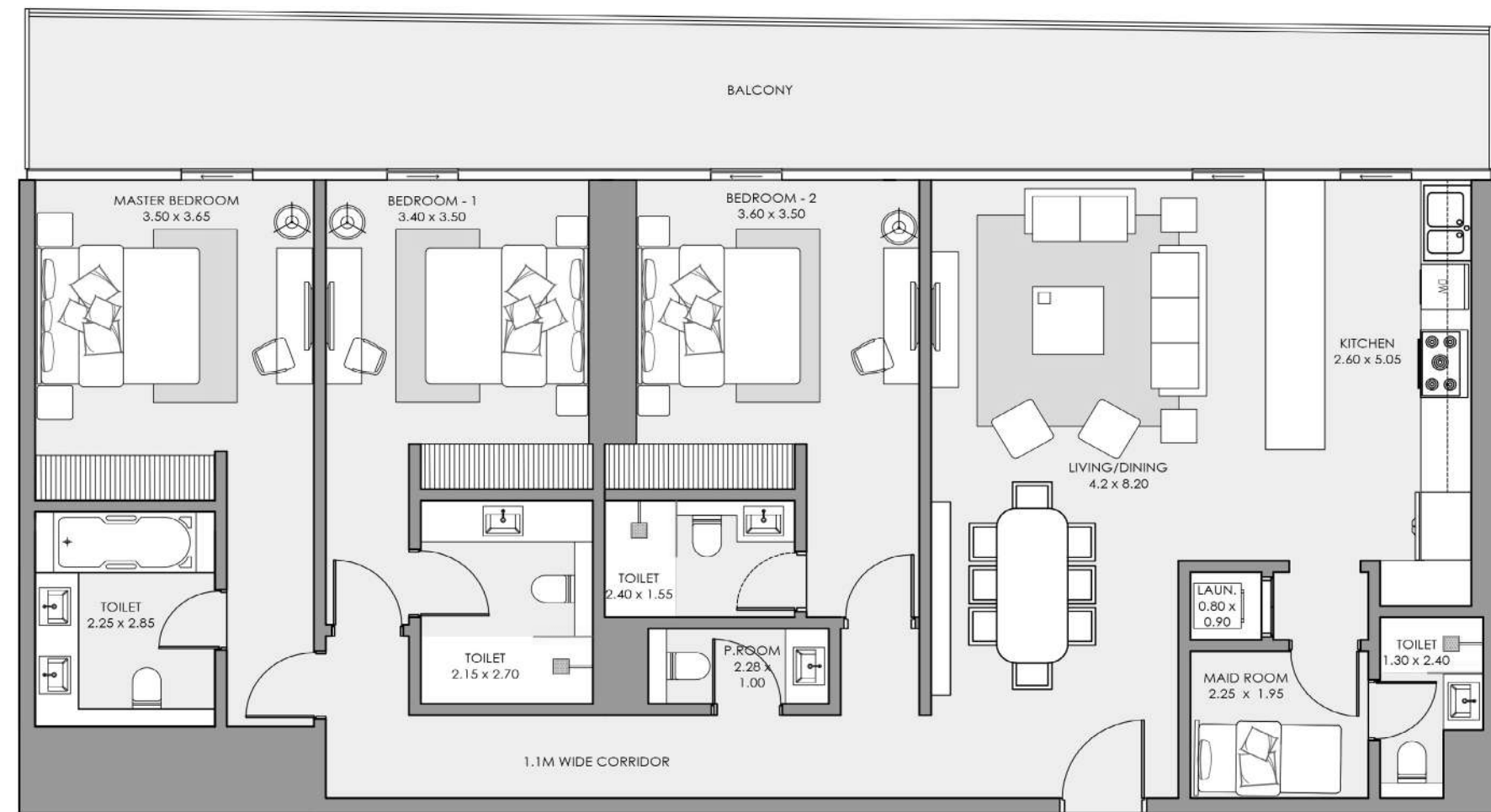
UPPER LEVEL

All pictures, plans, layouts, information, data and details included in this brochure are indicative only and may change at any time in accordance with the final designs of the project, regulatory approvals and planning permissions.

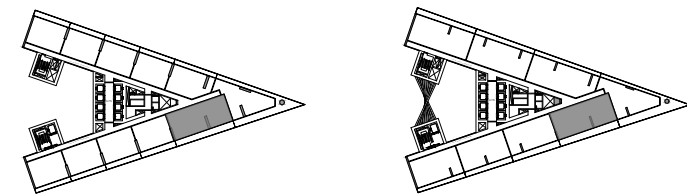
3 BEDROOM APARTMENT

TOTAL 1,971 SQFT / TYPE 3BR-01

INTERIOR AREA / 1,630 sq.ft.
BALCONY AREA / 341 sq.ft.
NET AREA / 1,971 sq.ft.



KEY PLAN



Sea View & Dubai Skyline
Floors / 26th to 37th

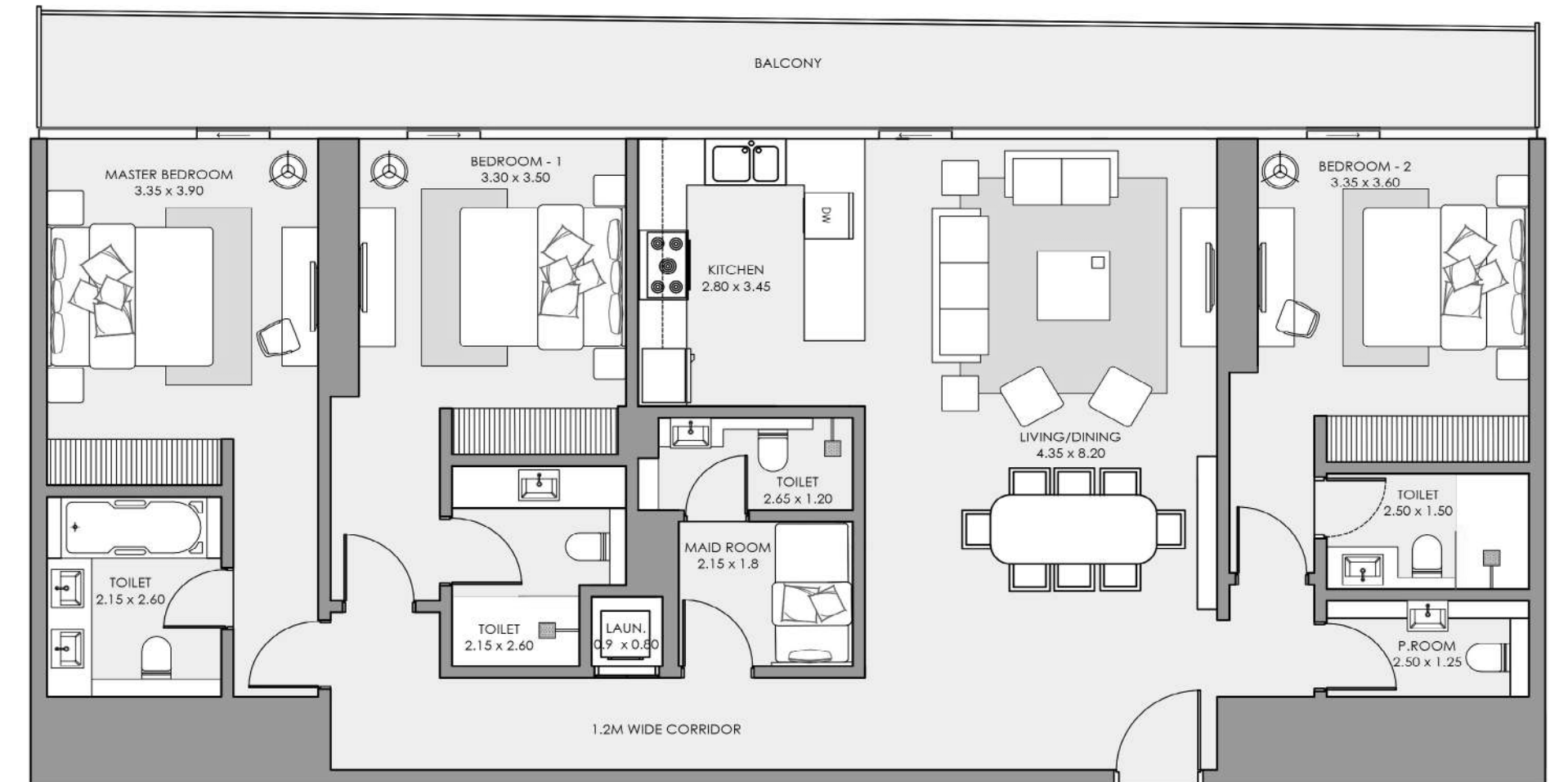
Sea View & Dubai Skyline
Floors / 38th to 41st

All pictures, plans, layouts, information, data and details included in this brochure are indicative only and may change at any time in accordance with the final designs of the project, regulatory approvals and planning permissions.

3 BEDROOM APARTMENT

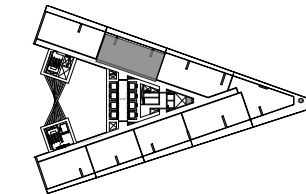
TOTAL 1,895 SQFT / TYPE 3BR-02

INTERIOR AREA / 1,595 sq.ft.
BALCONY AREA / 300 sq.ft.
NET AREA / 1,895 sq.ft.



KEY PLAN

Sea View



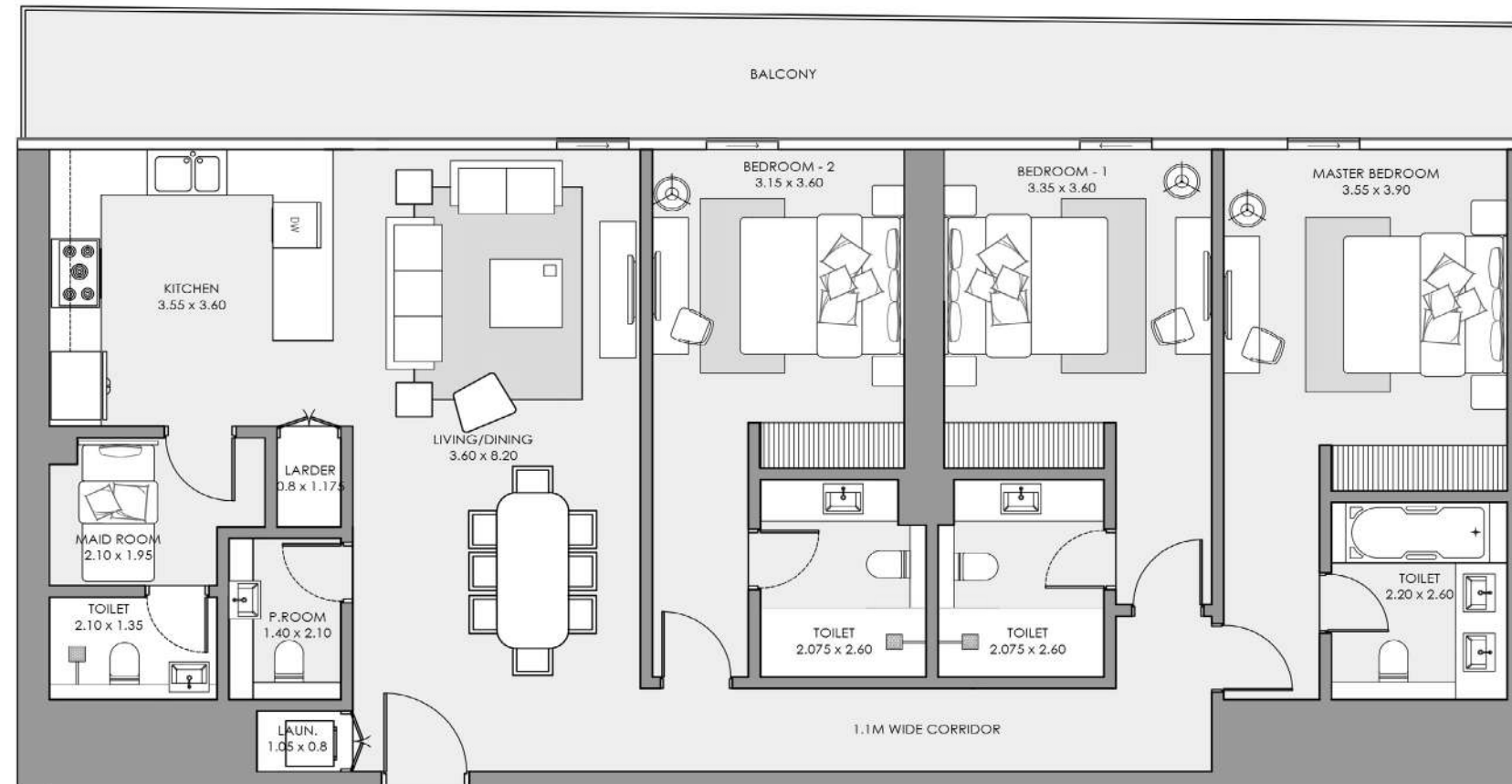
Floors / 38th to 41st

All pictures, plans, layouts, information, data and details included in this brochure are indicative only and may change at any time in accordance with the final designs of the project, regulatory approvals and planning permissions.

3 BEDROOM APARTMENT

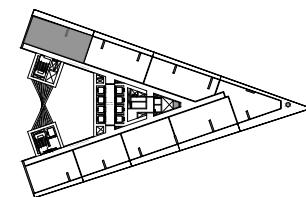
TOTAL 1,920 SQFT / TYPE 3BR-03

INTERIOR AREA / 1,615 sq.ft.
BALCONY AREA / 305 sq.ft.
NET AREA / 1,920 sq.ft.



KEY PLAN

Sea View



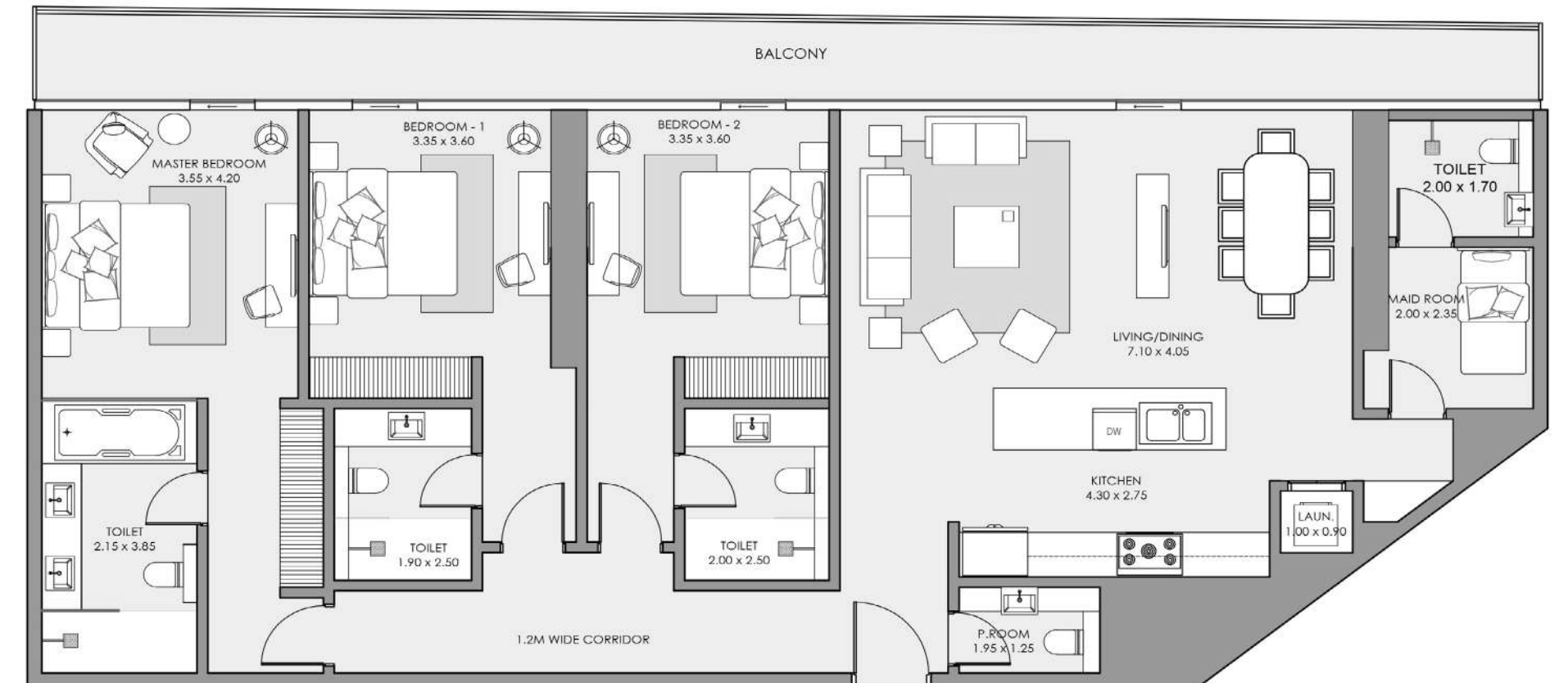
Floors / 38th to 41st

All pictures, plans, layouts, information, data and details included in this brochure are indicative only and may change at any time in accordance with the final designs of the project, regulatory approvals and planning permissions.

3 BEDROOM APARTMENT

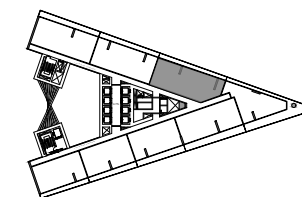
TOTAL 2,100 SQFT / TYPE 3BR-04

INTERIOR AREA / 1,765 sq.ft.
BALCONY AREA / 335 sq.ft.
NET AREA / 2,100 sq.ft.



KEY PLAN

Sea View



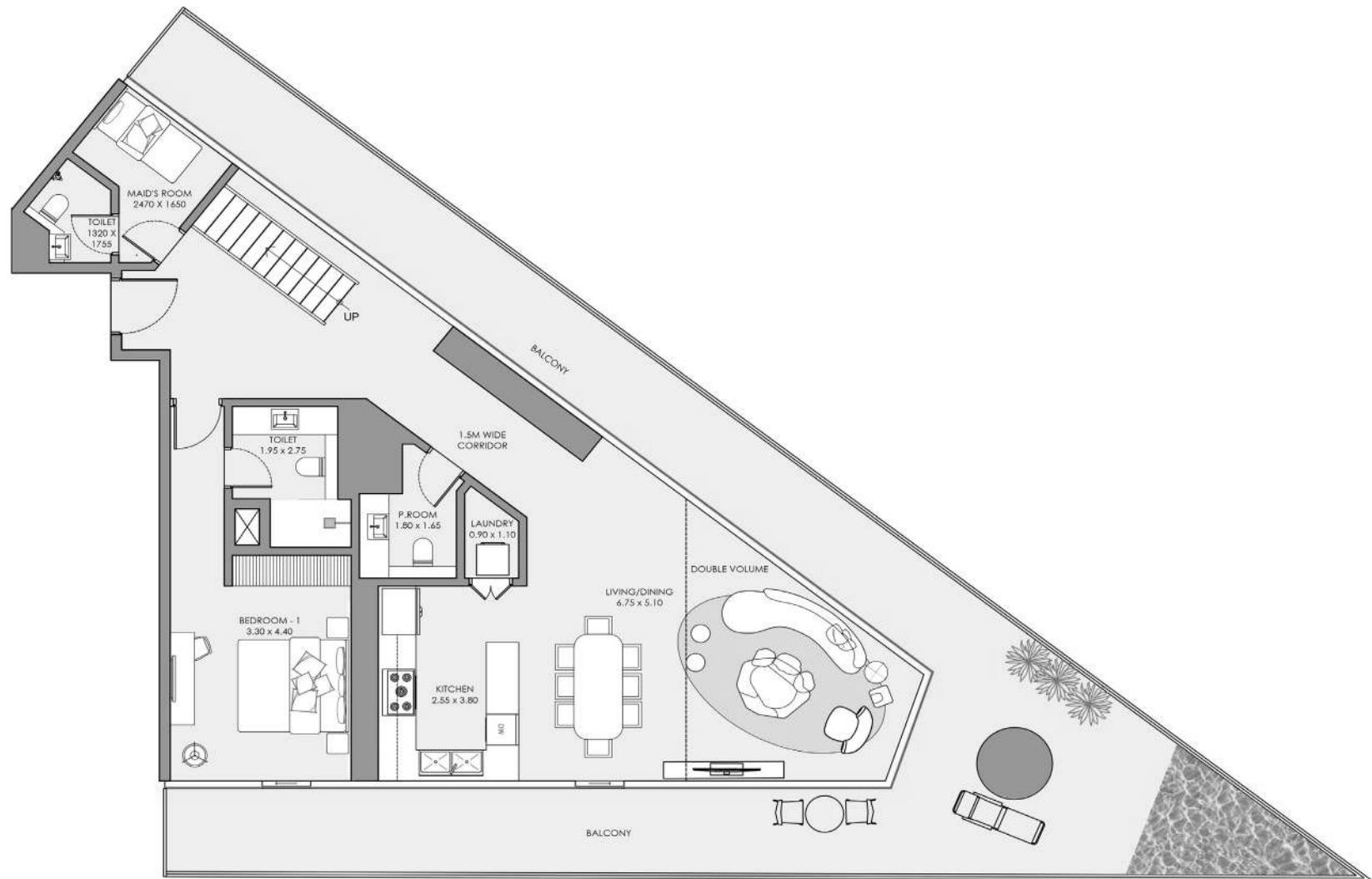
Floors / 38th to 41st

All pictures, plans, layouts, information, data and details included in this brochure are indicative only and may change at any time in accordance with the final designs of the project, regulatory approvals and planning permissions.

3 BEDROOM APARTMENT

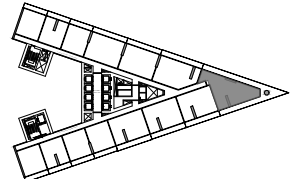
TOTAL 4,093 SQFT / TYPE ROYAL 3BR-01

INTERIOR AREA / 2,395 sq.ft.
 BALCONY AREA / 1,698 sq.ft.
 NET AREA / 4,093 sq.ft.



LOWER LEVEL

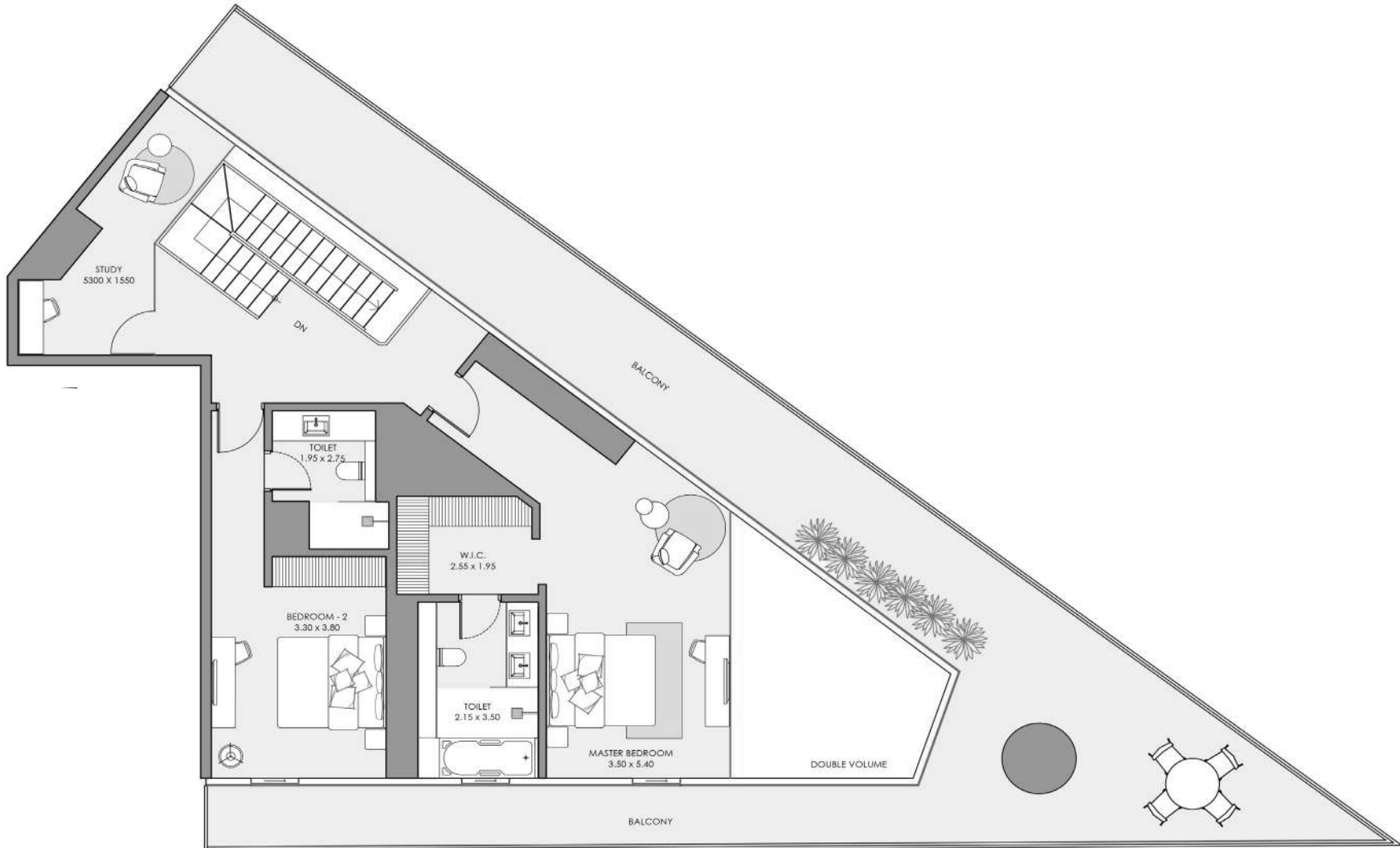
KEY PLAN



Panoramic Sea View

Floors / 11th to 19th

All pictures, plans, layouts, information, data and details included in this brochure are indicative only and may change at any time in accordance with the final designs of the project, regulatory approvals and planning permissions.



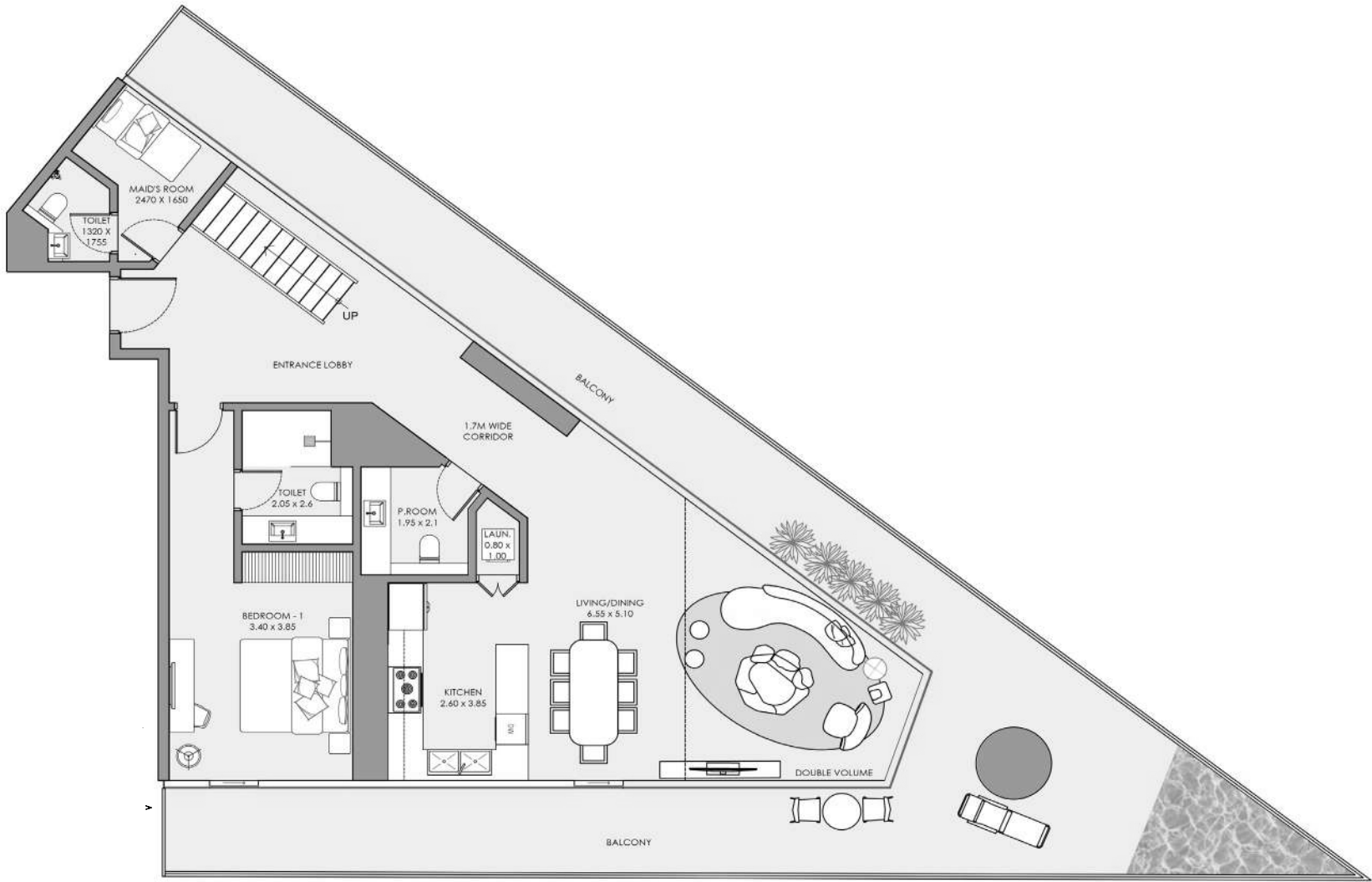
UPPER LEVEL

All pictures, plans, layouts, information, data and details included in this brochure are indicative only and may change at any time in accordance with the final designs of the project, regulatory approvals and planning permissions.

3 BEDROOM APARTMENT

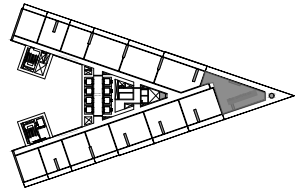
TOTAL 4,100 SQFT / TYPE ROYAL 3BR-02

INTERIOR AREA / 2,400 sq.ft.
 BALCONY AREA / 1,700 sq.ft.
 NET AREA / 4,100 sq.ft.



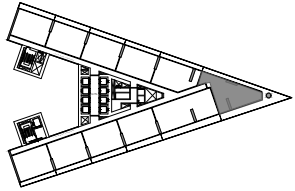
LOWER LEVEL

KEY PLAN



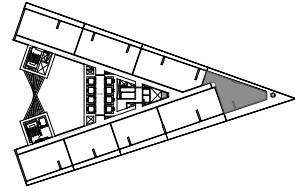
Panoramic Sea View

Floors / 20th to 25th



Panoramic Sea View

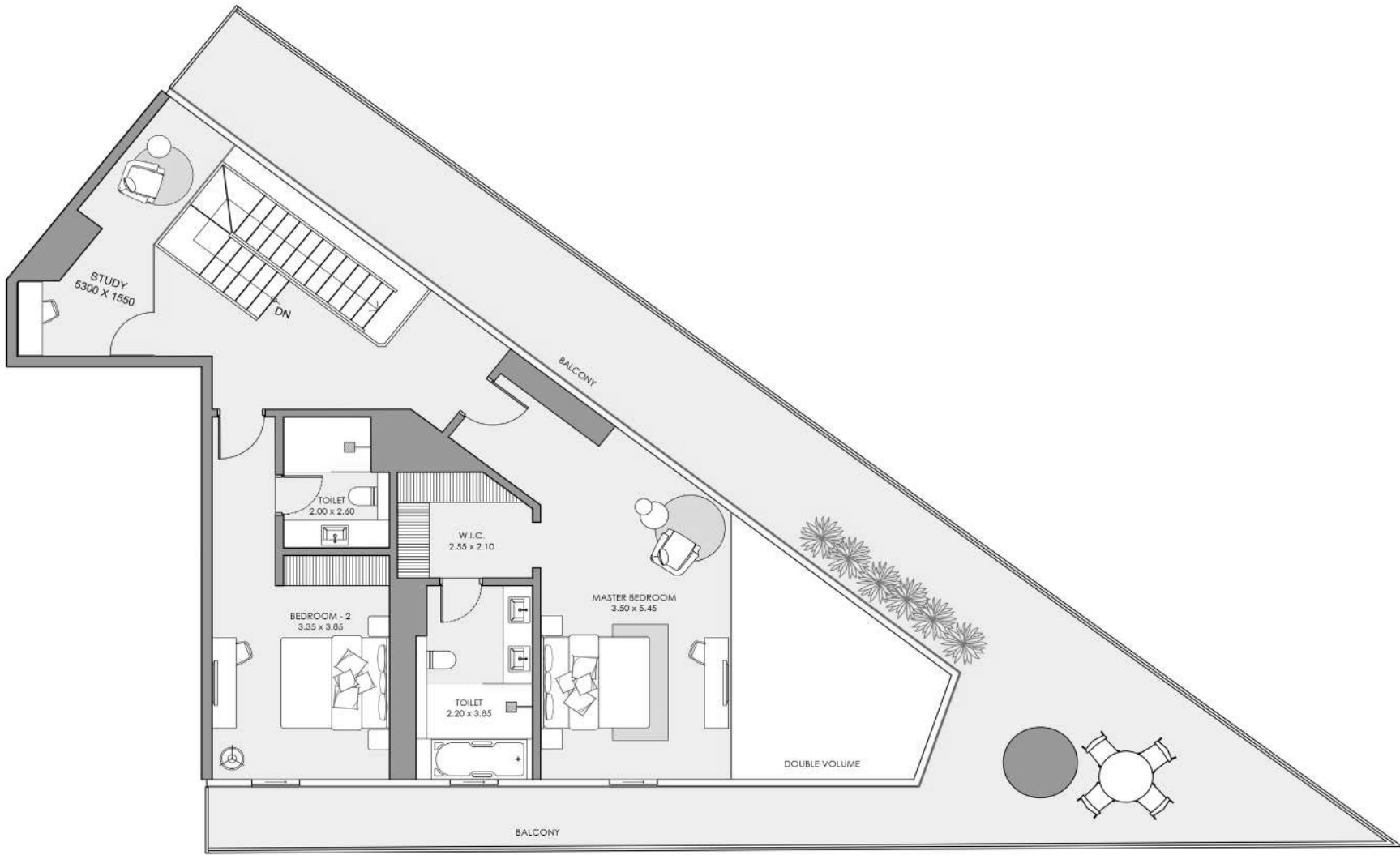
Floors / 26th to 37th



Panoramic Sea View

Floors / 38th to 41st

All pictures, plans, layouts, information, data and details included in this brochure are indicative only and may change at any time in accordance with the final designs of the project, regulatory approvals and planning permissions.



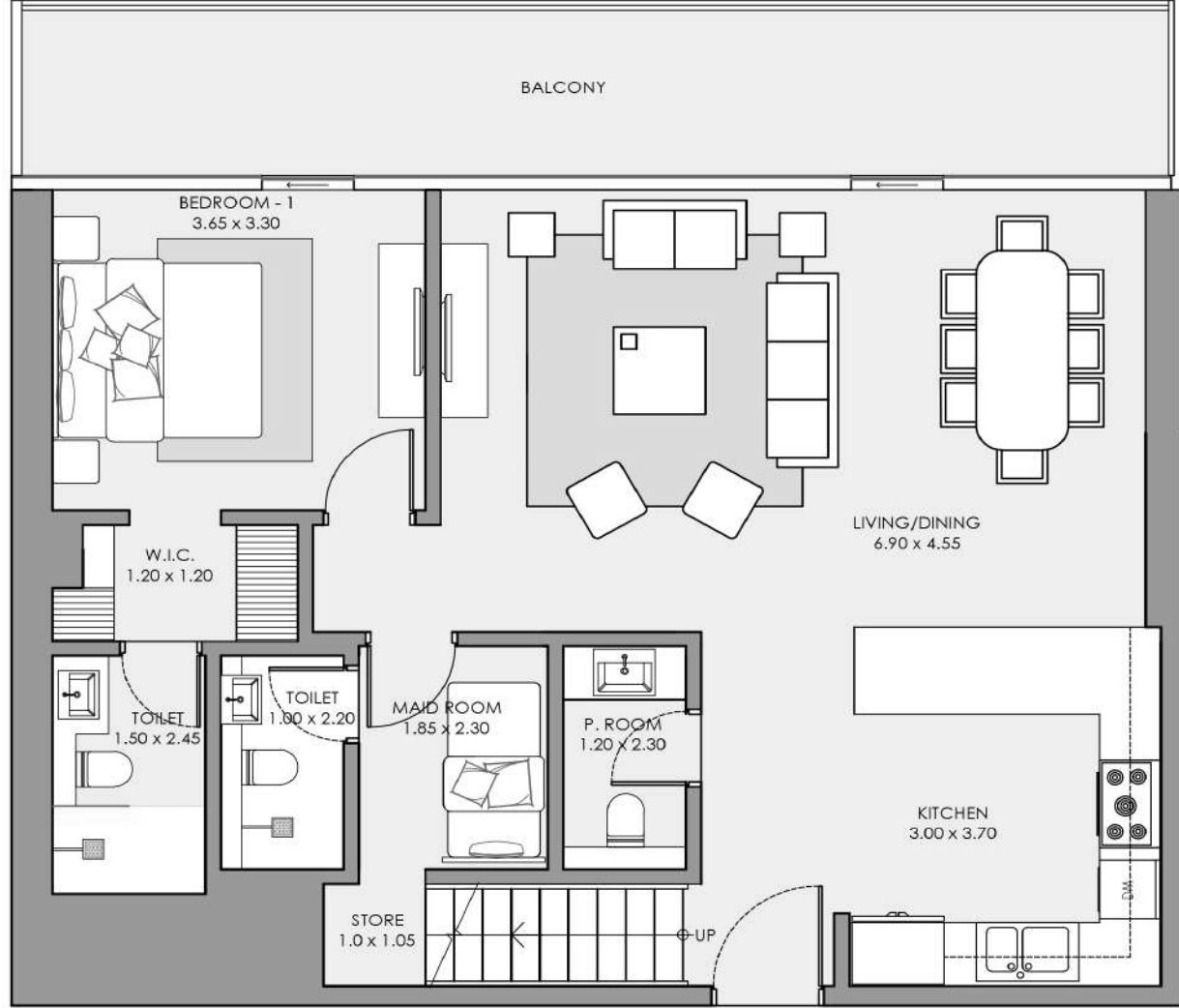
UPPER LEVEL

All pictures, plans, layouts, information, data and details included in this brochure are indicative only and may change at any time in accordance with the final designs of the project, regulatory approvals and planning permissions.

3 BEDROOM APARTMENT

TOTAL 2,295 SQFT / TYPE 3BR-DUPLEX

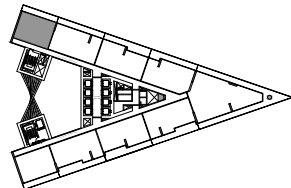
INTERIOR AREA / 1,970 sq.ft.
 BALCONY AREA / 325 sq.ft.
 NET AREA / 2,295 sq.ft.



LOWER LEVEL

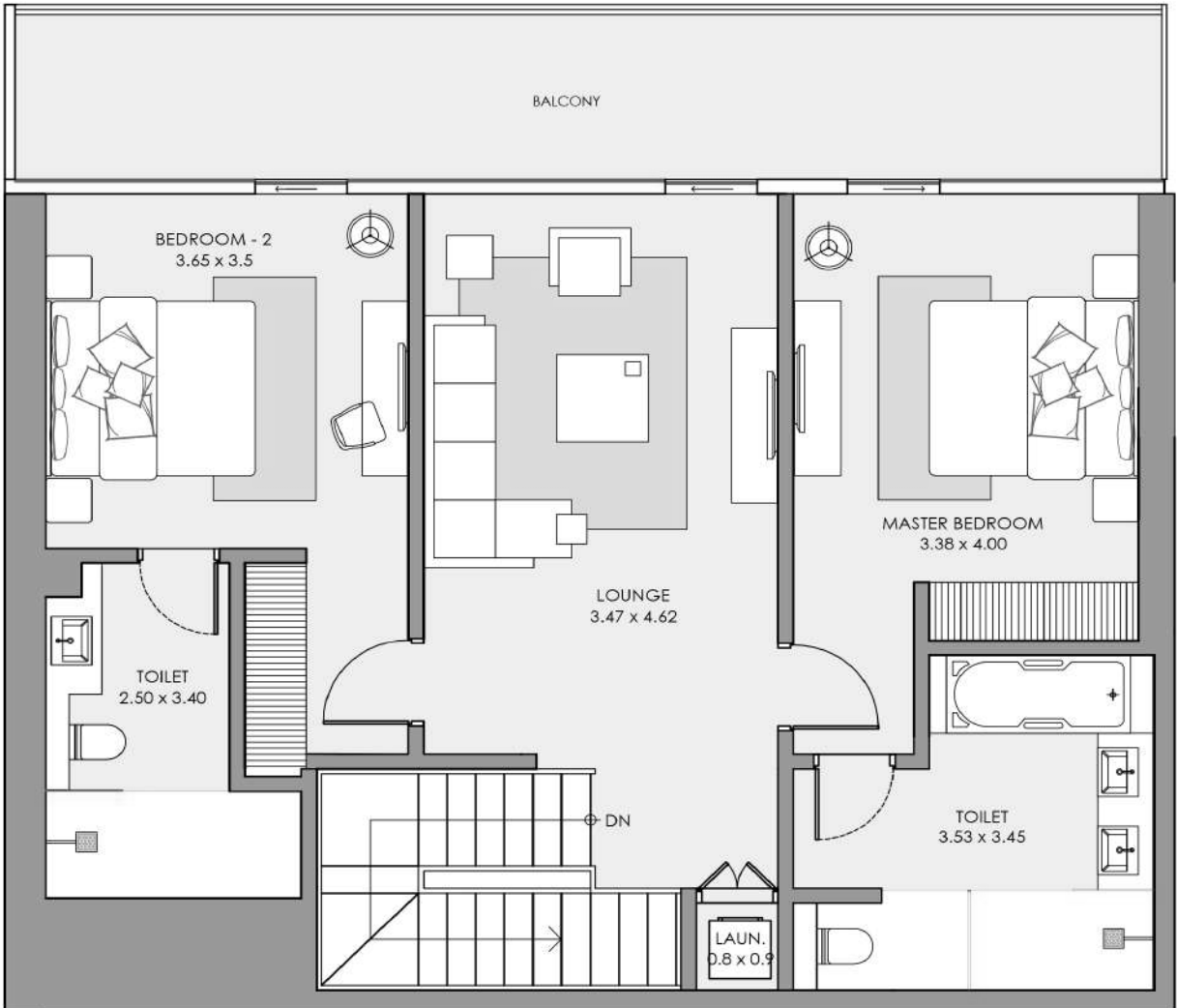
KEY PLAN

Sea View



Floors / 42nd to 45th

All pictures, plans, layouts, information, data and details included in this brochure are indicative only and may change at any time in accordance with the final designs of the project, regulatory approvals and planning permissions.



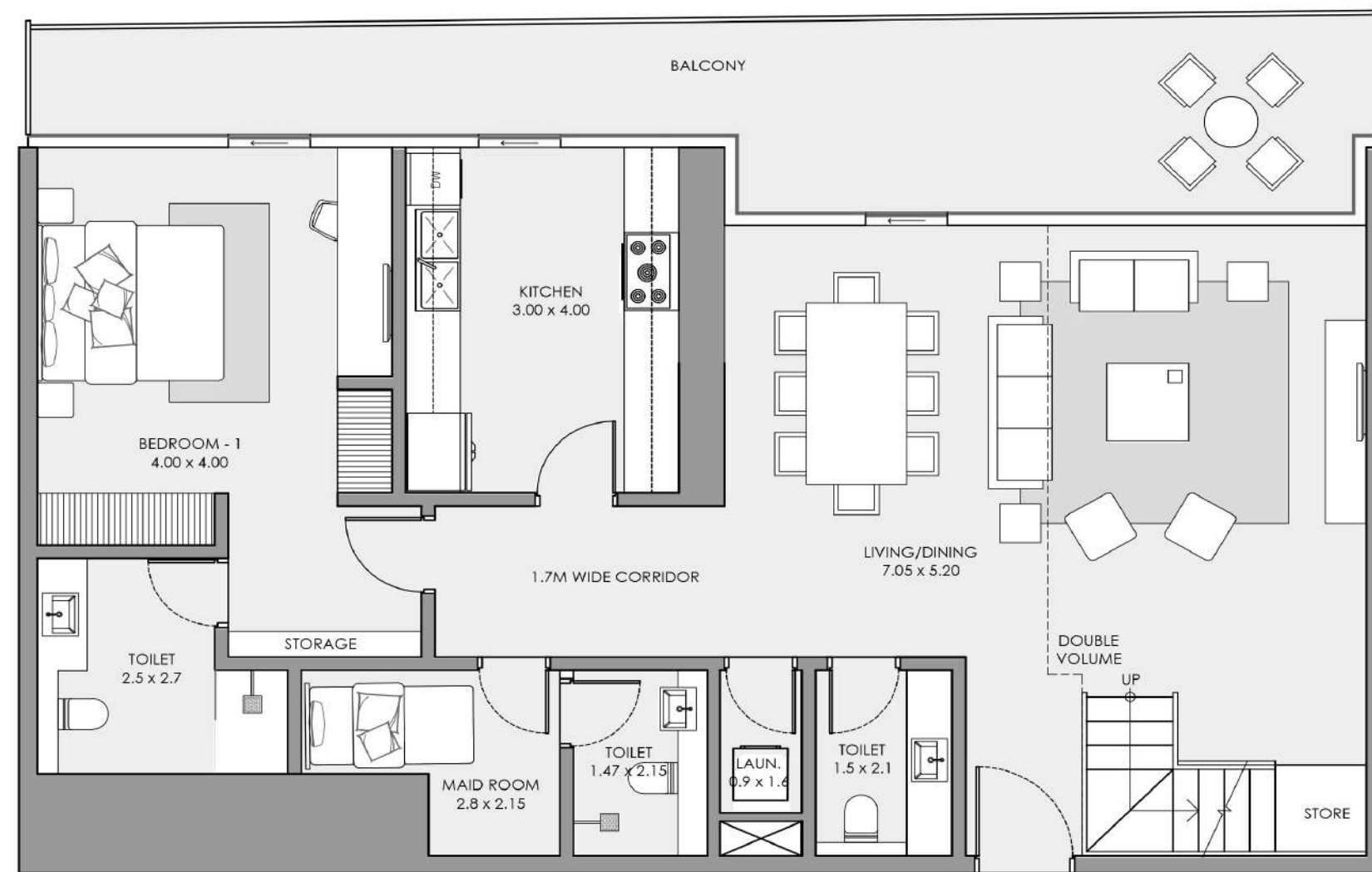
UPPER LEVEL

All pictures, plans, layouts, information, data and details included in this brochure are indicative only and may change at any time in accordance with the final designs of the project, regulatory approvals and planning permissions.

3 BEDROOM PENTHOUSE

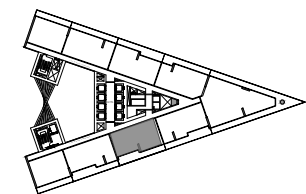
TOTAL 2,840 SQFT / TYPE PH-02A

INTERIOR AREA / 2,290 sq.ft.
BALCONY AREA / 550 sq.ft.
NET AREA / 2,840 sq.ft.



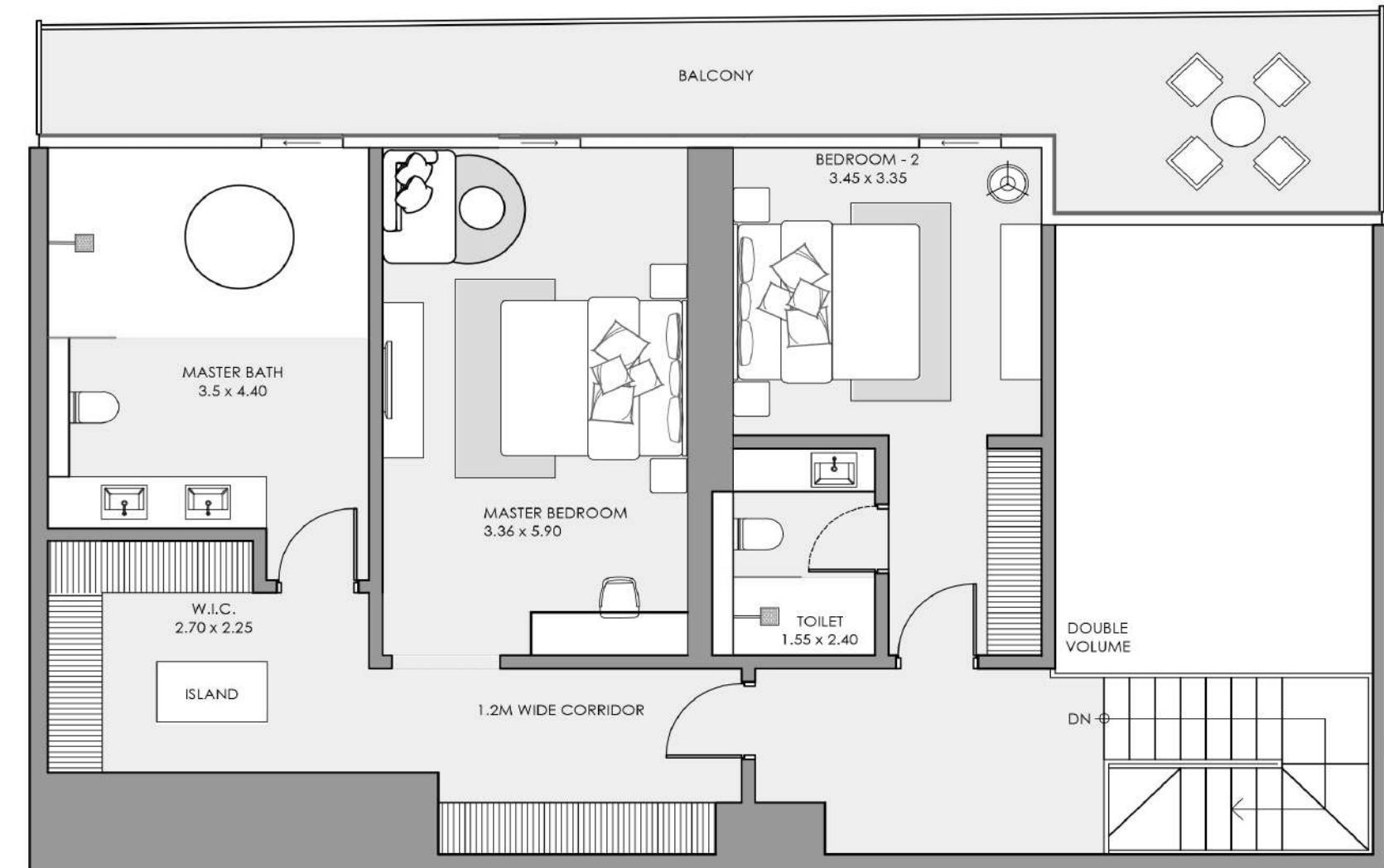
LOWER LEVEL

KEY PLAN



Sea View & Dubai Skyline
Floors / 42nd to 45th

All pictures, plans, layouts, information, data and details included in this brochure are indicative only and may change at any time in accordance with the final designs of the project, regulatory approvals and planning permissions.



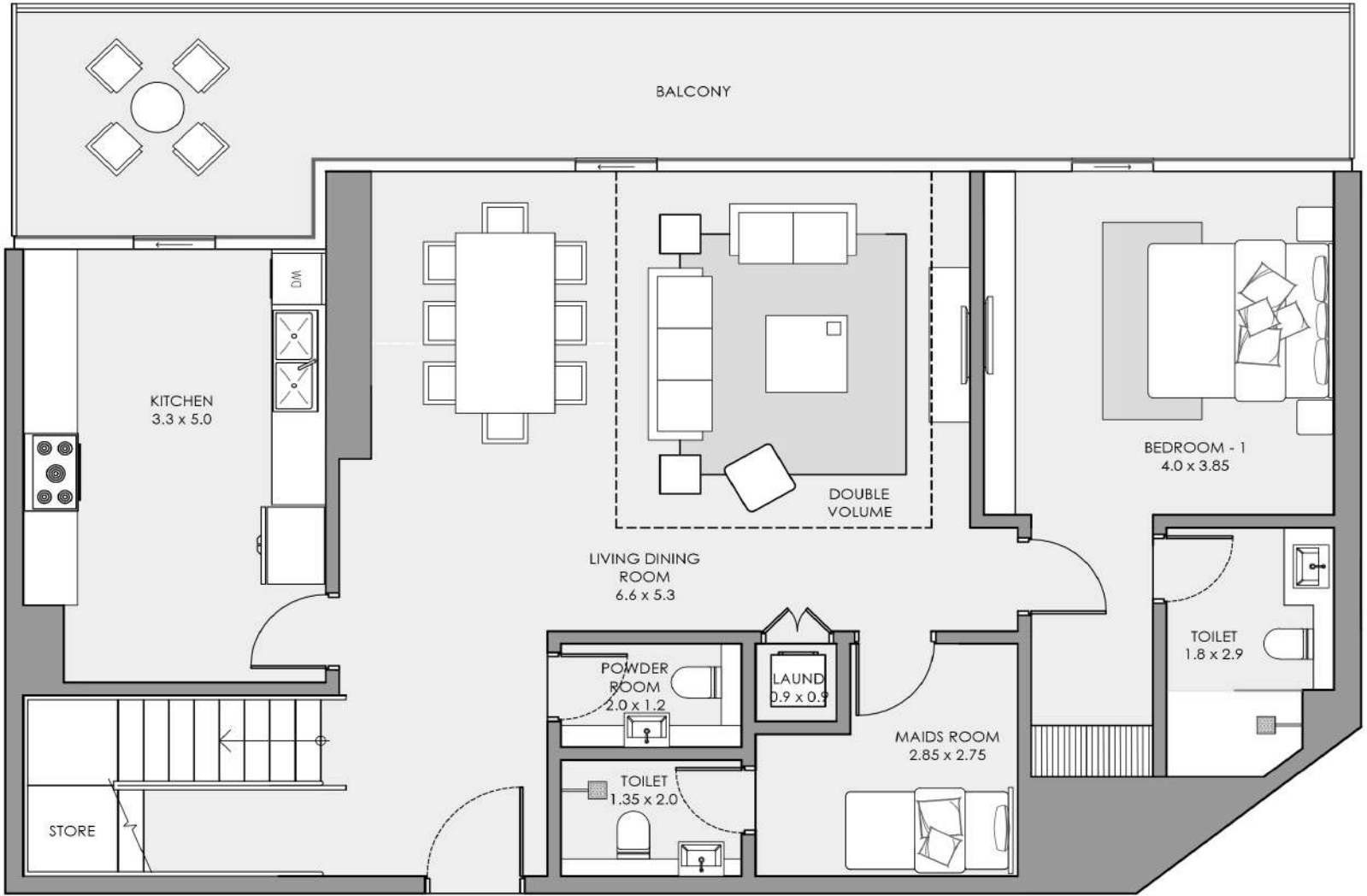
UPPER LEVEL

All pictures, plans, layouts, information, data and details included in this brochure are indicative only and may change at any time in accordance with the final designs of the project, regulatory approvals and planning permissions.

3 BEDROOM PENTHOUSE

TOTAL 3,035 SQFT / TYPE PH-03

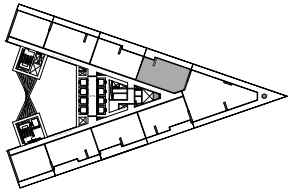
INTERIOR AREA / 2,370 sq.ft.
 BALCONY AREA / 665 sq.ft.
 NET AREA / 3,035 sq.ft.



LOWER LEVEL

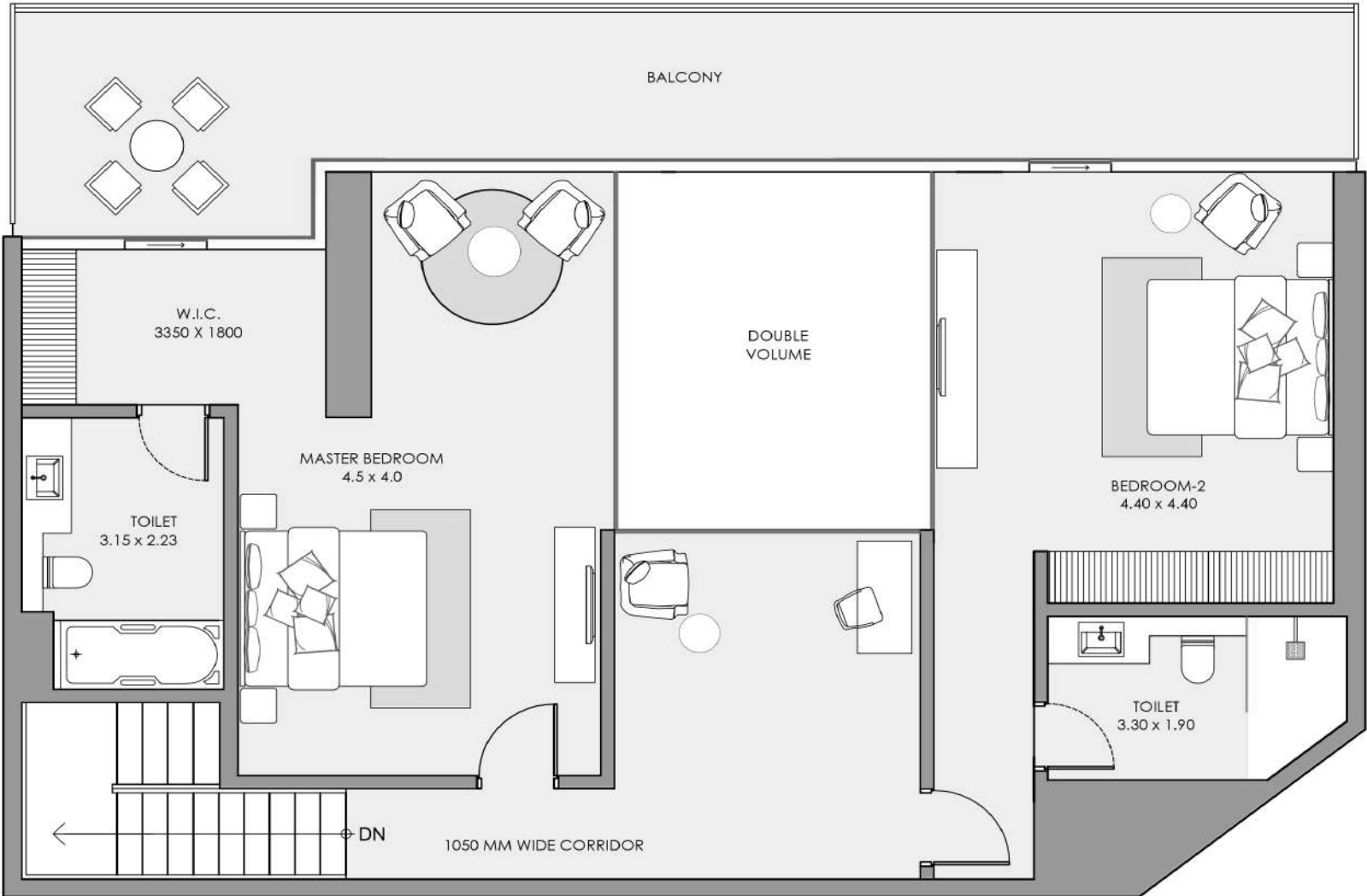
KEY PLAN

Sea View



Floors / 42nd to 45th

All pictures, plans, layouts, information, data and details included in this brochure are indicative only and may change at any time in accordance with the final designs of the project, regulatory approvals and planning permissions.



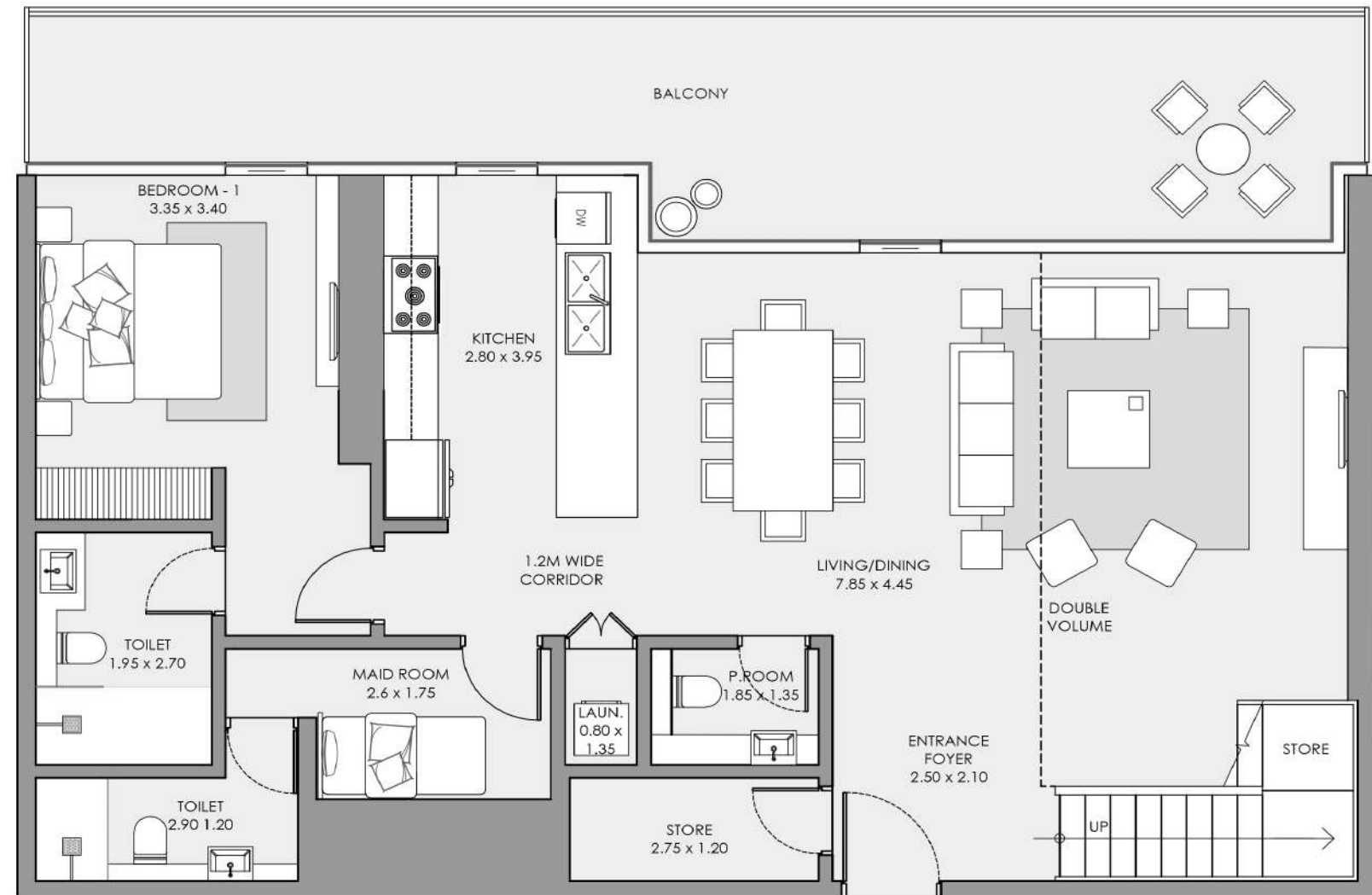
UPPER LEVEL

All pictures, plans, layouts, information, data and details included in this brochure are indicative only and may change at any time in accordance with the final designs of the project, regulatory approvals and planning permissions.

3 BEDROOM PENTHOUSE

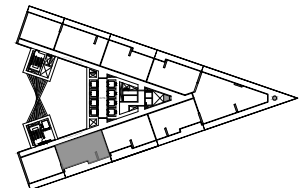
TOTAL 2,915 SQFT / TYPE PH-04

INTERIOR AREA / 2,330 sq.ft.
BALCONY AREA / 585 sq.ft.
NET AREA / 2,915 sq.ft.



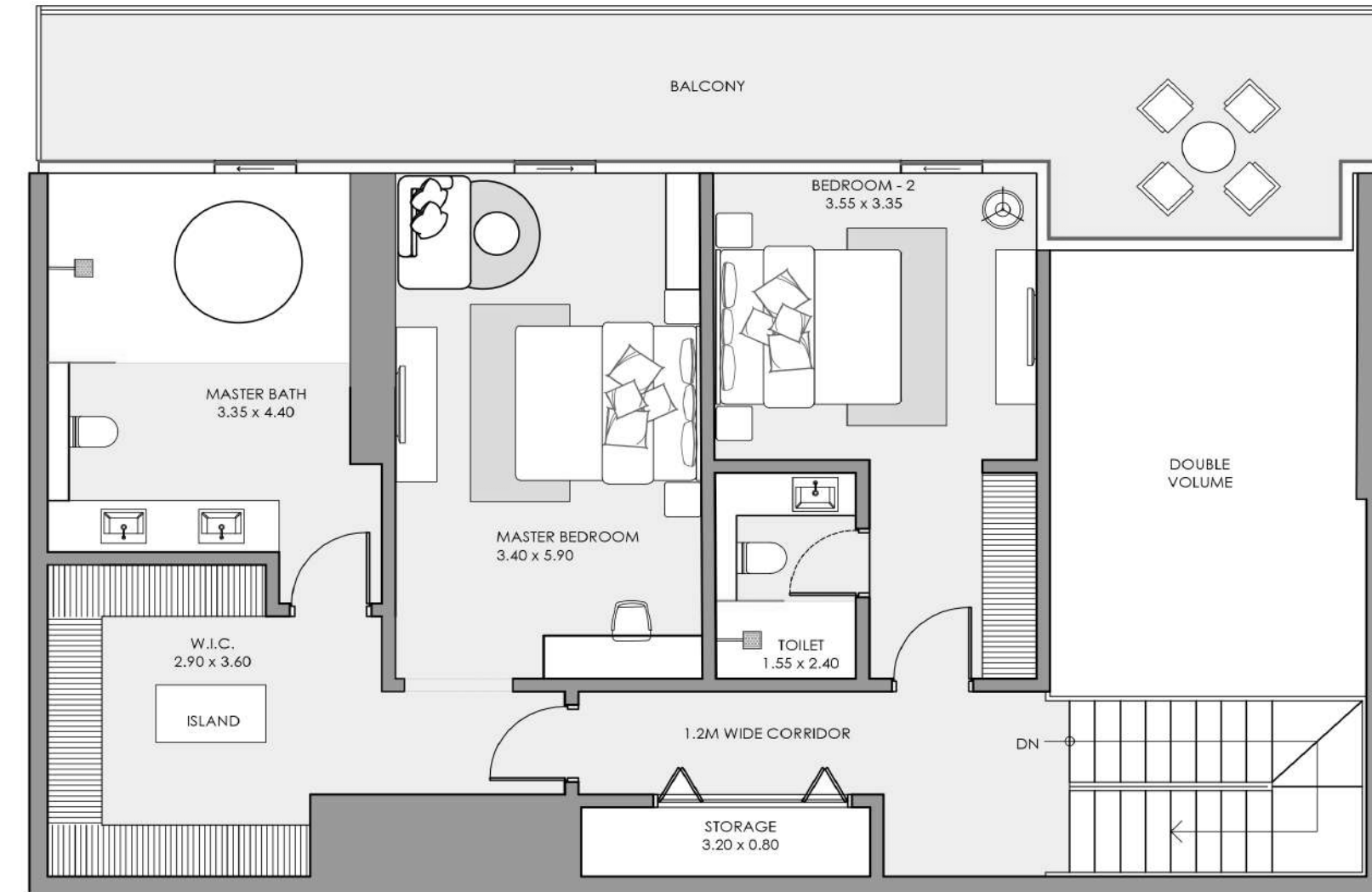
LOWER LEVEL

KEY PLAN



Sea View & Dubai Skyline
Floors / 42nd to 45th

All pictures, plans, layouts, information, data and details included in this brochure are indicative only and may change at any time in accordance with the final designs of the project, regulatory approvals and planning permissions.



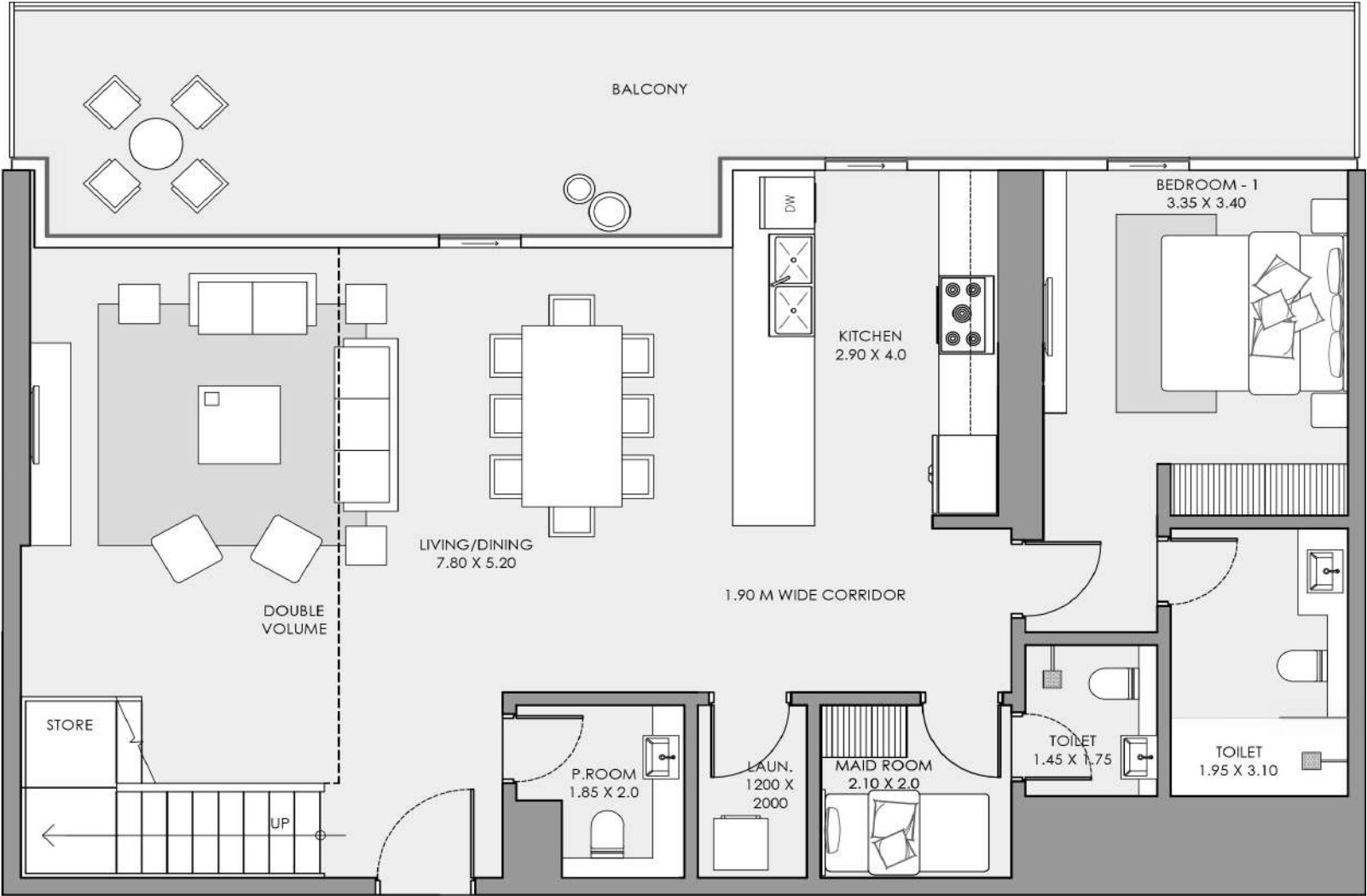
UPPER LEVEL

All pictures, plans, layouts, information, data and details included in this brochure are indicative only and may change at any time in accordance with the final designs of the project, regulatory approvals and planning permissions.

3 BEDROOM PENTHOUSE

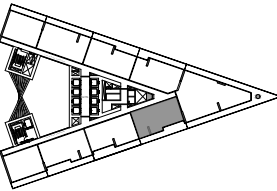
TOTAL 2,825 SQFT / TYPE PH-04A

INTERIOR AREA / 2,300 sq.ft.
 BALCONY AREA / 525 sq.ft.
 NET AREA / 2,825 sq.ft.



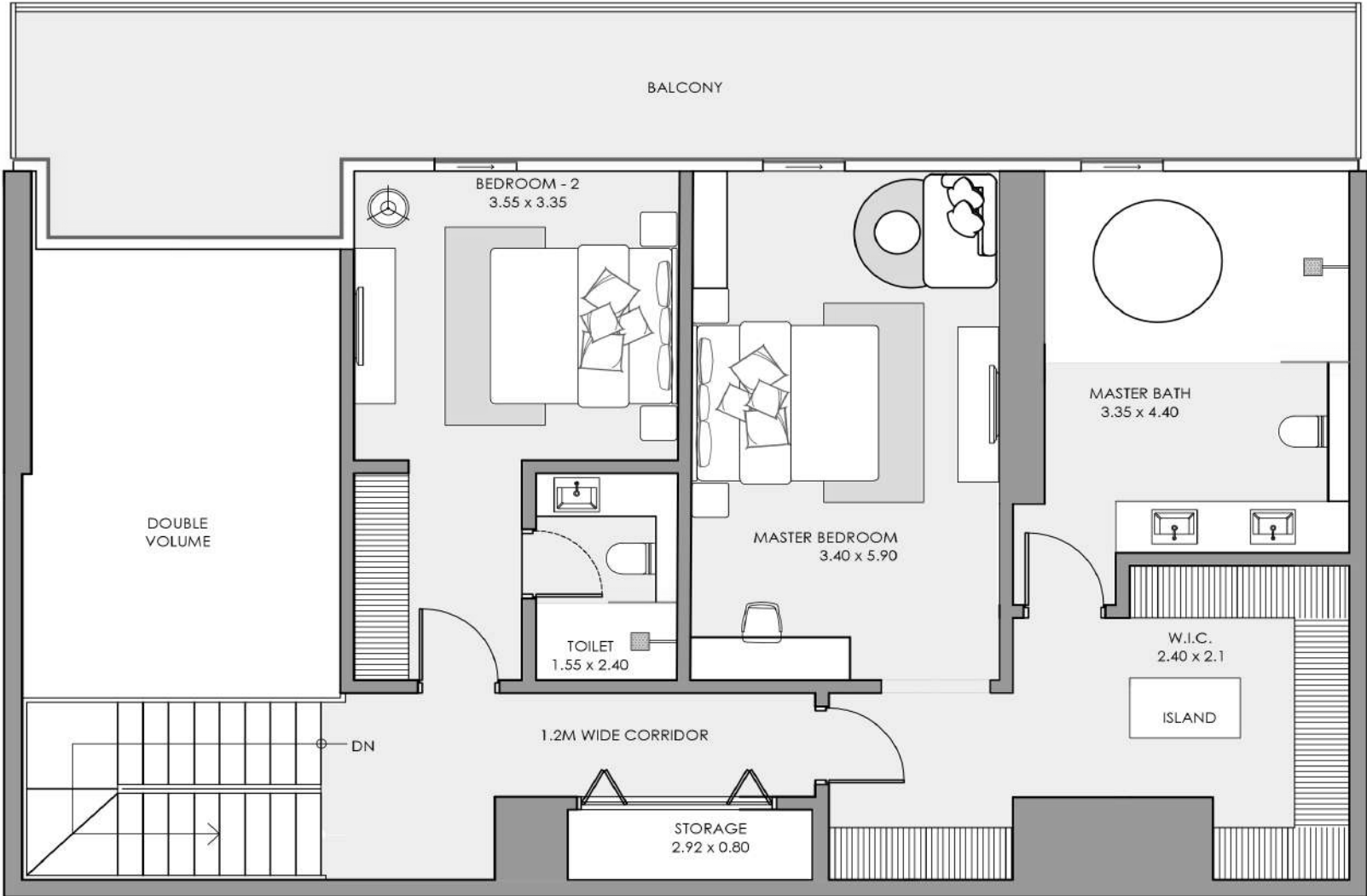
LOWER LEVEL

KEY PLAN



Sea View & Dubai Skyline
 Floors / 42nd to 45th

All pictures, plans, layouts, information, data and details included in this brochure are indicative only and may change at any time in accordance with the final designs of the project, regulatory approvals and planning permissions.



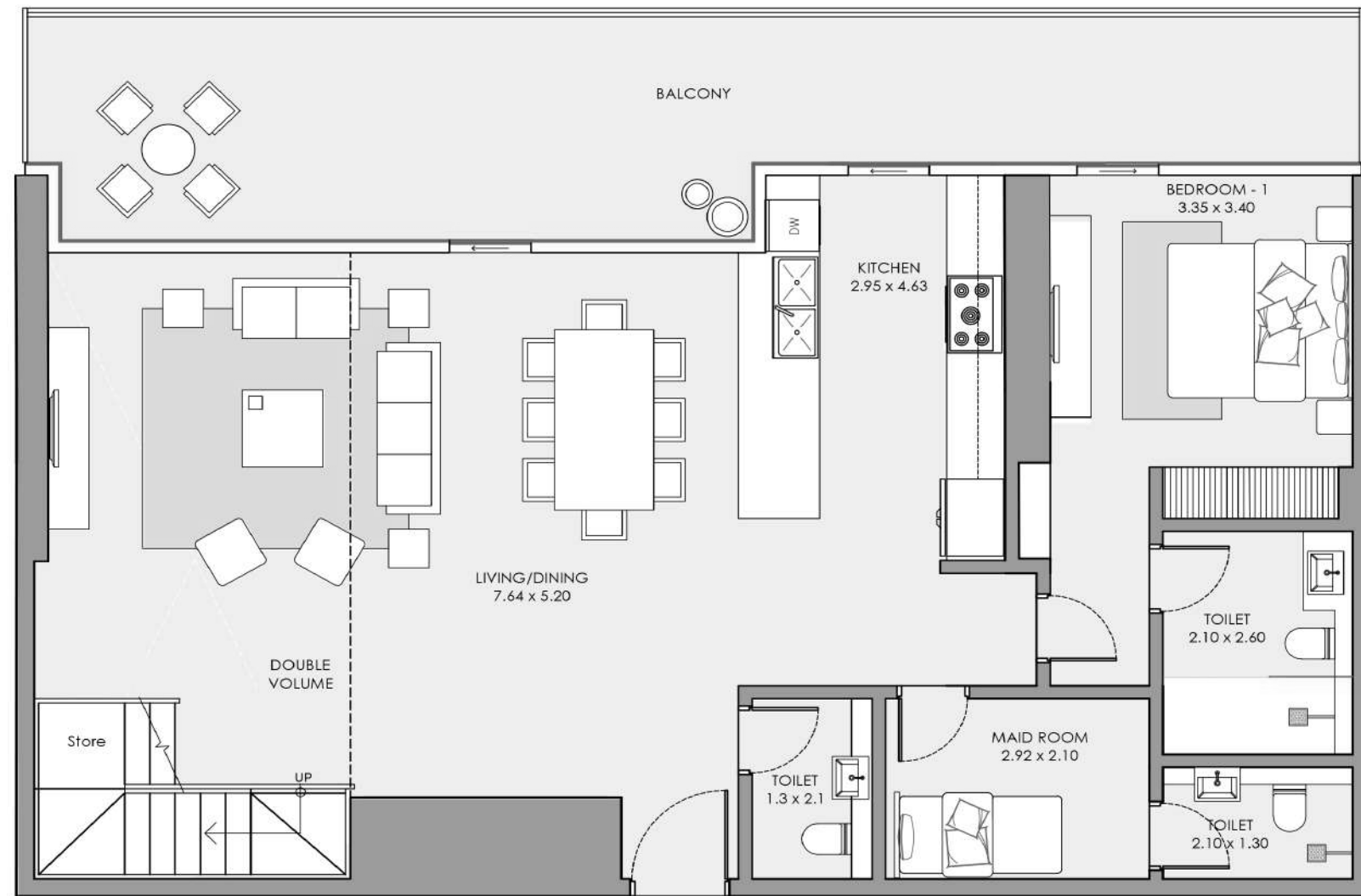
UPPER LEVEL

All pictures, plans, layouts, information, data and details included in this brochure are indicative only and may change at any time in accordance with the final designs of the project, regulatory approvals and planning permissions.

4 BEDROOM PENTHOUSE

TOTAL 2,910 SQFT / TYPE PH-01

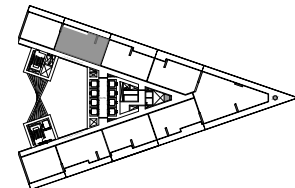
INTERIOR AREA / 2,330 sq.ft.
BALCONY AREA / 580 sq.ft.
NET AREA / 2,910 sq.ft.



LOWER LEVEL

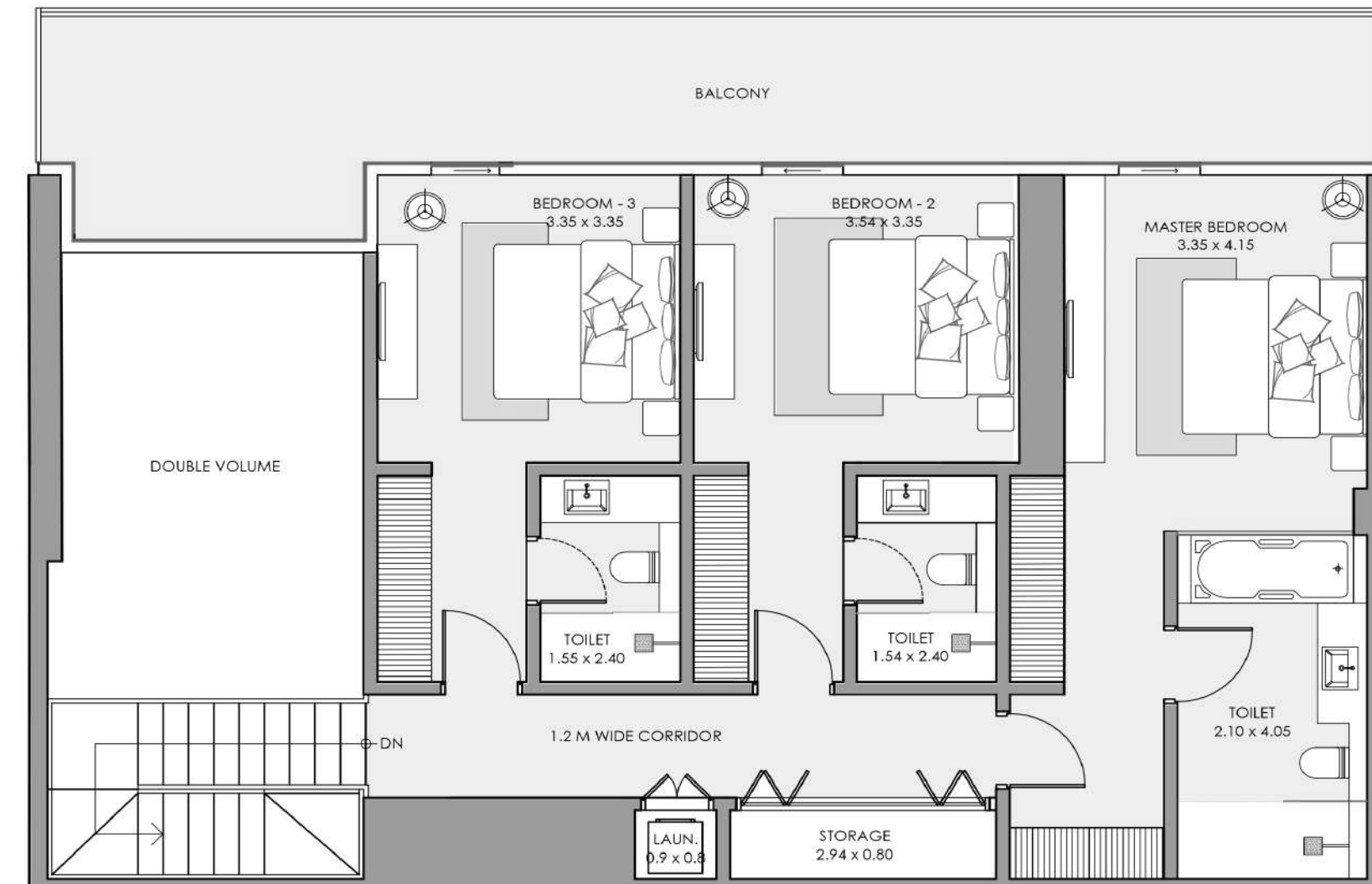
KEY PLAN

Sea View



Floors / 42nd to 45th

All pictures, plans, layouts, information, data and details included in this brochure are indicative only and may change at any time in accordance with the final designs of the project, regulatory approvals and planning permissions.



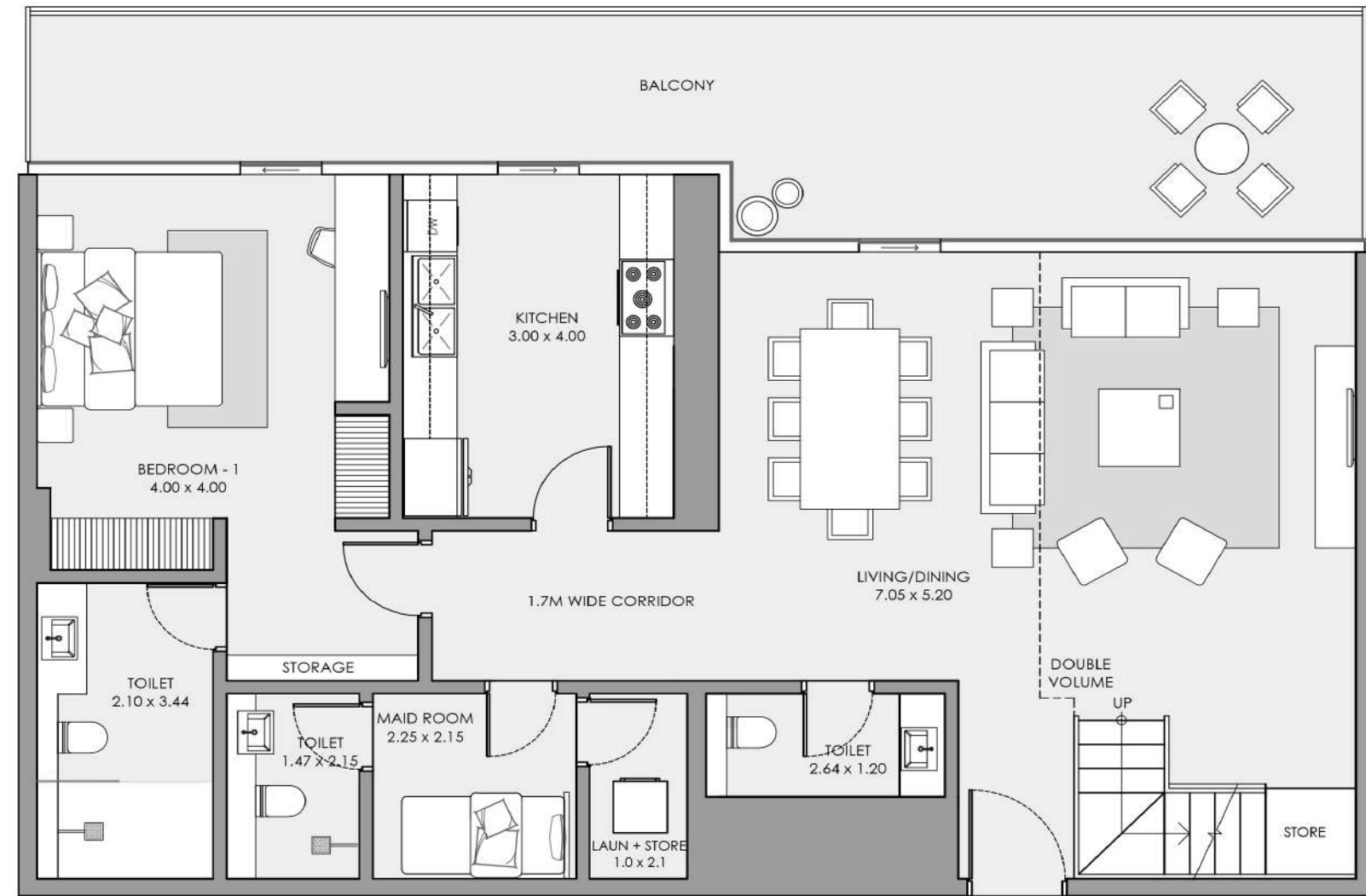
UPPER LEVEL

All pictures, plans, layouts, information, data and details included in this brochure are indicative only and may change at any time in accordance with the final designs of the project, regulatory approvals and planning permissions.

4 BEDROOM PENTHOUSE

TOTAL 2,975 SQFT / TYPE PH-02

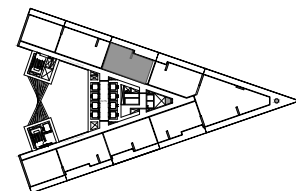
INTERIOR AREA / 2,330 sq.ft.
BALCONY AREA / 645 sq.ft.
NET AREA / 2,975 sq.ft.



LOWER LEVEL

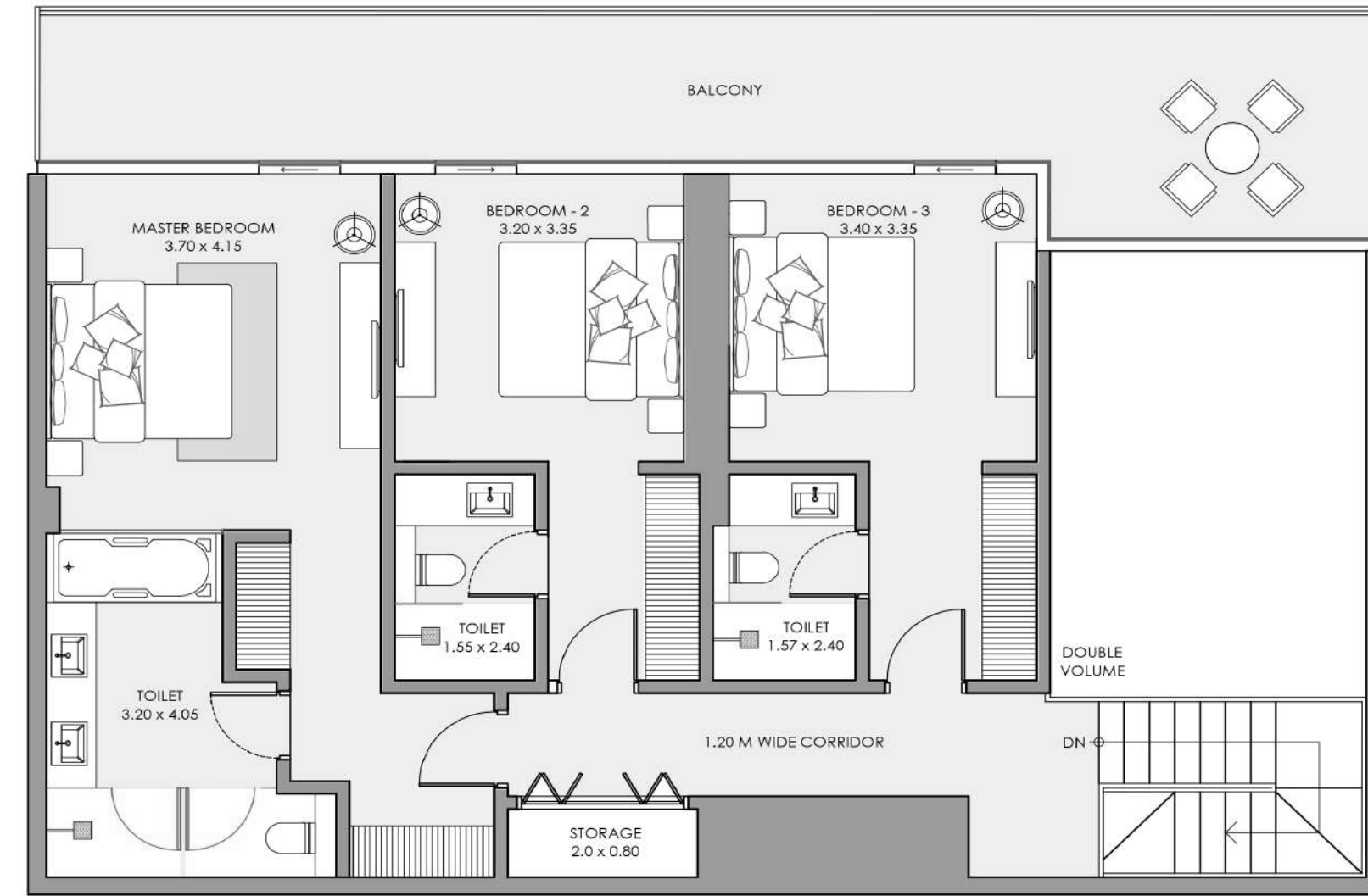
KEY PLAN

Sea View



Floors / 42nd to 45th

All pictures, plans, layouts, information, data and details included in this brochure are indicative only and may change at any time in accordance with the final designs of the project, regulatory approvals and planning permissions.



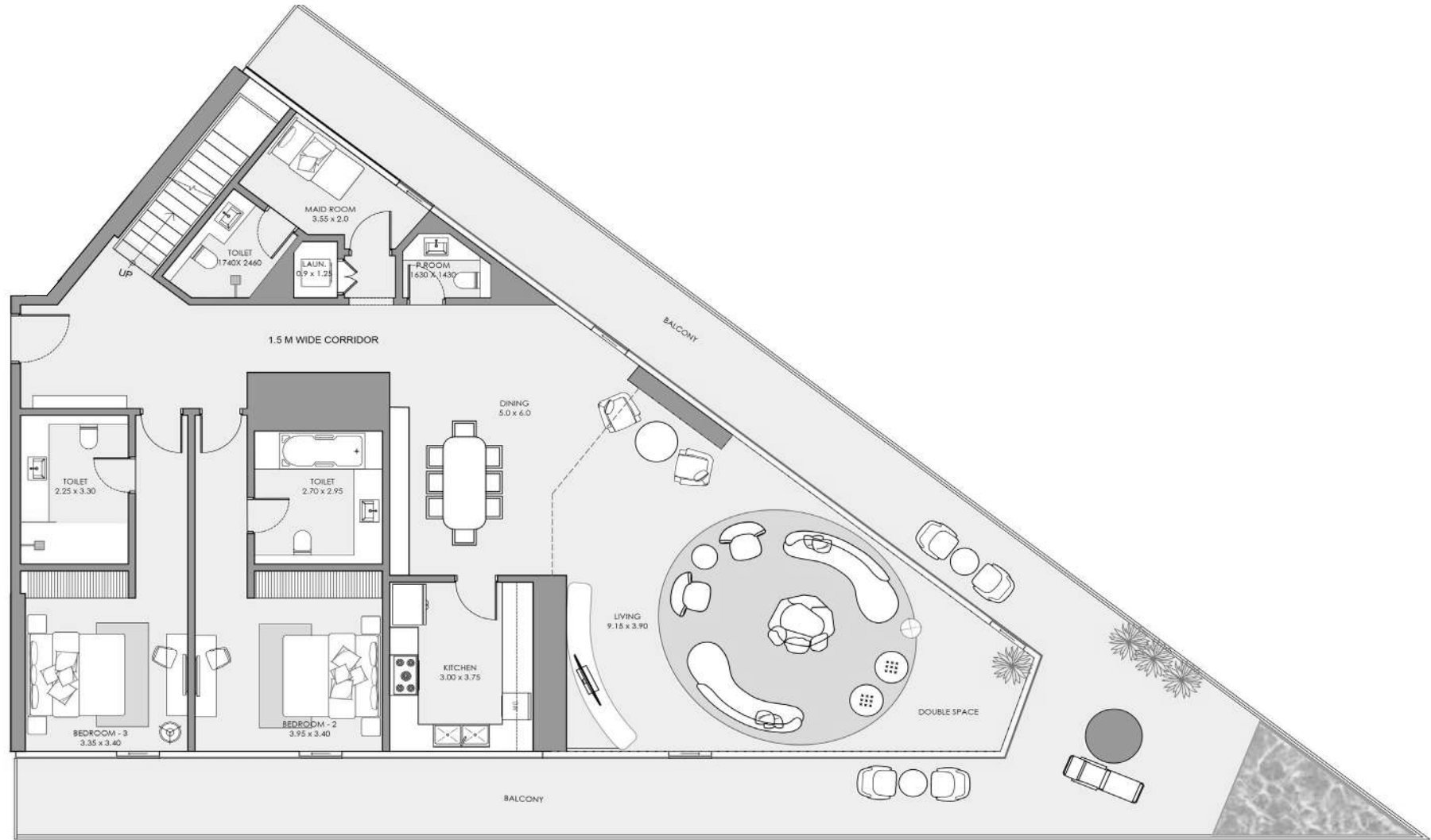
UPPER LEVEL

All pictures, plans, layouts, information, data and details included in this brochure are indicative only and may change at any time in accordance with the final designs of the project, regulatory approvals and planning permissions.

4 BEDROOM PENTHOUSE

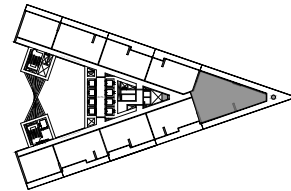
TOTAL 5,830 SQFT / TYPE ROYAL PENTHOUSE

INTERIOR AREA / 3,780 sq.ft.
 BALCONY AREA / 2,050 sq.ft.
 NET AREA / 5,830 sq.ft.



LOWER LEVEL

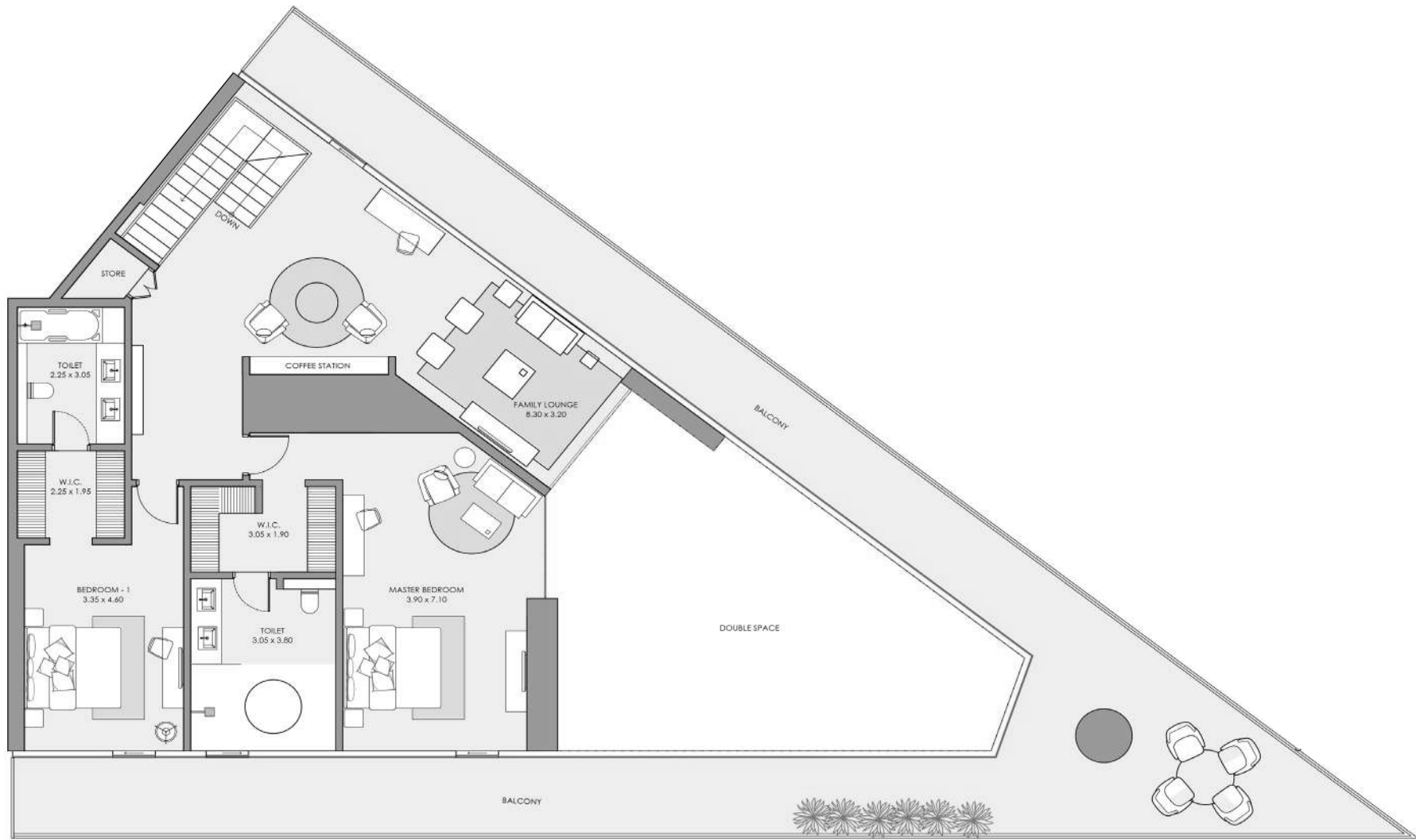
KEY PLAN



Panoramic Sea View

Floors / 42nd to 45th

All pictures, plans, layouts, information, data and details included in this brochure are indicative only and may change at any time in accordance with the final designs of the project, regulatory approvals and planning permissions.



UPPER LEVEL

All pictures, plans, layouts, information, data and details included in this brochure are indicative only and may change at any time in accordance with the final designs of the project, regulatory approvals and planning permissions.

