

**Reportage Group**



## Brand Identity

2024 has also been a defining year for the company. The Group has continued its expansion in over 15 markets and announced the launch of 10 new projects in UAE alone. Looking ahead, Reportage Group is poised to continue shaping the future of real estate development. Future projects will emphasize cutting-edge designs, state-of-the-art sustainability initiatives, and the creation of spaces that foster a deep sense of community. As a frontrunner in the UAE real estate sector, Reportage is setting the stage to redefine and reimagine urban living—not just within the UAE, but on a global scale. As a first milestone on this 100-mile journey, Reportage intends to launch its new signature line, the **R**.

***The new logo reflects the perfect marriage of boldness, sophistication, and beauty of an unmistakable hallmark of upscale signature living.***



# Unit Types



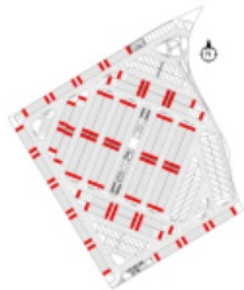
Ground Floor



First Floor



Second Floor



## THREE BEDROOM TOWNHOUSE - TYPE A

Internal Area	1327 sq.ft
Outdoor Area (Balconies, Backyard, Frontyard)	962.7 sq.ft
<b>Total Saleable Area</b>	<b>2290.5 sq.ft</b>

# Unit Types



Ground Floor



First Floor



Second Floor



## THREE BEDROOM TOWNHOUSE - TYPE B

Internal Area	1327 sq.ft
Outdoor Area (Balconies, Backyard, Frontyard)	962.7 sq.ft
<b>Total Settable Area</b>	<b>2289.5 sq.ft</b>

# Unit Types



Ground Floor



First Floor



Second Floor



## THREE BEDROOM TOWNHOUSE - TYPE C

Internal Area	1300.9 sq ft
Outdoor Area (Balconies, Backyard, Frontyard)	573.5 sq ft
<b>Total Saleable Area</b>	<b>1875 sq ft</b>

# Unit Types



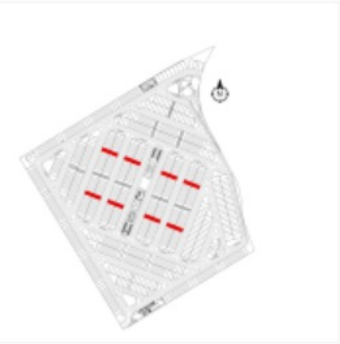
Ground Floor



First Floor



Second Floor



### THREE BEDROOM TOWNHOUSE - TYPE C\*

Internal Area	1326.8 sq ft
Outdoor Area (Balconies, Backyard, Frontyard)	575.5 sq ft
<b>Total Saleable Area</b>	<b>1902.3 sq ft</b>

# Unit Types



Ground Floor



First Floor



Second Floor



## FOUR BEDROOM TOWNHOUSE - TYPE A

Internal Area	1555.7 sq.ft
Outdoor Area (Balconies, Backyard, Frontyard)	780 sq.ft
Total Saleable Area	2335.7 sq.ft

# Unit Types



Ground Floor



First Floor



Second Floor



## FOUR BEDROOM TOWNHOUSE - TYPE B

Internal Area	1555.7 sq.ft
Outdoor Area (Balconies, Backyard, Frontyard)	780 sq.ft
<b>Total Sellable Area</b>	<b>2336.7 sq.ft</b>



# Unit Types



Ground Floor



First Floor



Second Floor



## FOUR BEDROOM TOWNHOUSE - TYPE C

Internal Area	1524 sq.ft
Outdoor Area (Balconies, Backyard, Frontyard)	388 sq.ft
<b>Total Sellable Area</b>	<b>1912.2 sq.ft</b>

# Unit Types



Ground Floor



First Floor



Second Floor



## FIVE BEDROOM TOWNHOUSE - TYPE A

Internal Area	1744 sq.ft
Outdoor Area (Balconies, Backyard, Frontyard)	1996 sq.ft
<b>Total Settable Area</b>	<b>2940 sq.ft</b>

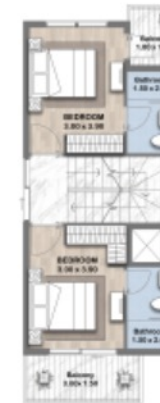
# Unit Types



Ground Floor



First Floor



Second Floor



## FIVE BEDROOM TOWNHOUSE - TYPE B

Internal Area	1764 sq ft
Outdoor Area (Balconies, Backyard, Frontyard)	1106 sq ft
<b>Total Sellable Area</b>	<b>2840 sq ft</b>

# Unit Types



Ground Floor



First Floor



Second Floor



## FIVE BEDROOM TOWNHOUSE - TYPE C

Internal Area	1738.5 sq.ft
Outdoor Area (Balconies, Backyard, Frontyard)	665.5 sq.ft
<b>Total Sellable Area</b>	<b>2404 sq.ft</b>













# **Reportage Group**

**Dot Your Life**

