

# DIFC Living

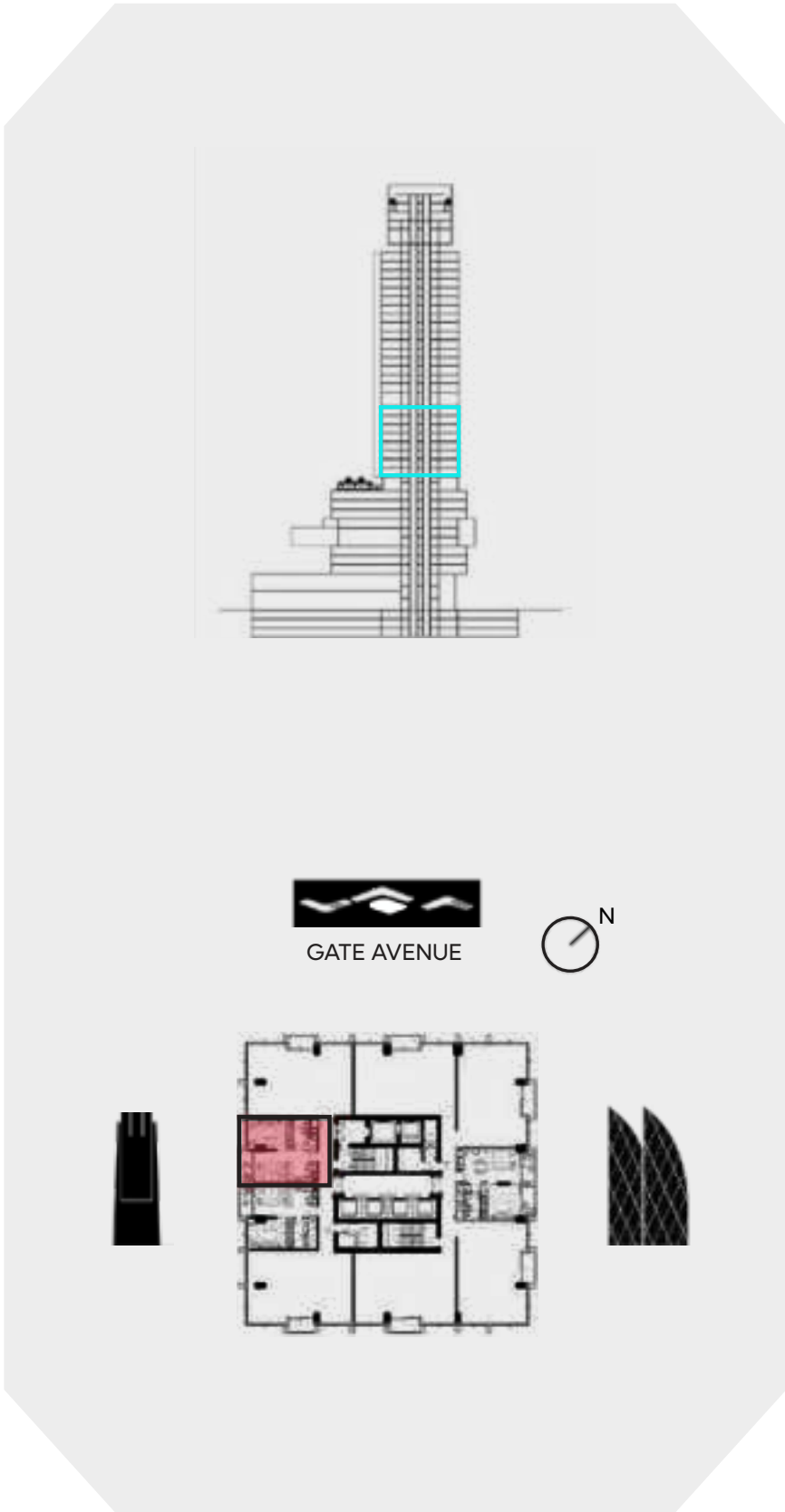
## FLOOR PLAN

# 1 BEDROOM A

LEVEL 10-17

**UNIT AREA**

|                   |                    |                      |
|-------------------|--------------------|----------------------|
| INTERNAL AREA     | 54.93 SQ.M.        | 591.26 SQ.FT.        |
| EXTERNAL AREA     | 5.59 SQ.M.         | 60.17 SQ.FT.         |
| <b>TOTAL AREA</b> | <b>60.52 SQ.M.</b> | <b>651.43 SQ.FT.</b> |



**DISCLAIMER:**

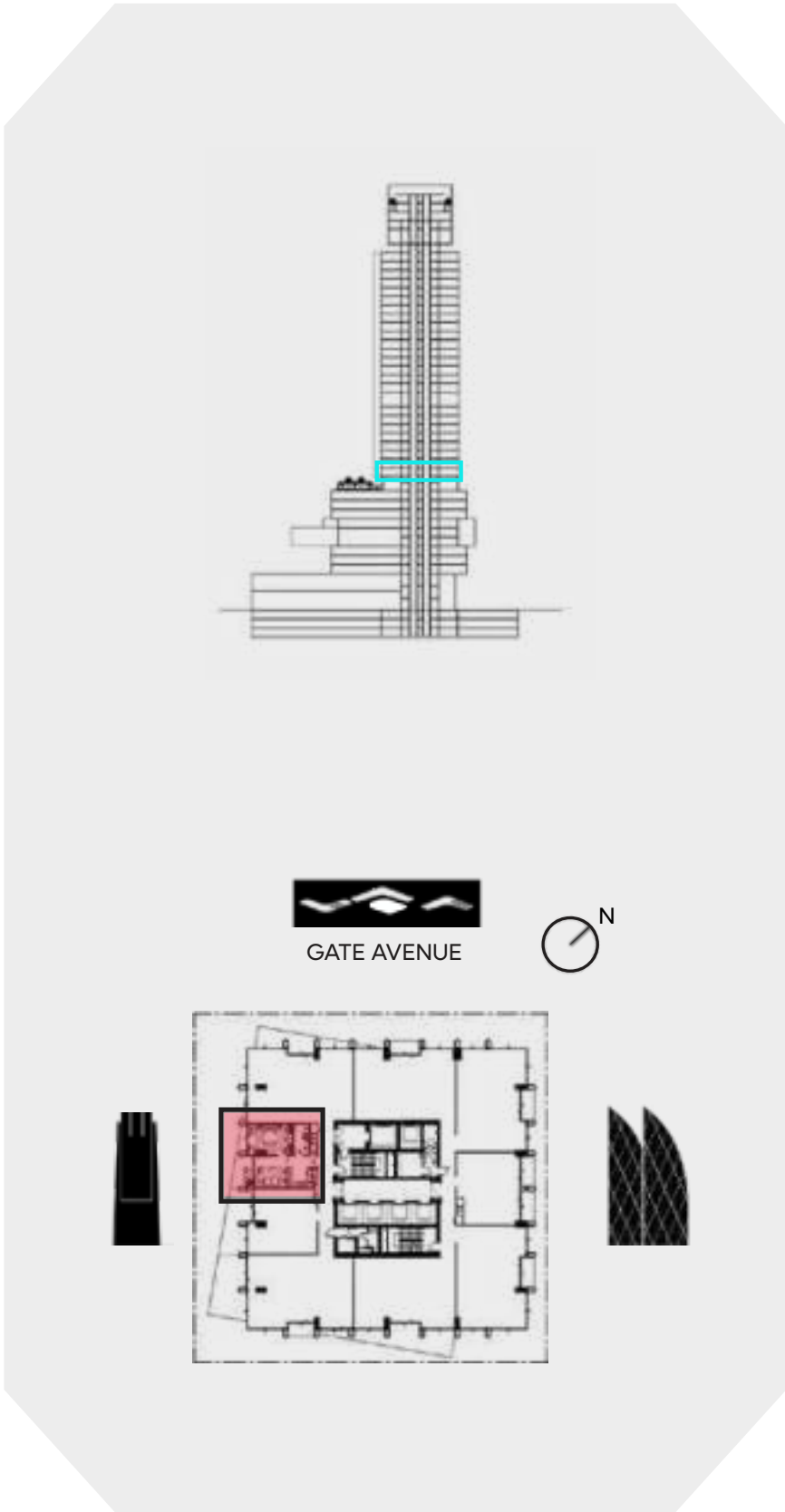
All measurements are indicative and are for marketing purposes only. All efforts have been made to ensure their accuracy, however these layouts are subject to change at the discretion of the developer and should not be relied upon as final. The actual area may vary from the stated area and the developer reserves the right to make the revisions/alterations, at its absolute discretion, without any liability whatsoever.

# 1 BEDROOM A1

LEVEL 10

**UNIT AREA**

|                   |                    |                      |
|-------------------|--------------------|----------------------|
| INTERNAL AREA     | 54.93 SQ.M.        | 591.26 SQ.FT.        |
| EXTERNAL AREA     | 11.67 SQ.M.        | 125.61 SQ.FT.        |
| <b>TOTAL AREA</b> | <b>66.59 SQ.M.</b> | <b>716.87 SQ.FT.</b> |



**DISCLAIMER:**

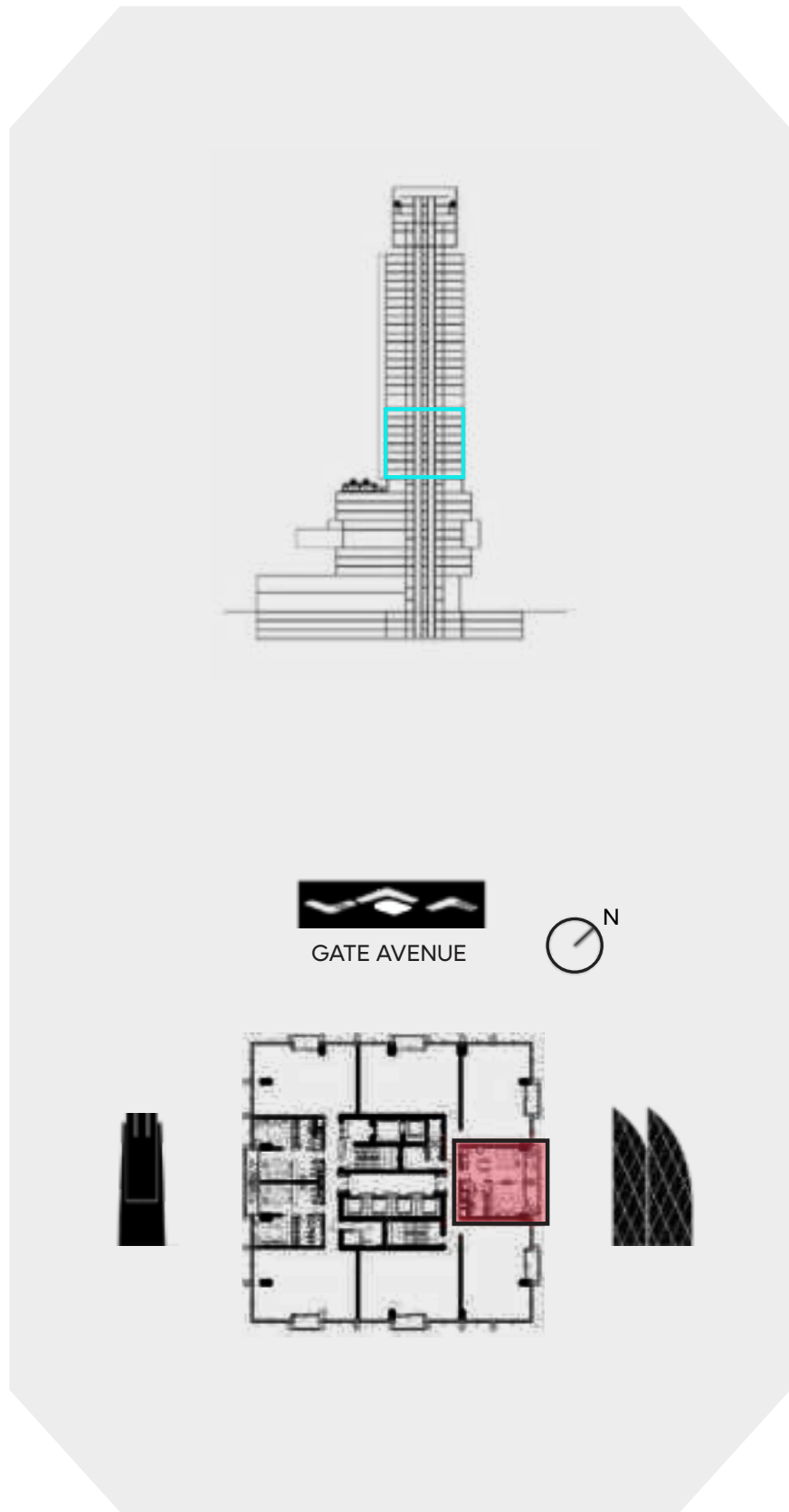
All measurements are indicative and are for marketing purposes only. All efforts have been made to ensure their accuracy, however these layouts are subject to change at the discretion of the developer and should not be relied upon as final. The actual area may vary from the stated area and the developer reserves the right to make the revisions/alterations, at its absolute discretion, without any liability whatsoever.

# 1 BEDROOM B

LEVEL 10-17

**UNIT AREA**

|                   |                    |                      |
|-------------------|--------------------|----------------------|
| INTERNAL AREA     | 58.36 SQ.M.        | 628.18 SQ.FT.        |
| EXTERNAL AREA     | 11.69 SQ.M.        | 125.82 SQ.FT.        |
| <b>TOTAL AREA</b> | <b>70.05 SQ.M.</b> | <b>754.00 SQ.FT.</b> |



**DISCLAIMER:**

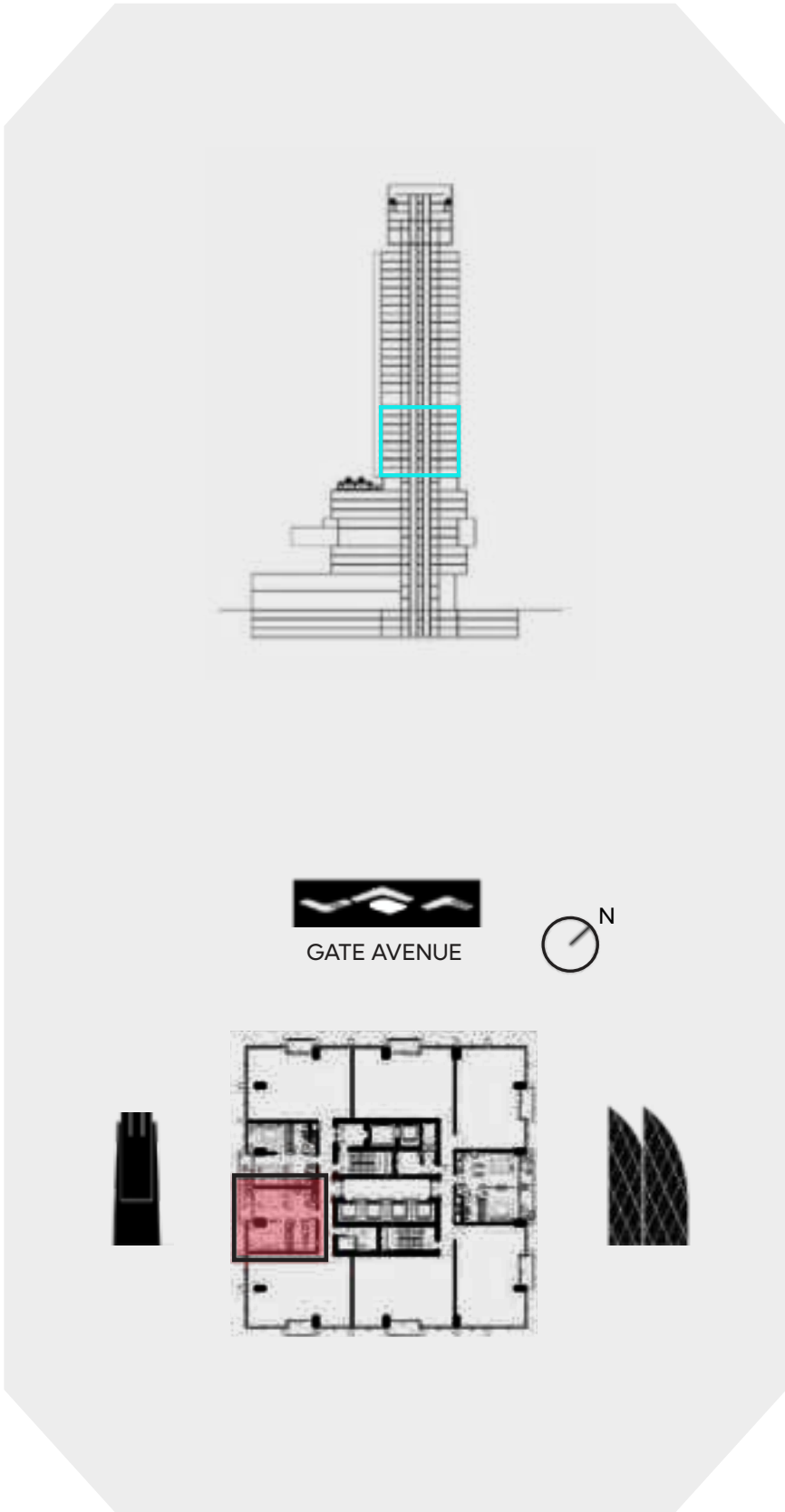
All measurements are indicative and are for marketing purposes only. All efforts have been made to ensure their accuracy, however these layouts are subject to change at the discretion of the developer and should not be relied upon as final. The actual area may vary from the stated area and the developer reserves the right to make the revisions/alterations, at its absolute discretion, without any liability whatsoever.

# 1 BEDROOM C

LEVEL 10-17

**UNIT AREA**

|                   |                    |                      |
|-------------------|--------------------|----------------------|
| INTERNAL AREA     | 54.28 SQ.M.        | 584.26 SQ.FT.        |
| EXTERNAL AREA     | 5.59 SQ.M.         | 60.17 SQ.FT.         |
| <b>TOTAL AREA</b> | <b>59.87 SQ.M.</b> | <b>644.43 SQ.FT.</b> |



**DISCLAIMER:**

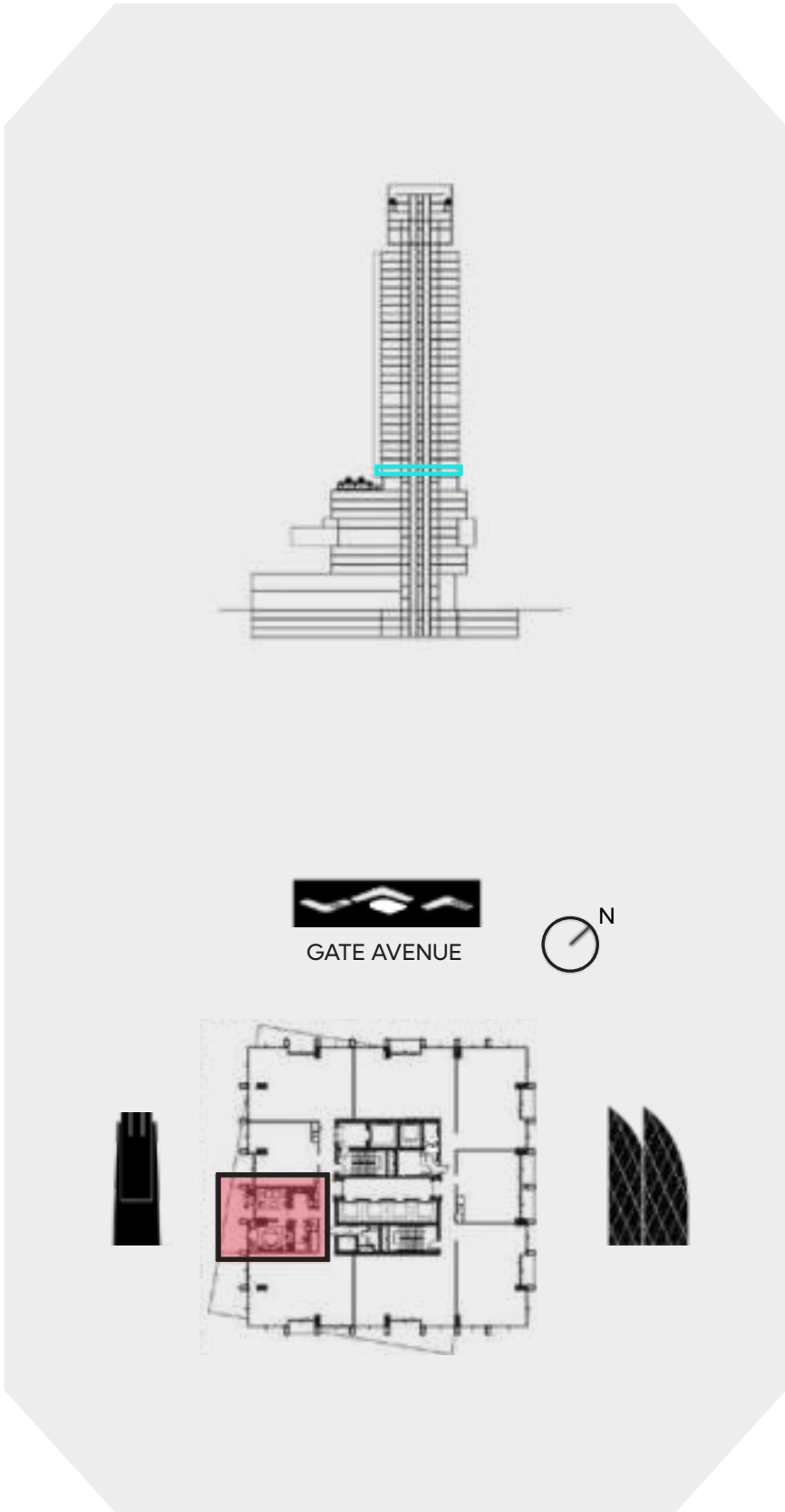
All measurements are indicative and are for marketing purposes only. All efforts have been made to ensure their accuracy, however these layouts are subject to change at the discretion of the developer and should not be relied upon as final. The actual area may vary from the stated area and the developer reserves the right to make the revisions/alterations, at its absolute discretion, without any liability whatsoever.

# 1 BEDROOM C1

LEVEL 10

**UNIT AREA**

|                   |                    |               |               |
|-------------------|--------------------|---------------|---------------|
| INTERNAL AREA     | 54.29 SQ.M.        | 584.37        | SQ.FT.        |
| EXTERNAL AREA     | 21.52 SQ.M.        | 231.63        | SQ.FT.        |
| <b>TOTAL AREA</b> | <b>75.81 SQ.M.</b> | <b>816.00</b> | <b>SQ.FT.</b> |



**DISCLAIMER:**

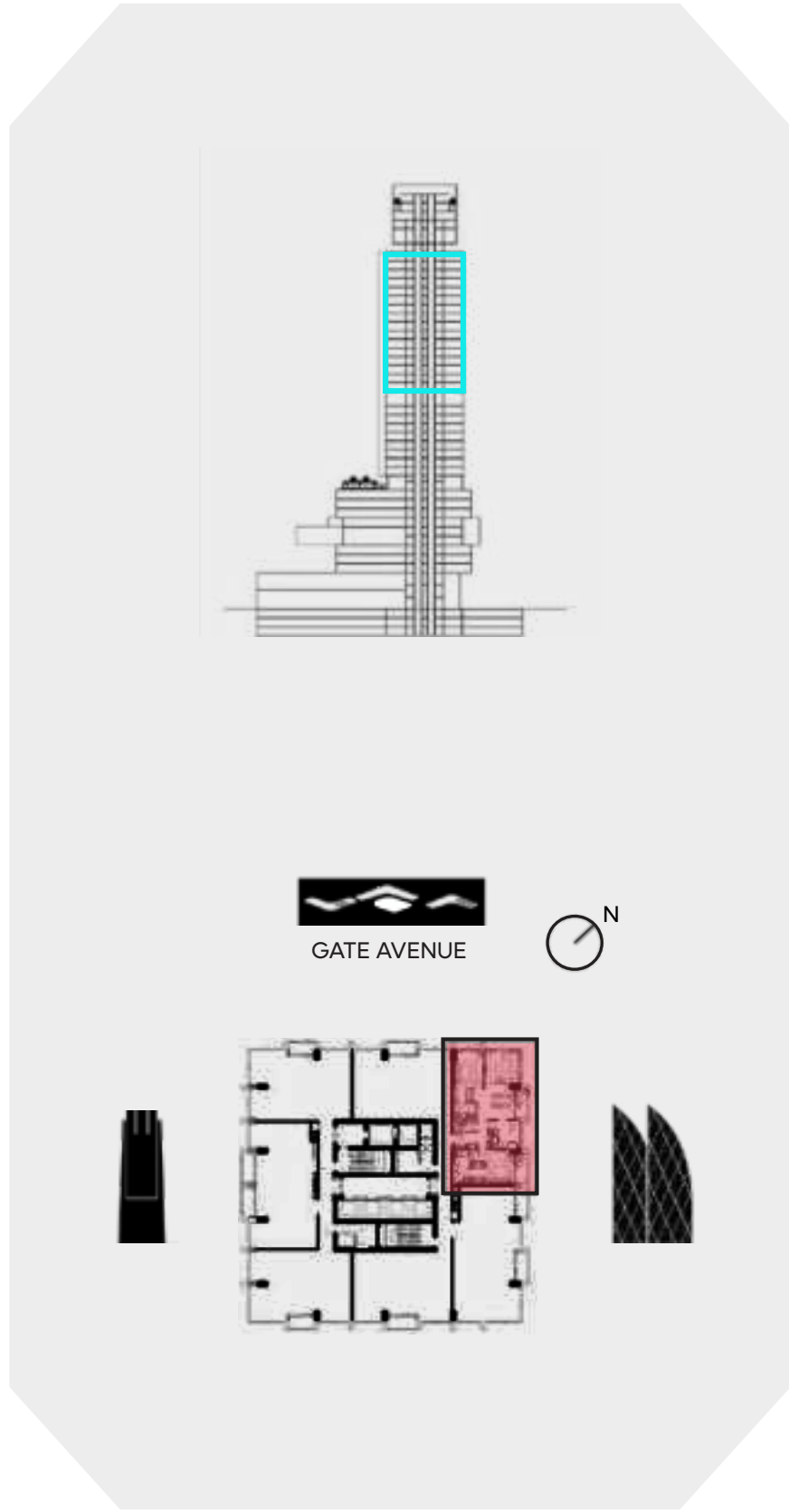
All measurements are indicative and are for marketing purposes only. All efforts have been made to ensure their accuracy, however these layouts are subject to change at the discretion of the developer and should not be relied upon as final. The actual area may vary from the stated area and the developer reserves the right to make the revisions/alterations, at its absolute discretion, without any liability whatsoever.

# 2 BEDROOM A

LEVEL 19-34

**UNIT AREA**

|                   |                     |                 |               |
|-------------------|---------------------|-----------------|---------------|
| INTERNAL AREA     | 121.04 SQ.M.        | 1,302.86        | SQ.FT.        |
| EXTERNAL AREA     | 11.45 SQ.M.         | 123.24          | SQ.FT.        |
| <b>TOTAL AREA</b> | <b>132.49 SQ.M.</b> | <b>1,426.10</b> | <b>SQ.FT.</b> |



**DISCLAIMER:**

All measurements are indicative and are for marketing purposes only. All efforts have been made to ensure their accuracy, however these layouts are subject to change at the discretion of the developer and should not be relied upon as final. The actual area may vary from the stated area and the developer reserves the right to make the revisions/alterations, at its absolute discretion, without any liability whatsoever.

# 2 BEDROOM B

LEVEL 19-34

**UNIT AREA**

|                   |                     |                 |               |
|-------------------|---------------------|-----------------|---------------|
| INTERNAL AREA     | 107.56 SQ.M.        | 1,157.76        | SQ.FT.        |
| EXTERNAL AREA     | 11.08 SQ.M.         | 119.26          | SQ.FT.        |
| <b>TOTAL AREA</b> | <b>118.64 SQ.M.</b> | <b>1,277.02</b> | <b>SQ.FT.</b> |



**DISCLAIMER:**

All measurements are indicative and are for marketing purposes only. All efforts have been made to ensure their accuracy, however these layouts are subject to change at the discretion of the developer and should not be relied upon as final. The actual area may vary from the stated area and the developer reserves the right to make the revisions/alterations, at its absolute discretion, without any liability whatsoever.

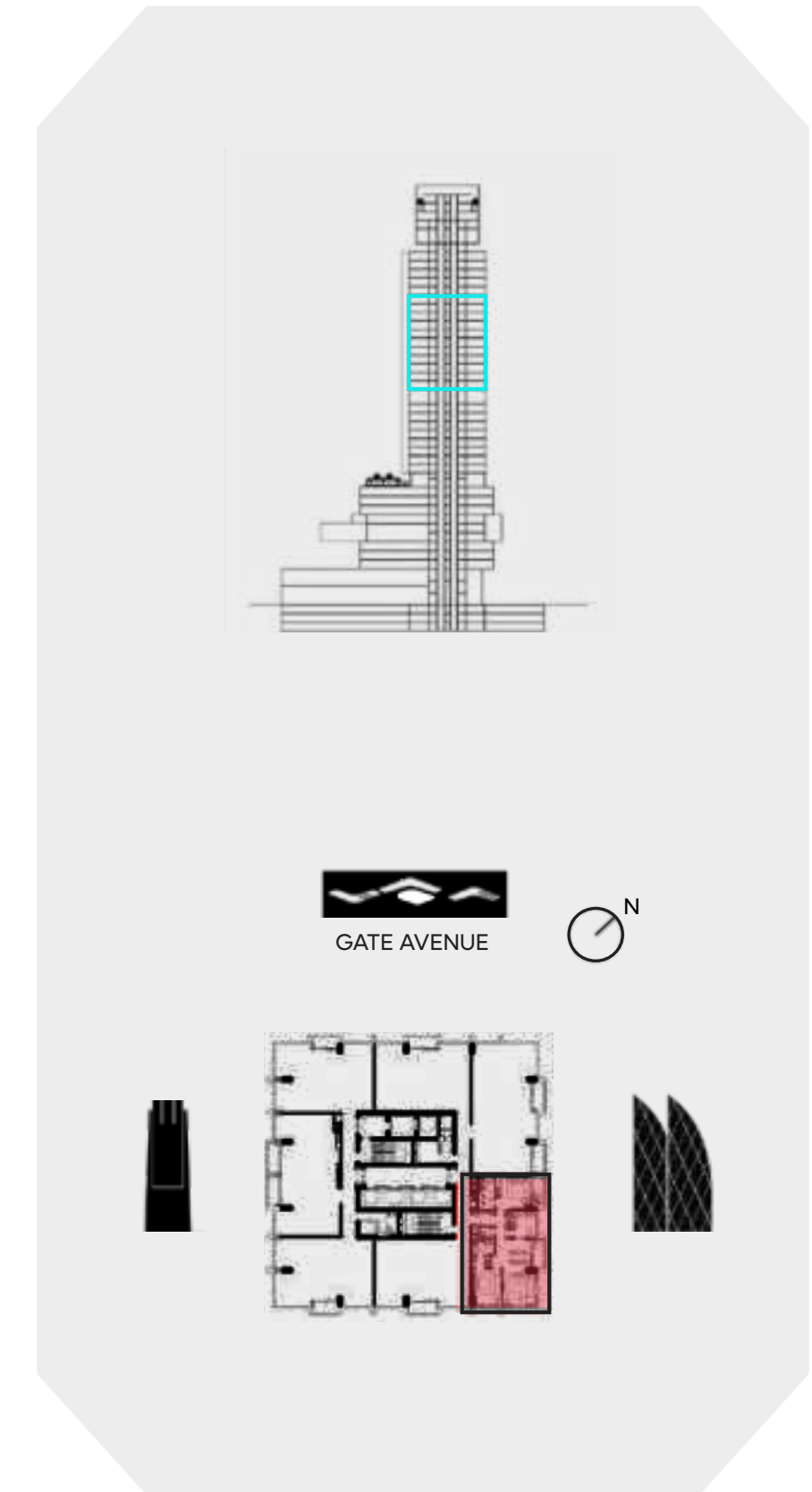


# 2 BEDROOM C

LEVEL 19-29

**UNIT AREA**

|                   |                     |                        |
|-------------------|---------------------|------------------------|
| INTERNAL AREA     | 117.08 SQ.M.        | 1,260.23 SQ.FT.        |
| EXTERNAL AREA     | 11.41 SQ.M.         | 122.81 SQ.FT.          |
| <b>TOTAL AREA</b> | <b>128.49 SQ.M.</b> | <b>1,383.04 SQ.FT.</b> |



## DISCLAIMER:

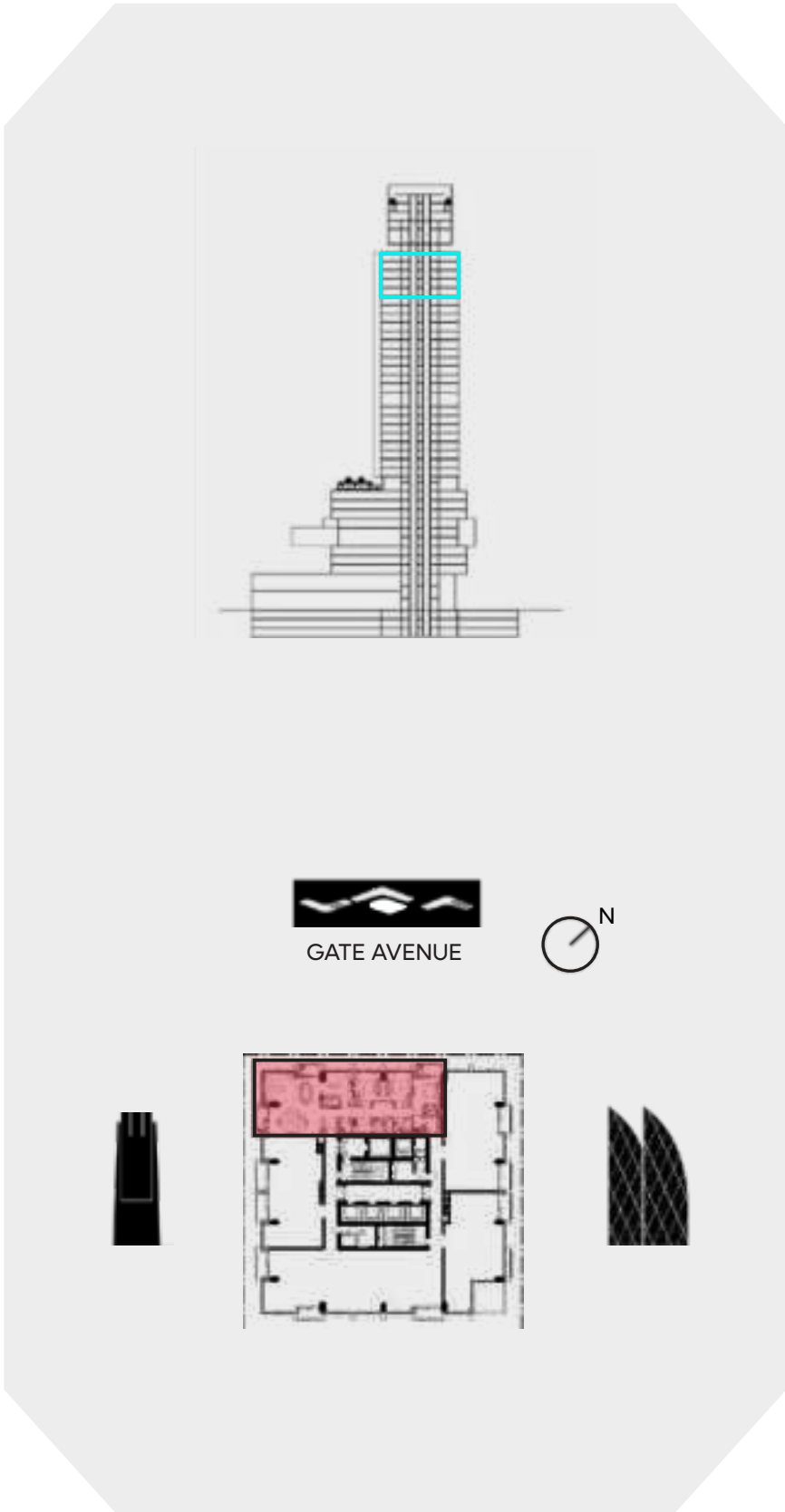
All measurements are indicative and are for marketing purposes only. All efforts have been made to ensure their accuracy, however these layouts are subject to change at the discretion of the developer and should not be relied upon as final. The actual area may vary from the stated area and the developer reserves the right to make the revisions/alterations, at its absolute discretion, without any liability whatsoever.

# 3 BEDROOM A

LEVEL 31-34

**UNIT AREA**

|                   |                     |                        |
|-------------------|---------------------|------------------------|
| INTERNAL AREA     | 189.24 SQ.M.        | 2,036.96 SQ.FT.        |
| EXTERNAL AREA     | 16.22 SQ.M.         | 174.59 SQ.FT.          |
| <b>TOTAL AREA</b> | <b>205.46 SQ.M.</b> | <b>2,211.55 SQ.FT.</b> |



**DISCLAIMER:**

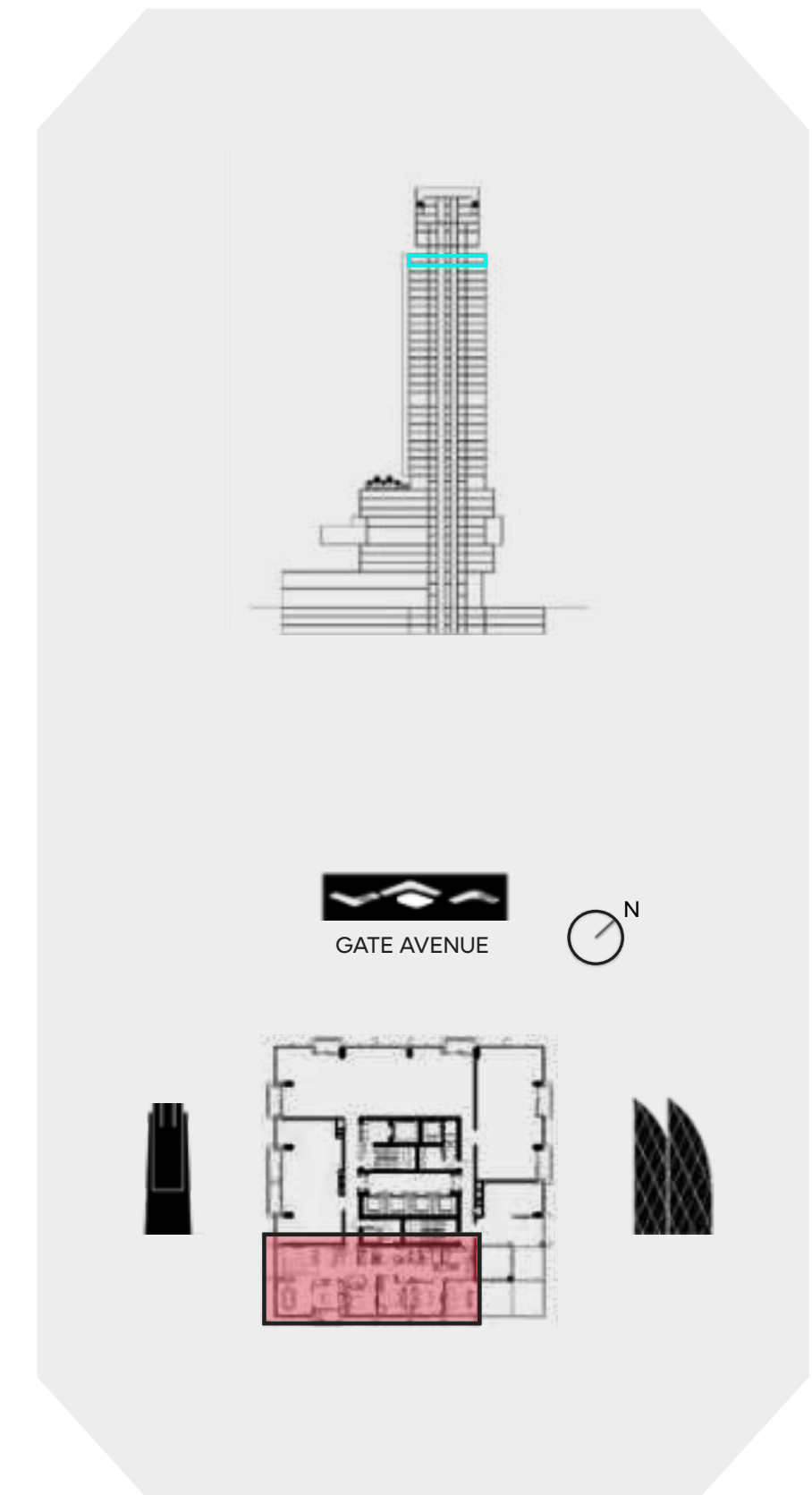
All measurements are indicative and are for marketing purposes only. All efforts have been made to ensure their accuracy, however these layouts are subject to change at the discretion of the developer and should not be relied upon as final. The actual area may vary from the stated area and the developer reserves the right to make the revisions/alterations, at its absolute discretion, without any liability whatsoever.

# 3 BEDROOM B

LEVEL 34

**UNIT AREA**

|                   |                     |                 |               |
|-------------------|---------------------|-----------------|---------------|
| INTERNAL AREA     | 178.78 SQ.M.        | 1,924.37        | SQ.FT.        |
| EXTERNAL AREA     | 22.07 SQ.M.         | 237.55          | SQ.FT.        |
| <b>TOTAL AREA</b> | <b>200.85 SQ.M.</b> | <b>2,161.92</b> | <b>SQ.FT.</b> |



## DISCLAIMER:

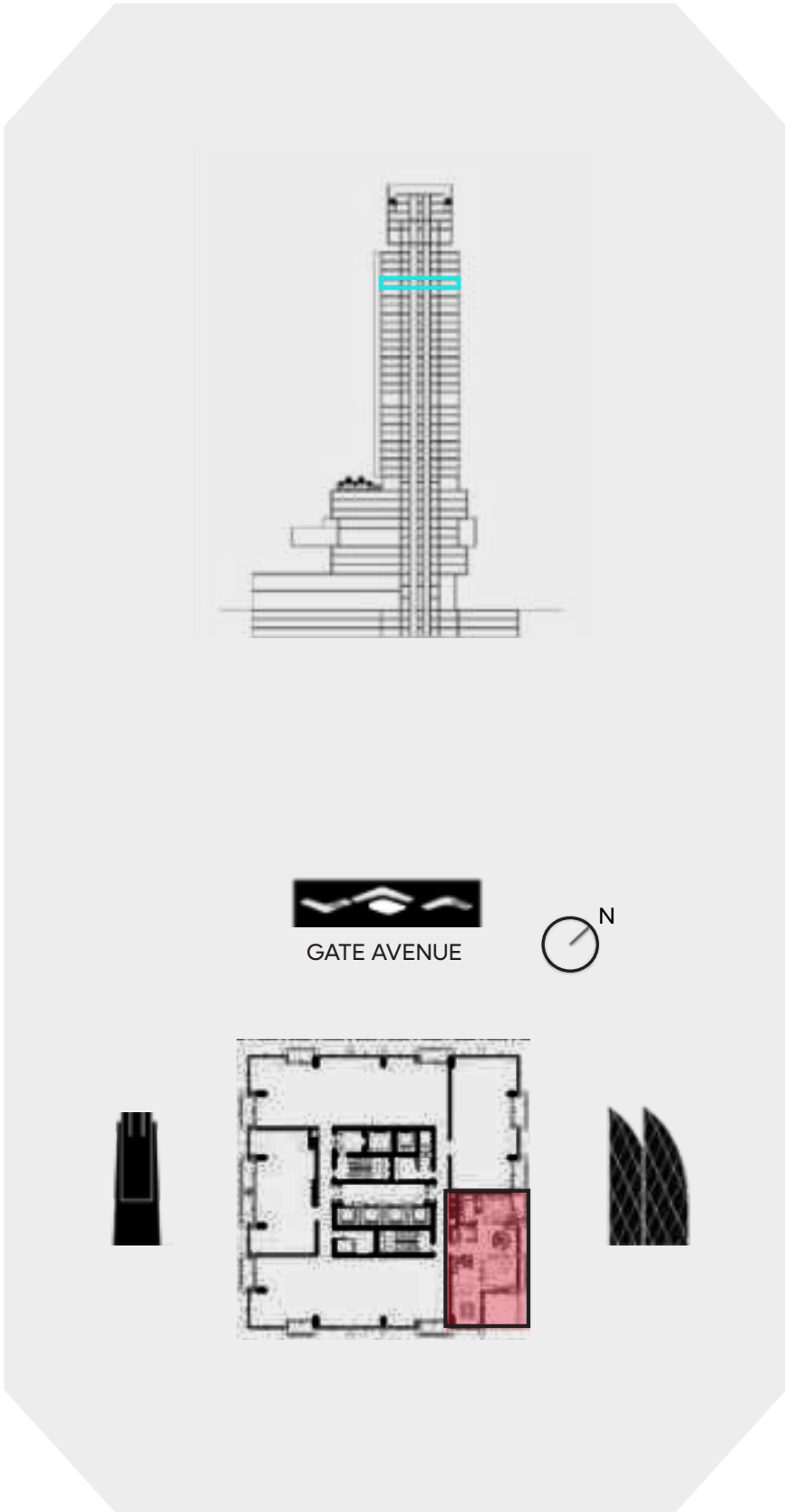
All measurements are indicative and are for marketing purposes only. All efforts have been made to ensure their accuracy, however these layouts are subject to change at the discretion of the developer and should not be relied upon as final. The actual area may vary from the stated area and the developer reserves the right to make the revisions/alterations, at its absolute discretion, without any liability whatsoever.

# 3 BEDROOM LOFT

LOWER LEVEL  
LEVEL 31

**UNIT AREA**

|                   |                     |                        |
|-------------------|---------------------|------------------------|
| INTERNAL AREA     | 189.42 SQ.M.        | 2,038.89 SQ.FT.        |
| EXTERNAL AREA     | 32.52 SQ.M.         | 350.04 SQ.FT.          |
| <b>TOTAL AREA</b> | <b>221.94 SQ.M.</b> | <b>2,388.93 SQ.FT.</b> |



**DISCLAIMER:**

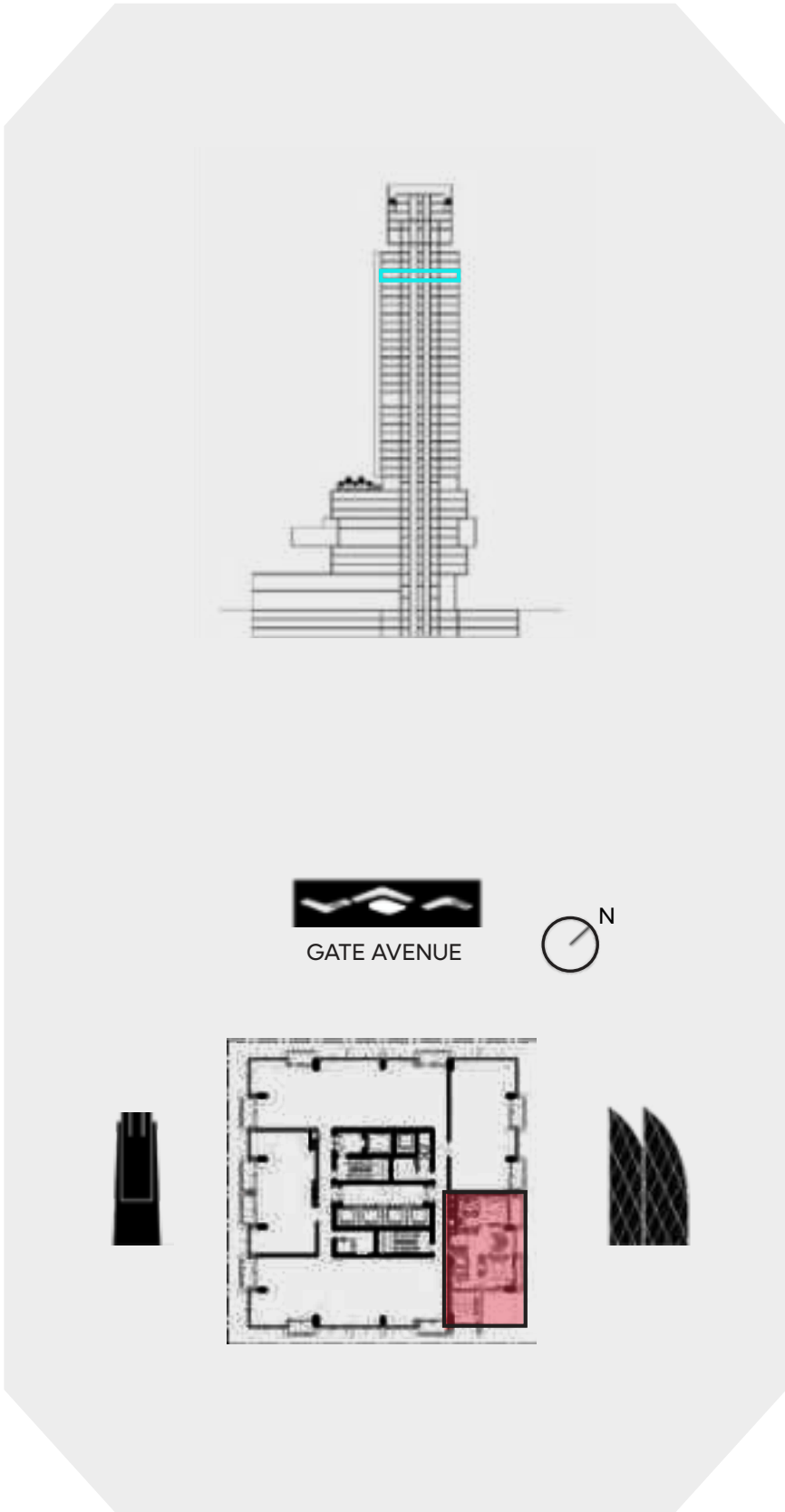
All measurements are indicative and are for marketing purposes only. All efforts have been made to ensure their accuracy, however these layouts are subject to change at the discretion of the developer and should not be relied upon as final. The actual area may vary from the stated area and the developer reserves the right to make the revisions/alterations, at its absolute discretion, without any liability whatsoever.

# 3 BEDROOM LOFT

UPPER LEVEL  
LEVEL 32

**UNIT AREA**

|                   |                     |                        |
|-------------------|---------------------|------------------------|
| INTERNAL AREA     | 189.42 SQ.M.        | 2,038.89 SQ.FT.        |
| EXTERNAL AREA     | 32.52 SQ.M.         | 350.04 SQ.FT.          |
| <b>TOTAL AREA</b> | <b>221.94 SQ.M.</b> | <b>2,388.93 SQ.FT.</b> |



**DISCLAIMER:**

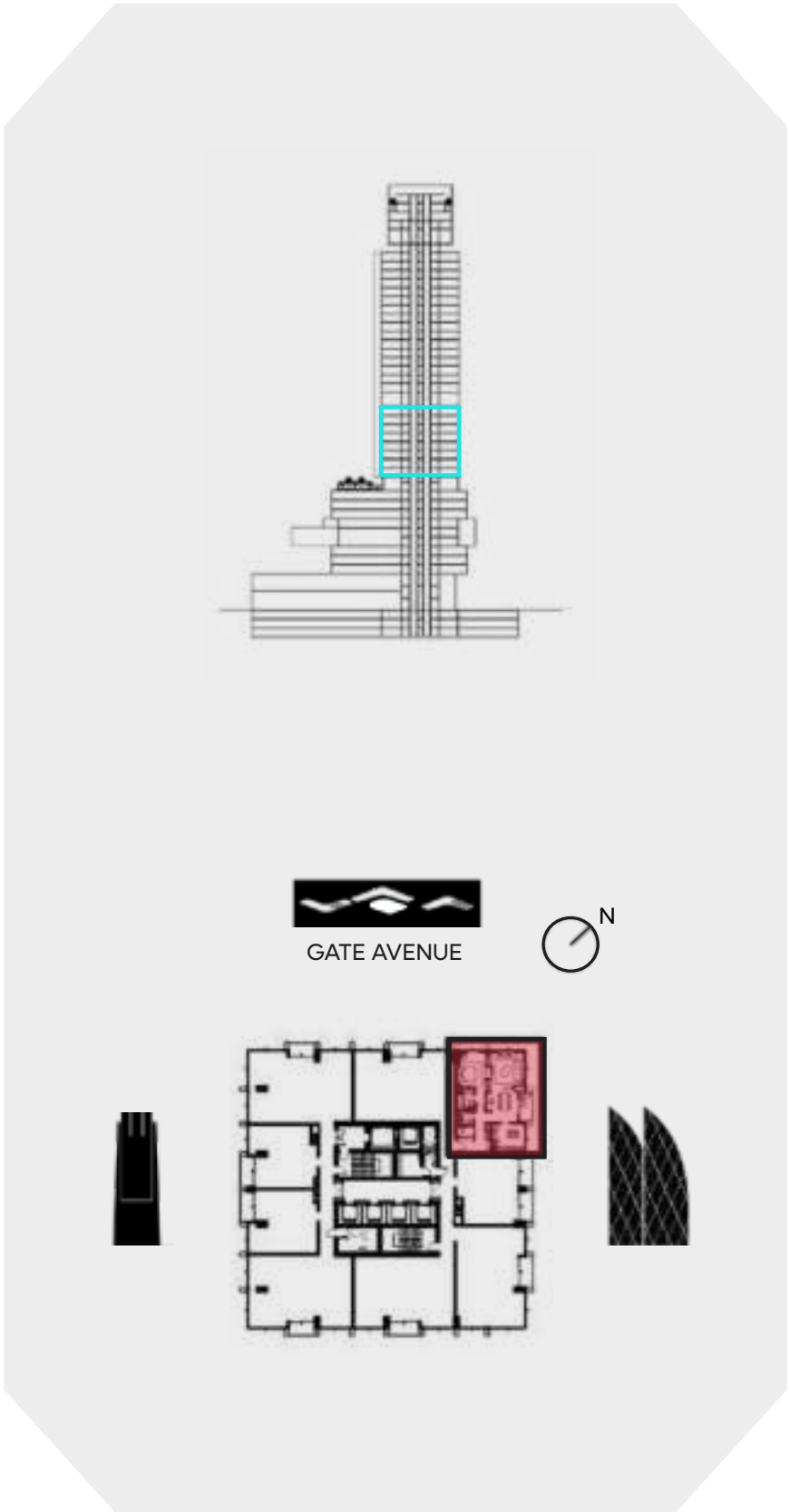
All measurements are indicative and are for marketing purposes only. All efforts have been made to ensure their accuracy, however these layouts are subject to change at the discretion of the developer and should not be relied upon as final. The actual area may vary from the stated area and the developer reserves the right to make the revisions/alterations, at its absolute discretion, without any liability whatsoever.

# EXECUTIVE 1 BEDROOM A

LEVEL 10-17

**UNIT AREA**

|                   |                    |                        |
|-------------------|--------------------|------------------------|
| INTERNAL AREA     | 90.38 SQ.M.        | 972.84 SQ.FT.          |
| EXTERNAL AREA     | 5.72 SQ.M.         | 61.56 SQ.FT.           |
| <b>TOTAL AREA</b> | <b>96.10 SQ.M.</b> | <b>1,034.40 SQ.FT.</b> |



**DISCLAIMER:**

All measurements are indicative and are for marketing purposes only. All efforts have been made to ensure their accuracy, however these layouts are subject to change at the discretion of the developer and should not be relied upon as final. The actual area may vary from the stated area and the developer reserves the right to make the revisions/alterations, at its absolute discretion, without any liability whatsoever.

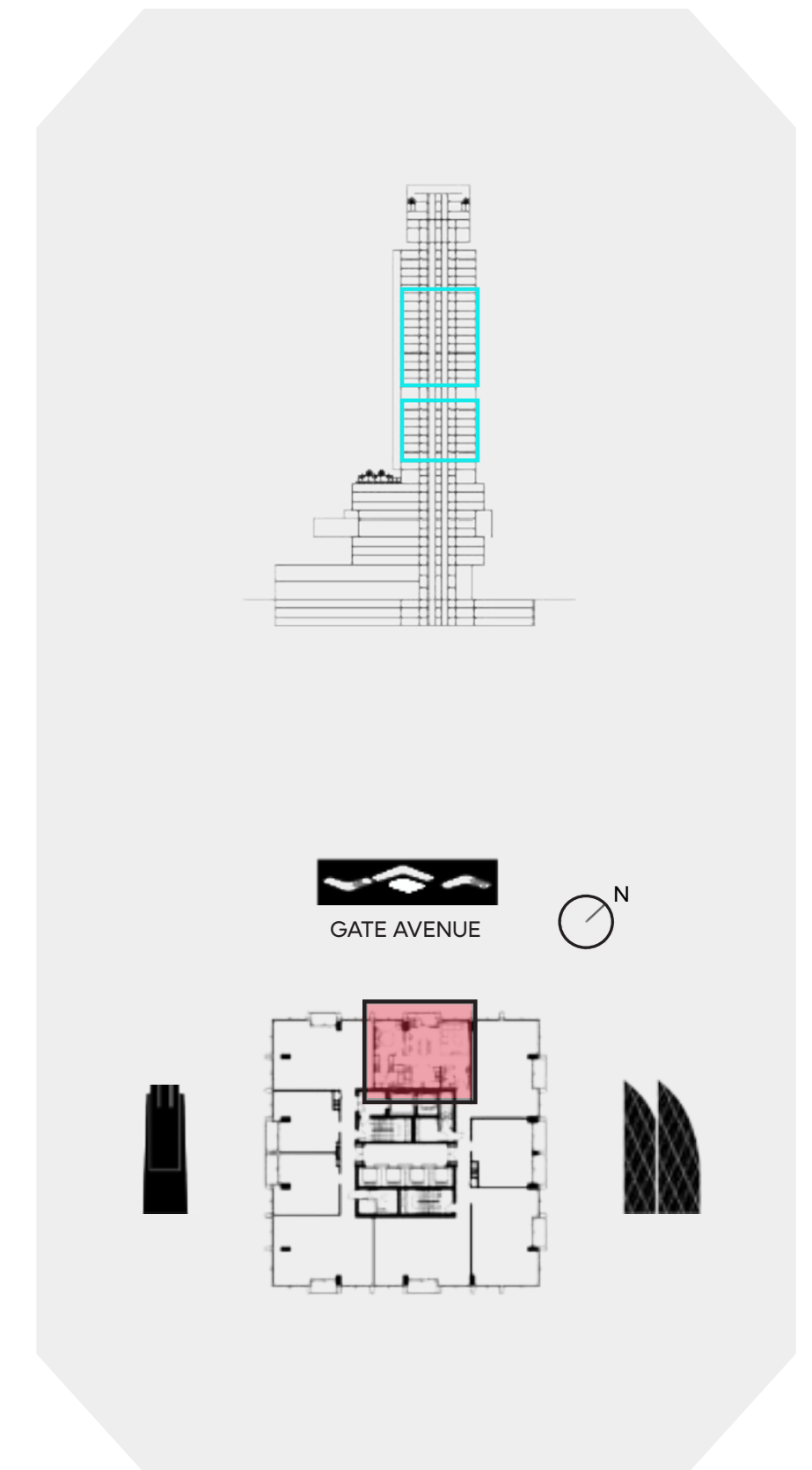
# EXECUTIVE 1 BEDROOM B

LEVEL 11-17

LEVEL 19-30

**UNIT AREA**

|                   |                    |                 |               |
|-------------------|--------------------|-----------------|---------------|
| INTERNAL AREA     | 93.60 SQ.M.        | 1,007.50        | SQ.FT.        |
| EXTERNAL AREA     | 5.70 SQ.M.         | 61.35           | SQ.FT.        |
| <b>TOTAL AREA</b> | <b>99.30 SQ.M.</b> | <b>1,068.85</b> | <b>SQ.FT.</b> |



## DISCLAIMER:

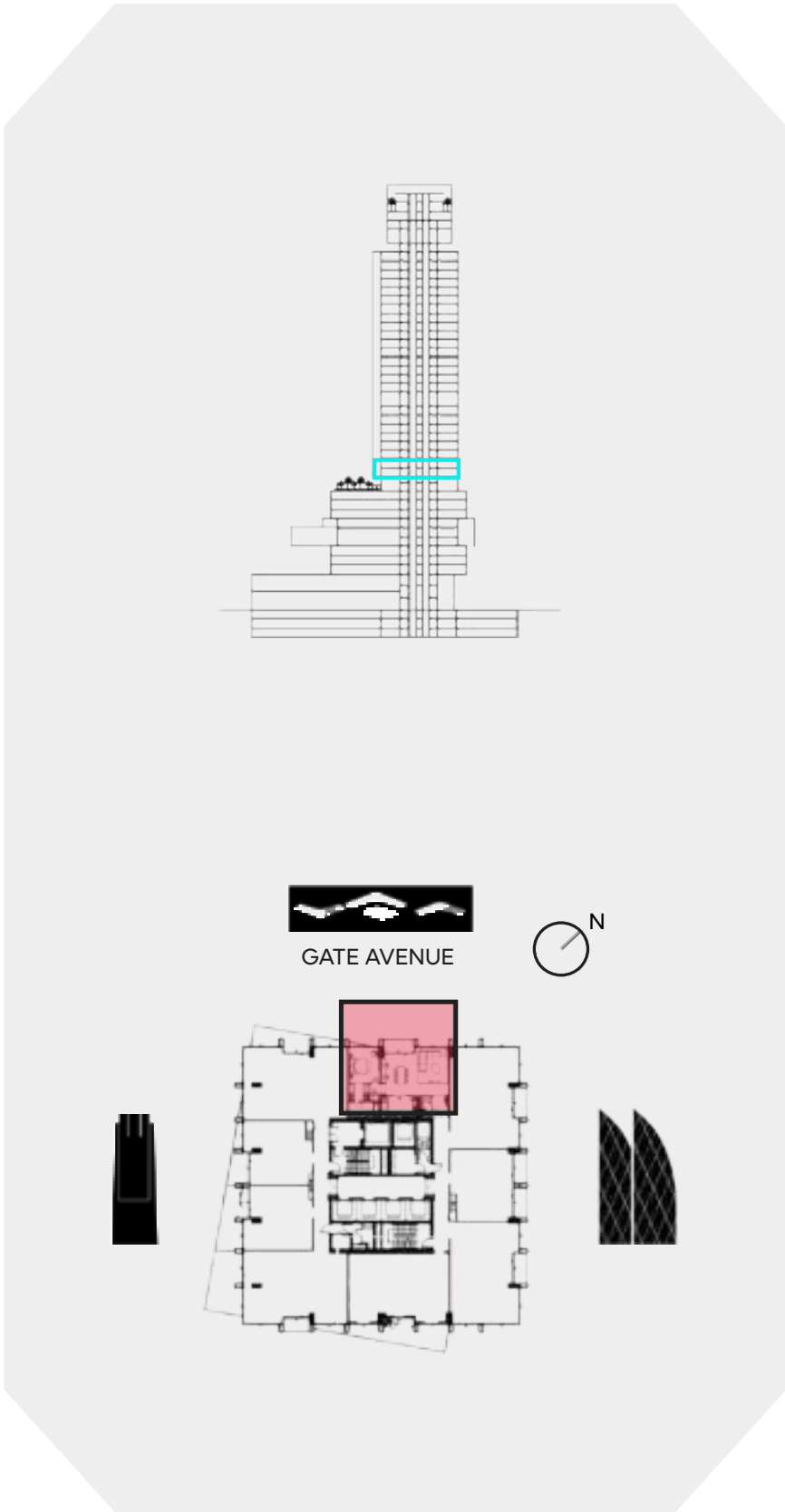
All measurements are indicative and are for marketing purposes only. All efforts have been made to ensure their accuracy, however these layouts are subject to change at the discretion of the developer and should not be relied upon as final. The actual area may vary from the stated area and the developer reserves the right to make the revisions/alterations, at its absolute discretion, without any liability whatsoever.

# EXECUTIVE 1 BEDROOM B1

LEVEL 10

**UNIT AREA**

|                   |                     |                        |
|-------------------|---------------------|------------------------|
| INTERNAL AREA     | 93.60 SQ.M.         | 1,007.50 SQ.FT.        |
| EXTERNAL AREA     | 6.66 SQ.M.          | 71.68 SQ.FT.           |
| <b>TOTAL AREA</b> | <b>100.26 SQ.M.</b> | <b>1,079.18 SQ.FT.</b> |



**DISCLAIMER:**

All measurements are indicative and are for marketing purposes only. All efforts have been made to ensure their accuracy, however these layouts are subject to change at the discretion of the developer and should not be relied upon as final. The actual area may vary from the stated area and the developer reserves the right to make the revisions/alterations, at its absolute discretion, without any liability whatsoever.

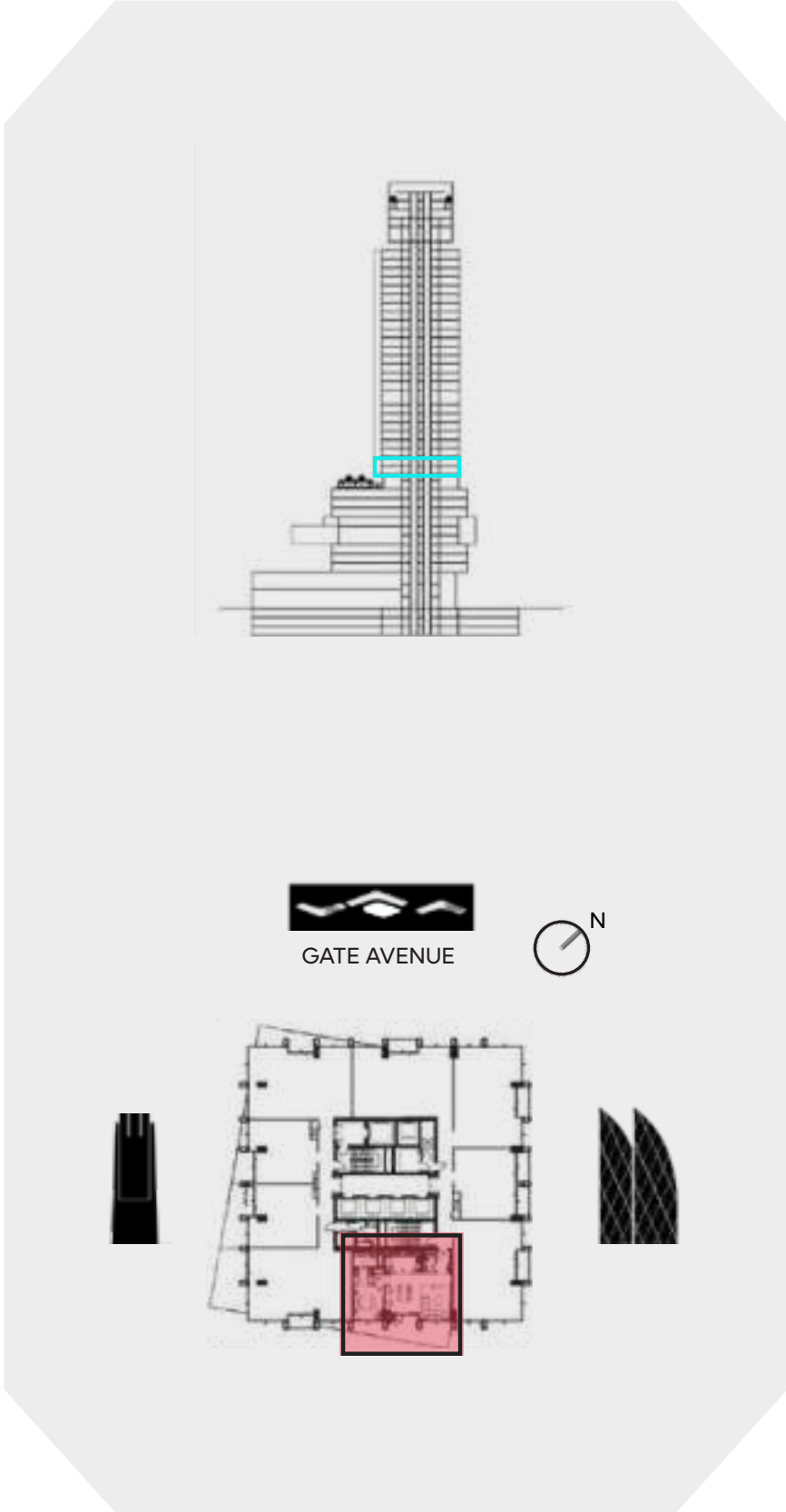


# EXECUTIVE 1 BEDROOM B2

LEVEL 10

**UNIT AREA**

|                   |                     |                 |               |
|-------------------|---------------------|-----------------|---------------|
| INTERNAL AREA     | 93.52 SQ.M.         | 1,006.63        | SQ.FT.        |
| EXTERNAL AREA     | 28.41 SQ.M.         | 305.80          | SQ.FT.        |
| <b>TOTAL AREA</b> | <b>121.93 SQ.M.</b> | <b>1,312.43</b> | <b>SQ.FT.</b> |



## DISCLAIMER:

All measurements are indicative and are for marketing purposes only. All efforts have been made to ensure their accuracy, however these layouts are subject to change at the discretion of the developer and should not be relied upon as final. The actual area may vary from the stated area and the developer reserves the right to make the revisions/alterations, at its absolute discretion, without any liability whatsoever.

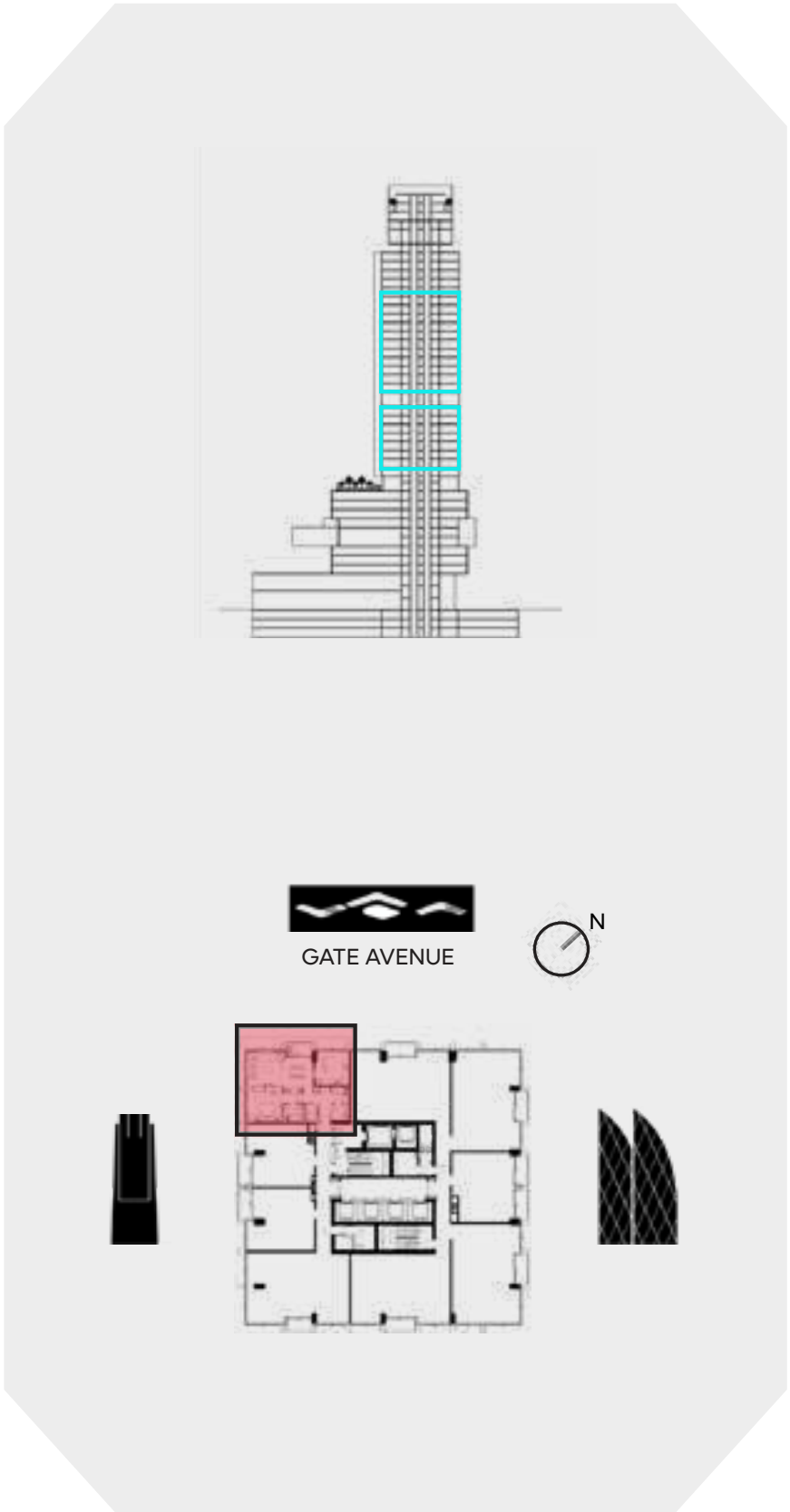
# EXECUTIVE 1 BEDROOM C

LEVEL 11-17

LEVEL 19-30

**UNIT AREA**

|                   |                     |                 |               |
|-------------------|---------------------|-----------------|---------------|
| INTERNAL AREA     | 97.22 SQ.M.         | 1,046.46        | SQ.FT.        |
| EXTERNAL AREA     | 4.96 SQ.M.          | 53.38           | SQ.FT.        |
| <b>TOTAL AREA</b> | <b>102.18 SQ.M.</b> | <b>1,099.84</b> | <b>SQ.FT.</b> |



**DISCLAIMER:**

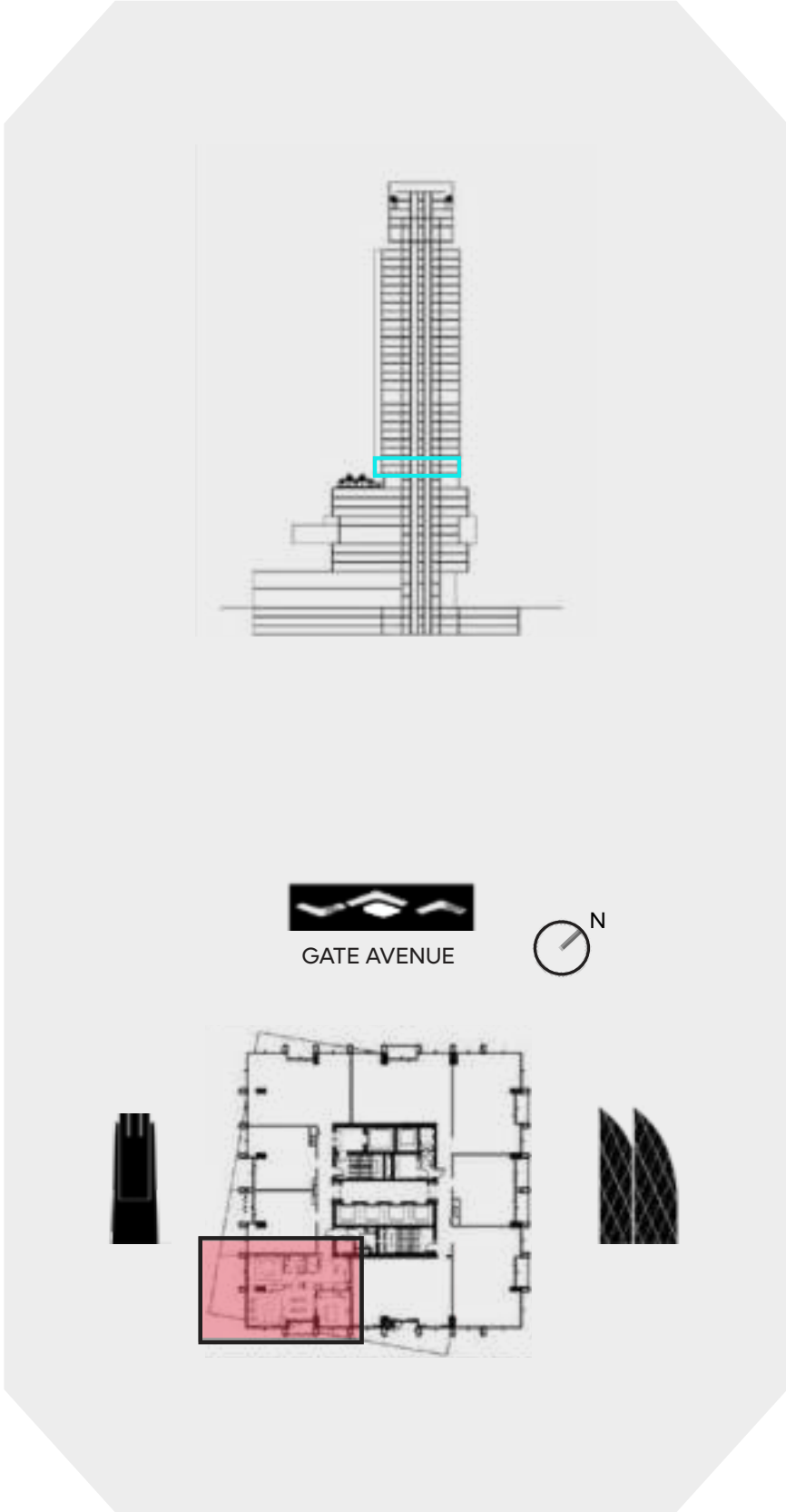
All measurements are indicative and are for marketing purposes only. All efforts have been made to ensure their accuracy, however these layouts are subject to change at the discretion of the developer and should not be relied upon as final. The actual area may vary from the stated area and the developer reserves the right to make the revisions/alterations, at its absolute discretion, without any liability whatsoever.

# EXECUTIVE 1 BEDROOM C1

LEVEL 10

**UNIT AREA**

|                   |                     |                        |
|-------------------|---------------------|------------------------|
| INTERNAL AREA     | 97.32 SQ.M.         | 1,047.54 SQ.FT.        |
| EXTERNAL AREA     | 35.50 SQ.M.         | 382.11 SQ.FT.          |
| <b>TOTAL AREA</b> | <b>132.82 SQ.M.</b> | <b>1,429.65 SQ.FT.</b> |



**DISCLAIMER:**

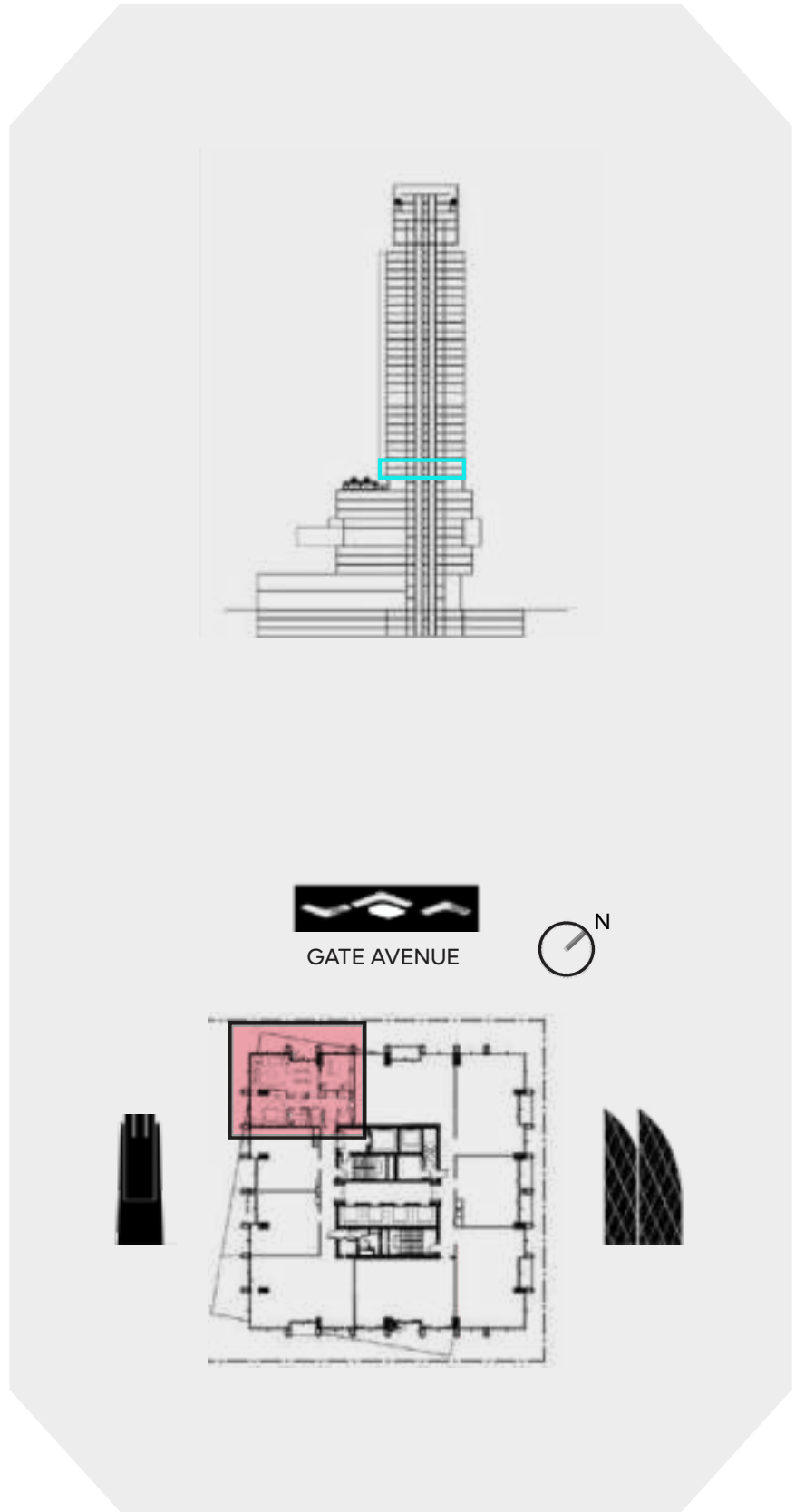
All measurements are indicative and are for marketing purposes only. All efforts have been made to ensure their accuracy, however these layouts are subject to change at the discretion of the developer and should not be relied upon as final. The actual area may vary from the stated area and the developer reserves the right to make the revisions/alterations, at its absolute discretion, without any liability whatsoever.

# EXECUTIVE 1 BEDROOM C2

LEVEL 10

**UNIT AREA**

|                   |                     |                        |
|-------------------|---------------------|------------------------|
| INTERNAL AREA     | 97.25 SQ.M.         | 1,046.78 SQ.FT.        |
| EXTERNAL AREA     | 20.19 SQ.M.         | 217.32 SQ.FT.          |
| <b>TOTAL AREA</b> | <b>117.44 SQ.M.</b> | <b>1,264.10 SQ.FT.</b> |



**DISCLAIMER:**

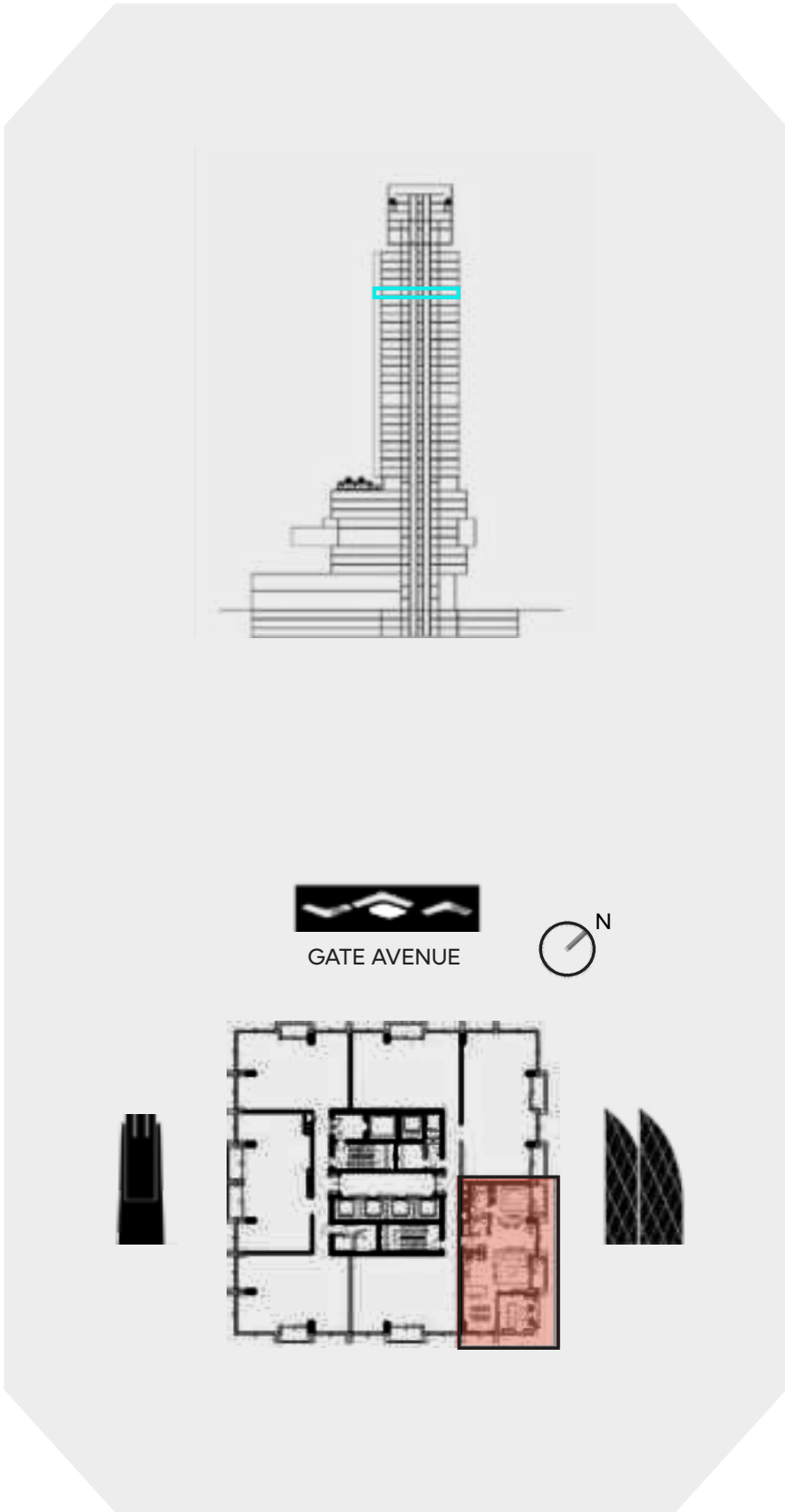
All measurements are indicative and are for marketing purposes only. All efforts have been made to ensure their accuracy, however these layouts are subject to change at the discretion of the developer and should not be relied upon as final. The actual area may vary from the stated area and the developer reserves the right to make the revisions/alterations, at its absolute discretion, without any liability whatsoever.

# EXECUTIVE 1 BEDROOM D

LEVEL 30

**UNIT AREA**

|                   |               |              |                 |               |
|-------------------|---------------|--------------|-----------------|---------------|
| INTERNAL AREA     | 100.29        | SQ.M.        | 1,079.51        | SQ.FT.        |
| EXTERNAL AREA     | 30.09         | SQ.M.        | 323.88          | SQ.FT.        |
| <b>TOTAL AREA</b> | <b>130.38</b> | <b>SQ.M.</b> | <b>1,403.39</b> | <b>SQ.FT.</b> |



**DISCLAIMER:**

All measurements are indicative and are for marketing purposes only. All efforts have been made to ensure their accuracy, however these layouts are subject to change at the discretion of the developer and should not be relied upon as final. The actual area may vary from the stated area and the developer reserves the right to make the revisions/alterations, at its absolute discretion, without any liability whatsoever.

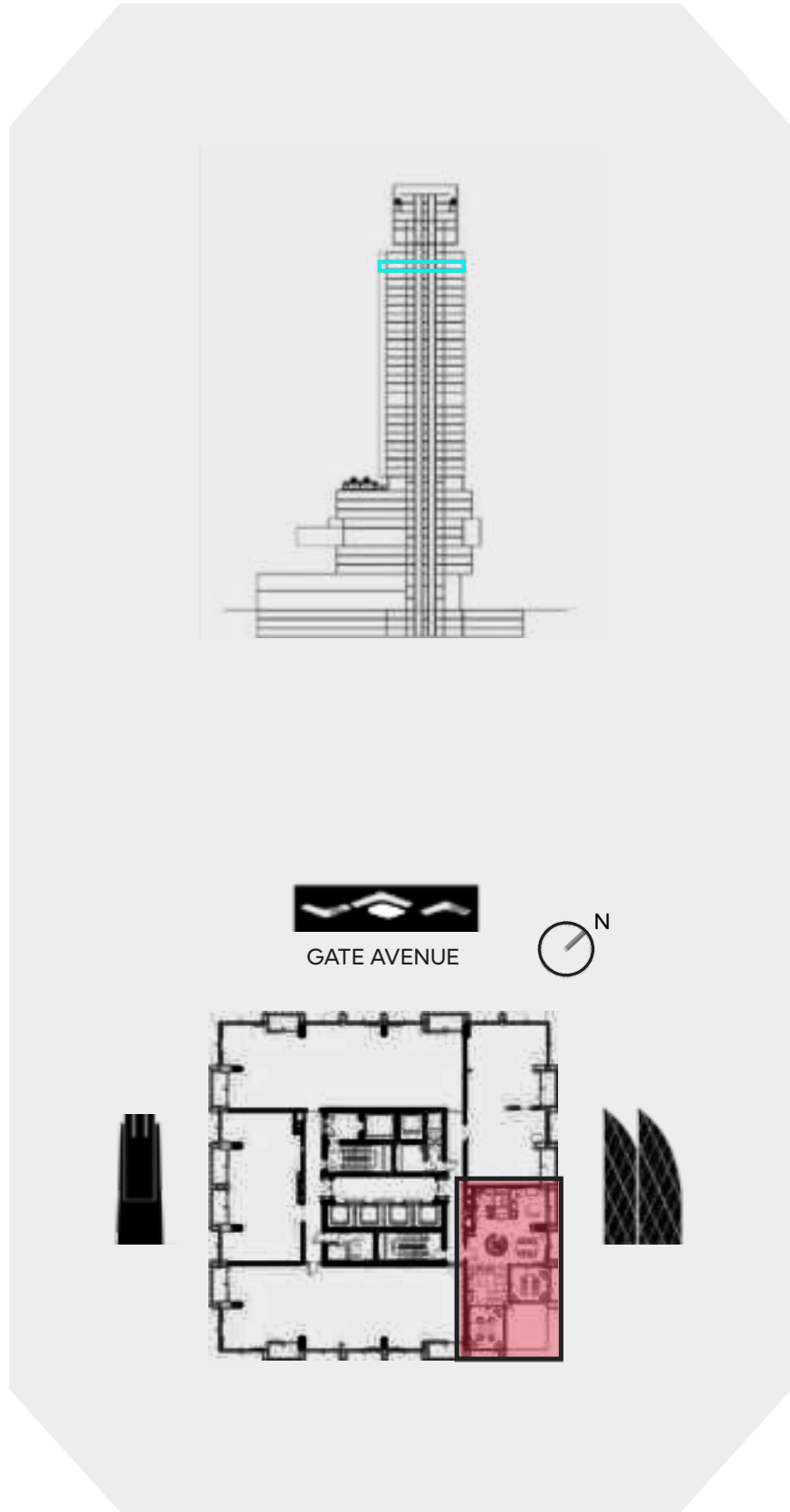
# EXECUTIVE 1 BEDROOM LOFT

LOWER LEVEL

LEVEL 33

**UNIT AREA**

|                   |               |              |                 |               |
|-------------------|---------------|--------------|-----------------|---------------|
| INTERNAL AREA     | 118.53        | SQ.M.        | 1,275.84        | SQ.FT.        |
| EXTERNAL AREA     | 42.38         | SQ.M.        | 456.17          | SQ.FT.        |
| <b>TOTAL AREA</b> | <b>160.91</b> | <b>SQ.M.</b> | <b>1,732.01</b> | <b>SQ.FT.</b> |



**DISCLAIMER:**

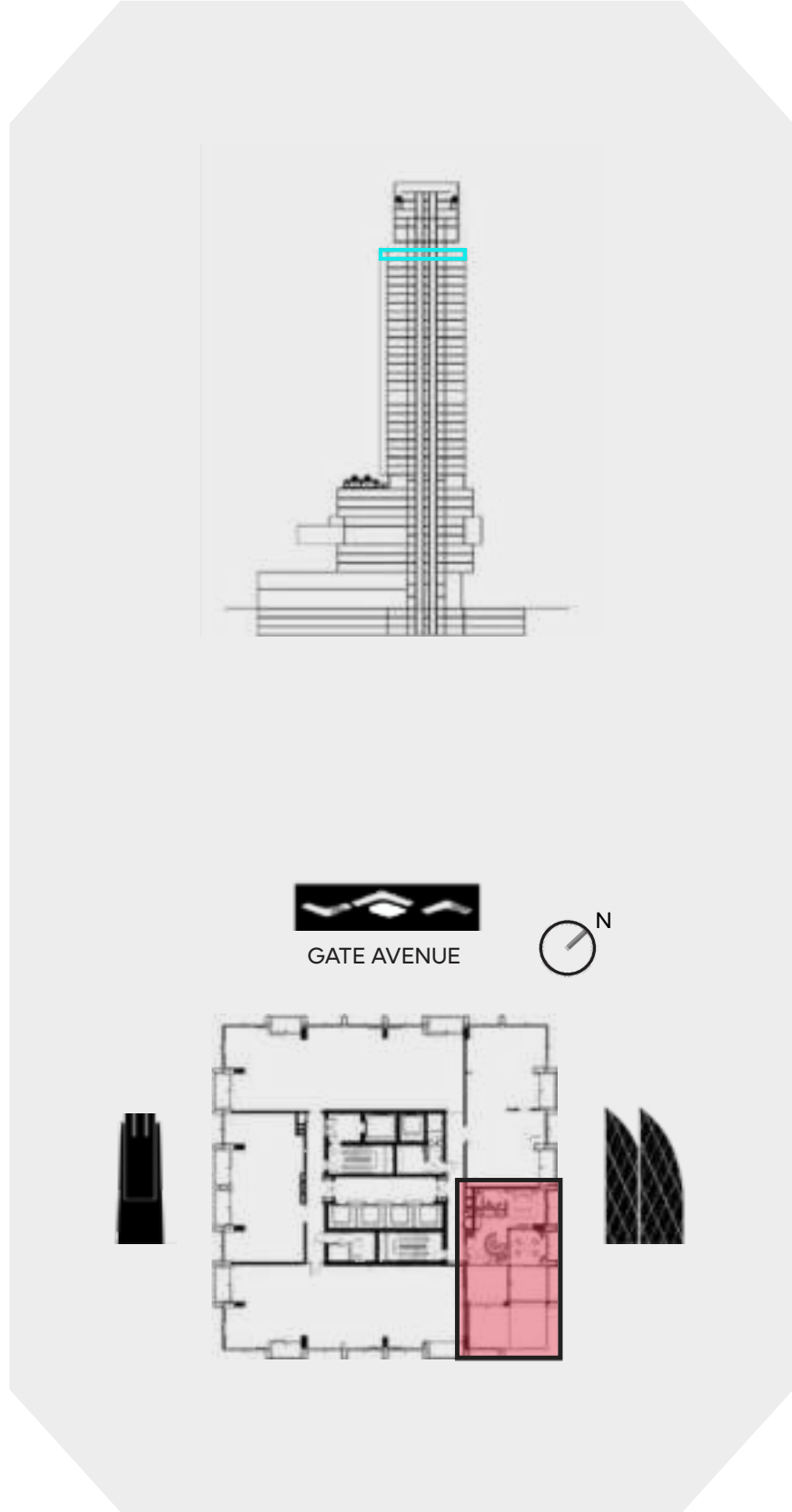
All measurements are indicative and are for marketing purposes only. All efforts have been made to ensure their accuracy, however these layouts are subject to change at the discretion of the developer and should not be relied upon as final. The actual area may vary from the stated area and the developer reserves the right to make the revisions/alterations, at its absolute discretion, without any liability whatsoever.

# EXECUTIVE 1 BEDROOM LOFT

UPPER LEVEL  
LEVEL 34

**UNIT AREA**

|                   |                     |                        |
|-------------------|---------------------|------------------------|
| INTERNAL AREA     | 118.53 SQ.M.        | 1,275.84 SQ.FT.        |
| EXTERNAL AREA     | 42.38 SQ.M.         | 456.17 SQ.FT.          |
| <b>TOTAL AREA</b> | <b>160.91 SQ.M.</b> | <b>1,732.01 SQ.FT.</b> |



**DISCLAIMER:**

All measurements are indicative and are for marketing purposes only. All efforts have been made to ensure their accuracy, however these layouts are subject to change at the discretion of the developer and should not be relied upon as final. The actual area may vary from the stated area and the developer reserves the right to make the revisions/alterations, at its absolute discretion, without any liability whatsoever.