



SHORELINE
BY *DAMAC*

FLOOR PLANS

AL MARJAN ISLAND

PRESENTING

SHORELINE

BY *DAMAC*

AL MARJAN ISLAND



5-BEDROOM TOWNHOUSE

A

	SQ MT	SQ FT
SALEABLE AREA	488.02	5253.00



LOWER FLOOR



UPPER FLOOR



LOWER FLOOR



UPPER FLOOR

5-BEDROOM TOWNHOUSE

A-M

	SQ MT	SQ FT
SALEABLE AREA	472.58	5086.81



LOWER FLOOR



UPPER FLOOR



LOWER FLOOR



UPPER FLOOR

4-BEDROOM TOWNHOUSE

A

	SQ MT	SQ FT
SALEABLE AREA	429.87	4627.08



LOWER FLOOR



UPPER FLOOR



LOWER FLOOR



UPPER FLOOR

4-BEDROOM TOWNHOUSE

A-M

	SQ MT	SQ FT
SALEABLE AREA	427.79	4604.69



LOWER FLOOR



UPPER FLOOR



LOWER FLOOR



UPPER FLOOR

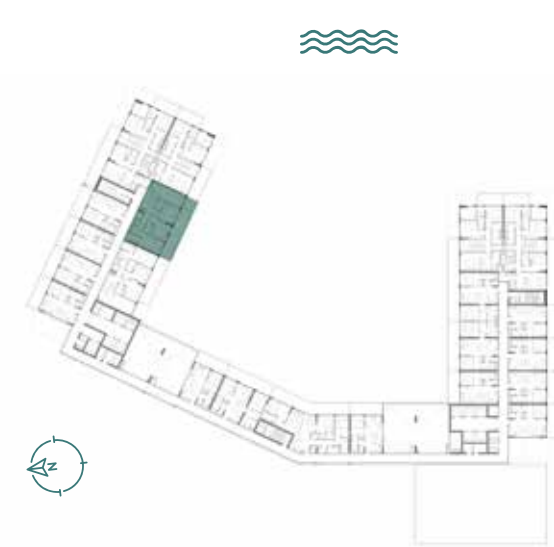
4-BEDROOM TOWNHOUSE

B

	SQ MT	SQ FT
SALEABLE AREA	300.58	3235.42



LOWER FLOOR



UPPER FLOOR



LOWER FLOOR



UPPER FLOOR

4-BEDROOM TOWNHOUSE

B-M

	SQ MT	SQ FT
SALEABLE AREA	294.31	3167.93



LOWER FLOOR



UPPER FLOOR



LOWER FLOOR



UPPER FLOOR

AL MARJAN ISLAND

3-BEDROOM APARTMENT

A1

	SQ MT	SQ FT
SALEABLE AREA	192.99	2077.33



LEVELS: 6-9,15,16



3-BEDROOM APARTMENT

A1-M

	SQ MT	SQ FT
SALEABLE AREA	192.98	2077.22



LEVELS: 2-4,11-13



AL MARJAN ISLAND

3-BEDROOM APARTMENT

A2

	SQ MT	SQ FT
SALEABLE AREA	192.99	2077.33



LEVELS: 2-5, 10-14



3-BEDROOM APARTMENT

A 2-M

	SQ MT	SQ FT
SALEABLE AREA	192.98	2077.22



LEVELS: 5-10, 14-16



3-BEDROOM APARTMENT

B1

	SQ MT	SQ FT
SALEABLE AREA	182.89 - 183.04	1968.61 - 1970.23



LEVEL: 1



LEVELS: 5-10, 14-16



3-BEDROOM APARTMENT

B2

	SQ MT	SQ FT
SALEABLE AREA	183.02	1970.01



LEVELS: 2-4, 11-13



2-BEDROOM APARTMENT

A1

	SQ MT	SQ FT
SALEABLE AREA	115.36 - 115.89	1241.72 - 1247.43



2-BEDROOM APARTMENT

A1-M

	SQ MT	SQ FT
SALEABLE AREA	115.63 - 115.64	1244.63 - 1244.74



2-BEDROOM APARTMENT

A2

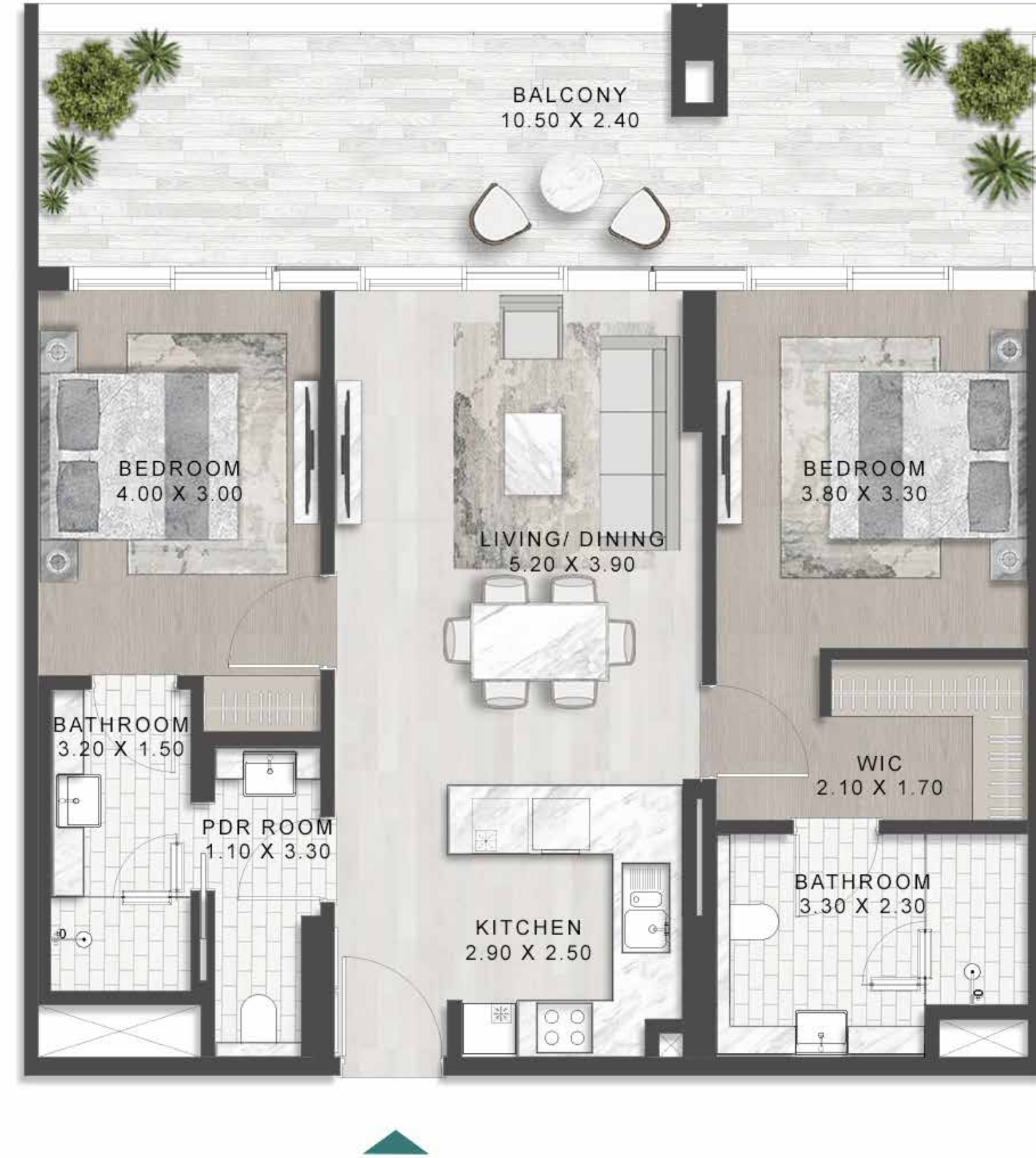
	SQ MT	SQ FT
SALEABLE AREA	115.64 - 115.89	1244.74 - 1247.43



LEVELS: 2-4, 11-13



LEVELS: 6-9, 15,16



2-BEDROOM APARTMENT

A 2-M

	SQ MT	SQ FT
SALEABLE AREA	115.63	1244.63



LEVELS: 2-4, 11-13



2-BEDROOM APARTMENT

A3

	SQ MT	SQ FT
SALEABLE AREA	115.36 - 115.64	1241.72 - 1244.74



LEVELS: 2-4, 11-13



LEVELS: 6-9, 15,16



2-BEDROOM APARTMENT

A3-M

	SQ MT	SQ FT
SALEABLE AREA	115.64	1244.74



LEVELS: 6-9, 15,16



2-BEDROOM APARTMENT

A4

	SQ MT	SQ FT
SALEABLE AREA	115.64	1244.74



LEVELS: 2-4, 11-13



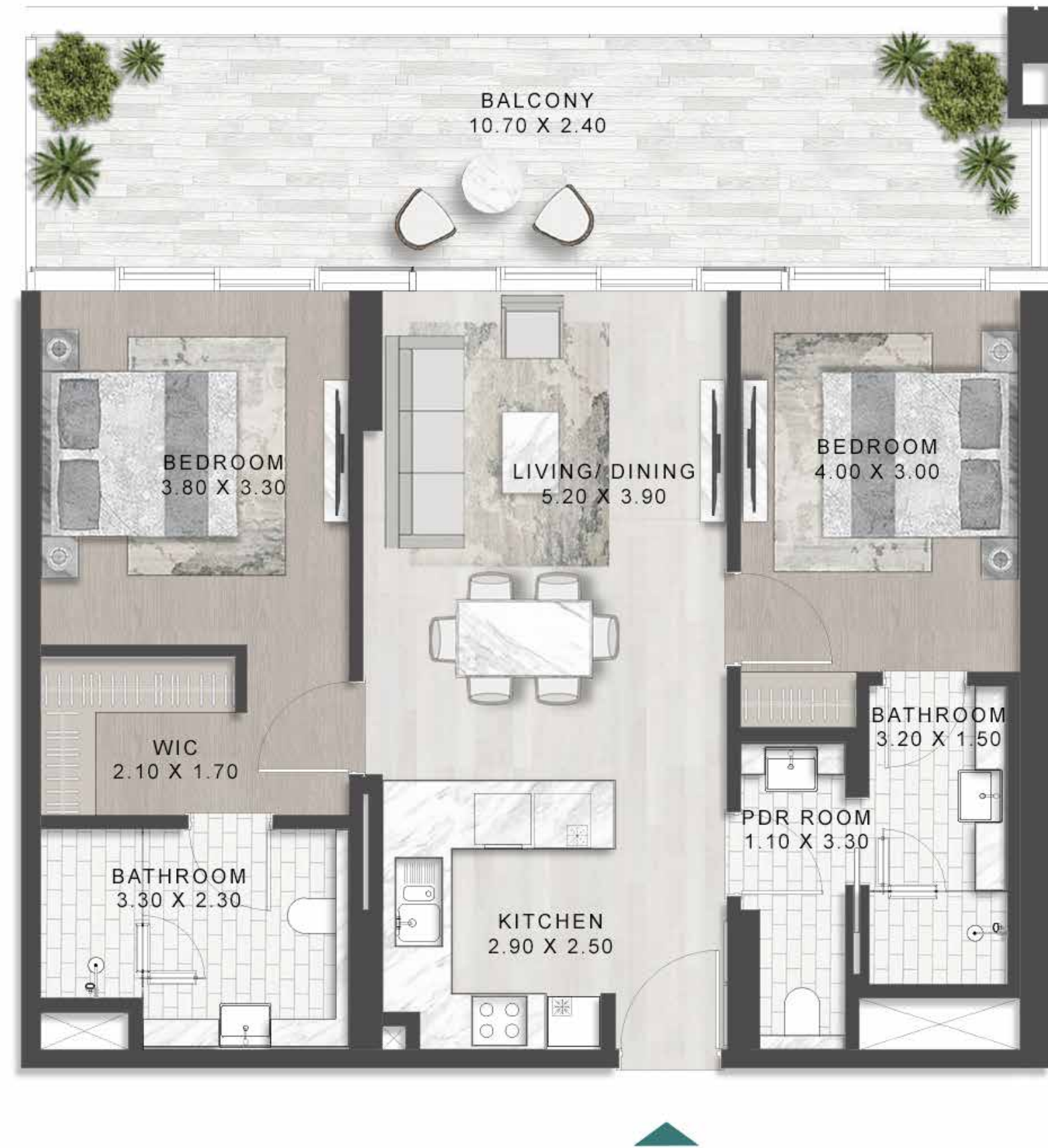
2-BEDROOM APARTMENT

A 4-M

	SQ MT	SQ FT
SALEABLE AREA	115.63	1244.63



LEVELS: 6-9, 15,16



2-BEDROOM APARTMENT

B

	SQ MT	SQ FT
SALEABLE AREA	154.31	1660.98



LEVELS: 2-16



2-BEDROOM APARTMENT

B-M

	SQ MT	SQ FT
SALEABLE AREA	154.32	1661.09



LEVELS: 2-16



2-BEDROOM APARTMENT

C1

	SQ MT	SQ FT
SALEABLE AREA	126.49	1361.53



LEVELS: 2-5, 10-14



2-BEDROOM APARTMENT

C 2

	SQ MT	SQ FT
SALEABLE AREA	126.49	1361.53



LEVELS: 6-9, 15,16



1-BEDROOM APARTMENT

A1

	SQ MT	SQ FT
SALEABLE AREA	75.39 - 77.80	811.49 - 837.43



1-BEDROOM APARTMENT

A1-M

	SQ MT	SQ FT
SALEABLE AREA	75.39 - 78.10	811.49 - 840.66



LEVEL: 1



LEVELS: 2-4, 11-13



LEVELS: 5,10,14



LEVELS: 6-9, 15,16



1-BEDROOM APARTMENT

A2

	SQ MT	SQ FT
SALEABLE AREA	75.39 - 76.98	811.49 - 828.61



1-BEDROOM APARTMENT

A 2-M

	SQ MT	SQ FT
SALEABLE AREA	75.39 - 76.98	811.49 - 828.61



AL MARJAN ISLAND

1-BEDROOM APARTMENT

A3

	SQ MT	SQ FT
SALEABLE AREA	76.98	828.61



LEVELS: 2-4, 11-13



AL MARJAN ISLAND

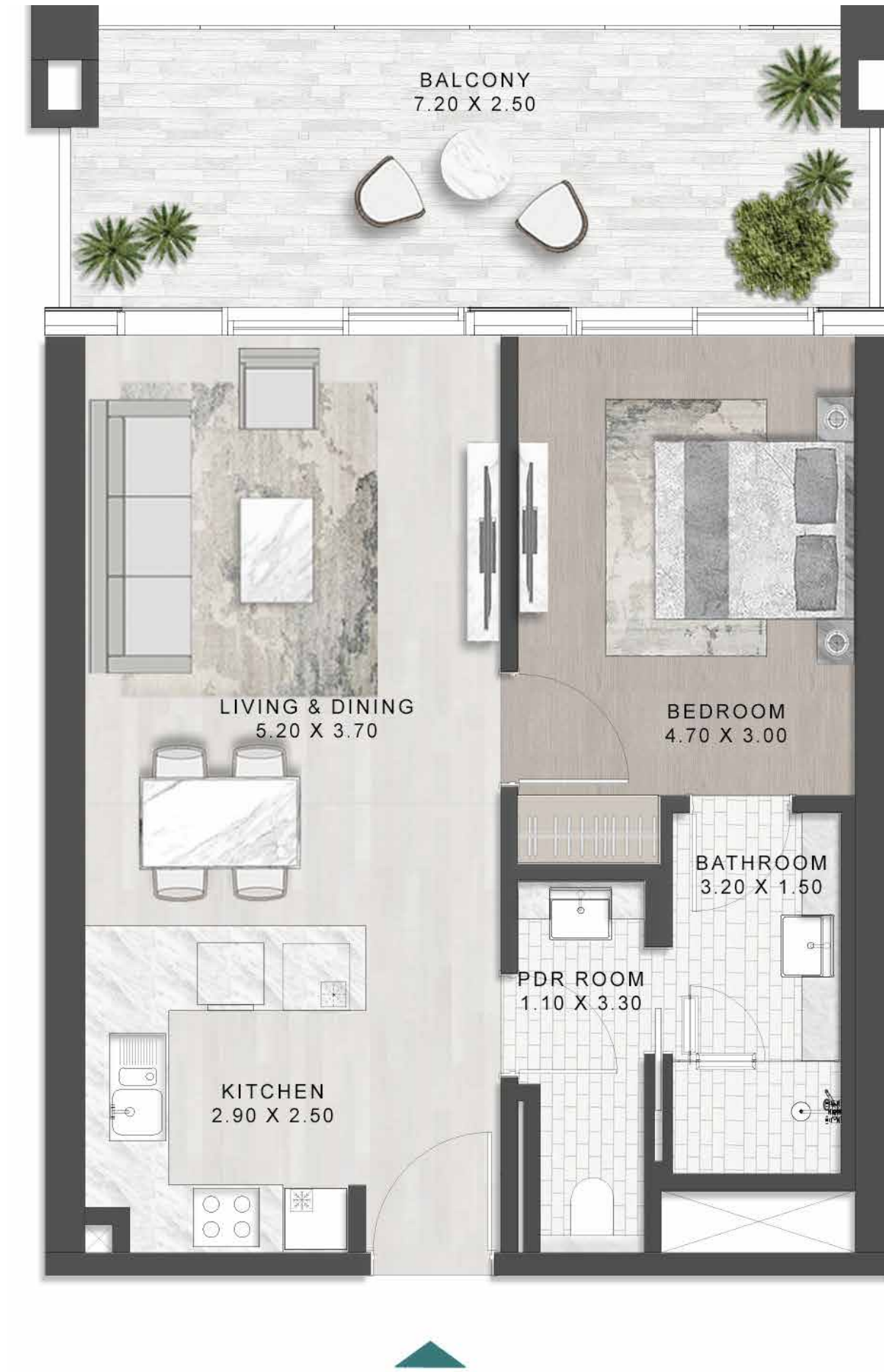
1-BEDROOM APARTMENT

A3-M

	SQ MT	SQ FT
SALEABLE AREA	76.98	828.61



LEVELS: 6-9, 15,16



AL MARJAN ISLAND

1-BEDROOM APARTMENT

A4

	SQ MT	SQ FT
SALEABLE AREA	75.39 - 77.24	811.49 - 831.40



LEVELS: 6-9, 15,16



AL MARJAN ISLAND

1-BEDROOM APARTMENT

A 4-M

	SQ MT	SQ FT
SALEABLE AREA	75.39 - 77.21	811.49 - 831.08



LEVELS: 2-4, 11-13



AL MARJAN ISLAND

1-BEDROOM APARTMENT

B1

	SQ MT	SQ FT
SALEABLE AREA	89.14	959.49



LEVELS: 6-9, 15,16



AL MARJAN ISLAND

1-BEDROOM APARTMENT

B 1 - M

	SQ MT	SQ FT
SALEABLE AREA	89.14	959.49



LEVELS: 2-4, 11-13



AL MARJAN ISLAND

1-BEDROOM APARTMENT

B2

	SQ MT	SQ FT
SALEABLE AREA	89.14	959.49



LEVELS: 2-5, 10-14



AL MARJAN ISLAND

1-BEDROOM APARTMENT

B 2-M

	SQ MT	SQ FT
SALEABLE AREA	89.14	959.49



LEVELS: 5-10, 14-16



DAMAC