



BAYGROVE  
RESIDENCES

DUBAI ISLANDS

F L O O R P L A T E S

**NAKHEEL**

# Floor Plate

Ground Level

- 1 Bedroom
- 2 Bedrooms
- 2 Bedrooms + Maid
- 3 Bedrooms
- Lobby
- Residents Facilities



# Floor Plate

Level 1

-  1 Bedroom
-  2 Bedrooms
-  2 Bedrooms + Maid
-  3 Bedrooms
-  Lobby
-  Amenities



# Floor Plate

Typical Levels 2 - 4




**BAYGROVE**  
RESIDENCES  
DUBAI ISLANDS

- 1 Bedroom
- 2 Bedrooms
- 2 Bedrooms + Maid
- 3 Bedrooms
- Lobby



# Floor Plate

Level 5

-  1 Bedroom
-  2 Bedrooms
-  2 Bedrooms + Maid
-  3 Bedrooms
-  Lobby



# Floor Plate

Level 6

- 1 Bedroom
- 2 Bedrooms
- 2 Bedrooms + Maid
- 3 Bedrooms
- 4 Bedrooms
- Lobby



# Floor Plate

Level 7

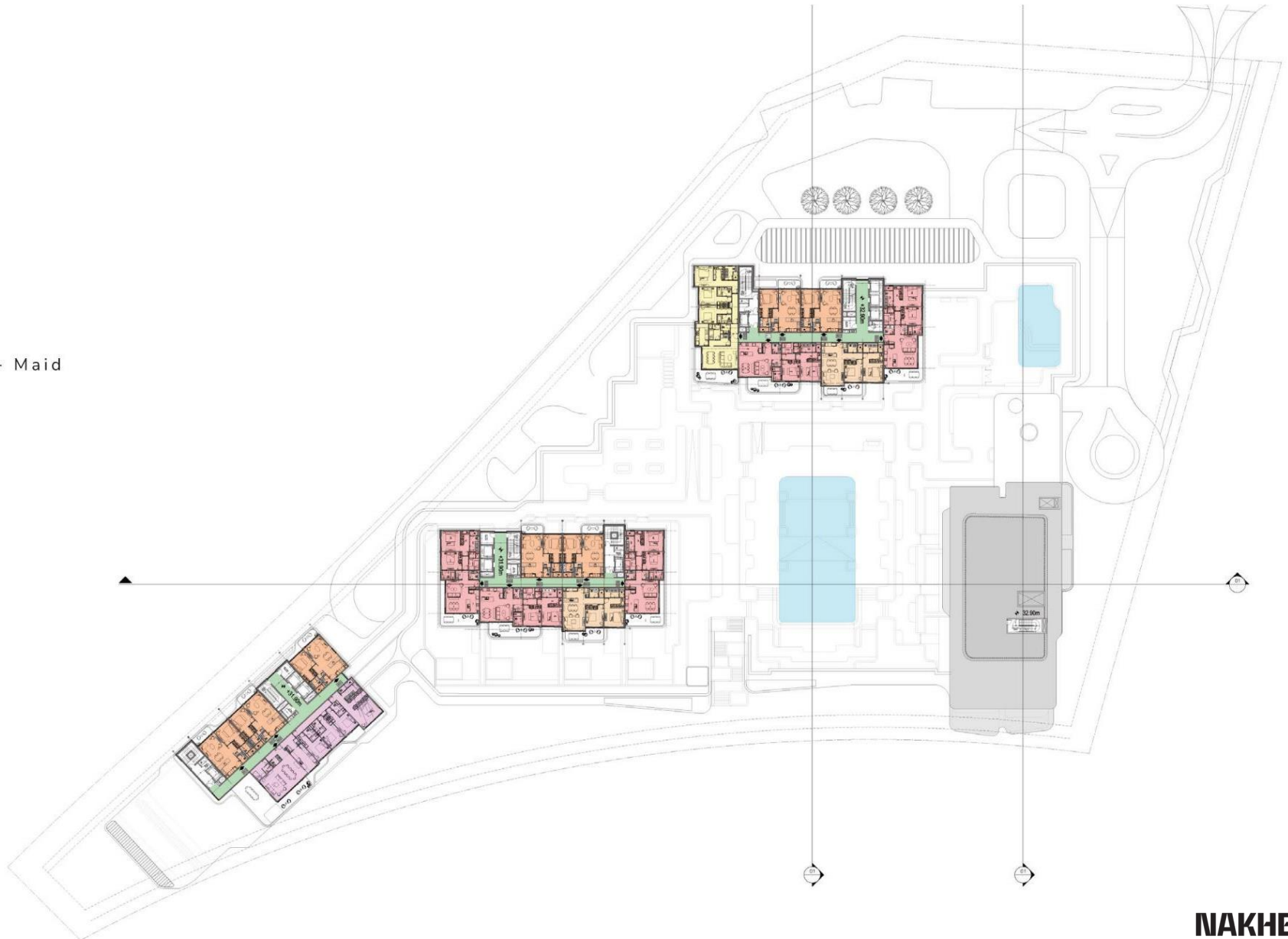
- 1 Bedroom
- 2 Bedrooms
- 2 Bedrooms + Maid
- 3 Bedrooms
- 4 Bedrooms
- Lobby



# Floor Plate

Level 8

- 1 Bedroom
- 2 Bedrooms
- 2 Bedrooms + Maid
- 3 Bedrooms
- 4 Bedrooms
- Lobby

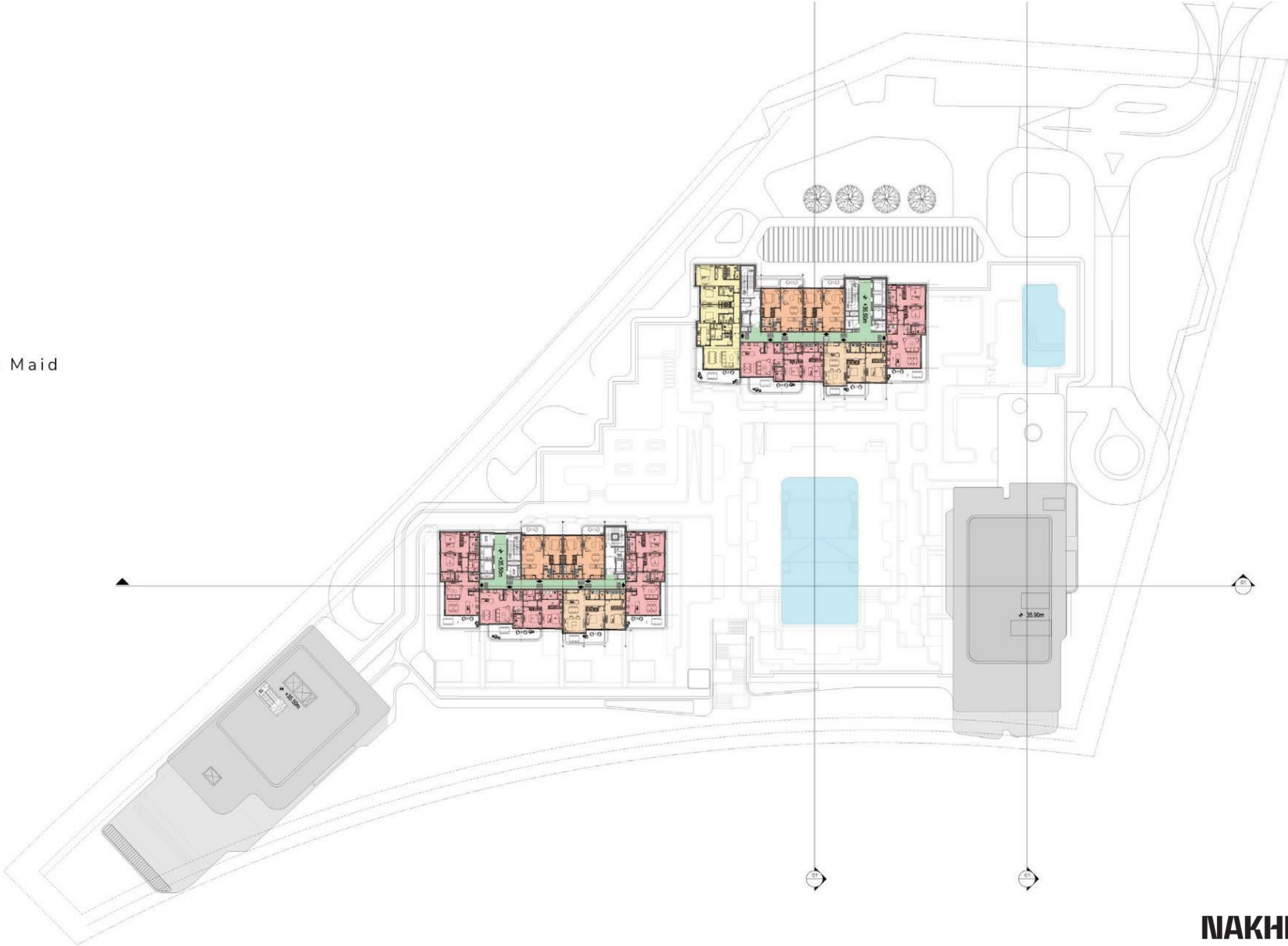




# Floor Plate

Typical Levels 9 - 12

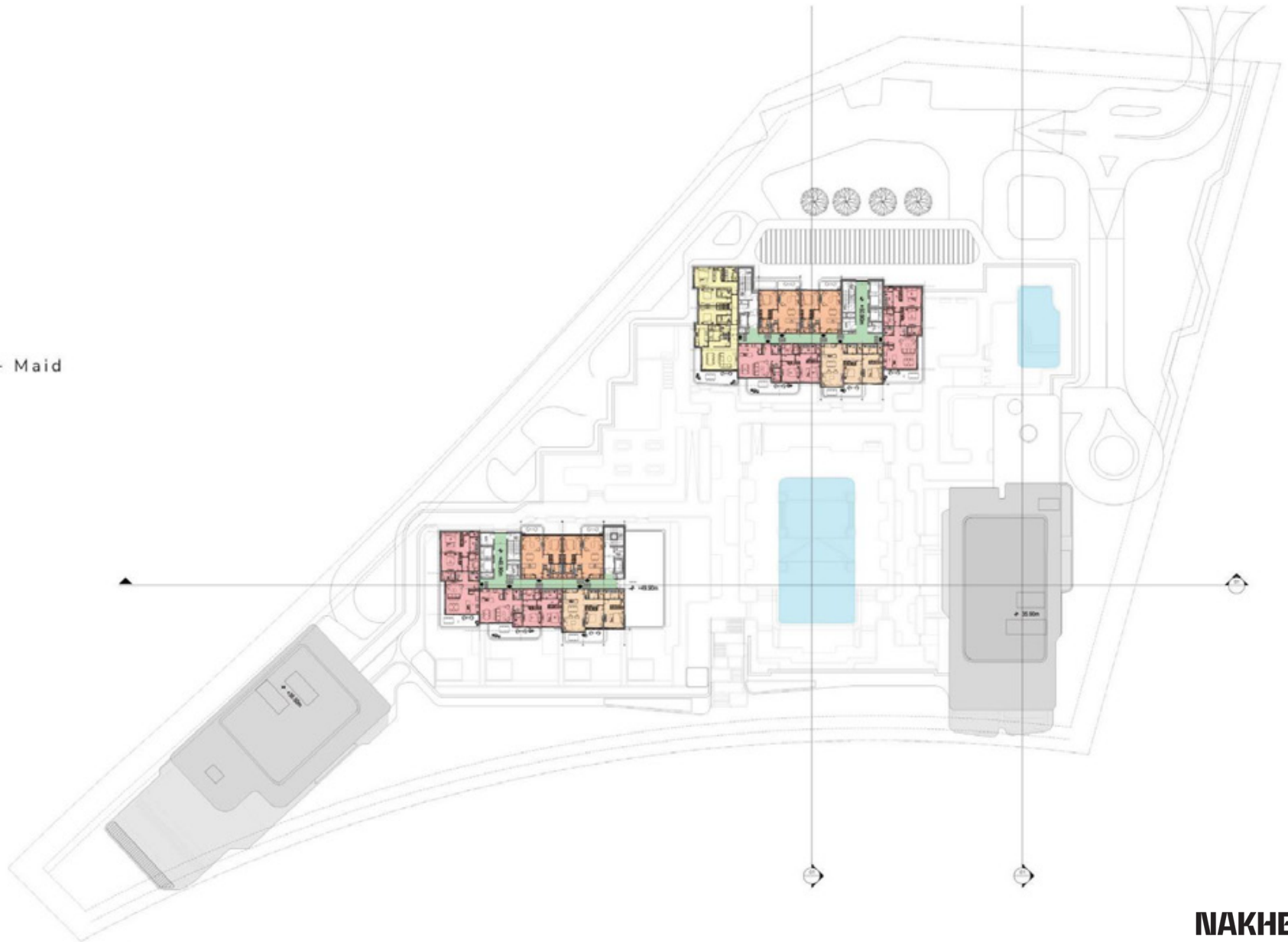
- 1 Bedroom
- 2 Bedrooms
- 2 Bedrooms + Maid
- 3 Bedrooms
- Lobby



# Floor Plate

Level 13

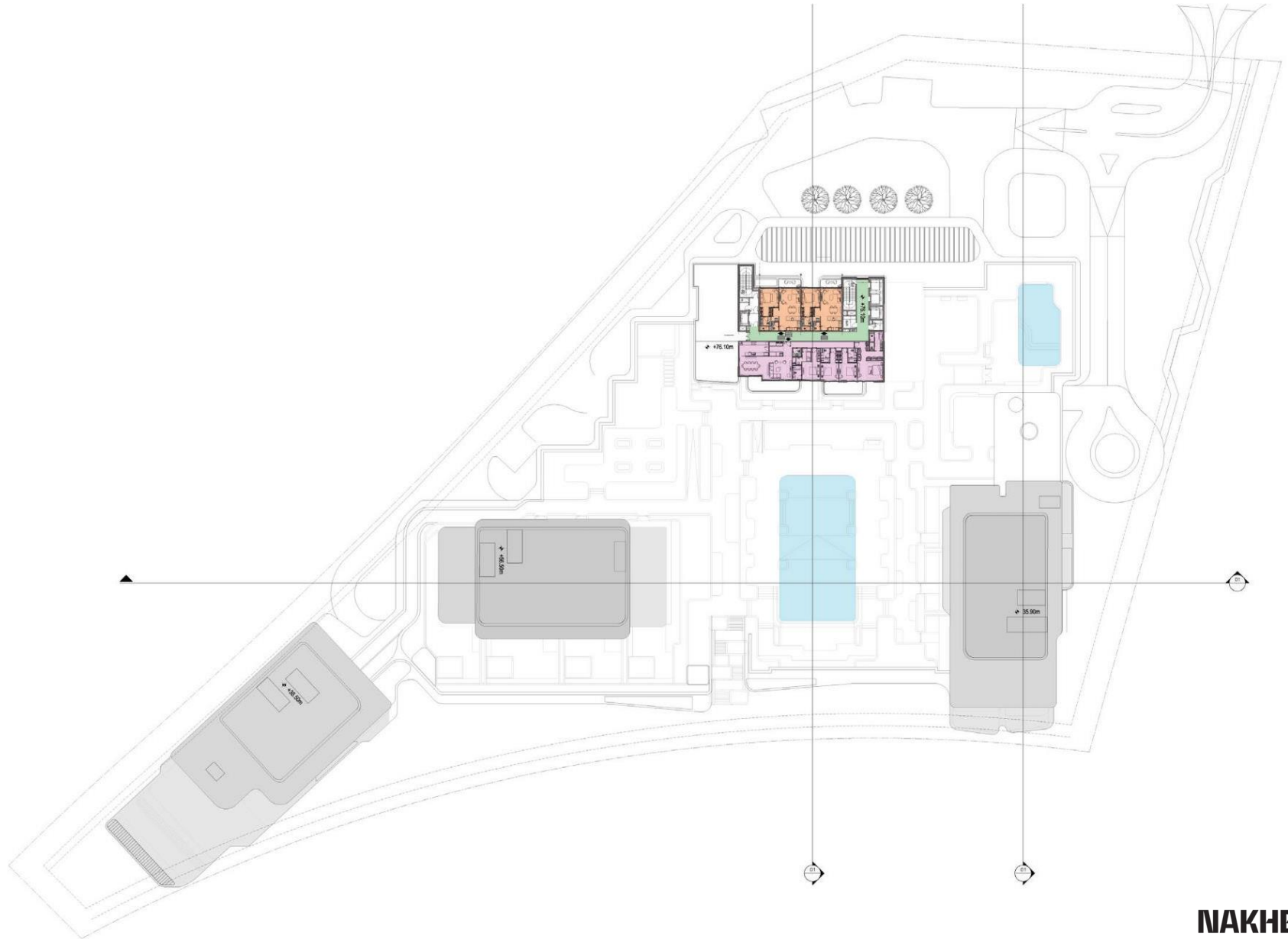
- 1 Bedroom
- 2 Bedrooms
- 2 Bedrooms + Maid
- 3 Bedrooms
- Lobby



# Floor Plate

Level 20

- 1 Bedroom
- 4 Bedrooms
- Lobby



The background of the image is a close-up, high-angle shot of teal-colored water. The surface is covered in intricate, concentric ripples that create a sense of movement and depth. Light reflects off the peaks of the ripples, creating bright, shimmering highlights, while the troughs are in shadow, giving the water a three-dimensional appearance. The overall color palette is a range of blues and greens, from light, airy tones to deeper, more saturated hues.

**NAKHEEL**