

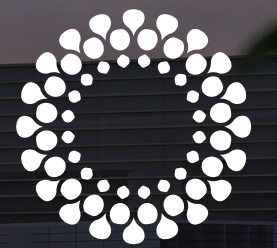
سدر ريزيدنسز

SIDR RESIDENCES

FLOOR PLANS

Live in the new centre of Dubai's future

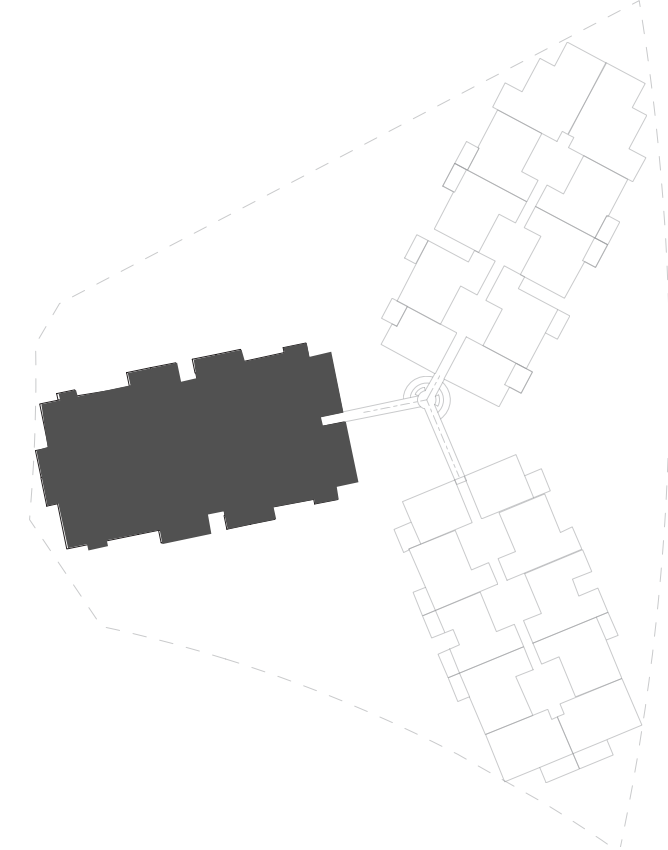
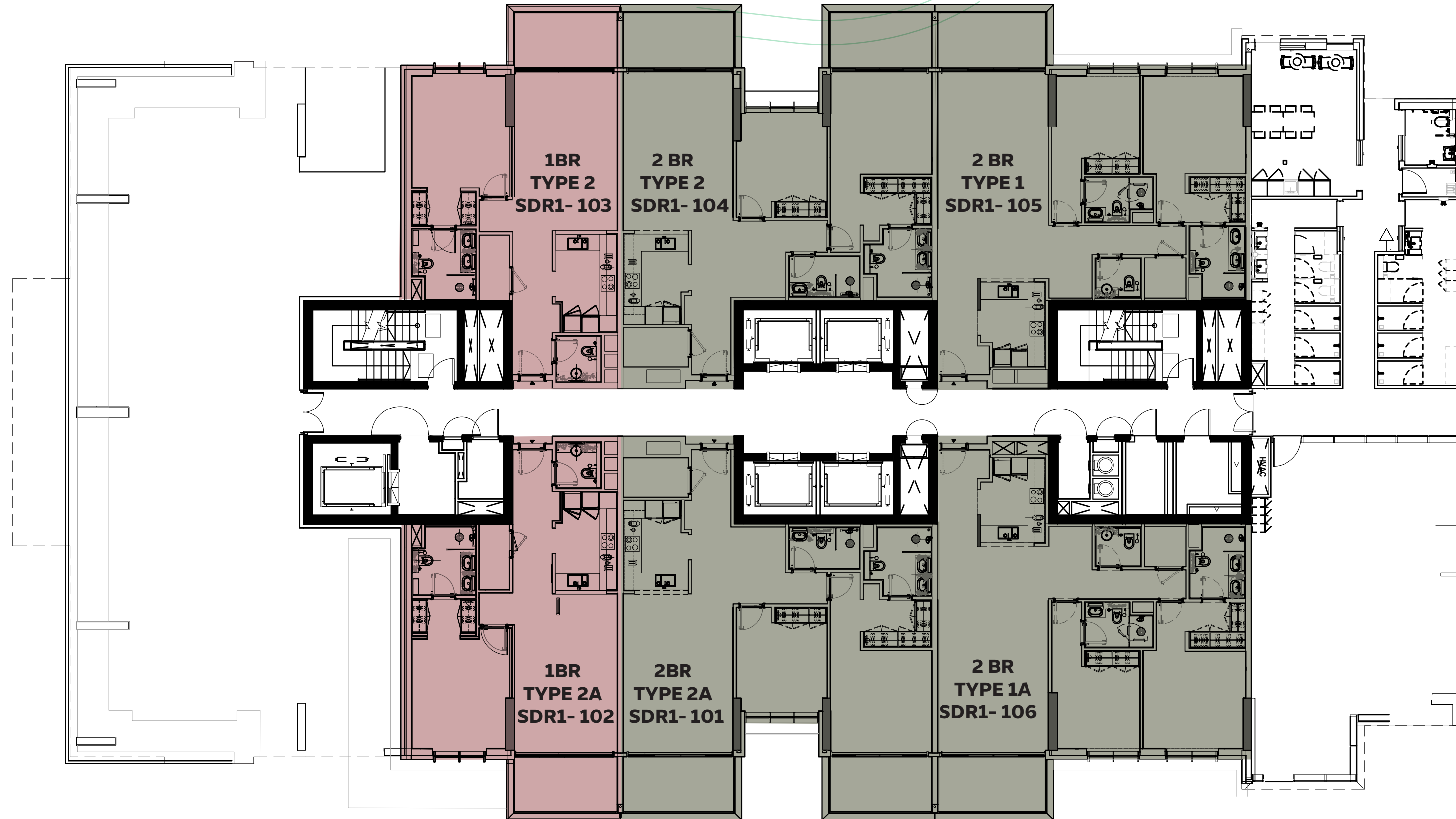
من تطوير
DEVELOPED BY



مدينة إكسبو دبي
EXPO CITY DUBAI

Sidr Residences 1 - floor plans

سدر ريزيدنسز
SIDR RESIDENCES



SIDR RESIDENCES 1 1ST FLOOR

- 1BR TYPE 2 / TYPE 2A
- 2BR TYPE 1 / TYPE 1A
2BR TYPE 2 / TYPE 2A

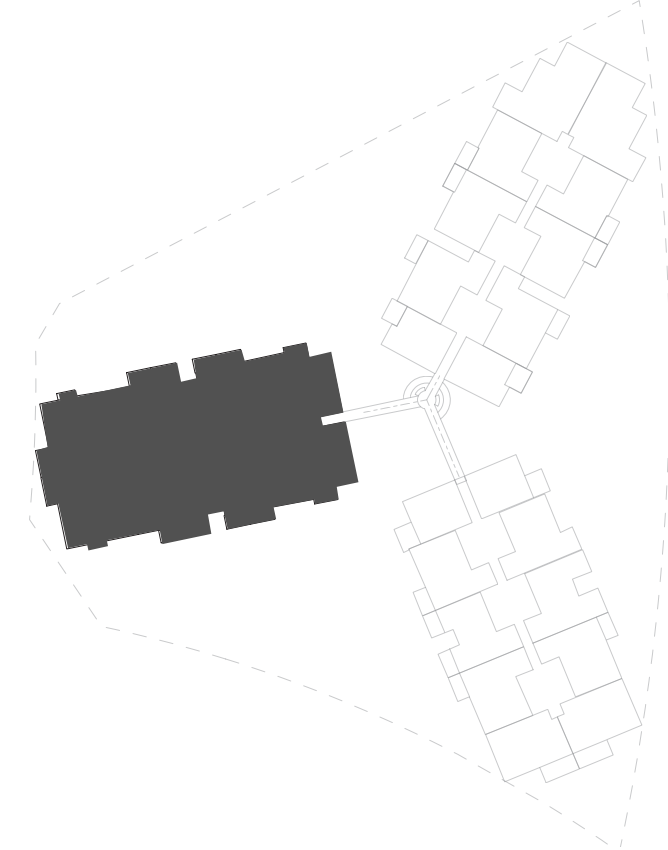
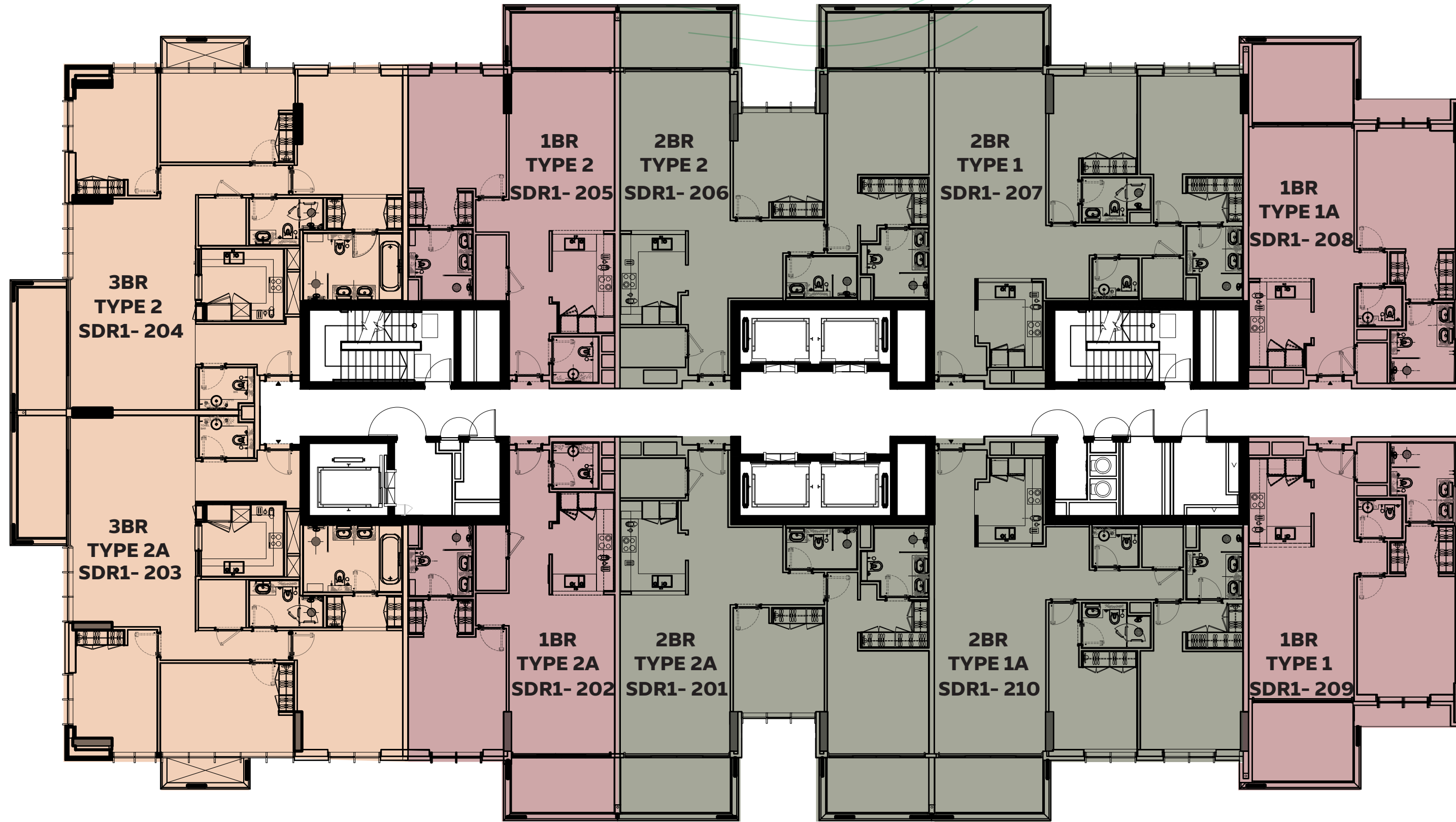
DEVELOPED BY



1. All room dimensions are in metric and measured to structural elements, and exclude wall finishes and construction tolerances. 2. All dimensions have been provided by our consultant architects. 3. All materials, dimensions, drawings, features and amenities, are approximate at the time of printing. 4. Actual area may vary from stated area. 5. Drawings are not to scale E&OE. 6. The developer reserves the right to make revisions to the floor plans and any features, materials, dimensions, drawings, and amenities mentioned on this plan and in the brochure without notice. 7. Unit plans may exist in mirrored version.

Sidr Residences 1 - floor plans

سدر ریزیدنسز
SIDR RESIDENCES



SIDR RESIDENCES 1
TYPICAL FLOORS
FROM 2ND TO 15TH FLOOR

- 1BR TYPE 1 / TYPE 1A
1BR TYPE 2 / TYPE 2A
- 2BR TYPE 1 / TYPE 1A
2BR TYPE 2 / TYPE 2A
- 3BR TYPE 2 / TYPE 2A

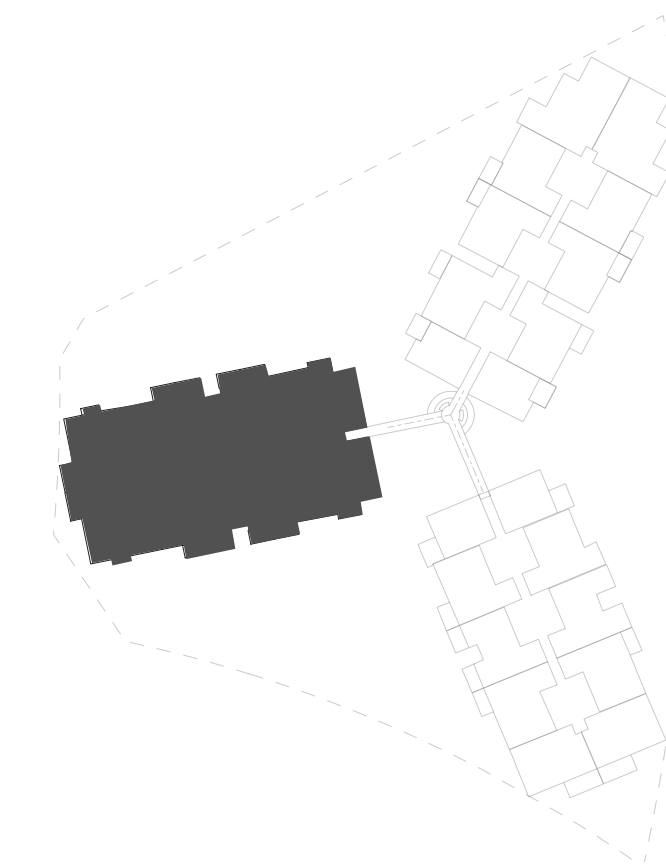
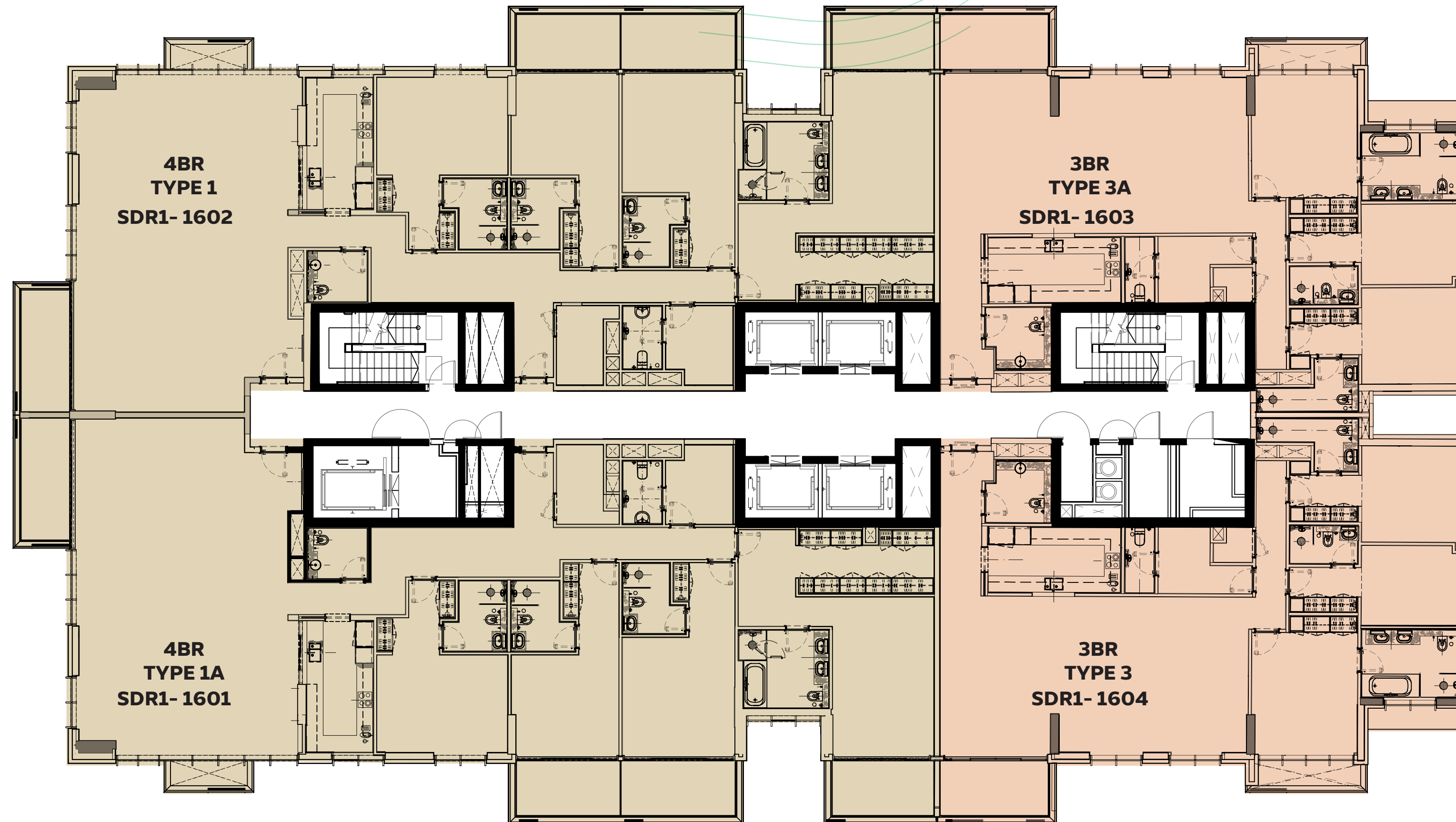
DEVELOPED BY



1. All room dimensions are in metric and measured to structural elements, and exclude wall finishes and construction tolerances. 2. All dimensions have been provided by our consultant architects. 3. All materials, dimensions, drawings, features and amenities, are approximate at the time of printing. 4. Actual area may vary from stated area. 5. Drawings are not to scale E&OE. 6. The developer reserves the right to make revisions to the floor plans and any features, materials, dimensions, drawings, and amenities mentioned on this plan and in the brochure without notice. 7. Unit plans may exist in mirrored version.

Sidr Residences 1 - floor plans

سدر ریزیدنسز
SIDR RESIDENCES



SIDR RESIDENCES 1
16TH FLOOR

- 3BR TYPE 3 / TYPE 3A
- 4BR TYPE 1 / TYPE 1A

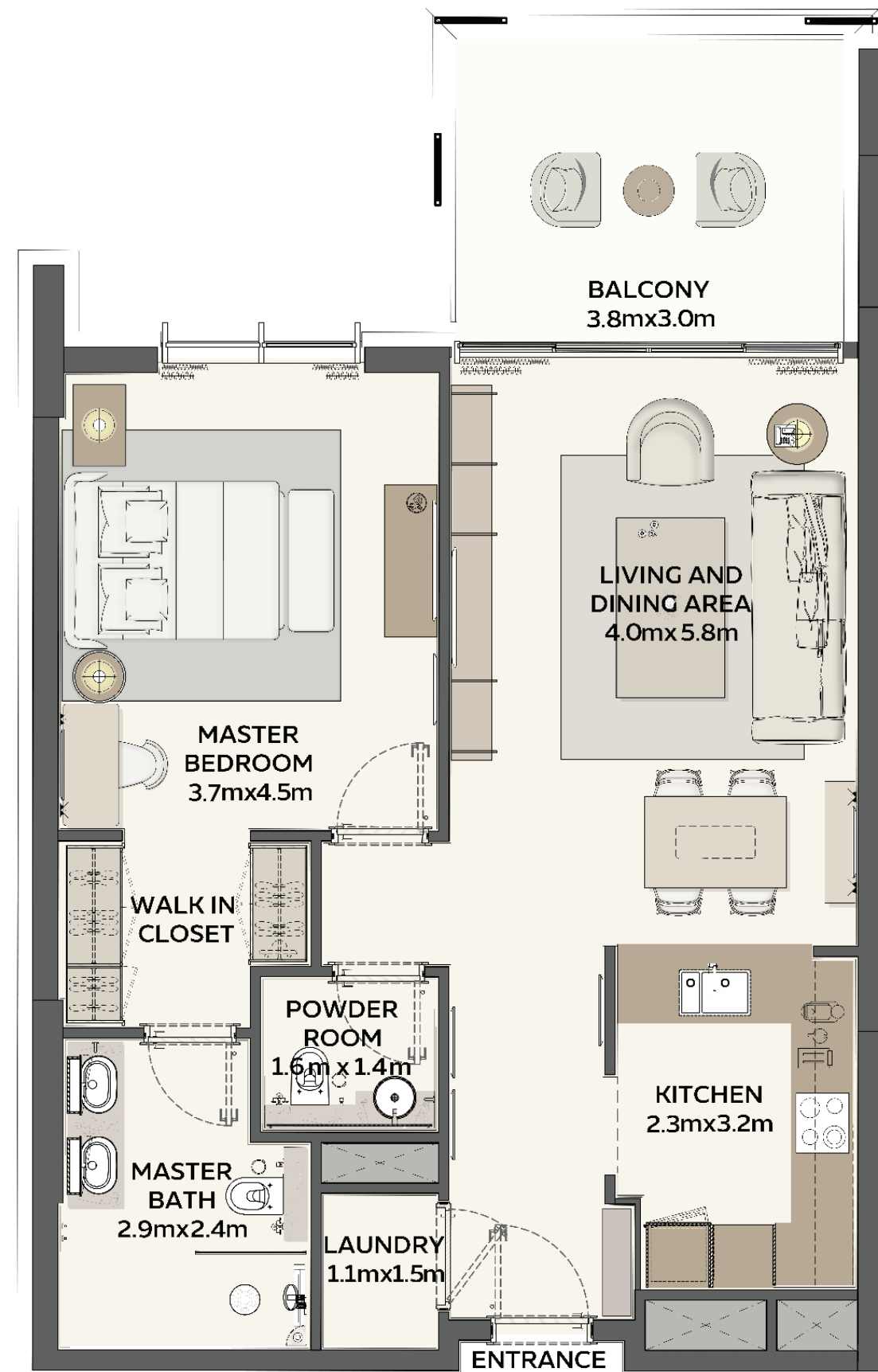


DEVELOPED BY

1. All room dimensions are in metric and measured to structural elements, and exclude wall finishes and construction tolerances. 2. All dimensions have been provided by our consultant architects. 3. All materials, dimensions, drawings, features and amenities, are approximate at the time of printing. 4. Actual area may vary from stated area. 5. Drawings are not to scale E&OE. 6. The developer reserves the right to make revisions to the floor plans and any features, materials, dimensions, drawings, and amenities mentioned on this plan and in the brochure without notice. 7. Unit plans may exist in mirrored version.

Sidr Residences 1 - unit plans

سدر ريزيدنسز
SIDR RESIDENCES

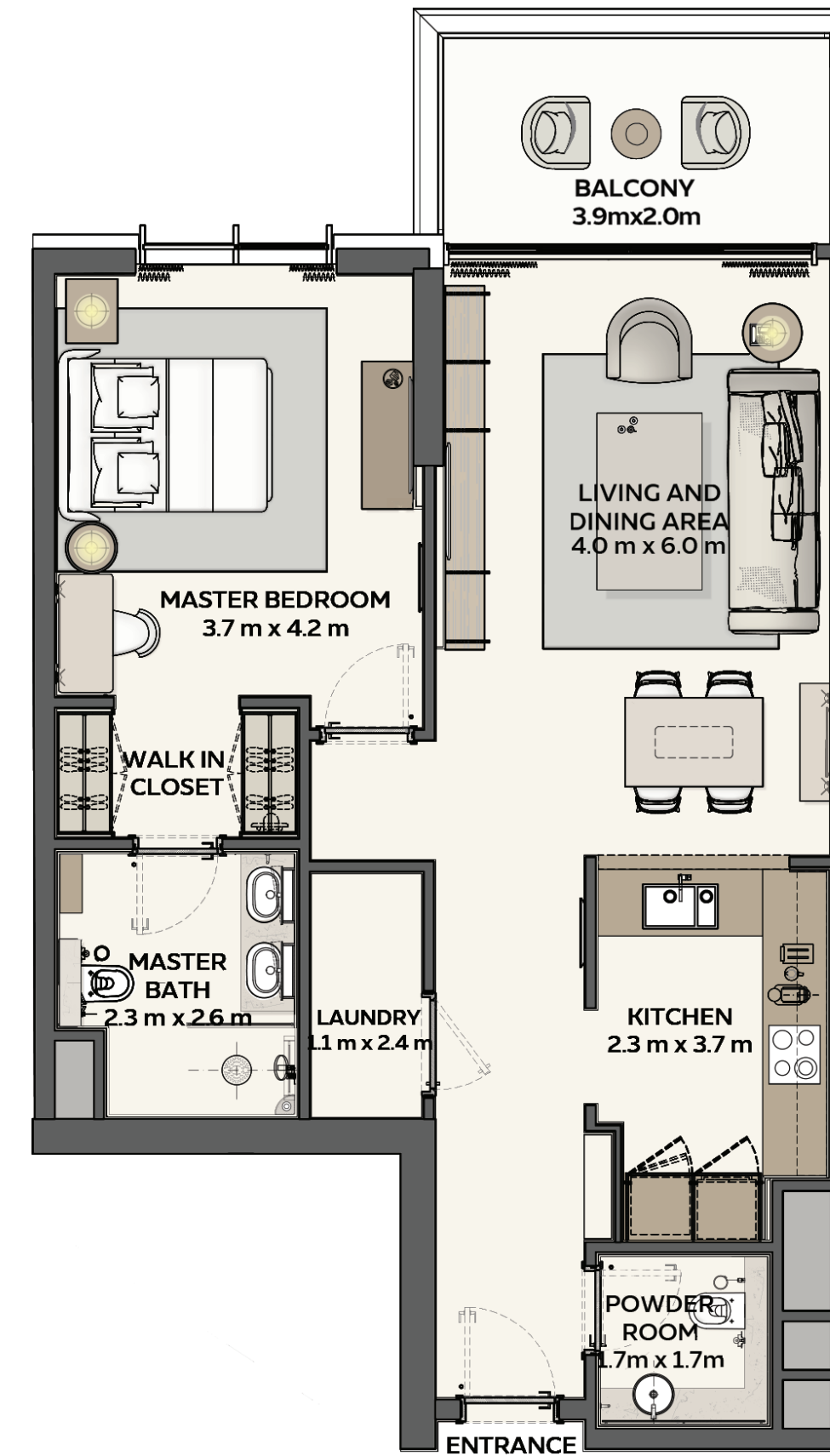


1 BEDROOM TYPE 1

Net Area starting from:
78.74 sqm / 847.55 sqft

Balcony Area starting from:
12.65 sqm / 136.16 sqft

Total Area starting from:
91.39 sqm / 983.71 sqft



1 BEDROOM TYPE 2

Net Area starting from:
83.30 sqm / 896.63 sqft

Balcony Area starting from:
8.86 sqm / 95.37 sqft

Total Area starting from:
92.16 sqm / 992.00 sqft

DEVELOPED BY



1. All room dimensions are in metric and measured to structural elements, and exclude wall finishes and construction tolerances. 2. All dimensions have been provided by our consultant architects. 3. All materials, dimensions, drawings, features and amenities, are approximate at the time of printing. 4. Actual area may vary from stated area. 5. Drawings are not to scale E&OE. 6. The developer reserves the right to make revisions to the floor plans and any features, materials, dimensions, drawings, and amenities mentioned on this plan and in the brochure without notice. 7. Unit plans may exist in mirrored version.

Sidr Residences 1 - unit plans

سدر ريزيدنسز
SIDR RESIDENCES



2 BEDROOM TYPE 1

Net Area starting from:
118.70 sqm / 1277.68 sqft

Balcony Area starting from:
9.28 sqm / 99.89 sqft

Total Area starting from:
127.98 sqm / 1377.57 sqft

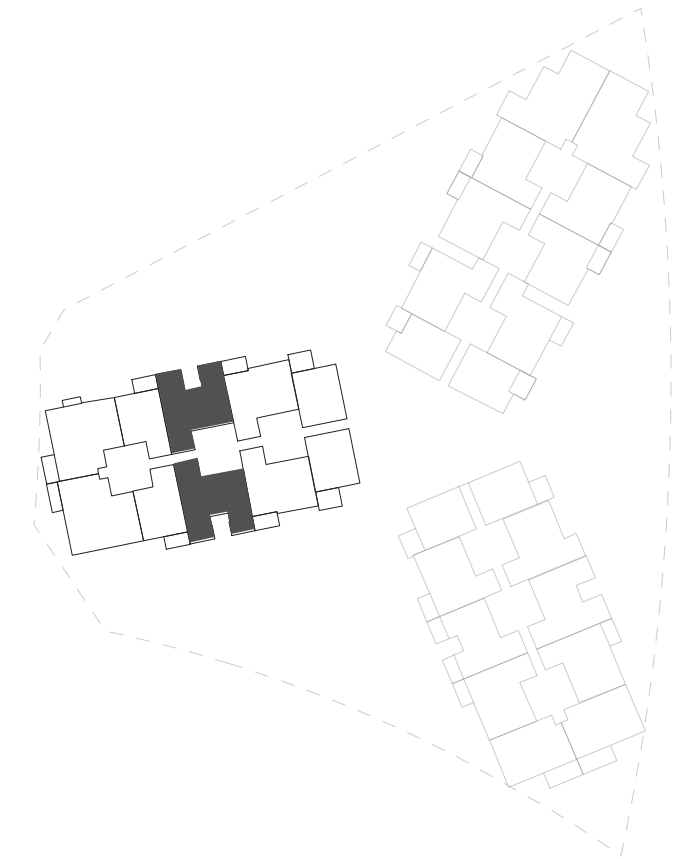
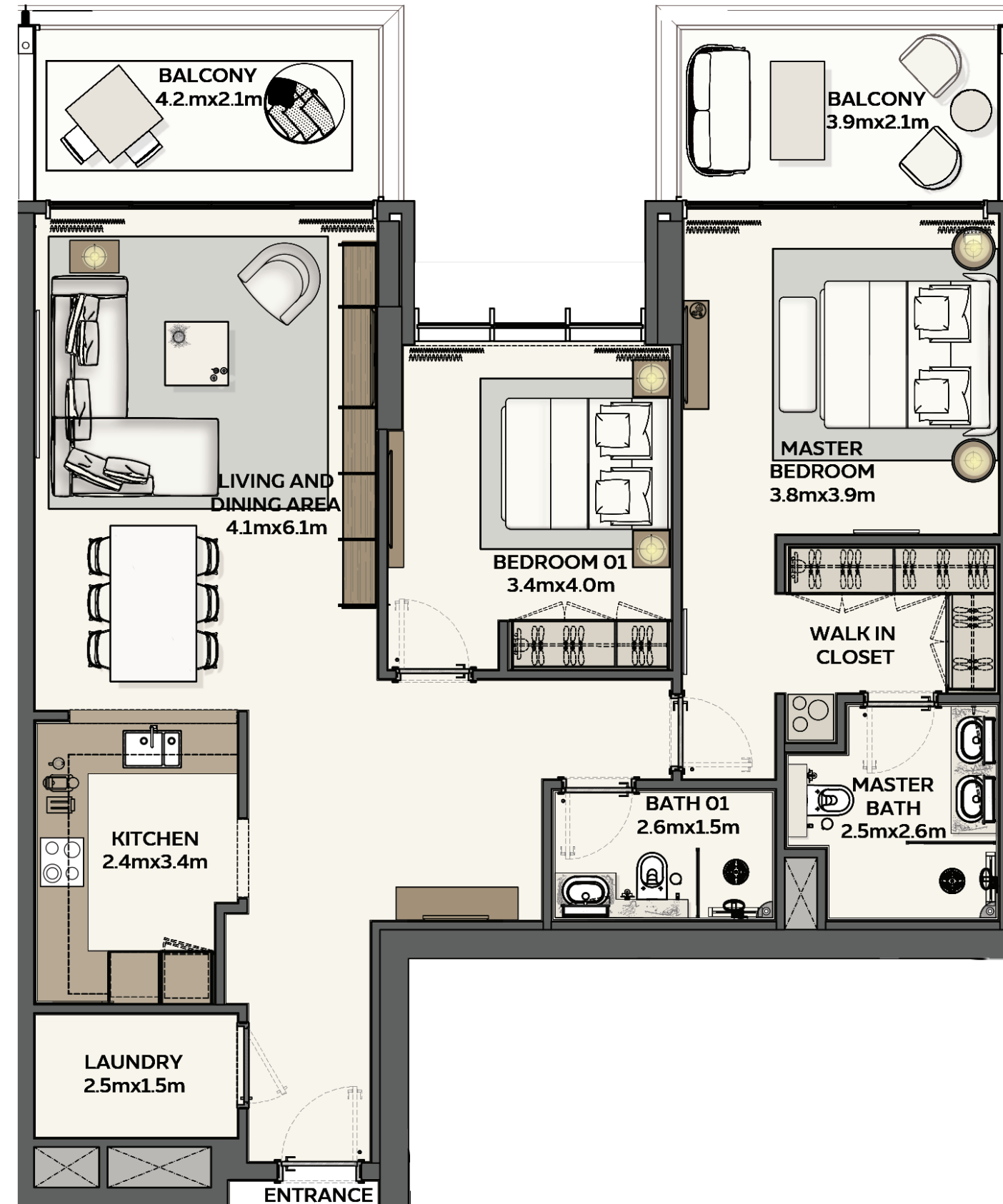
DEVELOPED BY



1. All room dimensions are in metric and measured to structural elements, and exclude wall finishes and construction tolerances. 2. All dimensions have been provided by our consultant architects. 3. All materials, dimensions, drawings, features and amenities, are approximate at the time of printing. 4. Actual area may vary from stated area. 5. Drawings are not to scale E&OE. 6. The developer reserves the right to make revisions to the floor plans and any features, materials, dimensions, drawings, and amenities mentioned on this plan and in the brochure without notice. 7. Unit plans may exist in mirrored version.

Sidr Residences 1 - unit plans

سدر ريزيدنسز
SIDR RESIDENCES



2 BEDROOM TYPE 2

Net Area starting from:
114.26 sqm / 1229.88 sqft

Balcony Area starting from:
18.19 sqm / 195.80 sqft

Total Area starting from:
132.45 sqm / 1425.68 sqft

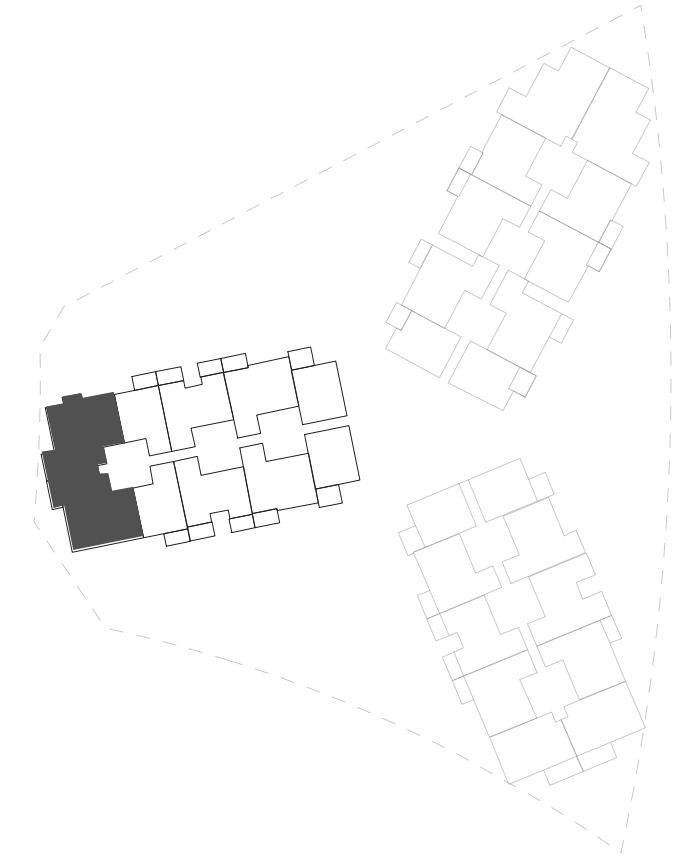
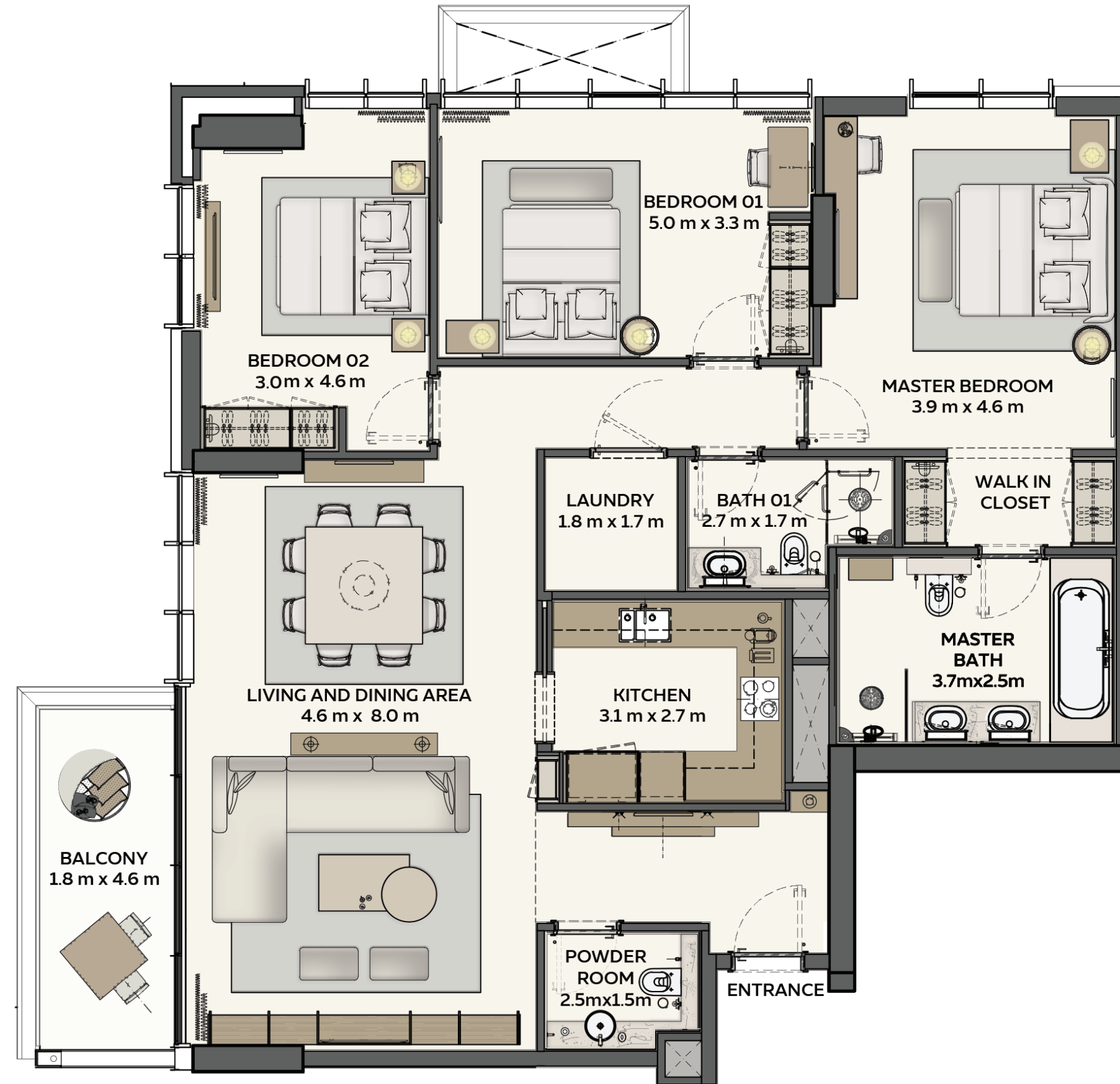
DEVELOPED BY



1. All room dimensions are in metric and measured to structural elements, and exclude wall finishes and construction tolerances. 2. All dimensions have been provided by our consultant architects. 3. All materials, dimensions, drawings, features and amenities, are approximate at the time of printing. 4. Actual area may vary from stated area. 5. Drawings are not to scale E&OE. 6. The developer reserves the right to make revisions to the floor plans and any features, materials, dimensions, drawings, and amenities mentioned on this plan and in the brochure without notice. 7. Unit plans may exist in mirrored version.

Sidr Residences 1 - unit plans

سدر ريزيدنسز
SIDR RESIDENCES



3 BEDROOM TYPE 2

Net Area starting from:
148.26 sqm / 1595.86 sqft

Balcony Area starting from:
9.22 sqm / 99.24 sqft

Total Area starting from:
157.48 sqm / 1695.10 sqft

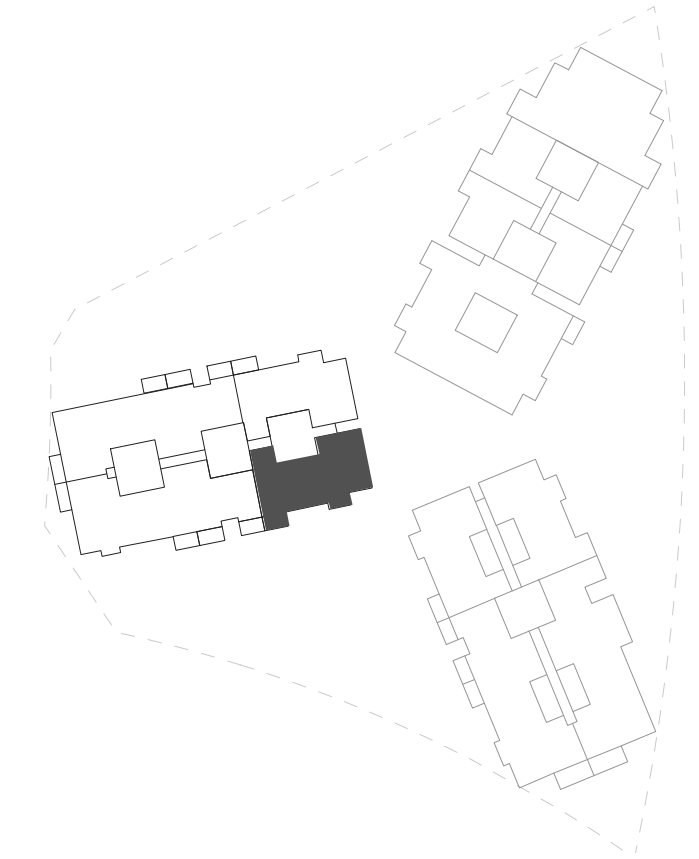
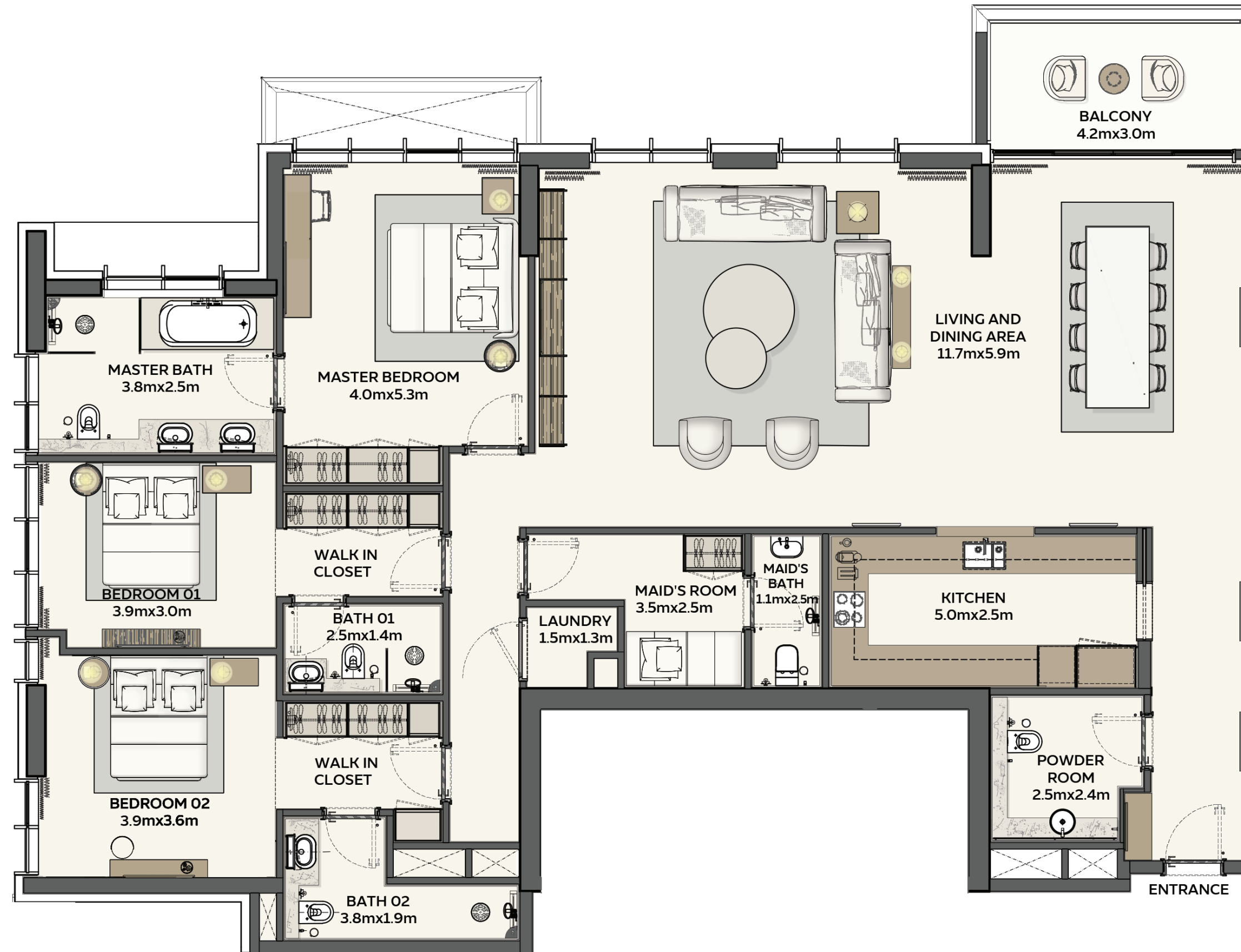
DEVELOPED BY



1. All room dimensions are in metric and measured to structural elements, and exclude wall finishes and construction tolerances. 2. All dimensions have been provided by our consultant architects. 3. All materials, dimensions, drawings, features and amenities, are approximate at the time of printing. 4. Actual area may vary from stated area. 5. Drawings are not to scale E&OE. 6. The developer reserves the right to make revisions to the floor plans and any features, materials, dimensions, drawings, and amenities mentioned on this plan and in the brochure without notice. 7. Unit plans may exist in mirrored version.

Sidr Residences 1 - unit plans

سدر ريزيدنسز
SIDR RESIDENCES



3 BEDROOM TYPE 3

Net Area starting from:
213.02 sqm / 2292.93 sqft

Balcony Area starting from:
9.28 sqm / 99.89 sqft

Total Area starting from:
222.30 sqm / 2392.82 sqft

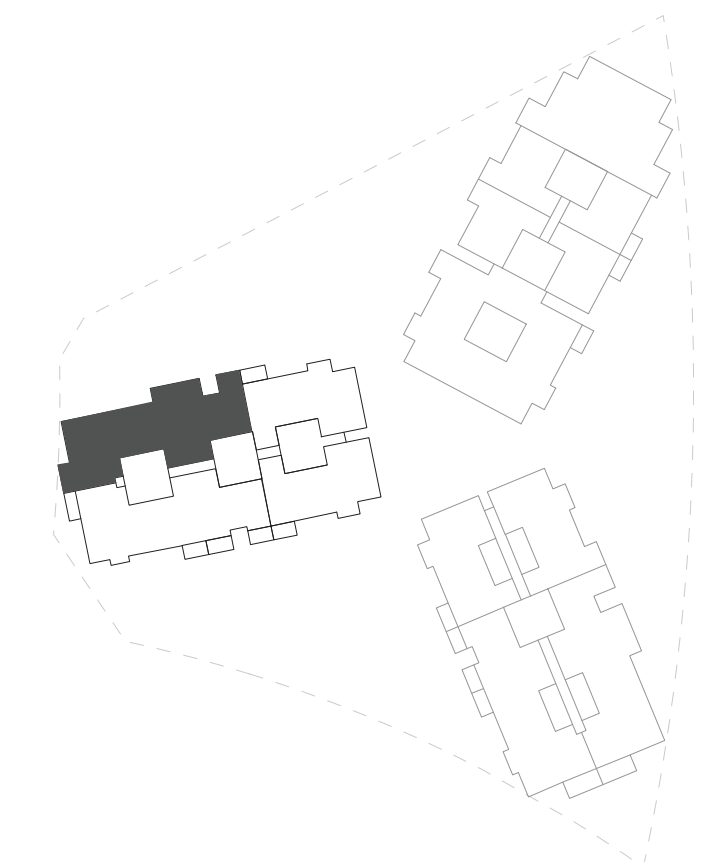
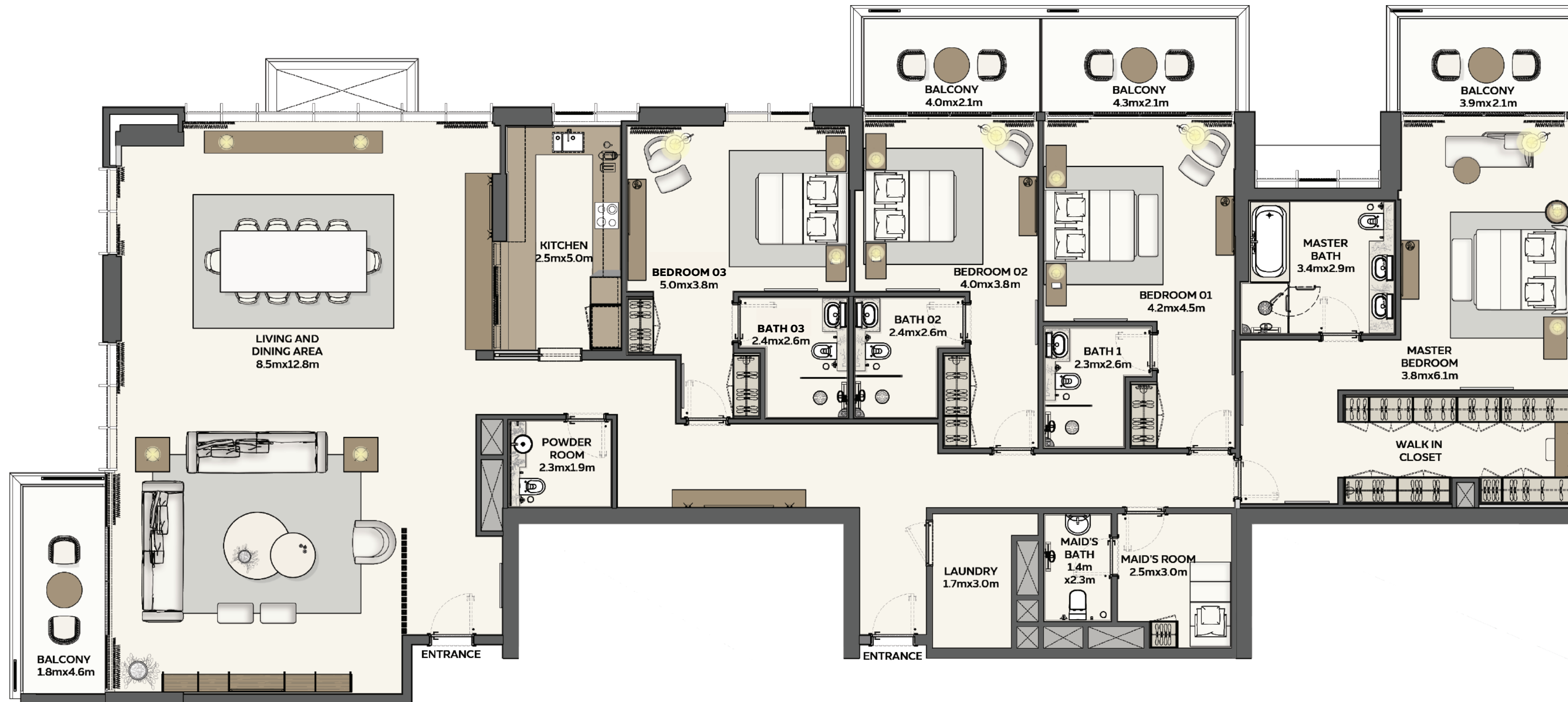
DEVELOPED BY



1. All room dimensions are in metric and measured to structural elements, and exclude wall finishes and construction tolerances. 2. All dimensions have been provided by our consultant architects. 3. All materials, dimensions, drawings, features and amenities, are approximate at the time of printing. 4. Actual area may vary from stated area. 5. Drawings are not to scale E&OE. 6. The developer reserves the right to make revisions to the floor plans and any features, materials, dimensions, drawings, and amenities mentioned on this plan and in the brochure without notice. 7. Unit plans may exist in mirrored version.

Sidr Residences 1 - unit plans

سدر ريزيدنسز
SIDR RESIDENCES



4 BEDROOM
TYPE 1

Net Area starting from:
346.92 sqm / 3734.22 sqft

Balcony Area starting from:
36.19 sqm / 389.55 sqft

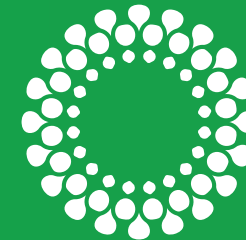
Total Area starting from:
383.11 sqm / 4123.76 sqft

سدر ريزيدنسز

SIDR RESIDENCES

في مدينة إكسبو دبي
AT EXPO CITY DUBAI

من تطوير
DEVELOPED BY



مدينة إكسبو دبي
EXPO CITY DUBAI

About Expo City Dubai

Expo City Dubai is an innovation-driven, people-centric community designed for living, leisure and business, where green spaces combine with cutting-edge technologies, enabling people to connect and build a brighter tomorrow. Discover an impressive selection of cultural and educational experiences, leisure facilities, event venues, dining, retail, parks and playgrounds – all connected by metro and within easy reach of airports, ports and highways.

Live in the new centre of Dubai's future.