

BURJ BINGHATTI  
JACOB & CO  
R E S I D E N C E S

An Iconic Skyscraper Sets  
to Break a World Record

**BINGHATTI** | **JACOB&CO**

An Astounding Luxury  
Design and Architectural Feat





Inspired by  
the Impossible





For Those  
Who Defy Convention



01.

About the  
Project

02.

Design  
Details

03.

Burj Binghatti  
Jacob & Co  
Residences



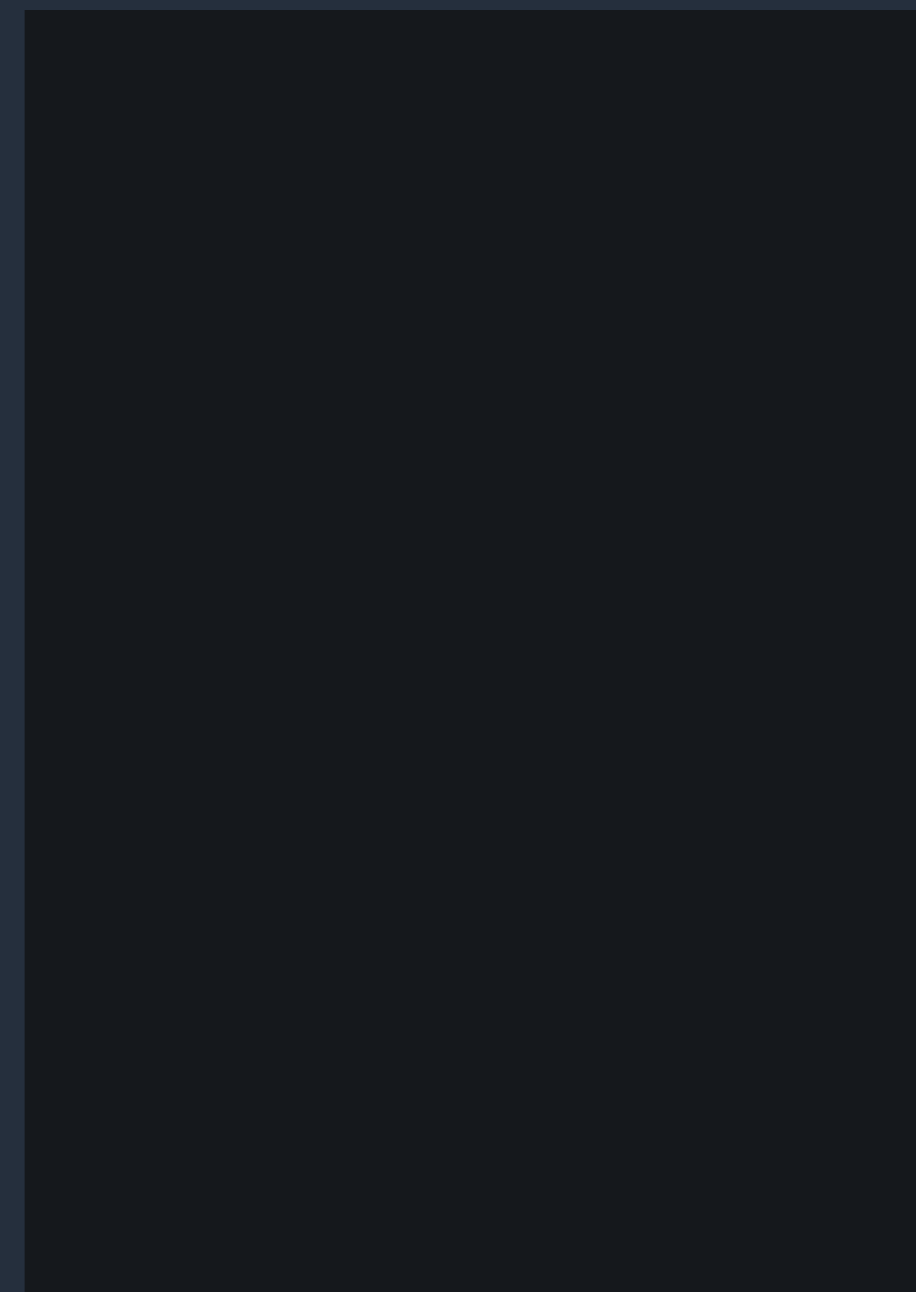


## Live Amidst the Clouds

Imagine living amidst the clouds at the peak of one of the tallest hypertowers in the world. Break boundaries, and challenge the unthinkable, Burj Binghatti Jacob & Co Residences utterly redefines the notion of a luxuriant contemporary lifestyle in the metropolis, offering impeccable, high-end bespoke living exclusively fashioned for the elite.

DESIGN CONCEPT

# The Clouds

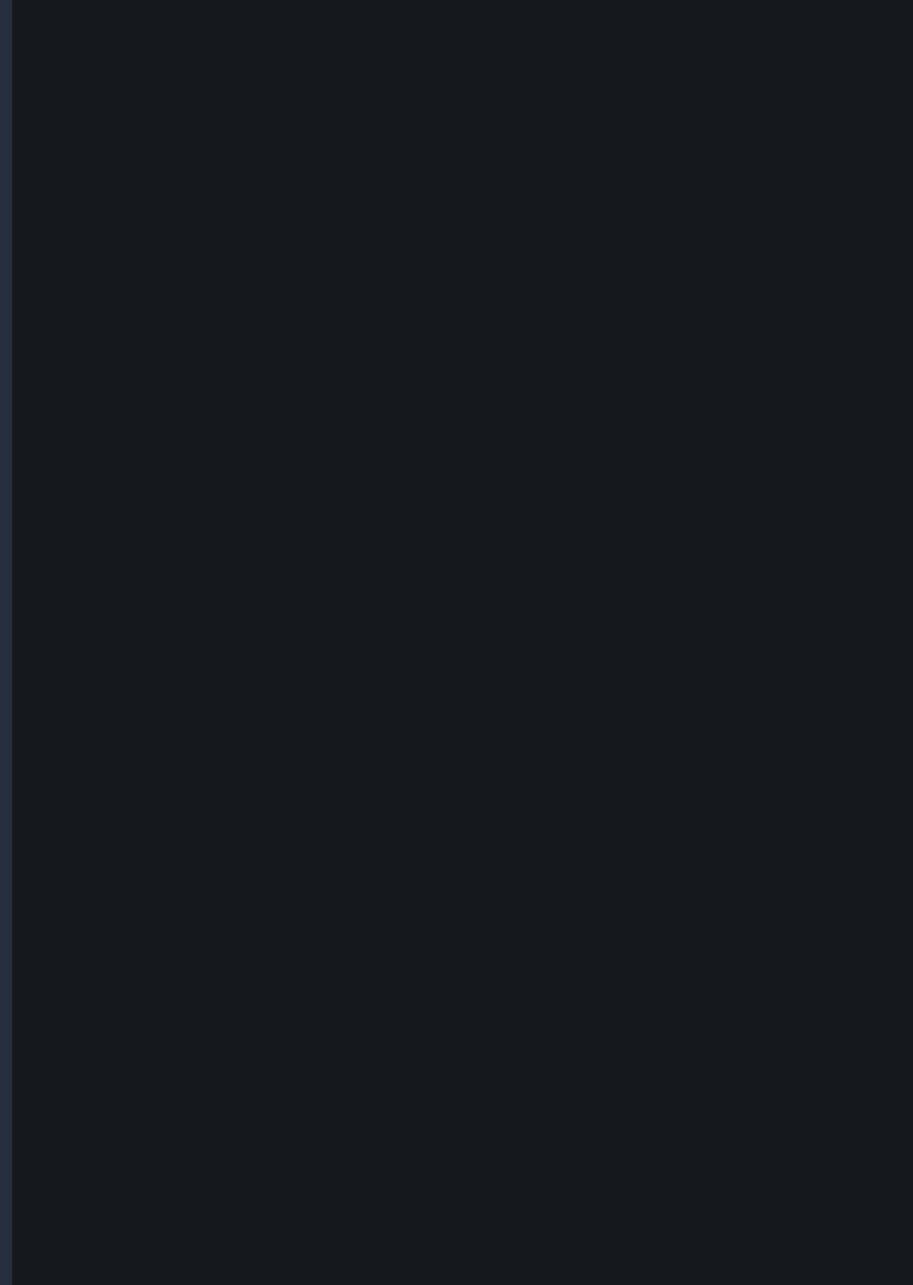


BINGHATTI | JACOB&CO



DESIGN CONCEPT

# The Clouds



BINGHATTI | JACOB&CO





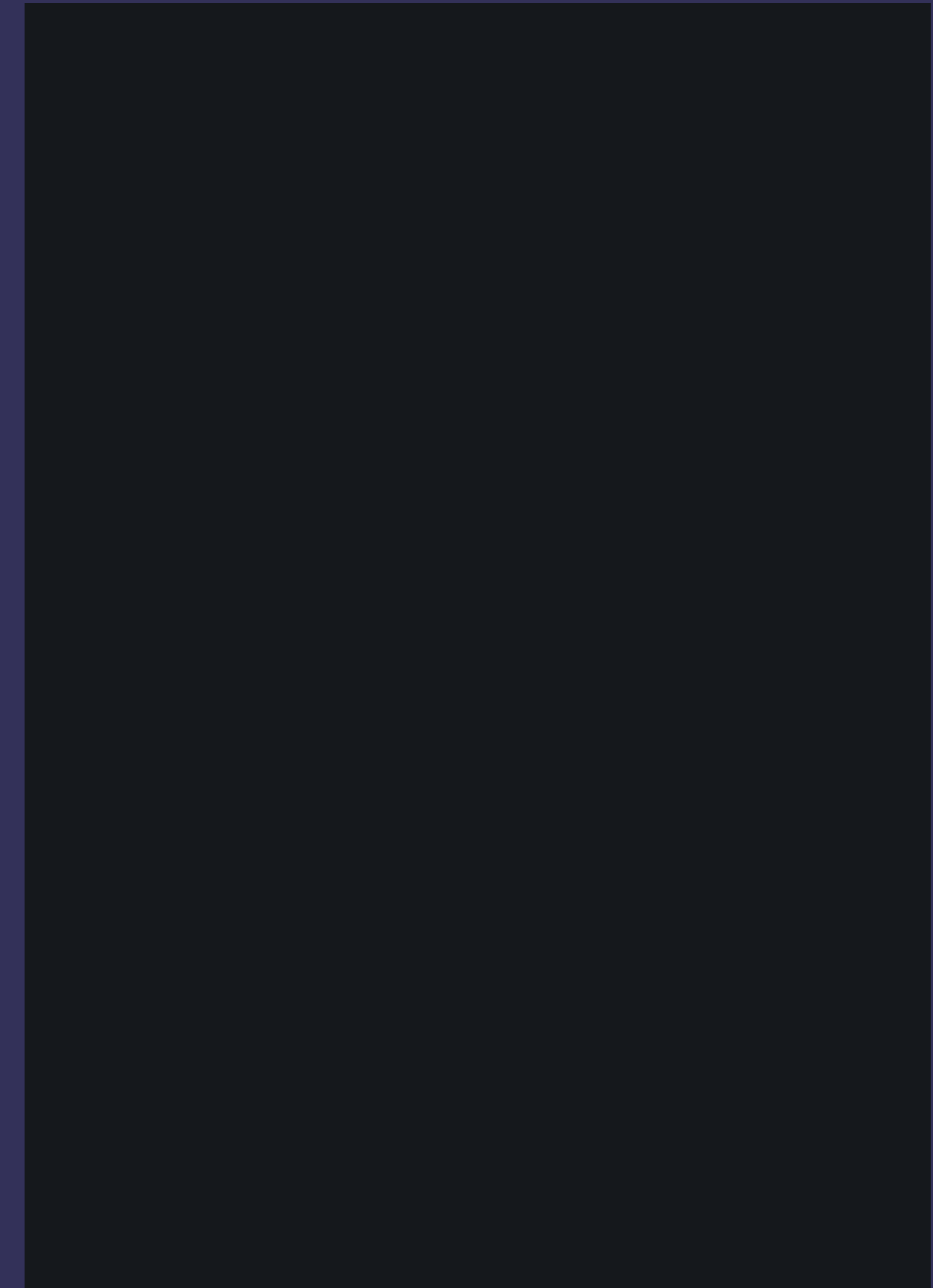


## Horology and Watchmaking by High Jewelry Setting

The amalgamation of ingenuity and refinement are the hallmarks of this groundbreaking architectural masterpiece. Featuring stylized elements and dimensions found in Jacob & Co's scrupulous watchmaking process that are both highly aesthetic and constructive. The hypertower has gone beyond remarkable architectural and horological achievements, full of unparalleled pioneering technological solutions and adorned with incomparable finishing techniques inspired by Jacob & Co's horological and design philosophy.

DESIGN CONCEPT

# The Gems

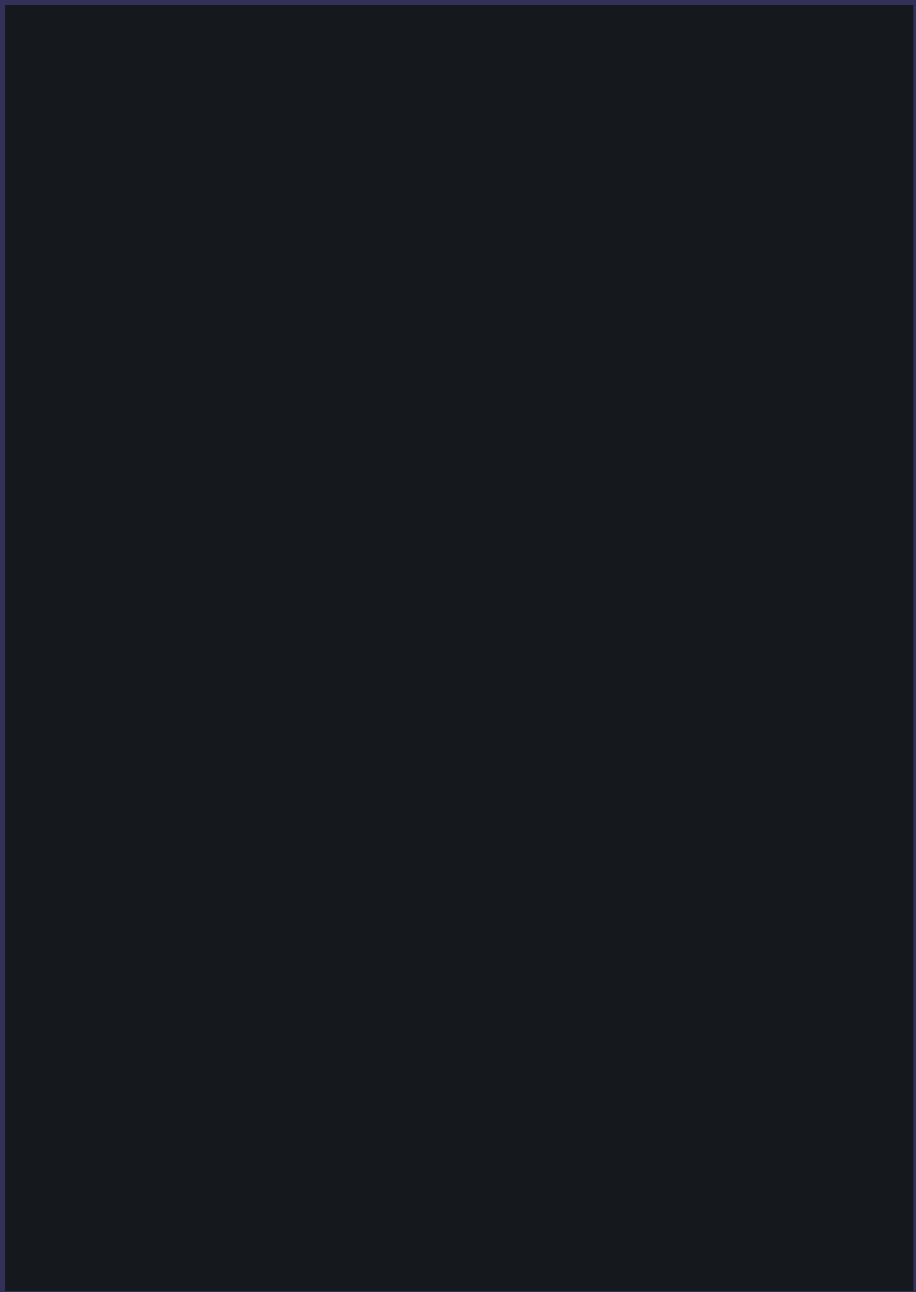


BINGHATTI | JACOB&CO



DESIGN CONCEPT

# The Gems



BINGHATTI | JACOB&CO



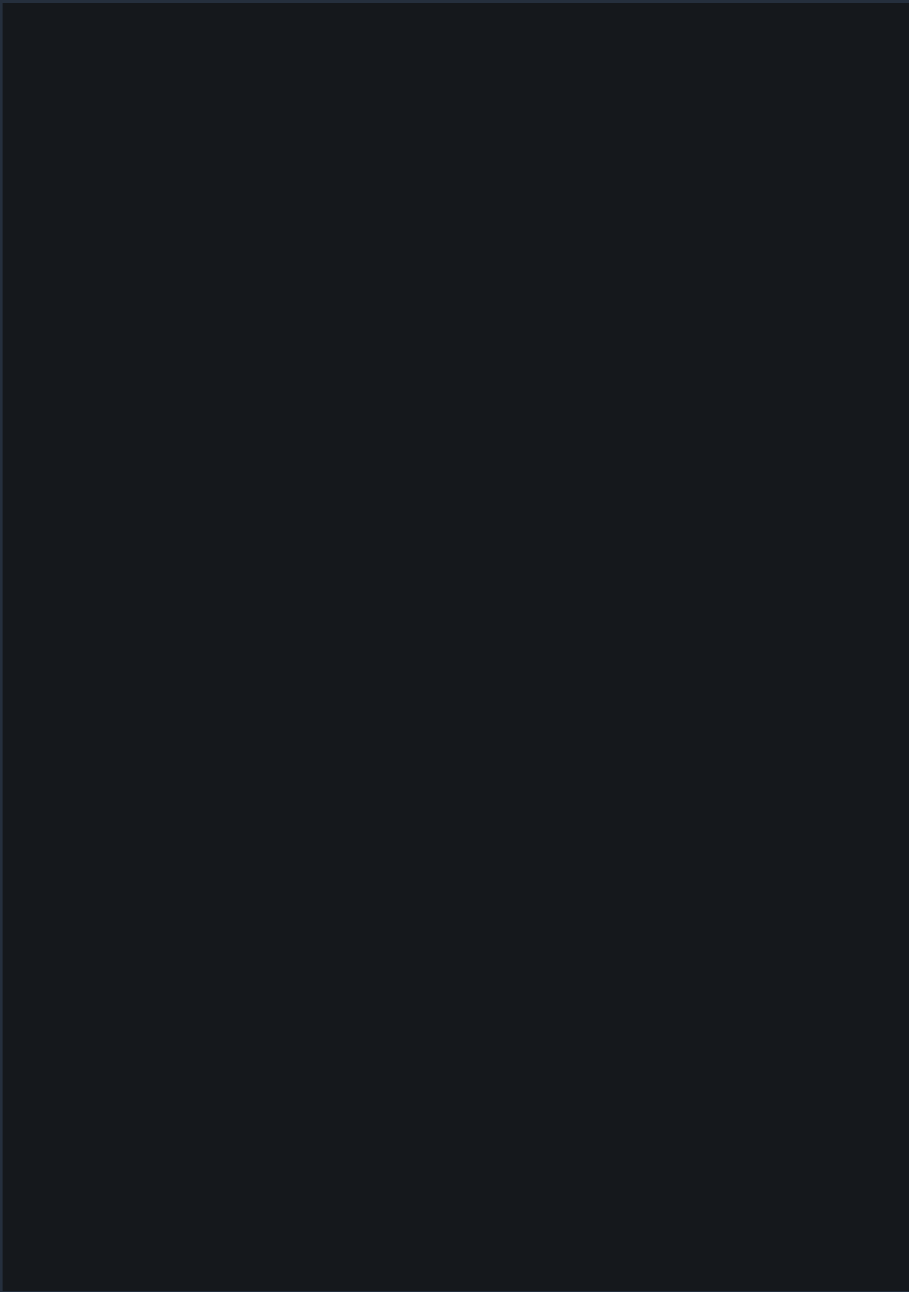
# Unrivaled Opulence

The crown stands as the culmination of the Bingham and Jacob & Co signature architectural and horological code, the emblem and purest representation of the brands. The crown is found at the highest altitude of the hypertower illuminating unrivaled opulence with its voluptuous and fascinating constructive display of the iconic and signature Jacob diamonds.



DESIGN CONCEPT

# Intricate Artistry

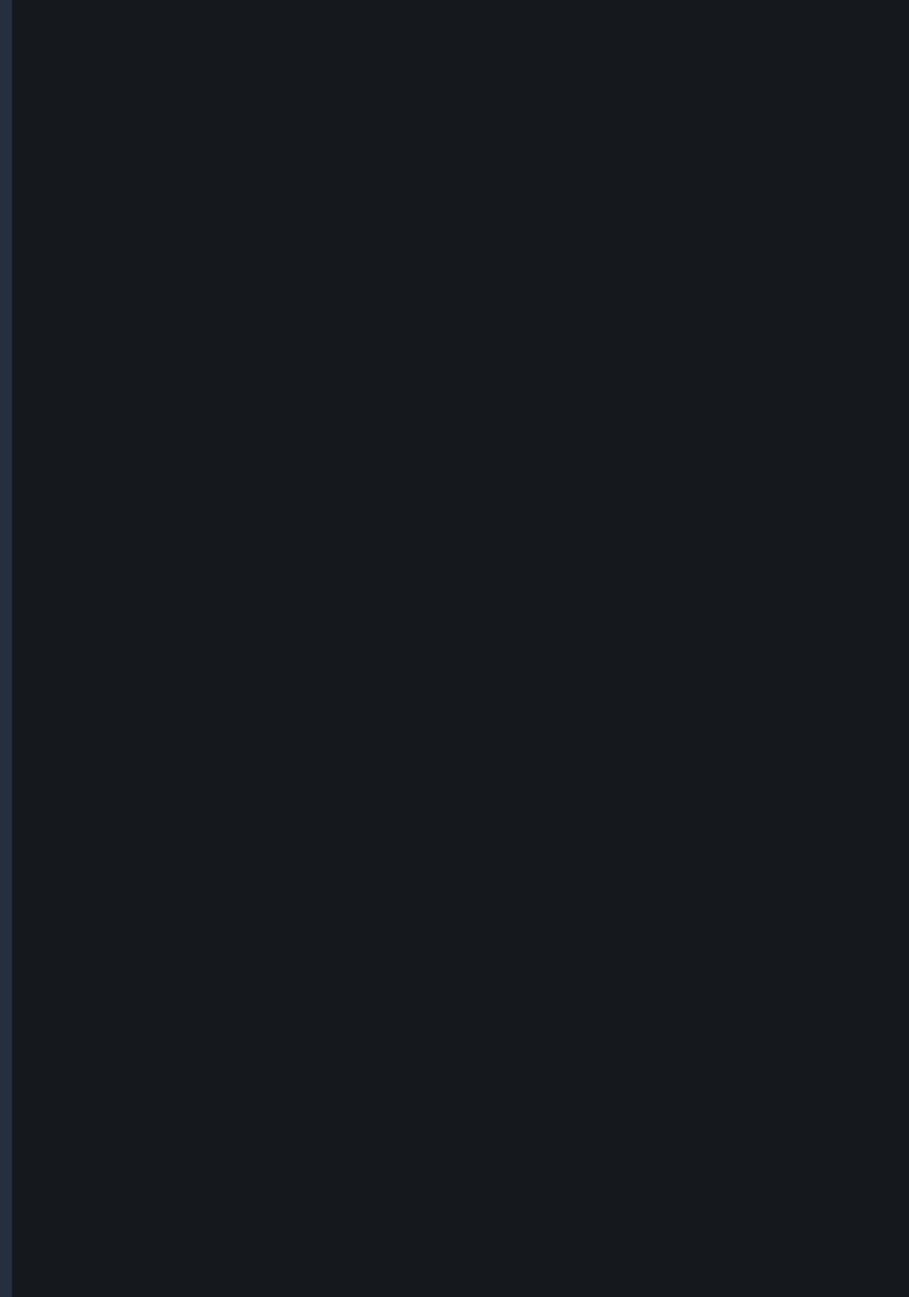


BINGHATTI | JACOB&CO



DESIGN CONCEPT

# Intricate Artistry



BINGHATTI | JACOB&CO



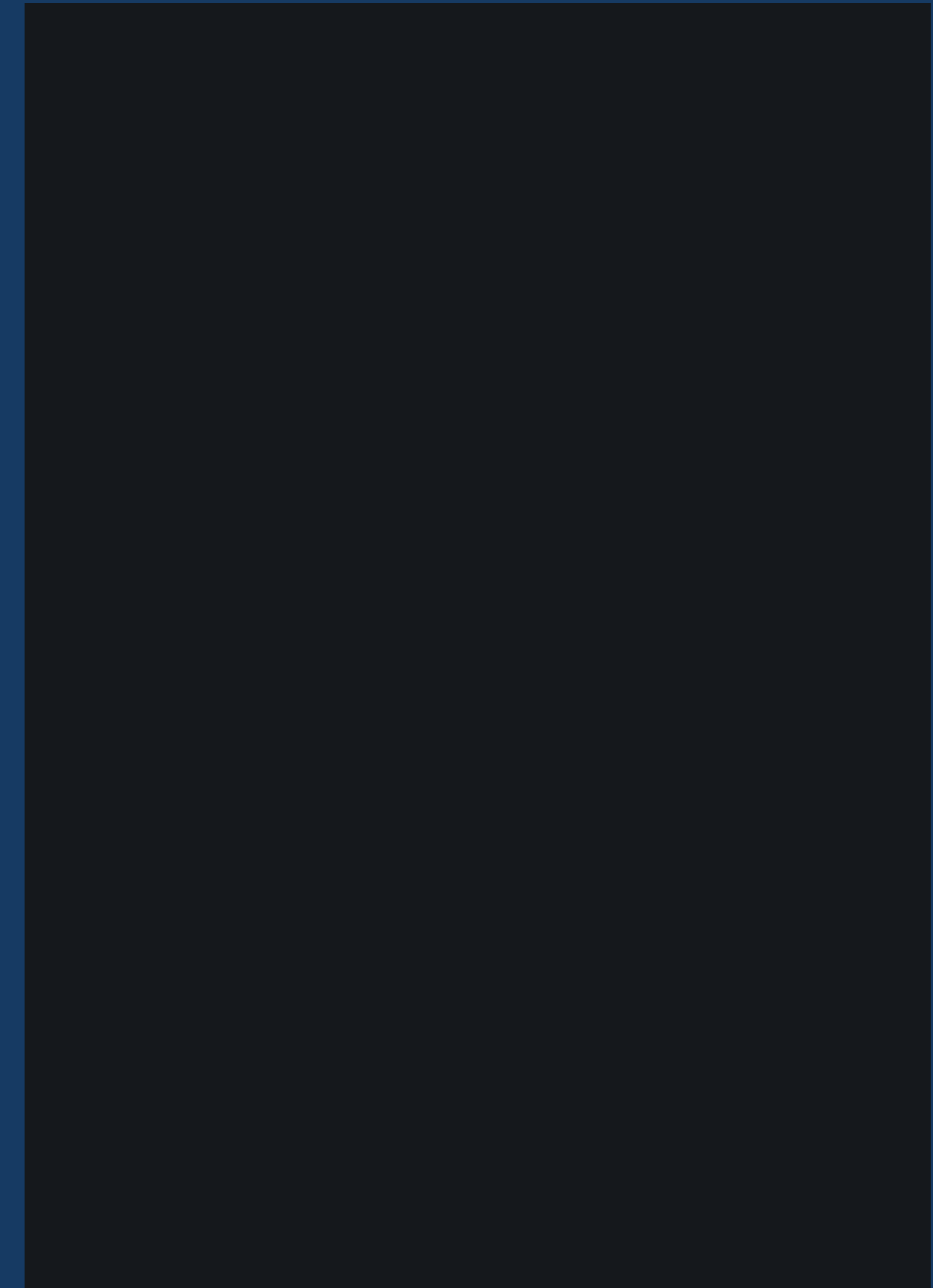


## Inspired by the Impossible

Brimming with radical and profound ideas, breaking new ground in high-end architectural and horological spheres, Bingham and Jacob & Co unite to transcend boundaries never believed possible - an astounding luxury design and architectural feat the world has never seen before.

DESIGN CONCEPT

# The Impossible

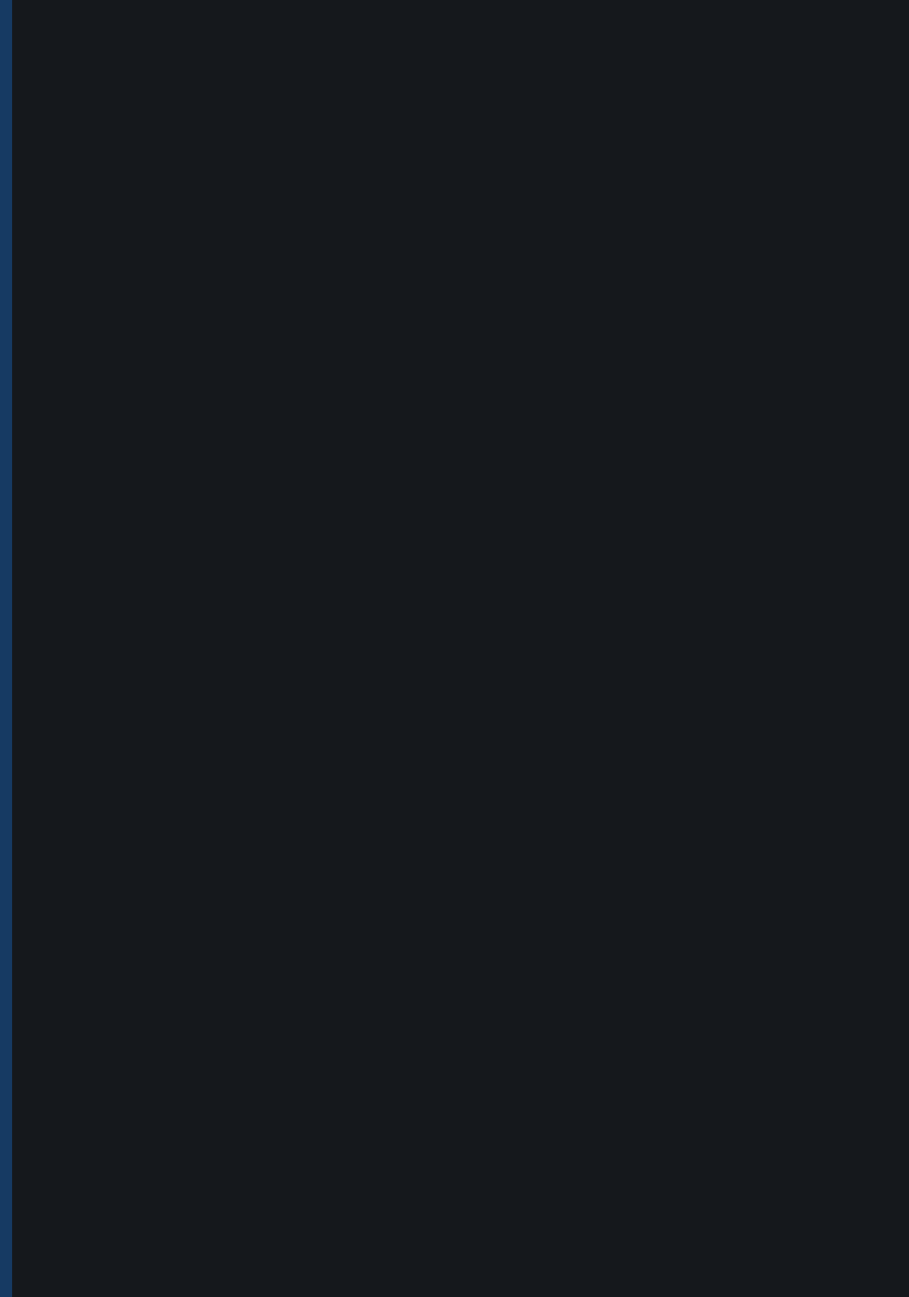


BINGHATTI | JACOB&CO



DESIGN CONCEPT

# The Impossible



BINGHATTI | JACOB&CO





---

01.

About  
The Project

---





JACOB & CO  
GENEVE

TROIS



ABOUT THE PROJECT

# The Map

SLS DUBAI HOTEL  
& RESIDENCES

AL KHAIL  
ROAD

PARAMOUNT  
HOTEL

JUMEIRAH  
BEACH

DOWNTOWN  
DUBAI

AL JADDAF  
DUBAI CANAL

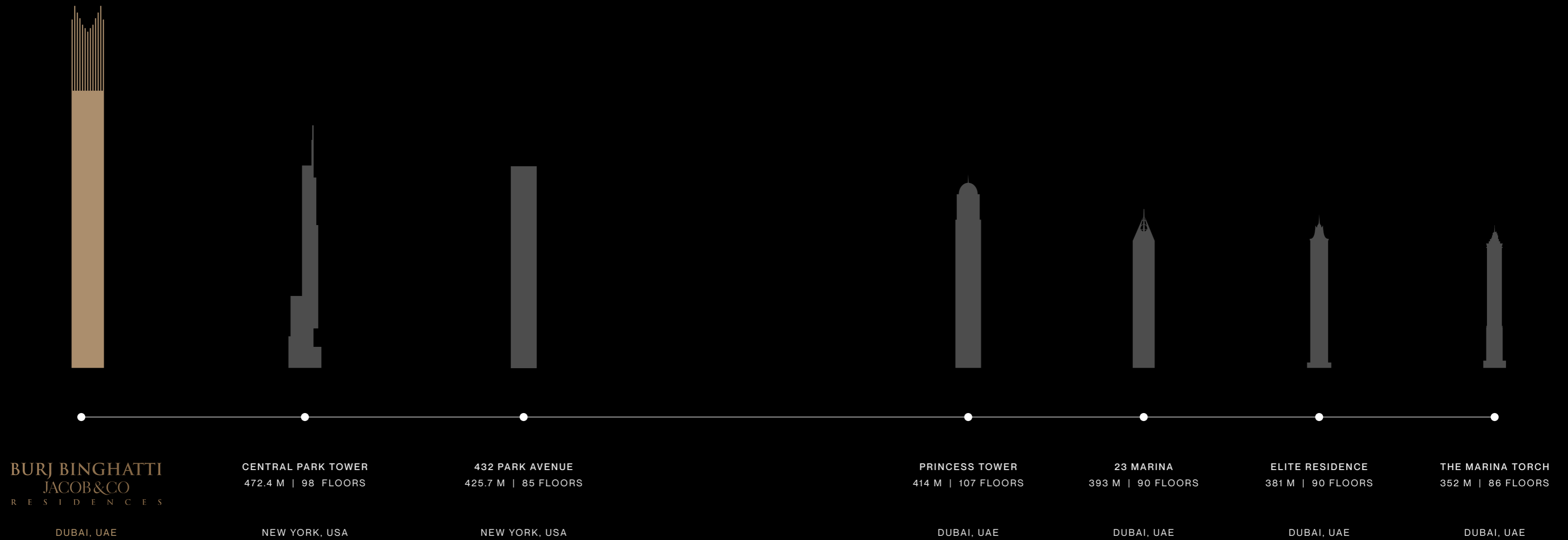
BURJ  
KHALIFA

SHEIKH ZAYED  
ROAD





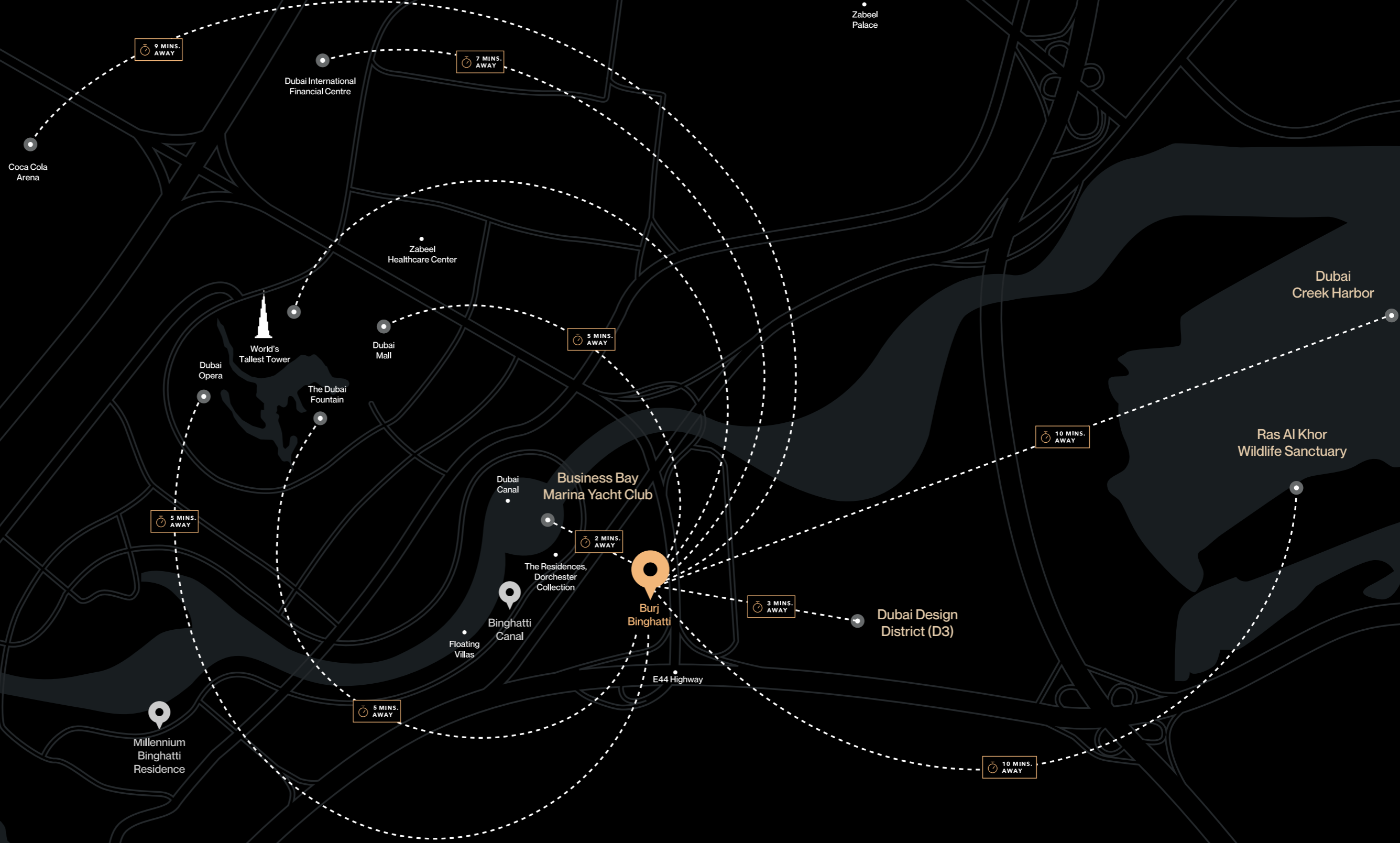
# An Iconic Skyscraper Sets to Break a World Record





ACCESSIBILITY

# Strategically Situated in Business Bay





ACCESSIBILITY

# Ras Al Khor Wildlife Sanctuary

tranquility amidst the  
bustling metropolis

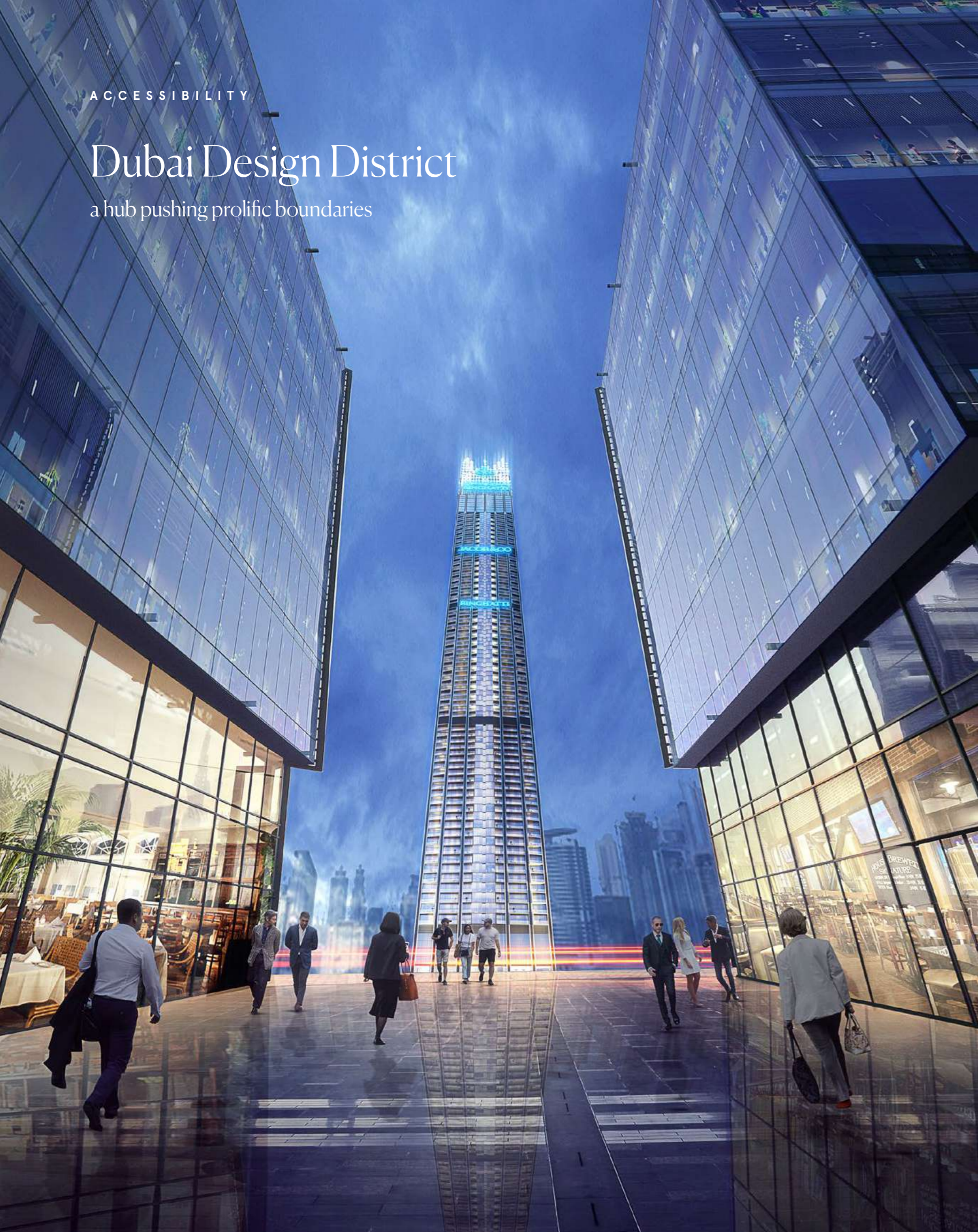




ACCESSIBILITY

# Dubai Design District

a hub pushing prolific boundaries



ACCESSIBILITY

# Dubai Creek Harbor

a boundless sumptuous community





ACCESSIBILITY

# Business Bay Marina Yacht Club

indulgence in grand  
metropolitan exuberant living



بنين عاصمي  
BINGHATTI  
JACOB&CO  
BINGHATTI



ABOUT THE PROJECT

# Project Facts

Property Type

Residential Skyscraper

Exclusive Bedrooms Suites

Sapphire Suite (2 Bedroom)

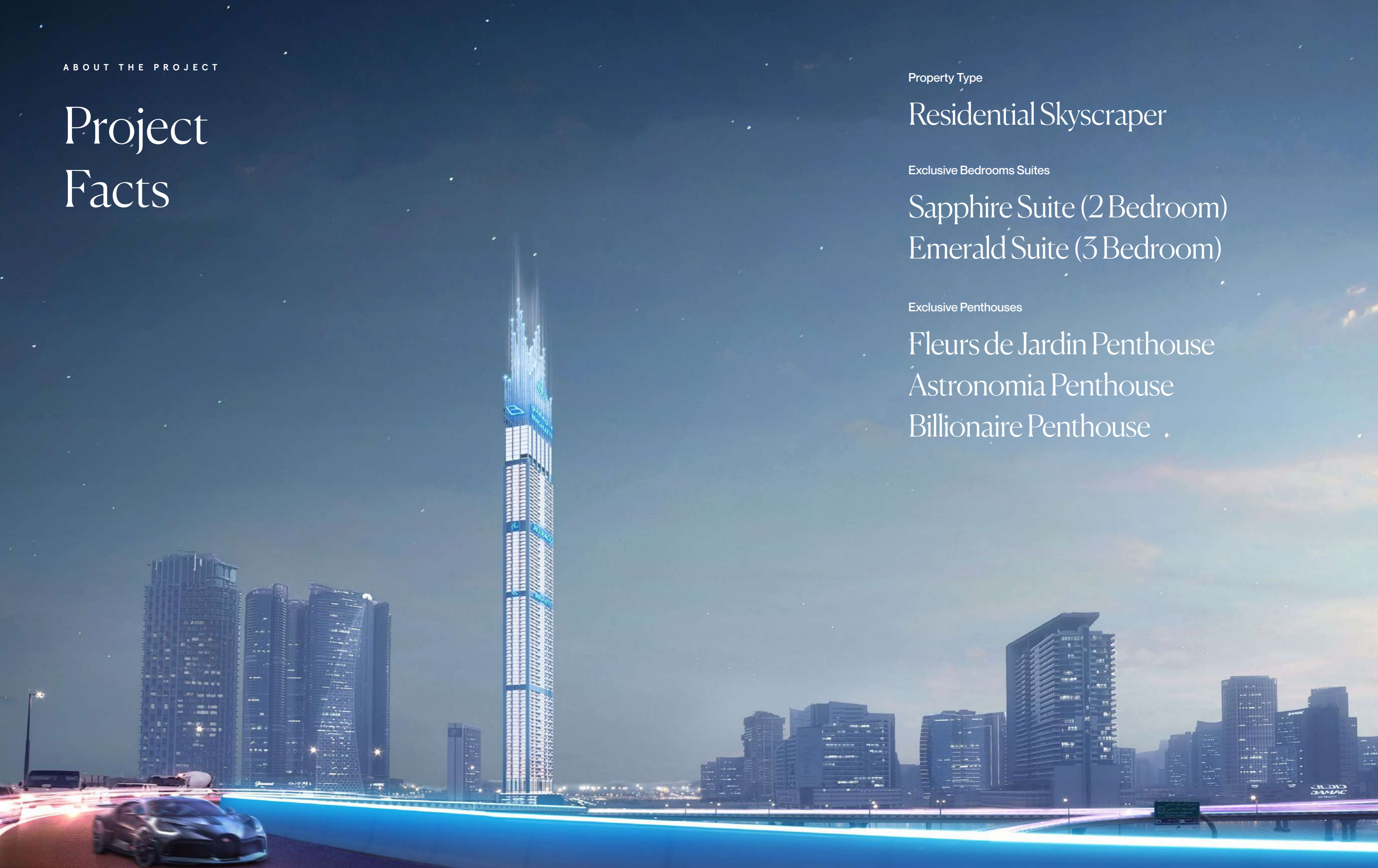
Emerald Suite (3 Bedroom)

Exclusive Penthouses

Fleurs de Jardin Penthouse

Astronomia Penthouse

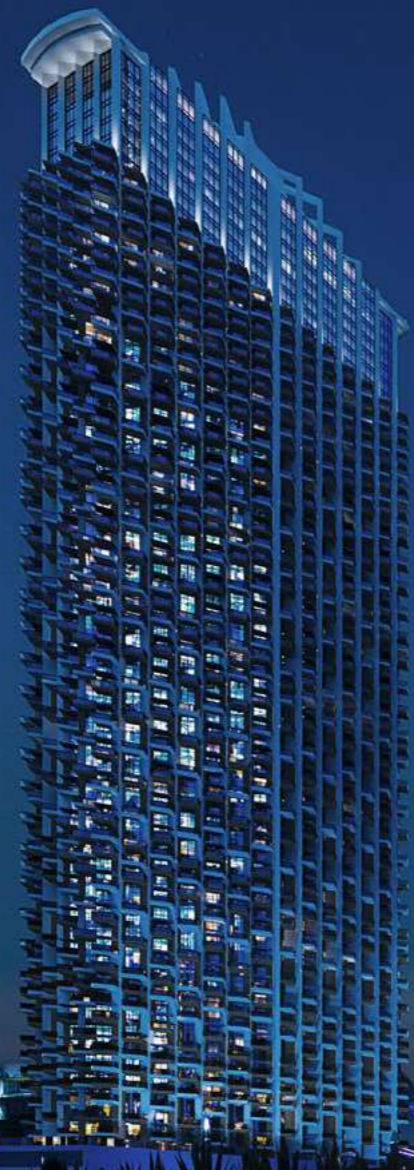
Billionaire Penthouse





ABOUT THE PROJECT

# Stating Features



CONCIERGE  
SERVICE



CHAUFFEUR  
SERVICE



BODYGUARD  
SERVICE



BUTLER  
SERVICE



TITANIUM  
ACCESS CARD



PARKING  
ACCESS CARD



LOBBY  
LOUNGE



PRIVATE  
CHEF SERVICE



INFINITY  
POOL



FOOD &  
BEVERAGE



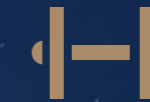
SPA  
SERVICE



DAYCARE  
SERVICE



HOUSEKEEPING /  
CLEANING SERVICE



GYMNASIUM &  
TRAINING SERVICES



---

02.  
Design  
Details

---







THE HYPERTOWER

Live Amidst  
the Clouds



LIVE AMIDST THE CLOUDS

High-end  
Bespoke Living





LIVE AMIDST THE CLOUDS

Offering an Impeccable  
Contemporary Lifestyle





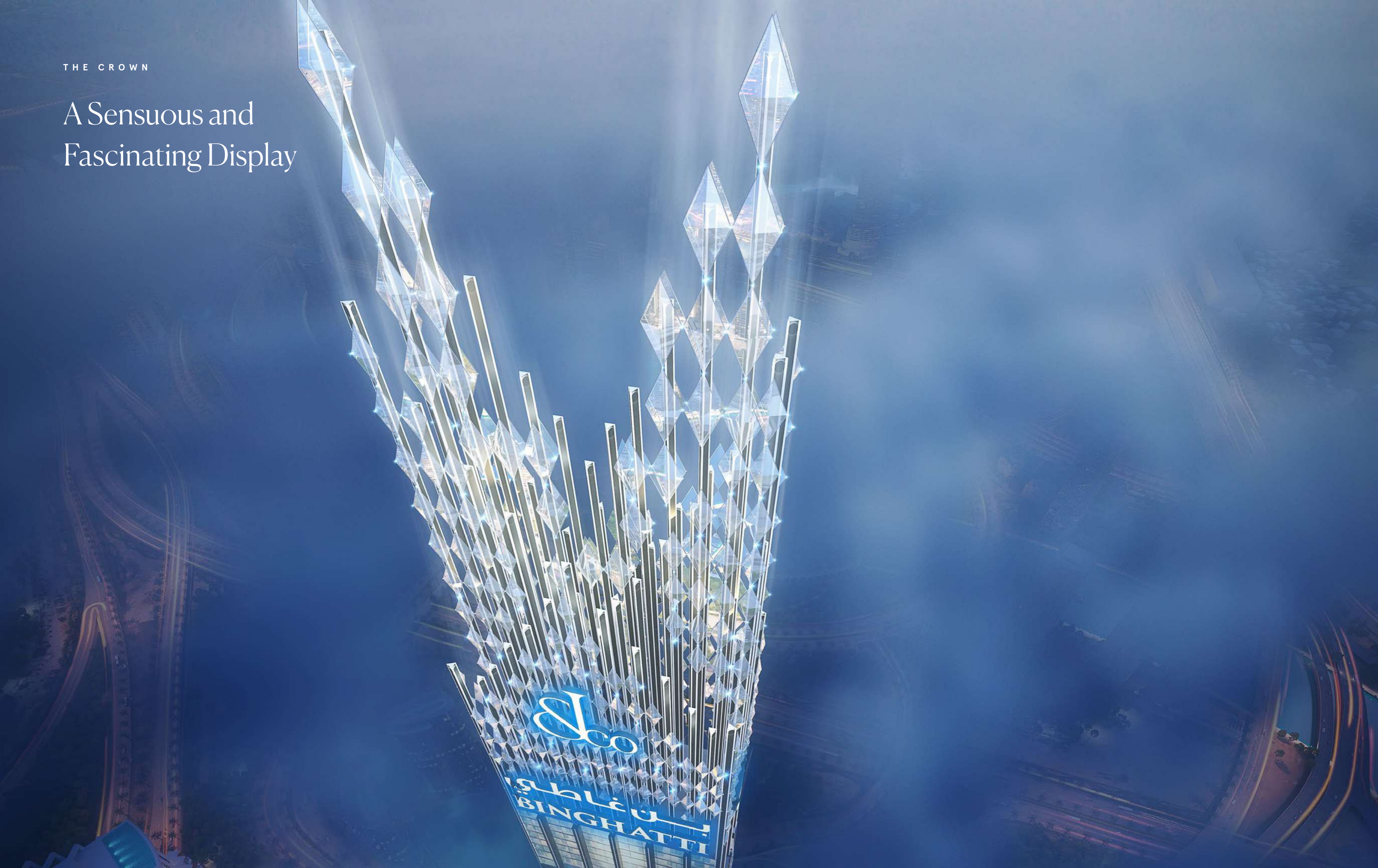
THE HYPERTOWER

The  
Crown



THE CROWN

A Sensuous and  
Fascinating Display





THE HYPERTOWER

Design  
Details



DESIGN DETAILS

Exclusively Fashioned  
for the Elite





DESIGN DETAILS



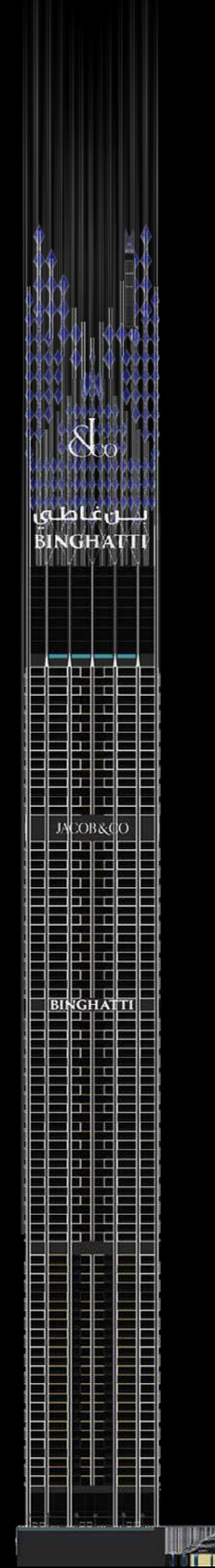
REAR ELEVATION



RIGHT ELEVATION



FRONT ELEVATION



LEFT ELEVATION



DESIGN DETAILS

# Elevating Ultra-modern Exuberant Lifestyle



BURJ BINGHATTI  
JACOB & CO.  
RESIDENCES





DESIGN DETAILS

# The Relentless Quest for Greatness





DESIGN DETAILS

Unmatched  
Architectural Prowess



بن غاطي  
BINGHATTI



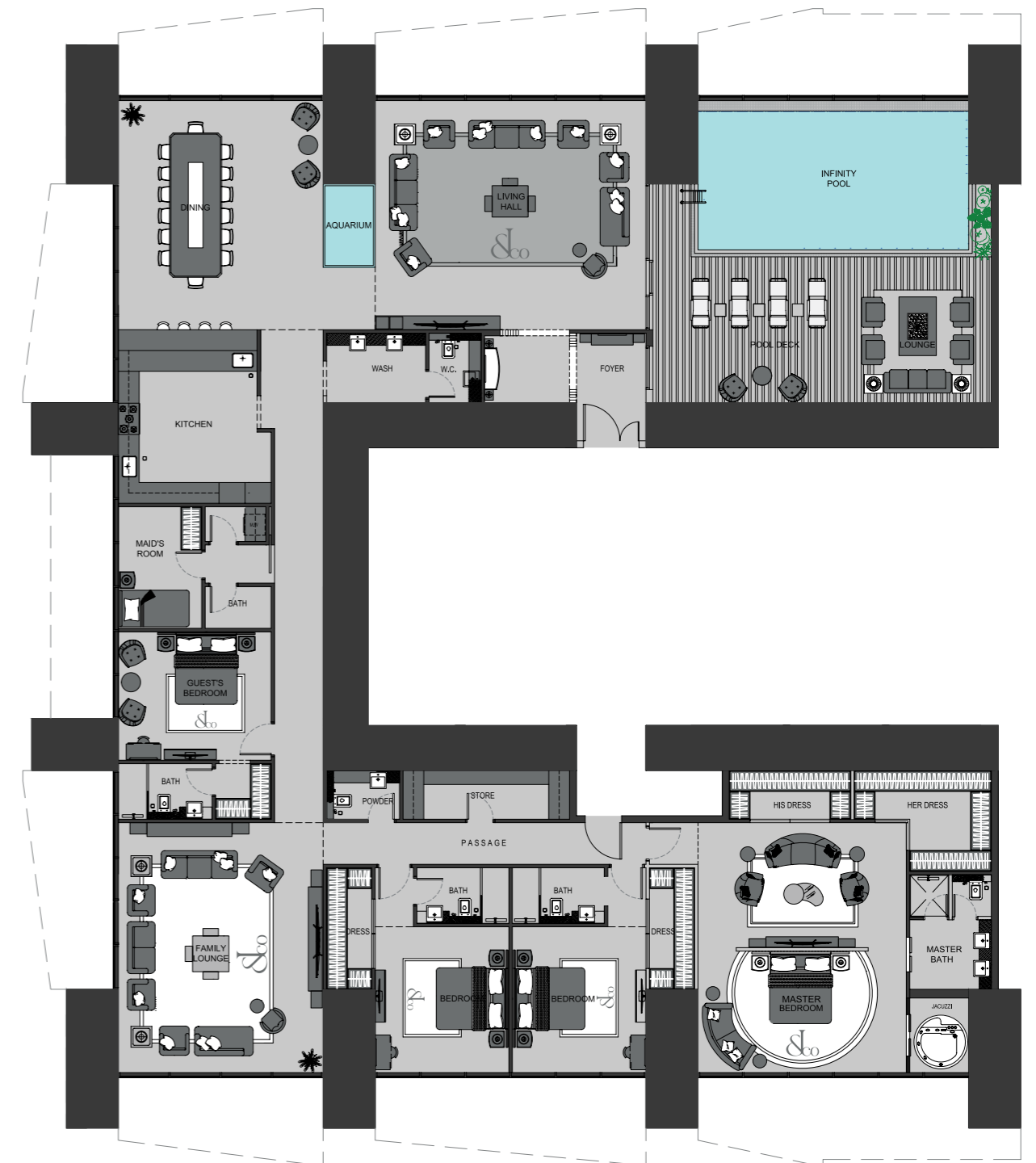
INSPIRED BY THE CRAFTSMANSHIP OF

# Fleurs de Jardin





# Fleurs de Jardin Penthouse



Disclaimer: 1. All stated dimensions and services whether in relation to the building, common areas or individual units are subject to government and local authority approvals. Final dimensions and services will be stated in your sales and purchase agreement 2. All room dimensions are measured to structural elements and exclude wall finishes and construction tolerances. 3. All dimensions have been provided by our consultant architects. 4. All materials, dimensions and drawings are approximate. Information is subject to change without notice. 5. Actual suite area may vary from the stated area. Drawings are not to scale. The Developer reserves the right to make any revisions whatsoever including for aesthetic purposes. 6. Calculation of suite area is measured as the area bounded by the centre line of demising or partition walls separating one unit from another unit, the exterior face of all exterior walls, and the exterior face of the corridor wall enclosing the adjoining unit. 7. Calculation of balcony area is measured as the area bounded by the centre line of demising or partition walls separating one unit from another unit, the outmost face of the enclosing guard and the external face of the adjoining balcony. 8. The units are measured at typical floor in the building. Columns may vary in size depending on the floor level. 9. For each unit type, unit sizes and details might be different and your sales and purchase agreement will contain the actual size of each specific unit.



DESIGN DETAILS

# Illuminating Unrivaled Affluence









INSPIRED BY THE CRAFTSMANSHIP OF

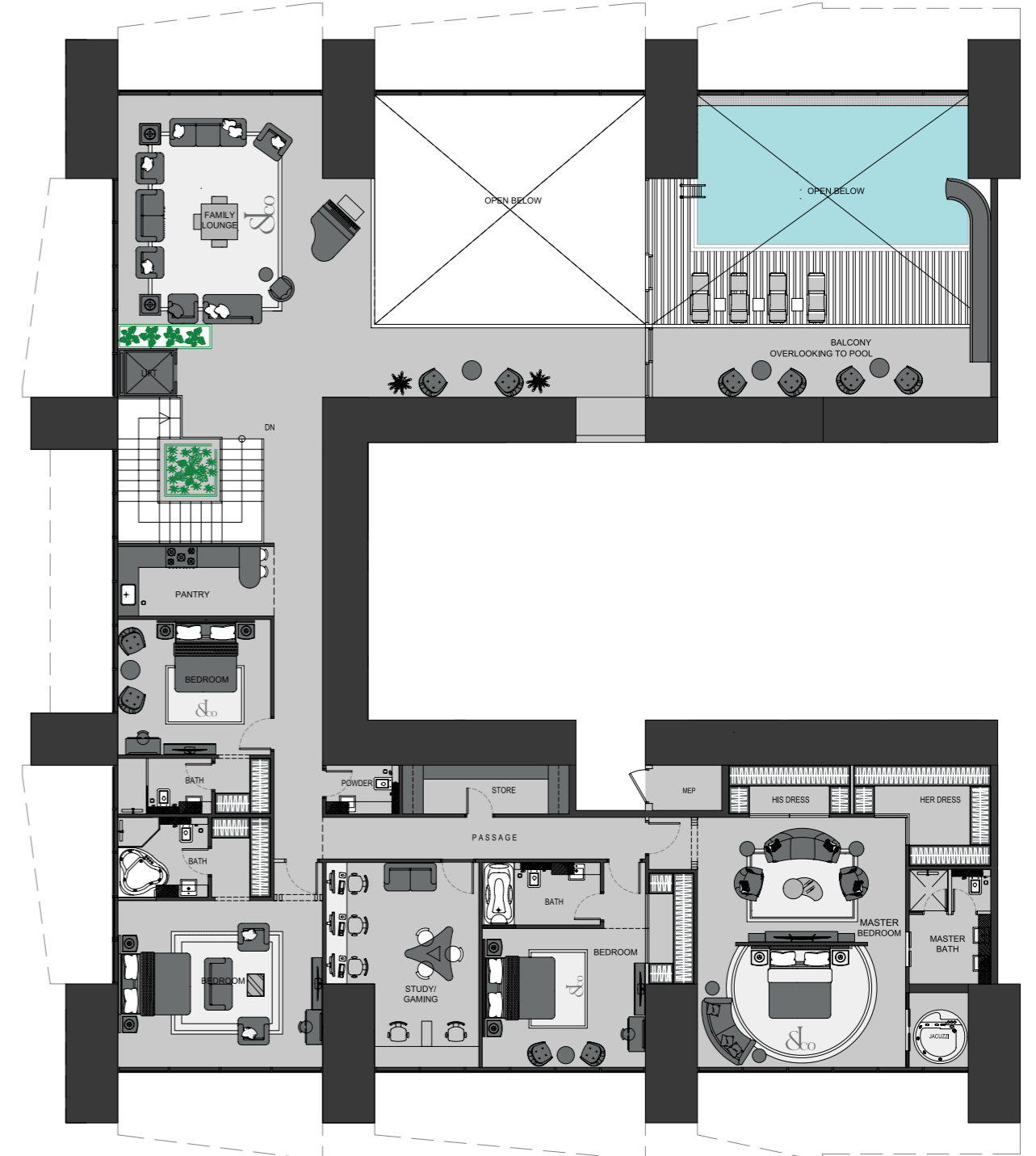
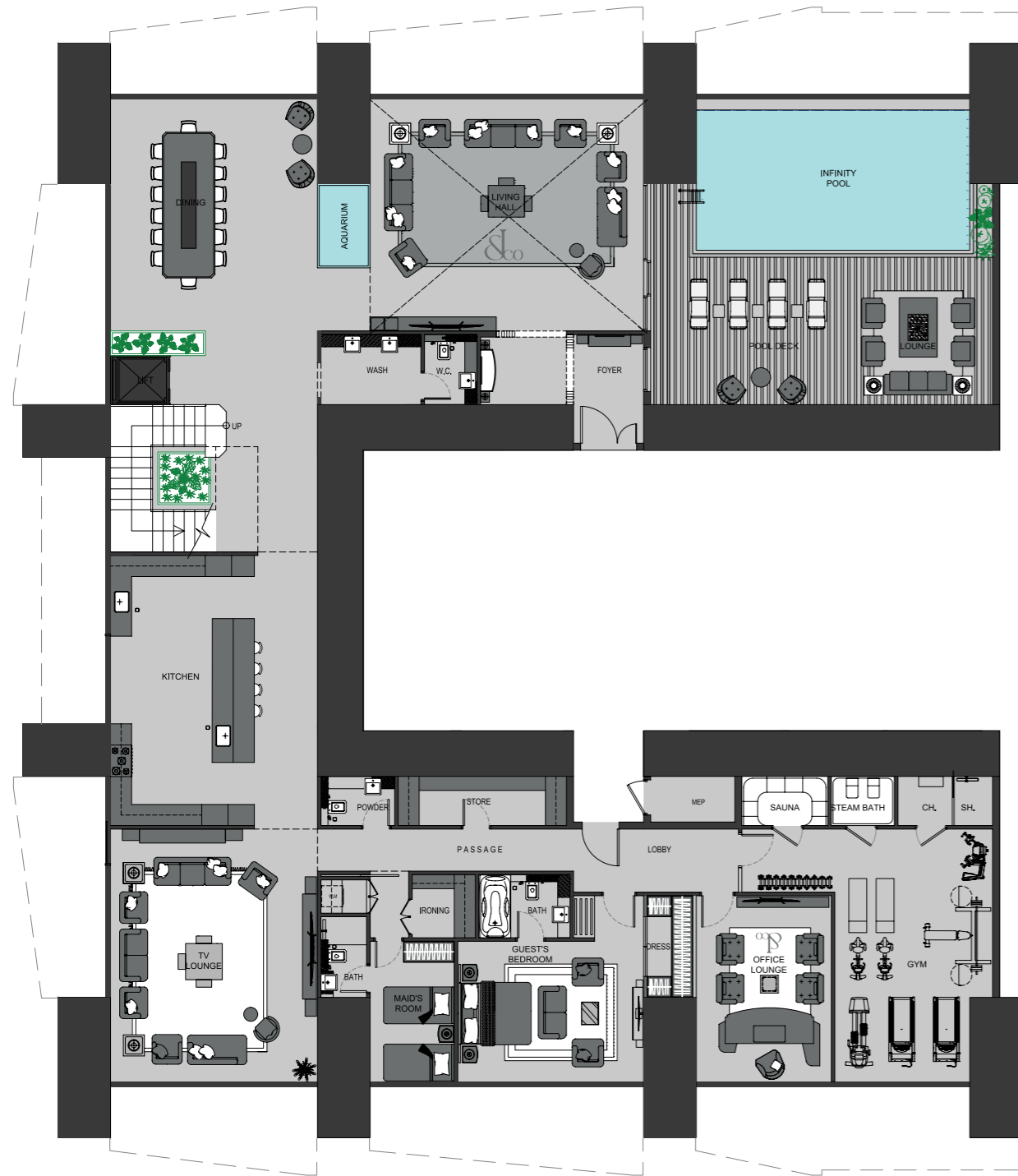
# Astronomia





# Astronomia Penthouse

## Upper Level



Disclaimer: 1. All stated dimensions and services whether in relation to the building, common areas or individual units are subject to government and local authority approvals. Final dimensions and services will be stated in your sales and purchase agreement 2. All room dimensions are measured to structural elements and exclude wall finishes and construction tolerances. 3. All dimensions have been provided by our consultant architects. 4. All materials, dimensions and drawings are approximate. Information is subject to change without notice. 5. Actual suite area may vary from the stated area. Drawings are not to scale. The Developer reserves the right to make any revisions whatsoever including for aesthetic purposes.

6. Calculation of suite area is measured as the area bounded by the centre line of demising or partition walls separating one unit from another unit, the exterior face of all exterior walls, and the exterior face of the corridor wall enclosing the adjoining unit. 7. Calculation of balcony area is measured as the area bounded by the centre line of demising or partition walls separating one unit from another unit, the outmost face of the enclosing guard and the external face of the adjoining balcony. 8. The units are measured at typical floor in the building. Columns may vary in size depending on the floor level. 9. For each unit type, unit sizes and details might be different and your sales and purchase agreement will contain the actual size of each specific unit.







DESIGN DETAILS

# Sprawling in The City's Most Iconic Skyline





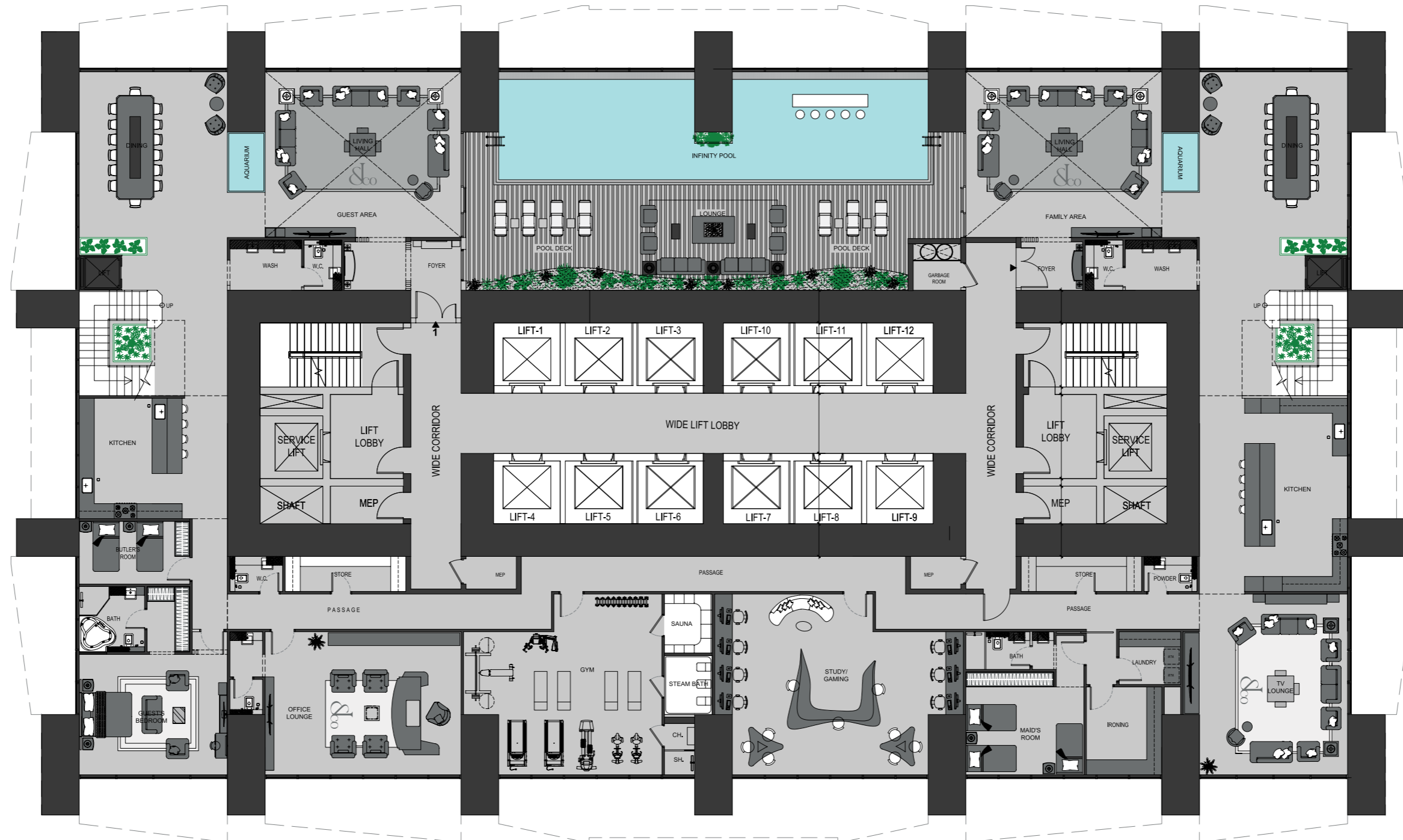
INSPIRED BY THE CRAFTSMANSHIP OF

# Billionaire





# Billionaire Penthouse



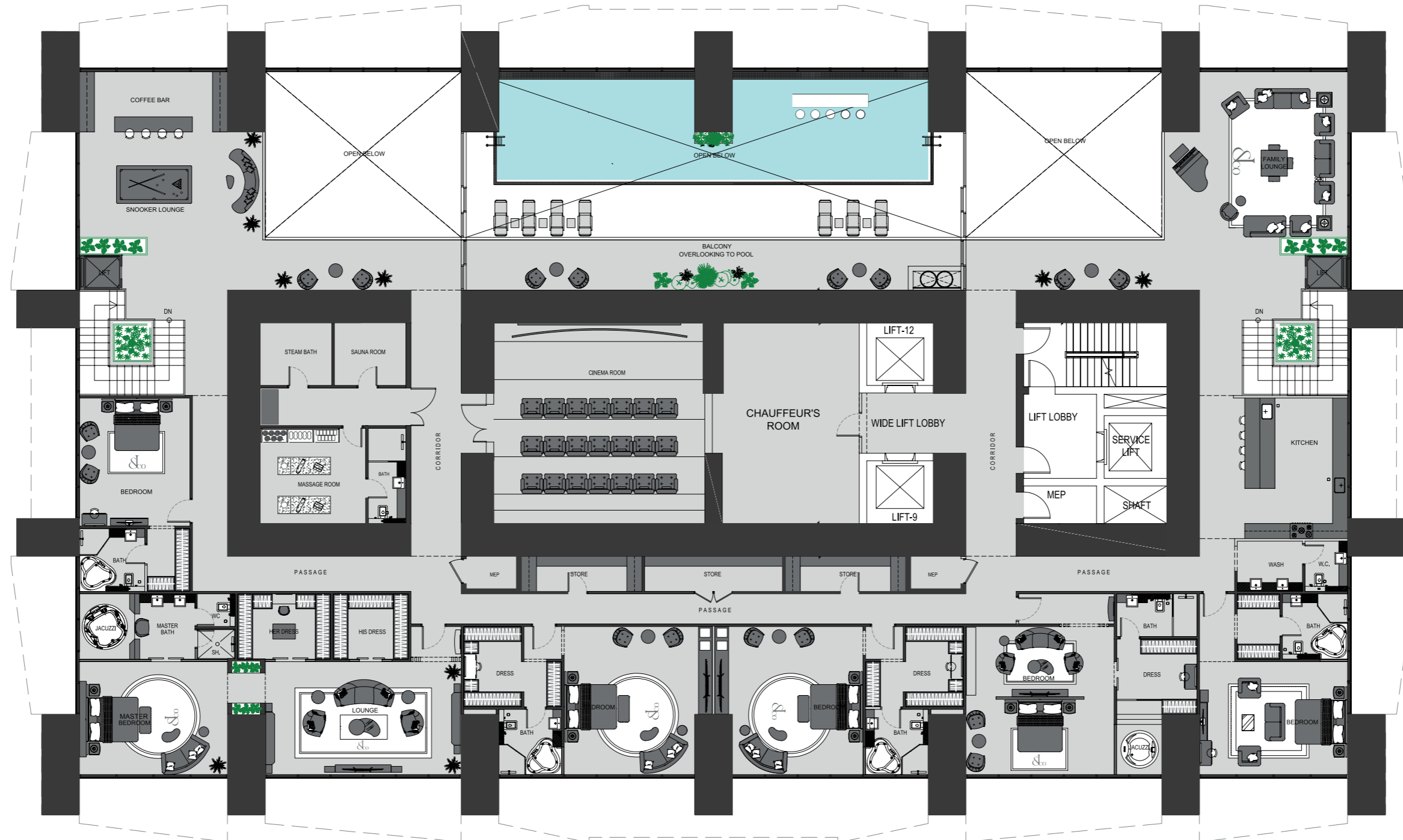
Disclaimer: 1. All stated dimensions and services whether in relation to the building, common areas or individual units are subject to government and local authority approvals. Final dimensions and services will be stated in your sales and purchase agreement 2. All room dimensions are measured to structural elements and exclude wall finishes and construction tolerances. 3. All dimensions have been provided by our consultant architects. 4. All materials, dimensions and drawings are approximate. Information is subject to change without notice. 5. Actual suite area may vary from the stated area. Drawings are not to scale. The Developer reserves the right to make any revisions whatsoever including for aesthetic purposes.

6. Calculation of suite area is measured as the area bounded by the centre line of demising or partition walls separating one unit from another unit, the exterior face of all exterior walls, and the exterior face of the corridor wall enclosing the adjoining unit. 7. Calculation of balcony area is measured as the area bounded by the centre line of demising or partition walls separating one unit from another unit, the outmost face of the enclosing guard and the external face of the adjoining balcony. 8. The units are measured at typical floor in the building. Columns may vary in size depending on the floor level. 9. For each unit type, unit sizes and details might be different and your sales and purchase agreement will contain the actual size of each specific unit.



# Billionaire Penthouse

## Upper Level



Disclaimer: 1. All stated dimensions and services whether in relation to the building, common areas or individual units are subject to government and local authority approvals. Final dimensions and services will be stated in your sales and purchase agreement 2. All room dimensions are measured to structural elements and exclude wall finishes and construction tolerances. 3. All dimensions have been provided by our consultant architects. 4. All materials, dimensions and drawings are approximate. Information is subject to change without notice. 5. Actual suite area may vary from the stated area. Drawings are not to scale. The Developer reserves the right to make any revisions whatsoever including for aesthetic purposes.

6. Calculation of suite area is measured as the area bounded by the centre line of demising or partition walls separating one unit from another unit, the exterior face of all exterior walls, and the exterior face of the corridor wall enclosing the adjoining unit. 7. Calculation of balcony area is measured as the area bounded by the centre line of demising or partition walls separating one unit from another unit, the outmost face of the enclosing guard and the external face of the adjoining balcony. 8. The units are measured at typical floor in the building. Columns may vary in size depending on the floor level. 9. For each unit type, unit sizes and details might be different and your sales and purchase agreement will contain the actual size of each specific unit.



FINISHES

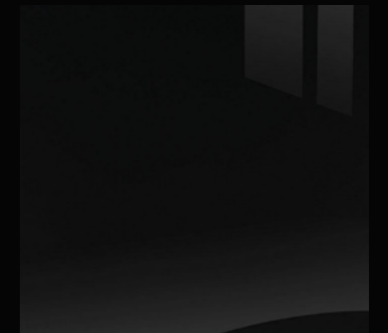
# Billionaire Penthouse



CROCODILE LEATHER +  
BRUSHED BRASS + COLORED  
HI - GLOSS MDF PANEL



STONE CALACATTA  
MARBLE



HI - GLOSS  
MDF



BLACK EUCALYPTUS  
PARQUET



BRUSHED  
BRASS



SPECIALIZED TINTED  
MIRROR











DESIGN DETAILS

# Stratospheric Infinity Pool

ravish in boundless sybaritic spree





DESIGN DETAILS

# Bask in Uttermost Grandeur





The Zenith of  
Artistry and Opulence





Inspired by  
the Impossible

